

ISO 15552 SERIES PNEUMATIC CYLINDERS



➤ PREMIUM LINE

BMA TYPE, Ø 32 ÷ 125

FLAT HEADS, PROFILE BARRELL

DOUBLE ACTING, MAGNETIC, ADJUSTABLE CUSHIONING

«T» & «C» GROOVES FOR DIRECTLY MOUNTING OF MAGNETIC REED SWITCHES



➤ PREMIUM LINE

BMT TYPE, Ø 32 ÷ 125

FLAT HEADS, ROUND TUBE & TIE RODS

DOUBLE ACTING, MAGNETIC, ADJUSTABLE CUSHIONING



➤ STANDARD LINE

AMA TYPE, Ø 32 ÷ 125

LIGHT HEADS, PROFILE BARRELL

DOUBLE ACTING, MAGNETIC, ADJUSTABLE CUSHIONING

«T» & «C» GROOVES FOR DIRECTLY MOUNTING OF MAGNETIC REED SWITCHES



➤ STANDARD LINE

AMT TYPE, Ø 32 ÷ 125

LIGHT HEADS, ROUND TUBE & TIE RODS

DOUBLE ACTING, MAGNETIC, ADJUSTABLE CUSHIONING



➤ STANDARD LINE

AMT TYPE, Ø 160 ÷ 320

LIGHT HEADS, ROUND TUBE & TIE RODS

DOUBLE ACTING, MAGNETIC, ADJUSTABLE CUSHIONING





STANDARD

FULL SEALS KIT, PU/NBR, -20°C ÷ +80°C
LONG LIFE, GENERAL APPLICATIONS



OPTION H

FULL SEALS KIT, NBR, -20°C ÷ +80°C
HUMID ENVIRONMENTS, GENERAL APPLICATIONS



OPTION V

FULL SEALS KIT, FKM, -20°C ÷ +150°C
HIGH TEMPERATURES AND CHEMICALS



OPTION H1

ROD SEAL, NBR, -20°C ÷ +80°C
HUMID ENVIRONMENTS, GENERAL APPLICATIONS



OPTION V1

ROD SEAL, FKM, -20°C ÷ +80°C
CHEMICAL ENVIRONMENTS



OPTION E8

ROD SEAL, NBR/TPE, -20°C ÷ +80°C
DIRTY & DUSTY ENVIRONMENTS



OPTION BT

FULL SEALS KIT, SPECIAL PU, -40°C ÷ +80°C
LOW TEMPERATURE ENVIRONMENTS



OPTION EC

ROD SEAL, P5600/PU/NBR, -20°C ÷ +80°C
FOOD & BEVERAGE, GENERAL APPLICATIONS



OPTION Y

METALLIC ROD SCRAPER*
HARSH ENVIRONMENTS

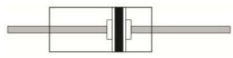
*COMBINABLE WITH V, V1, H, H1 & BT OPTIONS



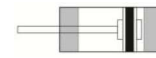
OPTION Z

BELLOW ROD PROTECTION**
HARSH ENVIRONMENTS

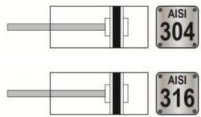
**WH OPTION COULD BE REQUIRED



OPTION P
THROUGH ROD



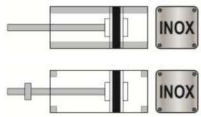
OPTION D, D1 & D2
ADJUSTABLE CUSHIONING OPTIONS



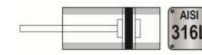
OPTION K & K316
STAINLESS STEEL ROD



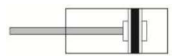
OPTION F
FEMALE THREAD



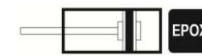
OPTION K1 & K2
STAINLESS STEEL TIE-ROD / NUTS
FOR AMT & BMT TYPES ONLY



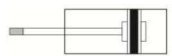
OPTION TX
STAINLESS STEEL TUBE
FOR AMT & BMT TYPES ONLY



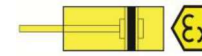
OPTION B & B1
EXTENDED ROD FOR ROD BRAKE



OPTION EPX
EPOXY COATING



OPTION WH
EXTENDED ROD



OPTION /ATEX
ATEX VERSION



OPTION RM
SPECIAL MALE THREAD



OPTION TA1 ÷ TA4
TANDEM VERSIONS
TA1 = PISTON RODS COUPLED
TA2 = PISTON RODS INDEPENDENT
TA3 = BACKTOBACK
TA4 = FRONTTOFRONT



CLEVIS
WITH CLIP
ISO 8140 OR DIN 71752



CLEVIS
WITH PIN & SEEGER
ISO 8140 OR DIN 71752
AVAILABLE ALSO BODY ONLY



BEARING HEADS
ISO 8139 (DIN 648K)
MALE OR FEMALE THREAD



BEARINGS
SELF-ALIGNING
ARTICULATED COUPLING



BEARINGS
AXIAL ARTICULATED
COUPLING



BEARINGS
ANGLE ARTICULATED
COUPLING



COUPLINGS
SELF-ALIGNING
COUPLING



ROD NUTS
UNI 5589 (DIN 936)



CLEVIS
ISO MP2
IN ALUMINIUM OR STEEL



NARROW CLEVIS
ISO AB6
IN ALUMINIUM OR STEEL



REAR EYE
ISO MP4
IN ALUMINIUM OR STEEL



NARROW REAR EYE
ISO MP6
IN ALUMINIUM OR STEEL



FLANGE
ISO VDMA MF1/MF2
IN ALUMINIUM OR STEEL



REAR 90° HINGE
ISO AB7 – CETOP RP 107P
IN ALUMINIUM OR STEEL



FOOT
ISO MS3
IN ALUMINIUM



LOW FOOT
ISO MS1
IN STEEL



FRONT CLEVIS
ISO MP7
IN ALUMINIUM



REAR 90° HINGE
ISO CS7 (DIN 648K)
IN STEEL



TRUNNION
ISO MT4
IN STEEL



HEAD TRUNNION
ISO MT5/MT6
IN STEEL



ADVANCED
PNEUMATIC
INDUSTRIES

// ISO 15552 CYLINDERS OTHER ACCESSORIES

AIR
POWER
CONTROL



SLIDE UNITS

Ø 32 ÷ 100

«H» OR «U» SHAPED



PISTON ROD BRAKE

Ø 32 ÷ 125

STATIC OR DYNAMIC



REED SWITCHES

MAGNETIC

FOR «C» OR «T» GROOVES

ATEX & HIGH TEMPERATURE AVAILABLE

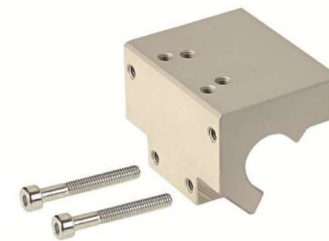


PLATE FOR VALVES

1/8" ÷ 1/2"

FOR VALVES A1 SERIES