

Fluid control valve(2/2way)

2SA Series (Direct-acting and normally closed)



Symbol



Product feature

1. Direct acting and normally closed type 2/2 way fluid valve. Its high sensibility allows it to change direction quickly;
2. It has wide pressure range, including extra high pressure (X), high pressure (H), standard, large volume(L) and extra large volume (T);
3. It is compact, small size and light weight. Easy to install and dismantle.
4. The valve body is made of SUS304. Its coil has a Heat resistance classification of Class F. The standard seal material is FPM-F. Please contact us if other seal material are required.
5. The protection class of the coil is IP65 and there is a choice for grommet or terminal electrical entry.

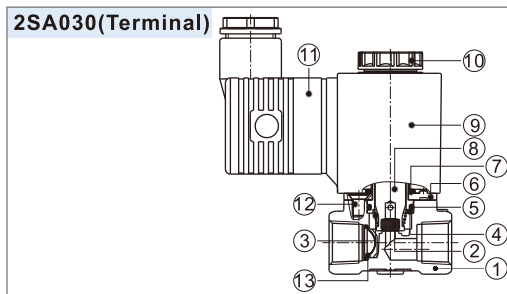
Specification

Model\Item	Port size [Note1]	Orifice size (Φmm)	Cv	Valid area or section (mm ²)	Weight [Note2](g)	Max.operating pressure differentia		Proof pressure	
						MPa	psi	MPa	psi
2SAX030	-06	1/8"	1.5	1.8	245	3.0	450	5.0	750
	-08	1/4"			235				
2SAH030	-06	1/8"	2.0	3.0	245	2.0	300		
	-08	1/4"			235				
2SA030	-06	1/8"	3.0	6.0	245	1.0	150		
	-08	1/4"			235				
2SAL030	-06	1/8"	4.0	10.0	245	0.5	75		
	-08	1/4"			235				
2SAT030	-06	1/8"	6.0	12.0	245	0.1	15		
	-08	1/4"			235				
2SAX050	-10	3/8"	3.0	6.1	530	3.0	450		
	-15	1/2"			510				
2SAH050	-10	3/8"	4.0	10.0	530	2.0	300		
	-15	1/2"			510				
2SA050	-10	3/8"	5.0	15.0	530	1.0	150		
	-15	1/2"			510				
2SAL050	-10	3/8"	7.0	25.0	530	0.5	75		
	-15	1/2"			510				
2SAT050	-10	3/8"	10.0	40.0	530	0.1	15		
	-15	1/2"			510				

[Note1] PT thread, G thread and NPT thread are available.

[Note2] The weight in the table is the terminal valve's weight, 2SA030 series grommet valve's weight is 10g less than terminal's. 2SA050series grommet valve's weight is 20g less than terminal's.

Inner structure



No.	Item	No.	Item	No.	Item
1	Body	6	Fixed plate	11	Connector
2	Airtight ring	7	O-ring	12	Screw
3	Spring	8	Movable core	13	Filter [Note]
4	Steel bushing	9	Coil assembly		
5	O-ring	10	Coil nut		

[Note] Extra large volume type has no filter element.

Specification of coil

Valve type	Coil type	Power type	Frequency (Hz)	Voltage range	Electrical entry	Power Consumption (VA/W)	Insulation	Temp. rise(°C)
2SA□030	CDA110 CLA110	AC	50	±15%	Terminal (CDA)	10.0VA	Class F	35
			60			8.0VA		30
		DC	-	±10%		6.5W		30
			2SA□050	CDA160 CLA160		AC		50
60	22.0VA	55						
DC	-	±10%			12.0W	40		

Valve's specification

Acting		Direct acting				
Initial state		Normally closed				
Adaptable fluid		Air, Water, Oil				
Viscosity limit		Under 20CST				
Ambient and fluid temperature (°C)			Water	Air	Oil	Ambient
		Max.	80	90	80	70
		Min.	1	-20 [Note1]	-10 [Note2]	-20

[Note1] Dew point: -20(°C) or less ; [Note2] 50CST or less.

Ordering code

Ordering code of valves

2SA L 030 08 A □ □



① Model	② Pressure condition	③ Size series	④ Port size	⑤ Voltage	⑥ Electrical entry	⑦ Thread type
2SA: 2/2 way direct-acting and normally closed	X: Extra high pressure H: High pressure Blank: Standard L: Large volume T: Extra large volume	030: 030 Series 050: 050 Series	06: 1/8" 08: 1/4" 10: 3/8" 15: 1/2"	A: AC220V B: DC24V C: AC110V E: AC24V F: DC12V	Blank: Terminal I: Grommet[Note]	Blank: PT G: G T: NPT

[Note] The wire length is 0.5m.

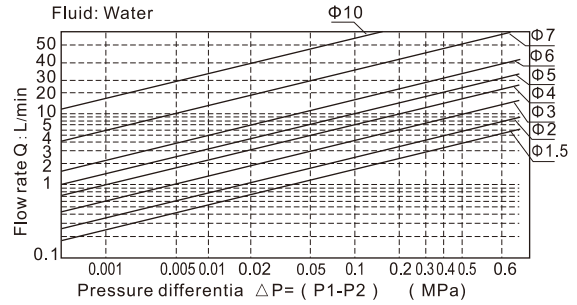
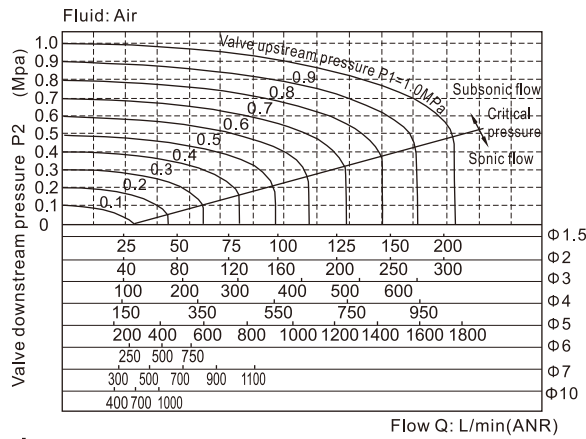
Ordering code of accessories

Ordering code of accessories is the same as 2WA series valve's, Please refer to P9 for details of ordering code.

Fluid control valve(2/2way)

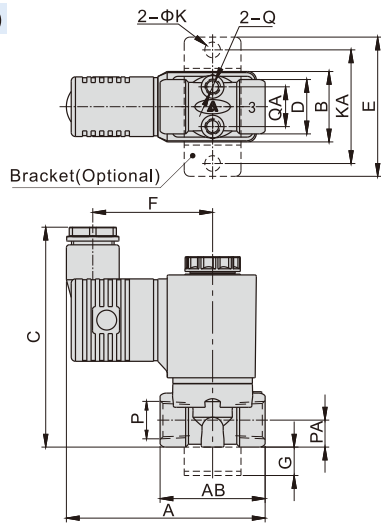
2SA Series (Direct-acting and normally closed)

Flow chart

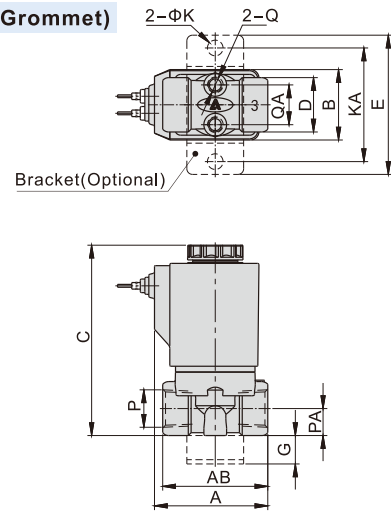


Dimensions

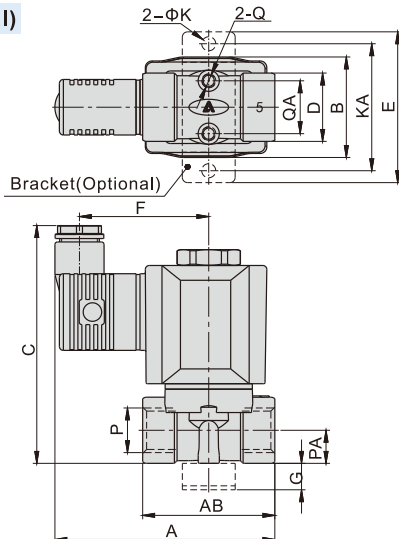
2SA□030 (Terminal)



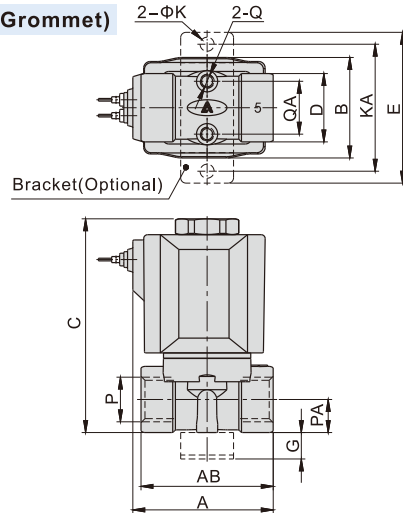
2SA□030(Grommet)



2SA□050 (Terminal)



2SA□050(Grommet)



Model/Item	A	AB	B	C	D	E	F	G	K	KA	P	PA	Q	QA
2SA□030-06	70	37	25	77.5	19	49	42	10	5.3	40	1/8"	9.5	M5	13.5
2SAT□030-06	71.5	39.5	25	77.5	19	49	42	10	5.3	40	1/8"	9.5	M5	13.5
2SA□030-08	70	37	25	77.5	19	49	42	10	5.3	40	1/4"	9.5	M5	13.5
2SAT□030-08	71.5	39.5	25	77.5	19	49	42	10	5.3	40	1/4"	9.5	M5	13.5
2SA□050-10	83	50	38	90	26	57	49	10	5.3	48	3/8"	12.5	M5	19.5
2SAT□050-10	84	51	38	90	26	57	49	10	5.3	48	3/8"	12.5	M5	19.5
2SA□050-15	83	50	38	90	26	57	49	10	5.3	48	1/2"	12.5	M5	19.5
2SAT□050-15	84	51	38	90	26	57	49	10	5.3	48	1/2"	12.5	M5	19.5

Model/Item	A	AB	B	C	D	E	G	K	KA	P	PA	Q	QA
2SA□030-06	40	37	25	67	19	49	10	5.5	40	1/8"	9.5	M5	13.5
2SAT□030-06	41.5	39.5	25	67	19	49	10	5.5	40	1/8"	9.5	M5	13.5
2SA□030-08	40	37	25	67	19	49	10	5.5	40	1/4"	9.5	M5	13.5
2SAT□030-08	41.5	39.5	25	67	19	49	10	5.5	40	1/4"	9.5	M5	13.5
2SA□050-10	53	50	38	81	26	57	10	5.5	48	3/8"	12.5	M5	19.5
2SAT□050-10	54	51	38	81	26	57	10	5.5	48	3/8"	12.5	M5	19.5
2SA□050-15	53	50	38	81	26	57	10	5.5	48	1/2"	12.5	M5	19.5
2SAT□050-15	54	51	38	81	26	57	10	5.5	48	1/2"	12.5	M5	19.5