

CLIMAX

METAL PRODUCTS COMPANY



CLESCO



Abrasives & Abrasive Hardware

ISO 9001:2008

QUALITY MANAGEMENT SYSTEM

Clesco the Abrasive Hardware Specialist

This catalog reflects the major product categories & is not comprehensive in including all the product types or custom items we produce.

Established in 1930, Clesco is located in Mentor Ohio and is a wholly owned subsidiary of Climax Metal Products Company. As an industry leader in supplying abrasives & abrasive hardware, we serve a wide spectrum of industries including:

- Woodworking
- Metal Finishing
- Automotive
- Jewelry
- Glass
- Stone
- Leather
- Tool & Die

Clesco offers a tremendous breadth of products in the abrasive hardware area & strives to exceed your customer service requirements.

Table of Contents

Mandrels

Mandrels for Cartridge Rolls - Standard Tapered Type... CR-Series	3
Mandrels for Cartridge Rolls - Deluxe Tapered Type... CR-Series	4
Screw Lock Type Wheel Adapters with Shank... M-Series	4
Chuck Type Wheel Mandrels... WS-Series	5
Mandrels for Non-Woven Abrasives... H-Series	5
Cone Point Mandrels... CPM-Series	6
Buffing Spindles... BT-Series	6
Quick Change Mandrels... CPM-Series	6
Slotted Head, Quick Change Mandrels... SM-Series	7
Spin-on Mandrels... QC-Series & PM-Series	7

Arbors

Flat Head Arbors... FHL-Series	5
Nut Lock Wheel Adapters... W-Series	5
Winding Arbors... WA-Series	7
Motor & Grinder Shaft Arbors... A-Series, AL-Series, AS-Series & GA-Series	8-9

Drill Centers & Kit for Dowel & Tenon ... TC-Series	7
---	---

Drill Stop Collar Kit & Refill ... DK-Series	4
--	---

Sanding Drums

Sanding Drums... SD-Series	10-11
Sanding Drum Kits... SDK-Series & QLK-Series	12-13

Sanding Sleeves

Sanding Sleeves... SS-Series	14-17
Sanding Sleeve Assortment Packs... SS-Series	18

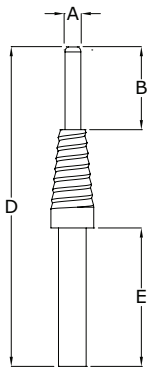
Specials	19
-----------------------	----

Standard Tapered Type Mandrels for Cartridge Rolls



CLESCO

"The Abrasive Hardware Specialist"



- Quick change mandrels for coated abrasive cartridge rolls
- Feature sharp, coarse threads which hold cartridge rolls securely in place in operation
- Rust proof black oxide finish



HOW TO ORDER:

- Shank Dia. – order the size that fits your collet or chuck.
- Pilot Dia. – to be the same size as hole in cartridge roll.
- Pilot Length – for rolls:
 - 3/4" long – use 1/2" pilot length
 - 1" long – use 3/4" pilot length
 - 1 1/2" long – use 1" pilot length
 - 2" long – use 1 1/2" pilot length

Catalog #	(A) Pilot Dia.	(B) Pilot Length	(C) Shank Dia.	(D) O.A.L.	(E) Shank Length
CR-1	5/64	1	1/8	3	1
CR-2A	3/32	1/2	1/8	2 1/2	1
CR-2B	3/32	3/4	1/8	2 3/4	1
CR-2	3/32	1	1/8	3	1
CR-2D	3/32	1/2	1/4	2 1/2	1 1/4
CR-2E	3/32	3/4	1/4	2 3/4	1 1/4
CR-2E-4	3/32	3/4	1/4	4	2 1/2
CR-2F	3/32	1	1/4	3	1 1/4
CR-2F-4	3/32	1	1/4	4	2 1/4
CR-2F-6	3/32	1	1/4	6	4 1/4
CR-3	1/8	1/2	1/8	2 1/2	1
CR-4	1/8	3/4	1/8	2 3/4	1
CR-4A	1/8	3/4	3/32	2 3/4	1
CR-5	1/8	1	1/8	3	1
CR-5A	1/8	1	3/32	3	1
CR-6	1/8	1 1/2	1/8	3 1/2	1
CR-7	1/8	1/2	1/4	2 1/4	1
CR-7-4	1/8	1/2	1/4	4	2 3/4
CR-7-6	1/8	1/2	1/4	6	4 3/4
CR-7-8	1/8	1/2	1/4	8	6 3/4
CR-7-10	1/8	1/2	1/4	10	8 3/4
CR-7-12	1/8	1/2	1/4	12	10 3/4
CR-8	1/8	3/4	1/4	2 1/2	1
CR-8-6MM	1/8	3/4	6mm	2 1/2	7/8
CR-8-4	1/8	3/4	1/4	4	2 1/2
CR-8-6	1/8	3/4	1/4	6	4 1/2
CR-8-8	1/8	3/4	1/4	8	6 1/2
CR-8-10	1/8	3/4	1/4	10	8 1/2
CR-8-12	1/8	3/4	1/4	12	10 1/2
CR-9	1/8	1	1/4	2 3/4	1
CR-9-6MM	1/8	1	6mm	3	1
CR-9-2SH	1/8	1	1/4	3 3/4	2
CR-9-4	1/8	1	1/4	4	2 1/4
CR-9-6	1/8	1	1/4	6	4 1/4
CR-9-6SH	1/8	1	1/4	7 3/4	6
CR-9-8	1/8	1	1/4	8	6 1/4
CR-9-10	1/8	1	1/4	10	8 1/4
CR-9-12	1/8	1	1/4	12	10 1/4
CR-10	1/8	1 1/2	1/4	3 1/4	1
CR-10-4	1/8	1 1/2	1/4	4	1 3/4

Catalog #	(A) Pilot Dia.	(B) Pilot Length	(C) Shank Dia.	(D) O.A.L.	(E) Shank Length
CR-10-5	1/8	1 1/2	1/4	5	2 3/4
CR-10-6	1/8	1 1/2	1/4	6	3 3/4
CR-10-8	1/8	1 1/2	1/4	8	5 3/4
CR-10-10	1/8	1 1/2	1/4	10	7 3/4
CR-10-12	1/8	1 1/2	1/4	12	9 3/4
CR-11	1/8	2	1/4	4	1 1/4
CR-11-6	1/8	2	1/4	6	3 1/4
CR-12	3/16	1/2	1/8	2 1/2	1
CR-13	3/16	3/4	1/8	2 3/4	1
CR-14	3/16	1/2	1/4	2 1/2	1 1/4
CR-14-4	3/16	1/2	1/4	4	1 1/4
CR-15	3/16	3/4	1/4	2 3/4	1 1/4
CR-15-6MM	3/16	3/4	6mm	2 3/4	1 1/4
CR-15-6	3/16	3/4	1/4	6	1 1/4
CR-15-8	3/16	3/4	1/4	8	1 1/4
CR-16	3/16	1	1/4	3	1 1/4
CR-16-6MM	3/16	1	6mm	3	1 1/4
CR-16-4	3/16	1	1/4	4	1 1/4
CR-16-6	3/16	1	1/4	6	1 1/4
CR-16-8	3/16	1	1/4	8	1 1/4
CR-17	3/16	1 1/2	1/4	3 1/2	1 1/4
CR-17-6	3/16	1 1/2	1/4	6	1 1/4
CR-17-8	3/16	1 1/2	1/4	8	1 1/4
CR-18	3/16	2	1/4	4	1 1/4
CR-18-6	3/16	2	1/4	6	1 1/4
CR-18-8	3/16	2	1/4	8	1 1/4
CR-19	1/4	1/2	1/4	2 1/2	1 1/4
CR-20	1/4	3/4	1/4	2 3/4	1 1/4
CR-20-4	1/4	3/4	1/4	4	1 1/4
CR-20-6	1/4	3/4	1/4	6	1 1/4
CR-21	1/4	1	1/4	3	1 1/4
CR-21-4	1/4	1	1/4	4	1 1/4
CR-21-6	1/4	1	1/4	6	1 1/4
CR-21-12	1/4	1	1/4	12	1 1/4
CR-22	1/4	1 1/2	1/4	3 1/2	1 1/4
CR-22-6	1/4	1 1/2	1/4	6	1 1/4
CR-23	1/4	2	1/4	4	1 1/4
CR-25	5/16	3/4	1/4	2 3/4	1 1/4
CR-27	5/16	1 1/2	1/4	3 1/2	1 1/4
CR-28	5/16	2	1/4	4	1 1/4



CLESCO

"The Abrasive Hardware Specialist"

Deluxe Tapered Type Mandrels for Cartridge Rolls

- Quick change mandrels for coated abrasive cartridge rolls
- Deluxe mandrels have an extra coarse "Acme" thread
- Rust proof black oxide finish



Catalog #	(A) Pilot Dia.	(B) Pilot Length	(C) Shank Dia.	(D) O.A.L.	(E) Shank Length
CR-7-ACME	1/8	1/2	1/4	3	1 3/4
CR-8-ACME	1/8	3/4	1/4	3 1/4	1 3/4
CR-9-ACME	1/8	1	1/4	3 1/2	1 3/4
CR-9-4-ACME	1/8	1	1/4	4	2 1/4
CR-9-6-ACME	1/8	1	1/4	6	4 1/4
CR-9-8-ACME	1/8	1	1/4	8	6 1/4
CR-9-10-ACME	1/8	1	1/4	10	8 1/4
CR-9-12-ACME	1/8	1	1/4	12	10 1/4
CR-16-ACME	3/16	1	1/4	3 1/2	1 1/4
CR-21-ACME	1/4	1	1/4	3 1/2	1 1/4

Drill Stop Kit

- Drill stop collars make it easy to drill holes to a uniform depth.
- Kits consist of 7 set screw collars that firmly grip the outer diameter of the drill.
 - Bit sizes include: 1/8", 3/16", 1/4", 5/16", 3/8", 7/16", and 1/2"
 - Hex keys enclosed for easy installation



Drill Kit #100
DK-Refill #101
(collars only)



Screw Lock Type Wheel Adapters with Shank

- For mounting various types of abrasive & finishing wheels such as: cut-off, wire brushes, buffs, non-woven, etc.
- Wheel is secured in place with a slotted screw
 - Quick & easy change of wheels
- Design permits better access to work areas which may be difficult to reach
 - Rust proof black oxide finish



Catalog #	Fits Hole	Wheel		Shank Dia.	Head Style	Head Dia.	O.A.L.
		Widths up to (in):					
M-080	1/16	1/4	1/8	Straight	3/16	1 3/4	
M-11X	1/8	1/4	1/8	Straight	1/4	1 1/2	
M-11*	1/8	3/16	1/8	Straight	1/4	1 1/2	
M-21	1/8	1/4	1/4	Straight	3/8	2	
M-21-3	1/8	1/4	1/4	Straight	3/8	3	
M-21-4	1/8	1/4	1/4	Straight	3/8	4	
M-21-6	1/8	1/4	1/4	Straight	3/8	6	
M-14-2	1/4	1/4	1/4	Straight	7/16	2	
M-14-25	1/4	1/4	1/4	Straight	7/16	2 1/2	
M-14-3	1/4	1/4	1/4	Straight	7/16	3	
M-14-35	1/4	1/4	1/4	Straight	7/16	3 1/2	
M-14-4	1/4	1/4	1/4	Straight	7/16	4	
M-14-6	1/4	1/4	1/4	Straight	7/16	6	
M-22	1/4	1/4	1/4	Bell	3/4	2	
M-32	1/4	1/4	3/8	Bell	3/4	2	
M-22-L	1/4	3/8 - 1/2	1/4	Bell	3/4	2	
M-32-L	1/4	3/8 - 1/2	3/8	Bell	3/4	2	
M-23	3/8	1/4	1/4	Bell	3/4	2	
M-23-6MM	3/8	3/16	6mm	Bell	3/4	2	
M-33	3/8	1/4	3/8	Bell	3/4	2	
M-23-L	3/8	3/8 - 1/2	1/4	Bell	3/4	2	
M-33-L	3/8	3/8 - 1/2	3/8	Bell	3/4	2	
M-3*	1/4 or 3/8	1/4	1/4	Bell	3/4	2	

*M-11 comes with two 5/8" diameter washers.

*M-3 is bagged and contains 1/4" screw and 3/8" screw with one mandrel body.



CLESCO

"The Abrasive Hardware Specialist"

Flat Head Arbors

- Left hand threaded arbor
- "Flat Head" style which allows the wheel to be mounted between a single washer and the flat-head
- Designed primarily for mounting wire wheel brushes & other abrasive finishing products
 - Rust proof finish



Catalog #	Fits Hole	Wheel Widths up to (in):	Shank Dia.	Washer Dia.	O.A.L.
FHL-8x	1/4	3/4	3/16	5/8	1 3/4
FHL-10x	3/8	3/8	1/4	3/4	1 5/8
FHL-25x	1/2	3/8	1/4	7/8	1 7/8
FHL-30x	1/2	7/8	1/4	7/8	2 5/16
FHL-50x	5/8	3/8	1/4	7/8	1 7/8
FHL-30*	1/2	1/2	1/4	1 5/8	2 5/16

* Comes with two flanged washers

Chuck Type Wheel Mandrels

- These adapters fit wheels 1/4" to 3/8" wide
- Use with wire wheel brushes, small grinding wheels, buffs, etc.
 - Rust proof finish



Catalog #	Fits Hole	Wheel Widths	Shank Dia.	Flange Dia.	O.A.L.
WS-22	1/4	1/4 to 3/8	1/4	9/16	2 1/8
WS-23	3/8	1/4 to 3/8	1/4	11/16	2 1/8
WS-24	1/2	1/4 to 3/8	1/4	3/4	2 1/8

Nut Lock Wheel Adapters

- Right hand threaded arbor
- For mounting various types of abrasive & finishing wheels
- Features an open end threaded mounting shaft with two washers and a locking hex nut
 - Wheel can be changed without any disassembly
 - Rust proof finish



Catalog #	Fits Hole	Wheel Widths Up To:	Shank Dia.	Washer Dia.	Washer Type	O.A.L.
W-22T	1/4	5/8	1/4	1	Machine Flanged	2 1/2
W-22SP	1/4	3/4	1/4	1/2	Stamped Flat	2 1/2
W-23M	3/8	3/8	1/4	1 1/4	Stamped Flanged	2 1/2
W-23MSP	3/8	3/4	1/4	3/4	Stamped Flat	2 1/2
W-23MT	3/8	5/8	1/4	1	Machine Flanged	2 1/2
W-23SP	3/8	1	1/4	3/4	Stamped Flat	2 1/2
W-24	1/2	3/8	1/4	1 5/8	Stamped Flanged	2 1/2
W-24SP	1/2	5/8	1/4	7/8	Stamped Flat	2 1/2
W-24T	1/2	5/8	1/4	1 1/2	Machine Flanged	2 1/2
W-24M	1/2	1/4	1/4	5/8	Stamped Flat	1 5/8
W-34	1/2	1	3/8	1 5/8	Stamped Flanged	3
W-24EXL	1/2	1	1/4	1 5/8	Stamped Flanged	3 1/8
W-34EXL	1/2	2 3/8	3/8	1 5/8	Stamped Flanged	4 1/2

Quick Change Mandrel with Shank

For Bonded Abrasive Cones & Plugs



Catalog #	Fits Hole	Shank Dia.	O.A.L.
W-25X	5/8-11	1/4	1 5/8

Mandrels for Non-Woven Abrasives



Catalog #	Fits Hole	Wheel Widths up to (in):	Wheel Dia. up to (in):	Shank Dia.	Washer Dia.	O.A.L.
H-808-1	1/8 - 3/16	3/4	2	1/8	7/16	1 3/4
H-808-2	1/4 - 5/16	1	2	1/4	5/8	2 1/4
H-938-2*	1/4 - 5/16	1	3	1/4	2	2 1/4
H-1608-2	1/4 - 5/16	1	3	1/4	1	2 1/4

*H-938-2 comes with one flat two inch diameter washer and one dishd-tooth washer.

www.climaxmetal.com

Phone: 1-800-542-6552 Fax: 1-800-860-5553

Buffing Spindles

- Unique attachment designed to mount soft-centered wheels on motors
 - Quick change design does not need washers or nuts
- Spindle is held securely to motor shaft with 2 set screws
 - Rust proof plated finish



Catalog #	Fits Shaft	Taper Length	O.A.L.	Thread Type
BTR-2	1/4	2 1/2	3 5/8	Right-Hand
BTR-3	3/8	2 5/8	4 5/16	Right-Hand
BTR-4	1/2	2 5/8	4 5/16	Right-Hand
BTR-5	5/8	2 5/8	4 5/16	Right-Hand
BTL-2	1/4	2 1/2	3 5/8	Left Hand
BTL-3	3/8	2 5/8	4 5/16	Left Hand
BTL-4	1/2	2 5/8	4 5/16	Left Hand
BTL-5	5/8	2 5/8	4 5/16	Left Hand

Cone Point Mandrels

- Tapered threaded mandrels for use with abrasive cone points
- Sharp spiral threads are formed to provide a "self-locking" feature for the cones



Catalog #	Shank Dia.	Taper Degree	Taper Length	Major Dia.	O.A.L.
CPM-1	1/4	12	1 3/8	3/8	2 3/4
CPM-2	1/4	6	1 1/2	1/4	3 1/16
CPM-3	1/4	6	2 1/2	3/8	3 15/16
CPM-4	1/4	5	3	3/8	4 7/16
CPM-5	1/4	15	1 7/8	9/16	3 1/8
CPM-6	1/4	18	1 7/8	11/16	3 5/16
CPM-7	1/4	22	1 9/16	3/4	3 5/16
CPM-8	1/4	30	1 7/8	1	3 3/8
CPM-9	1/4	12	2 9/16	5/8	4 1/4
CPM-11	1/8	6	1	3/16	2 3/4

Quick Change Mandrels

For Unitized Abrasive Plug Wheel

- Quick & easy replacement
- Rust proof black oxide finish



Catalog #	Male Thread Dia.	Thread Length	Shank Dia.	Shoulder Dia.	O.A.L.
CPM-12	5/16	3/4	1/4	1/2	1 3/4

For Buffing Wheels & Bobs

- This tapered threaded mandrel is especially designed to hold cloth polishing wheels, felt bobs & other soft center wheels
 - No washers or nuts needed



Catalog #	Thread Length	Shank Dia.	Major Dia.	O.A.L.
CPM-14	1 1/2	1/4	7/16	2 1/2
CPM-14-4	1 1/2	1/4	7/16	4
CPM-14-6	1 1/2	1/4	7/16	6

For Rubberized Abrasive Cones & Points - with Hex Nut



Catalog #	Male Thread Dia.	Thread Length	Shank Dia.	Shoulder Dia.	O.A.L.
CPM-18	3/32	1/2	3/32	3/32	1 3/4
CPM-17	3/32	1/2	1/8	1/8	1 3/4
CPM-15	1/8	1/2	1/8	1/8	1 3/4

For Rubberized Abrasive Cones & Points - with Tapered Point



Catalog #	Thread Length	Shank Dia.	Shoulder Dia.	O.A.L.
CPM-16	1/2	1/8	1/4	1 3/4
CPM-19	1/2	1/4	1/4	1 3/4

Hex Head Spin-On Mandrels For Threaded Eyelet

- For use with coated abrasive flap wheels, non-woven wheels and other finishing wheels which have an external righthand threaded shank



Catalog #	Fits Thread	Shank Dia.	Head Dia.	O.A.L.
QC-1420	1/4"-20	1/4	3/8	1 3/4
QC-1420-4	1/4"-20	1/4	3/8	4
QC-1420-6	1/4"-20	1/4	3/8	6
QC-1420-8	1/4"-20	1/4	3/8	8

Slotted Head Quick Change Mandrels

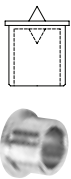
- Holds abrasive sheets which are secured in slot and rolled around the head
- Excellent for sanding or finishing internal holes
- Rust proof finish



Catalog #	Slot Dia.	Slot Width	Depth	O.A.L.
SM-3-250	1/4	1/16	3/4	3
SM-4-250	1/4	1/16	3/4	4
SM-6-250	1/4	1/16	3/4	6
SM-8-250	1/4	1/16	3/4	8
SM-10-250	1/4	1/16	3/4	10
SM-12-250	1/4	1/16	3/4	12

Drill Centers & Kit for Dowel & Tenon

- Centers have both external & internal points for marking exact drilling location
 - Provides for precise alignment of dowels & tenon joints
- Steel construction with zinc-plated finish
 - Sold in packs of 10



Catalog #	O.D.	I.D.
TC-014-10	1/4	3/16
TC-516-10	5/16	1/4
TC-038-10	3/8	5/16
TC-012-10	1/2	3/8

Straight Head Spin-On Mandrels For Threaded Eyelet

- These mandrels hold various abrasives and do not require washers or nuts
 - Quick & easy replacement
 - Rust proof black oxide finish



Catalog #	Fits Thread	Shank Dia.	O.A.L.
PM-348-1	#3-48	1/8	2 1/2
PM-348-2	#3-48	1/4	2 1/2
PM-348-2-4	#3-48	1/4	4
PM-348-2-6	#3-48	1/4	6
PM-348-2-8	#3-48	1/4	8
PM-832	#8-32	1/4	2.92
PM-832-4	#8-32	1/4	4
PM-832-6	#8-32	1/4	6
PM-832-8	#8-32	1/4	8
PM-1420	1/4"-20	1/4	2.95
PM-1420-QC	1/4"-20	1/4	2
PM-1420-4	1/4"-20	1/4	4
PM-1420-6	1/4"-20	1/4	6
PM-1420-8	1/4"-20	1/4	8

Winding Arbors

- For use in the manufacturing of cartridge rolls



Catalog #	O.D.	Slot Width	Slot Length	O.A.L.
WA-564-1	3/32	0.025	3	4 1/2
WA-564-2	3/32	0.032	3	4 1/2
WA-332-1	7/64	0.025	3	4 1/2
WA-332-2	7/64	0.032	3	4 1/2
WA-332-3	1/8	0.045	3	4 1/2
WA-18-2	9/64	0.032	3	4 1/2
WA-18-3	5/32	0.045	3	4 1/2
WA-18-4	5/32	0.057	3	4 1/2
WA-316-2	13/64	0.032	3	4 1/2
WA-316-3	7/32	0.045	3	4 1/2
WA-316-4	15/64	0.057	3	4 1/2
WA-14-2	17/64	0.032	3	4 1/2
WA-14-3	9/32	0.045	3	4 1/2
WA-14-4	19/64	0.057	3	4 1/2
WA-516-3	11/32	0.045	3	4 1/2
WA-516-4	23/64	0.057	3	4 1/2

Catalog #	Packaging	Description
TC-8	POLY-BAG 8 PC, SET WITH TWO EACH 1/4", 5/16", 3/8", & 1/2"	



CLESCO

"The Abrasive Hardware Specialist"

Motor & Grinder Shaft Arbors

- Nut Lock Type – for smooth shafts
- For mounting various wheels (buffs, wire brush, non-woven, etc.)
- Arbor is secured to smooth motor shafts with socket set screws
- RH (right-hand) units with 1/2"-20 threaded arbors can also be used to mount Climax keyless chucks to drive various shank-mounted accessories
- Use RH (right-hand) type for counter-clockwise shaft rotation (facing shaft)
- Use LH (left-hand) type for clockwise shaft rotation (facing shaft)

Type A "Small"

This type is ideal for use on smaller fractional horse-power motors.



Type	Deluxe		Economy		Fits Shaft Dia.	Fits Wheel Hole	Thread	Max Wheel Width	Thread Length	O.A.L.
	Machined	Washer Dia.	Stamped	Washer Dia.						
A	A-320-D	1	A-320	1 1/4	1/4	3/8	R.H.	1/2	1 1/8	2
A	A-325-D	1	A-325	1 1/4	5/16	3/8	R.H.	1/2	1 1/8	2
A	A-330-D	1	A-330	1 1/4	3/8	3/8	R.H.	1/2	1 1/8	2
A			AL-320	1 1/4	1/4	3/8	L.H.	1/2	1 1/8	2
A			AL-325	1 1/4	5/16	3/8	L.H.	1/2	1 1/8	2
A			AL-330	1 1/4	3/8	3/8	L.H.	1/2	1 1/8	2

Type B "Standard"

These Arbors have a 1/2" diameter threaded portion that is 1-13/16" long which can accommodate wheels up to 1-1/4" wide.



Type	Deluxe		Economy		Fits Shaft Dia.	Fits Wheel Hole	Thread	Max Wheel Width	Thread Length	O.A.L.
	Machined	Washer Dia.	Stamped	Washer Dia.						
B	AS-4	1 1/2	AS-4FS	1 5/8	1/2	1/2	R.H.	1 1/16	1 13/16	3 1/2
B	AS-5	1 1/2	AS-5FS	1 5/8	5/8	1/2	R.H.	1 1/16	1 13/16	3 1/2
B	AL-4	1 1/2	AL-4FS	1 5/8	1/2	1/2	L.H.	1 1/8	1 13/16	3 1/2
B	AL-5	1 1/2	AL-5FS	1 5/8	5/8	1/2	L.H.	1 1/8	1 13/16	3 1/2
B	AL-6	1 1/2	AL-6FS	1 5/8	3/4	1/2	L.H.	1 1/8	1 13/16	3 1/2
B	AL-5-KW*	1 1/2			5/8	1/2	L.H.	1 1/4	1 13/16	3 1/2
B	AS-5-KW*	1 1/2			5/8	1/2	R.H.	1 3/16	1 13/16	3 1/2

*AL-5-KW and AS-5-KW have a keyway.



CLESCO

"The Abrasive Hardware Specialist"

Motor & Grinder Shaft Arbors

Type C "Extra Long"

Similar to Type B except the threaded portion is longer at 2-5/8" which can accommodate wheels up to 2" wide.



Type	Deluxe		Economy		Fits Shaft Dia.	Fits Wheel Hole	Thread	Max Wheel Width	Thread Length	O.A.L.
	Machined	Washer Dia.	Stamped	Washer Dia.						
C	A-3	1 1/2	A-3FS	1 5/8	3/8	1/2	R.H.	1 13/16	2 1/2	4 1/16
C	A-4	1 1/2	A-4FS	1 5/8	1/2	1/2	R.H.	1 13/16	2 1/2	4 1/16
C	A-5	1 1/2	A-5FS	1 5/8	5/8	1/2	R.H.	1 3/4	2 1/2	4 1/16
C	A-6	1 1/2	A-6FS	1 5/8	3/4	1/2	R.H.	1 3/4	2 1/2	4 1/16

Type D "Heavy Duty"

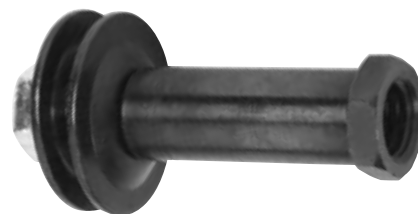
Designed especially for larger buffing & polishing units. The wide shoulder provides plenty of clearance plus ample space for easy movement & positioning of work pieces.



Type	Deluxe		Economy		Fits Shaft Dia.	Fits Wheel Hole	Thread	Max Wheel Width	Thread Length	O.A.L.
	Machined	Washer Dia.	Stamped	Washer Dia.						
D	AS-4-L	1 1/2	AS-4FS-L	1 5/8	1/2	1/2	R.H.	1 5/8	2 1/4	6 1/4
D	AS-5-L	1 1/2	AS-5FS-L	1 5/8	5/8	1/2	R.H.	1 5/8	2 1/4	6 1/4
D	AL-4-L	1 1/2	AL-4FS-L	1 5/8	1/2	1/2	L.H.	1 5/8	2 1/4	6 1/4
D	AL-5-L	1 1/2	AL-5FS-L	1 5/8	5/8	1/2	L.H.	1 5/8	2 1/4	6 1/4

Type E "Screw Lock" for Threaded Shafts

Designed for Threaded Shafts. Hex adapter can be used with longer screws to mount thicker wheels.



Type	Deluxe		Economy		Fits Shaft Dia.	Fits Arbor Hole	Wheel Width up to:	O.A.L.
	Machined	Washer Dia.	Stamped	Washer Dia.				
E			GA-1	1 5/8	5/8-11	1/2	1/2	2 1/4
E	GA-2	1 1/2			5/8-11	5/8	1/2	3

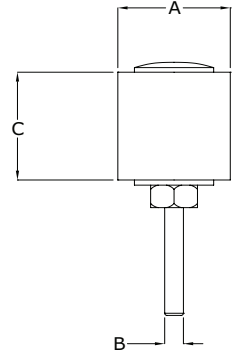


CLESCO
"The Abrasive Hardware Specialist"

Sanding Drums



- For mounting abrasive sanding sleeves
- Sleeves are secured in place by controlled expansion of the solid rubber drum spindle
- Rubber provides cushion backing for a smooth, even finish



Standard Screw Lock - with Shank

- Rubber expansion is controlled by tightening/loosening the slotted screw

(B) Shank Dia.	(A) Drum Dia.	(C) Drum Width			
		1/2"	3/4"	1"	1-1/2"
3/32	1/4	SD-004008-332SL			
3/32	3/8	SD-006008-332SL			
3/32	1/2	SD-008008-332SL			
3/32	3/4	SD-012008-332SL			
1/8	1/4	SD-004008-02SL	SD-004012-02SL	SD-004016-02SL	SD-004024-02SL
1/8	3/8	SD-006008-02SL	SD-006012-02SL	SD-006016-02SL	
1/8	1/2	SD-008008-02SL			
1/8	3/4	SD-012008-02SL			
1/4	1/4	SD-004008-04SL		SD-004016-04SL	
1/4	3/8	SD-006008-04SL		SD-006016-04SL	SD-006024-04SL
1/4	1/2	SD-008008-04SL			

Standard Nut Lock – with Shank

- Rubber expansion is controlled by tightening/loosening the hex nut
- The rubber spindle is seated directly on the drive mandrel (arbor)



(B) Shank Dia.	(A) Drum Dia.	(C) Drum Width					
		1/2"	3/4"	1"	1-1/2"	2"	3"
1/8	3/8	SD-006008-02NL					
1/8	1/2	SD-008008-02NL	SD-008012-02NL				
1/8	3/4	SD-012008-02NL	SD-012012-02NL				
1/4	1/2	SD-008008-04NL	SD-008012-04NL	SD-008016-04NL	SD-008024-04NL	SD-008032-04NL	SD-008048-04NL
1/4	5/8	SD-010008-04NL		SD-010016-04NL	SD-010024-04NL	SD-010032-04NL	SD-010048-04NL
1/4	3/4	SD-012008-04NL	SD-012012-04NL	SD-012016-04NL	SD-012024-04NL	SD-012032-04NL	SD-012048-04NL
1/4	1	SD-016008-04NL	SD-016012-04NL	SD-016016-04NL	SD-016024-04NL	SD-016032-04NL	SD-016048-04NL
1/4	1 1/4	SD-020008-04NL	SD-020012-04NL	SD-020016-04NL	SD-020024-04NL	SD-020032-04NL	SD-020048-04NL
1/4	1 1/2	SD-024008-04NL		SD-024016-04NL	SD-024024-04NL	SD-024032-04NL	SD-024048-04NL
1/4	1 3/4					SD-028032-04NL	
1/4	2			SD-032016-04NL	SD-032024-04NL	SD-032032-04NL	SD-032048-04NL
3/8	2						SD-032048-06NL
1/4	2 1/4						SD-036048-04NL
3/8	2 1/4						SD-036048-06NL
1/4	3			SD-048016-04NL		SD-048032-04NL	SD-048048-04NL
3/8	3			SD-048016-06NL		SD-048032-06NL	SD-048048-06NL
1/2	3						SD-048048-08NL

*Maximum RPM's for Clesco Sanding Drums can be found on page 19.

www.climaxmetal.com

Phone: 1-800-542-6552 Fax: 1-800-860-5553

Quick Lock – with Shank



CLESCO

"The Abrasive Hardware Specialist"

- Rubber expansion for these drums is controlled by simply twisting the rubber spindle by hand, no tools necessary
- Turn spindle clockwise to expand rubber for quick-lock, and counter clockwise to loosen for quick-change
- The rubber spindle is seated directly on the drive mandrel (arbor)



(B) Shank Dia.	(A) Drum Dia.	(C) Drum Width					
		1/2"	3/4"	1"	1-1/2"	2"	3"
1/4	1/2	SD-008008-04QL	SD-008012-04QL	SD-008016-04QL	SD-008024-04QL	SD-008032-04QL	SD-008048-04QL
1/4	5/8	SD-010008-04QL		SD-010016-04QL	SD-010024-04QL		
1/4	3/4	SD-012008-04QL	SD-012012-04QL	SD-012016-04QL	SD-012024-04QL	SD-012032-04QL	SD-012048-04QL
1/4	1	SD-016008-04QL	SD-016012-04QL	SD-016016-04QL	SD-016024-04QL	SD-016032-04QL	SD-016048-04QL
1/4	1 1/4			SD-020016-04QL		SD-020032-04QL	
1/4	1 1/2			SD-024016-04QL	SD-024024-04QL	SD-024032-04QL	SD-024048-04QL
1/4	1 3/4					SD-028032-04QL	
1/4	2			SD-032016-04QL	SD-032024-04QL	SD-032032-04QL	SD-032048-04QL
1/4	2 1/4					SD-036032-04QL	SD-036048-04QL
1/4	3					SD-048032-04QL	SD-048048-04QL
3/8	1/2						SD-008048-06QL
3/8	1						SD-016048-06QL
3/8	1 1/2						SD-024048-06QL
3/8	3						SD-048048-06QL

Shaft Mount Sanding Drums

- Rubber expansion is controlled by tightening/loosening the hex nut
- Drums for mounting on threaded shafts have a matching internal threaded bore
- Drums for mounting on smooth round shafts are secured to the shaft with two socket setscrews
- Drums for a 1/2" smooth round shaft can also be converted for use in a drill press with a 1/2" chuck capacity by using a shaft adapter
- Ideal for motors, grinders, flex shafts & bench mandrels



Drum Dia.	Bore	Drum Width		
		1"	2"	3"
3	1/2	SD-048016-08MD	SD-048032-08MD	SD-048048-08MD
3	5/8			SD-048048-10MD
3	3/4			SD-048048-12MD

Convertible Sanding Drums



Catalog #	Description
SD048048-08MP4	3" X 3" Drum with 1/2" bore- with shaft adapter
SD048048-08MDP	3" X 3" Drum with 1/2" bore- with shaft adapter and 80A sleeve

Threaded Shaft Sanding Drums

Drum Dia.	Bore	Drum Width 3"
3	1/2-20RH	SD-048048-12FD
3	5/8-11RH	SD-048048-58FD

*Maximum RPM's for Clesco Sanding Drums can be found on page 19.



CLESCO

"The Abrasive Hardware Specialist"

Sanding Drum Kits

Features an assortment of popular drum sizes.

Kits include one fine grit & one coarse grit sleeve for each drum size in kit.

Drum Kit SDK-1

Standard General Purpose Kit

Sanding Drum Size Dia. x Width	Shank Dia.	Drum	Sanding Sleeves 1 Each	
			Fine 120 Grit	Coarse 50 Grit
1/2 X 1/2	1/8	SD-008008-02NL	SS-008008-120A	SS-008008-050A
3/4 X 1	1/4	SD-012016-04NL	SS-012016-120A	SS-012016-050A
1 X 1	1/4	SD-016016-04NL	SS-016016-120A	SS-016016-050A
1-1/2 X 1-1/2	1/4	SD-024024-04NL	SS-024024-120A	SS-024024-050A
2 X 1-1/2	1/4	SD-032024-04NL	SS-032024-120A	SS-032024-050A

Drum Kit QLK-15

Deluxe Quick-Lock General Purpose Kit

Sanding Drum Size Dia. x Width	Shank Dia.	Drum	Sanding Sleeves 1 Each	
			Fine 120 Grit	Coarse 50 Grit
1/2 X 1/2	1/8	SD-008008-04QL	SS-008008-120A	SS-008008-050A
3/4 X 1	1/4	SD-012016-04QL	SS-012016-120A	SS-012016-050A
1 X 1	1/4	SD-016016-04QL	SS-016016-120A	SS-016016-050A
1-1/2 X 1-1/2	1/4	SD-024024-04QL	SS-024024-120A	SS-024024-050A
2 X 1-1/2	1/4	SD-032024-04QL	SS-032024-120A	SS-032024-050A

Replacement Sleeves for Drum Kits SDK-1 & QLK-15



Sanding Drum Size Dia. x Width	6-Pack		9 pc Assort (3 Each Grit)	
	Fine 120 Grit	Medium 80 Grit	Coarse 50 Grit	
1/2 X 1/2	SS-008008-120A6	SS-008008-080A6	SS-008008-050A6	SS-008008-9PK
3/4 X 1	SS-012016-120A6	SS-012016-080A6	SS-012016-050A6	SS-012016-9PK
1 X 1	SS-016016-120A6	SS-016016-080A6	SS-016016-050A6	SS-016016-9PK
1-1/2 X 1-1/2	SS-024024-120A6	SS-024024-080A6	SS-024024-050A6	SS-024024-9PK
2 X 1-1/2	SS-032024-120A6	SS-032024-080A6	SS-032024-050A6	SS-032024-9PK

Drum Kit SDK-2

Standard Extra Long Kit

Sanding Drum Size Dia. x Width	Shank Dia.	Drum	Sanding Sleeves 1 Each	
			Fine 120 Grit	Coarse 50 Grit
1/2 X 2	1/4	SD-008032-04NL	SS-008032-120A	SS-008032-050A
3/4 X 2	1/4	SD-012032-04NL	SS-012032-120A	SS-012032-050A
1 X 2	1/4	SD-016032-04NL	SS-016032-120A	SS-016032-050A
1-1/2 X 2	1/4	SD-024032-04NL	SS-024032-120A	SS-024032-050A

Drum Kit QLK-12

Deluxe Quick-Lock Extra Long Kit

Sanding Drum Size Dia. x Width	Shank Dia.	Drum	Sanding Sleeves 1 Each	
			Fine 120 Grit	Coarse 50 Grit
1/2 X 2	1/4	SD-008032-04QL	SS-008032-120A	SS-008032-050A
3/4 X 2	1/4	SD-012032-04QL	SS-012032-120A	SS-012032-050A
1 X 2	1/4	SD-016032-04QL	SS-016032-120A	SS-016032-050A
1-1/2 X 2	1/4	SD-024032-04QL	SS-024032-120A	SS-024032-050A

Replacement Sleeves for Drum Kits SDK-2 & QLK-12



Sanding Drum Size Dia. x Width	6-Pack		9 pc Assort (3 Each Grit)	
	Fine 120 Grit	Medium 80 Grit	Coarse 50 Grit	
1/2 X 2	SS-008032-120A6	SS-008032-080A6	SS-008032-050A6	SS-008032-9PK
3/4 X 2	SS-012032-120A6	SS-012032-080A6	SS-012032-050A6	SS-012032-9PK
1 X 2	SS-016032-120A6	SS-016032-080A6	SS-016032-050A6	SS-016032-9PK
1-1/2 X 2	SS-024032-120A6	SS-024032-080A6	SS-024032-050A6	SS-024032-9PK



CLESCO

"The Abrasive Hardware Specialist"

Sanding Drum Kits

Features an assortment of popular drum sizes
Kits include one fine grit & one coarse grit sleeve for each drum size in kit.

Drum Kit SDK-3 Standard Super Long Kit

Sanding Drum Size Dia. x Width	Shank Dia.	Drum	Sanding Sleeves 1 Each	
			Fine 120 Grit	Coarse 50 Grit
1/2 X 3	1/4	SD-008048-04NL	SS-008048-120A	SS-008048-050A
1 X 3	1/4	SD-016048-04NL	SS-016048-120A	SS-016048-050A
1-1/2 X 3	1/4	SD-024048-04NL	SS-024048-120A	SS-024048-050A

Drum Kit QLK-3 Deluxe Quick-Lock Super Long Kits

Sanding Drum Size Dia. x Width	Shank Dia.	Drum	Sanding Sleeves 1 Each	
			Fine 120 Grit	Coarse 50 Grit
1/2 X 3	1/4	SD-008048-04QL	SS-008048-120A	SS-008048-050A
1 X 3	1/4	SD-016048-04QL	SS-016048-120A	SS-016048-050A
1-1/2 X 3	1/4	SD-024048-04QL	SS-024048-120A	SS-024048-050A

Replacement Sleeves for Drum Kits SDK-3 & QLK-3

Sanding Drum Size Dia. x Width	6-Pack	6-Pack	6-Pack	9 pc Assort
	Fine 120 Grit	Medium 80 Grit	Coarse 50 Grit	(3 Each Grit)
1/2 X 3	SS-008048-120A6	SS-008048-080A6	SS-008048-050A6	SS-008048-9PK
1 X 3	SS-016048-120A6	SS-016048-080A6	SS-016048-050A6	SS-016048-9PK
1-1/2 X 3	SS-024048-120A6	SS-024048-080A6	SS-024048-050A6	SS-024048-9PK



Drum Kit SDK-20 Standard Mini-Size Kit

Sanding Drum Size Dia. x Width	Shank Dia.	Drum	Sanding Sleeves 1 Each	
			Fine 120 Grit	Coarse 50 Grit
3/8 X 1/2	1/8	SD-006008-02NL	SS-006008-120A	SS-006008-050A
1/2 X 1/2	1/8	SD-008008-02NL	SS-008008-120A	SS-008008-050A
1/2 X 3/4	1/8	SD-008012-02NL	SS-008012-120A	SS-008012-050A
3/4 X 1/2	1/8	SD-012008-02NL	SS-012008-120A	SS-012008-050A
3/4 X 3/4	1/8	SD-012012-02NL	SS-012012-120A	SS-012012-050A

Replacement Sleeves for Drum Kit SDK-20

Sanding Drum Size Dia. x Width	6-Pack	6-Pack	6-Pack	9 pc Assort
	Fine 120 Grit	Medium 80 Grit	Coarse 50 Grit	(3 Each Grit)
3/8 X 1/2	SS-006008-120A6	SS-006008-080A6	SS-006008-050A6	SS-006008-9PK
1/2 X 1/2	SS-008008-120A6	SS-008008-080A6	SS-008008-050A6	SS-008008-9PK
1/2 X 3/4	SS-008012-120A6	SS-008012-080A6	SS-008012-050A6	SS-008012-9PK
3/4 X 1/2	SS-012008-120A6	SS-012008-080A6	SS-012008-050A6	SS-012008-9PK
3/4 X 3/4	SS-012012-120A6	SS-012012-080A6	SS-012012-050A6	SS-012012-9PK





CLESCO

"The Abrasive Hardware Specialist"

Sanding Sleeve 36-Grit

For sizes 1" x 1" and smaller sold in bulk quantities of 100

For sizes larger than 1" x 1" sold in bulk quantities of 50

Spindle Drum Sanding Sleeves are sold per piece

- For Solid Rubber Drums
- Spiral coated-abrasive bands with resin-bond aluminum oxide and hard cloth back
- For sanding & polishing curves, corners, flat and irregular surfaces of all types of material



Spiral Coated Abrasive Sanding Sleeves Coarse 36-Grit

Dia.	Sanding Sleeves for Sanding Drum Width					
	1/2"	3/4"	1"	1-1/2"	2"	3"
1/4"						
3/8"			SS-006016-036A			
1/2"	SS-008008-036A	SS-008012-036A	SS-008016-036A		SS-008032-036A	
5/8"						
3/4"		SS-012012-036A	SS-012016-036A	SS-012024-036A	SS-012032-036A	
1"			SS-016016-036A	SS-016024-036A	SS-016032-036A	SS-016048-036A
1-1/2"			SS-024016-036A	SS-024024-036A	SS-024032-036A	SS-024048-036A
2"			SS-032016-036A	SS-032024-036A	SS-032032-036A	SS-032048-036A
2-1/4"						
3"			SS-048016-036A		SS-048032-036A	SS-048048-036A

* Additional Grits & Sizes available - priced on request. Minimum quantity applies to non-cataloged items.

* Sanding Sleeves have a limited shelf life and should be used within 6 months of purchase.

Dia.	Sanding Sleeves for Spindle Drum Width	
	4-1/2"	9"
1/4"		
3/8"		
1/2"		SS-008144-036A
5/8"		
3/4"		
1"	SS-016072-036A	SS-016144-036A
1-1/2"		SS-024144-036A
2"	SS-032072-036A	SS-032144-036A
2-1/4"		
3"		SS-048144-036A



CLESCO

"The Abrasive Hardware Specialist"

Sanding Sleeve 50-Grit

For sizes 1" x 1" and smaller sold in bulk quantities of 100

For sizes larger than 1" x 1" sold in bulk quantities of 50

Spindle Drum Sanding Sleeves are sold per piece

- For Solid Rubber Drums
- Spiral coated-abrasive bands with resin-bond aluminum oxide and hard cloth back
- For sanding & polishing curves, corners, flat and irregular surfaces of all types of material



Spiral Coated Abrasive Sanding Sleeves Coarse 50-Grit

Dia.	Sanding Sleeves for Sanding Drum Width					
	1/2"	3/4"	1"	1-1/2"	2"	3"
1/4"	SS-004008-050A		SS-004016-050A			SS-004048-050A
3/8"	SS-006008-050A		SS-006016-050A			
1/2"	SS-008008-050A	SS-008012-050A	SS-008016-050A	SS-008024-050A	SS-008032-050A	SS-008048-050A
5/8"		SS-010012-050A				SS-010048-050A
3/4"	SS-012008-050A	SS-012012-050A	SS-012016-050A	SS-012024-050A	SS-012032-050A	SS-012048-050A
1"	SS-016008-050A	SS-016012-050A	SS-016016-050A	SS-016024-050A	SS-016032-050A	SS-016048-050A
1-1/2"			SS-024016-050A	SS-024024-050A	SS-024032-050A	SS-024048-050A
2"				SS-032024-050A	SS-032032-050A	SS-032048-050A
2-1/4"						SS-036048-050A
3"			SS-048016-050A			SS-048048-050A

* Additional Grits & Sizes available - priced on request. Minimum quantity applies to non-cataloged items.

* Sanding Sleeves have a limited shelf life and should be used within 6 months of purchase.

Dia.	Sanding Sleeves for Spindle Drum Width			
	4-1/2"	5-1/2"	6"	9"
1/4"		SS-004088-050A	SS-004096-050A	SS-004144-050A
3/8"		SS-006088-050A	SS-006096-050A	
1/2"	SS-008072-050A	SS-008088-050A	SS-008096-050A	SS-008144-050A
5/8"		SS-010088-050A	SS-010096-050A	
3/4"	SS-012072-050A	SS-012088-050A	SS-012096-050A	SS-012144-050A
1"	SS-016072-050A	SS-016088-050A		SS-016144-050A
1-1/2"	SS-024072-050A	SS-024088-050A		SS-024144-050A
2"	SS-032072-050A	SS-032088-050A	SS-032096-050A	SS-032144-050A
2-1/4"	SS-036072-050A			
3"	SS-048072-050A	SS-048088-050A		SS-048144-050A



CLESCO

"The Abrasive Hardware Specialist"

Sanding Sleeve 80-Grit

For sizes 1" x 1" and smaller sold in bulk quantities of 100

For sizes larger than 1" x 1" sold in bulk quantities of 50

Spindle Drum Sanding Sleeves are sold per piece

- For Solid Rubber Drums
- Spiral coated-abrasive bands with resin-bond aluminum oxide and hard cloth back
- For sanding & polishing curves, corners, flat and irregular surfaces of all types of material



Spiral Coated Abrasive Sanding Sleeves Medium 80-Grit

Dia.	Sanding Sleeves for Sanding Drum Width					
	1/2"	3/4"	1"	1-1/2"	2"	3"
1/4"	SS-004008-080A		SS-004016-080A			SS-004048-080A
3/8"	SS-006008-080A		SS-006016-080A			SS-006048-080A
1/2"	SS-008008-080A	SS-008012-080A	SS-008016-080A		SS-008032-080A	SS-008048-080A
5/8"					SS-010032-080A	SS-010048-080A
3/4"	SS-012008-080A	SS-012012-080A	SS-012016-080A	SS-012024-080A	SS-012032-080A	SS-012048-080A
1"			SS-016016-080A	SS-016024-080A	SS-016032-080A	SS-016048-080A
1-1/2"			SS-024016-080A	SS-024024-080A	SS-024032-080A	SS-024048-080A
2"			SS-032016-080A	SS-032024-080A	SS-032032-080A	SS-032048-080A
2-1/4"						SS-036048-080A
3"						SS-048048-080A

* Additional Grits & Sizes available - priced on request. Minimum quantity applies to non-cataloged items.

* Sanding Sleeves have a limited shelf life and should be used within 6 months of purchase.

Dia.	Sanding Sleeves for Spindle Drum Width			
	4-1/2"	5-1/2"	6"	9"
1/4"		SS-004088-080A	SS-004096-080A	
3/8"		SS-006088-080A	SS-006096-080A	SS-006144-080A
1/2"	SS-008072-080A	SS-008088-080A	SS-008096-080A	SS-008144-080A
5/8"	SS-010072-080A	SS-010088-080A	SS-010096-080A	
3/4"	SS-012072-080A	SS-012088-080A		SS-012144-080A
1"	SS-016072-080A	SS-016088-080A		SS-016144-080A
1-1/2"	SS-024072-080A	SS-024088-080A		SS-024144-080A
2"	SS-032072-080A	SS-032088-080A		SS-032144-080A
2-1/4"				
3"	SS-048072-080A	SS-048088-080A		SS-048144-080A



CLESCO

"The Abrasive Hardware Specialist"

Sanding Sleeve 120-Grit

For sizes 1" x 1" and smaller sold in bulk quantities of 100

For sizes larger than 1" x 1" sold in bulk quantities of 50

Spindle Drum Sanding Sleeves are sold per piece

- For Solid Rubber Drums
- Spiral coated-abrasive bands with resin-bond aluminum oxide and hard cloth back
- For sanding & polishing curves, corners, flat and irregular surfaces of all types of material



Spiral Coated Abrasive Sanding Sleeves Fine 120-Grit

Dia.	Sanding Sleeves for Sanding Drum Width					
	1/2"	3/4"	1"	1-1/2"	2"	3"
1/4"	SS-004008-120A		SS-004016-120A	SS-004024-120A		SS-004048-120A
3/8"	SS-006008-120A		SS-006016-120A	SS-006024-120A	SS-006032-120A	
1/2"	SS-008008-120A	SS-008012-120A	SS-008016-120A	SS-008024-120A	SS-008032-120A	SS-008048-120A
5/8"		SS-010012-120A			SS-010032-120A	
3/4"	SS-012008-120A	SS-012012-120A	SS-012016-120A	SS-012024-120A	SS-012032-120A	SS-012048-120A
1"			SS-016016-120A	SS-016024-120A	SS-016032-120A	SS-016048-120A
1-1/2"			SS-024016-120A	SS-024024-120A	SS-024032-120A	SS-024048-120A
2"			SS-032016-120A	SS-032024-120A	SS-032032-120A	SS-032048-120A
2-1/4"						SS-036048-120A
3"			SS-048016-120A		SS-048032-120A	SS-048048-120A

* Additional Grits & Sizes available - priced on request. Minimum quantity applies to non-cataloged items.

* Sanding Sleeves have a limited shelf life and should be used within 6 months of purchase.

Dia.	Sanding Sleeves for Spindle Drum Width			
	4-1/2"	5-1/2"	6"	9"
1/4"		SS-004088-120A	SS-004096-120A	
3/8"		SS-006088-120A	SS-006096-120A	SS-006144-120A
1/2"	SS-008072-120A	SS-008088-120A	SS-008096-120A	
5/8"		SS-010088-120A	SS-010096-120A	
3/4"	SS-012072-120A	SS-012088-120A	SS-012096-120A	SS-012144-120A
1"	SS-016072-120A	SS-016088-120A	SS-016096-120A	
1-1/2"	SS-024072-120A	SS-024088-120A	SS-024096-120A	SS-024144-120A
2"	SS-032072-120A	SS-032088-120A	SS-032096-120A	SS-032144-120A
2-1/4"				
3"	SS-048072-120A	SS-048088-120A		SS-048144-120A



CLESCO

"The Abrasive Hardware Specialist"

Sanding Sleeve Assortment Packs - Standard Type

- Poly-bagged assortments of popular sizes/grits as indicated
- Other combinations quoted on request



(A) Drum Dia.	(B) Drum Width	Coarse 50 Grit 6 pack	Medium 80 Grit 6 pack	Fine 120 Grit 6 pack	Assorted 3 ea Grit 9 pack
1/4	1/2	SS-004008-050A6	SS-004008-080A6	SS-004008-120A6	SS-004008-9PK
3/8	1/2	SS-006008-050A6	SS-006008-080A6	SS-006008-120A6	SS-006008-9PK
1/2	1/2	SS-008008-050A6	SS-008008-080A6	SS-008008-120A6	SS-008008-9PK
1/2	3/4	SS-008012-050A6	SS-008012-080A6	SS-008012-120A6	SS-008012-9PK
1/2	2	SS-008032-050A6	SS-008032-080A6	SS-008032-120A6	SS-008032-9PK
1/2	3	SS-008048-050A6	SS-008048-080A6	SS-008048-120A6	SS-008048-9PK
3/4	1/2	SS-012008-050A6	SS-012008-080A6	SS-012008-120A6	SS-012008-9PK
3/4	3/4	SS-012012-050A6	SS-012012-080A6	SS-012012-120A6	SS-012012-9PK
3/4	1	SS-012016-050A6	SS-012016-080A6	SS-012016-120A6	SS-012016-9PK
3/4	2	SS-012032-050A6	SS-012032-080A6	SS-012032-120A6	SS-012032-9PK
1	1	SS-016016-050A6	SS-016016-080A6	SS-016016-120A6	SS-016016-9PK
1	2	SS-016032-050A6	SS-016032-080A6	SS-016032-120A6	SS-016032-9PK
1	3	SS-016048-050A6	SS-016048-080A6	SS-016048-120A6	SS-016048-9PK
1 1/2	1 1/2	SS-024024-050A6	SS-024024-080A6	SS-024024-120A6	SS-024024-9PK
1 1/2	2	SS-024032-050A6	SS-024032-080A6	SS-024032-120A6	SS-024032-9PK
1 1/2	3	SS-024048-050A6	SS-024048-080A6	SS-024048-120A6	SS-024048-9PK
2	1 1/2	SS-032024-050A6	SS-032024-080A6	SS-032024-120A6	SS-032024-9PK
2	2	SS-032032-050A6	SS-032032-080A6	SS-032032-120A6	SS-032032-9PK
2	3	SS-032048-050A6	SS-032048-080A6	SS-032048-120A6	SS-032048-9PK
3	3	SS-048048-050A6	SS-048048-080A6	SS-048048-120A6	SS-048048-9PK

* Sanding Sleeves have a limited shelf life and should be used within 6 months of purchase.



CLESCO

"The Abrasive Hardware Specialist"

Specials

Clesco has the capability to produce custom machined parts & assemblies. Additionally, custom packaging is available. Often a slight modification to our standard product line allows for efficient production to meet your needs. Contact customer service at 1-800-542-6552 with your request.



Maximum RPM Rating for Clesco Sanding Drums

Drum Dia.	Drum Width	Shank Dia.	Max. rpm
1/4"	1/2"	1/8"	30,000
1/4"	3/4"	1/8"	22,000
1/4"	1"	1/8"	20,000
3/8"	1/2"	1/8"	30,000
3/8"	1"	1/8"	18,000
1/2"	1/2"	1/8"	30,000
1/2"	1/2"	1/4"	30,000
1/2"	3/4"	1/8"	18,000
1/2"	3/4"	1/4"	25,000
1/2"	1"	1/4"	20,000
1/2"	1 1/2"	1/4"	14,000
1/2"	2"	1/4"	10,000
5/8"	1/2"	1/4"	27,000

Drum Dia.	Drum Width	Shank Dia.	Max. rpm
5/8"	1"	1/4"	19,000
3/4"	1/2"	1/4"	27,000
3/4"	3/4"	1/4"	24,000
3/4"	1"	1/4"	19,000
3/4"	1 1/2"	1/4"	12,000
3/4"	2"	1/4"	9,000
1"	1/2"	1/4"	18,000
1"	3/4"	1/4"	15,000
1"	1"	1/4"	15,000
1"	1 1/2"	1/4"	10,000
1"	2"	1/4"	8,000
1"	3"	1/4"	5,000
1 1/4"	1"	1/4"	14,000

Drum Dia.	Drum Width	Shank Dia.	Max. rpm
1 1/4"	2"	1/4"	7,000
1 1/2"	1"	1/4"	14,000
1 1/2"	1 1/2"	1/4"	10,000
1 1/2"	2"	1/4"	7,000
2"	1"	1/4"	11,000
2"	1 1/2"	1/4"	8,000
2"	2"	1/4"	6,000
3"	1"	1/4"	3,000
3"	1"	3/8"	3,000
3"	2"	1/4"	3,000
3"	2"	3/8"	3,000
3"	3"	3/8"	3,000

Safety Warning: Power tool accessories and hand tools are dangerous when used improperly. Comply with all safety regulations as set by the American National Standards Institute (ANSI) and Occupational Safety and Health Administration (OSHA). Always protect face, eyes, and body when using hand and power tools.

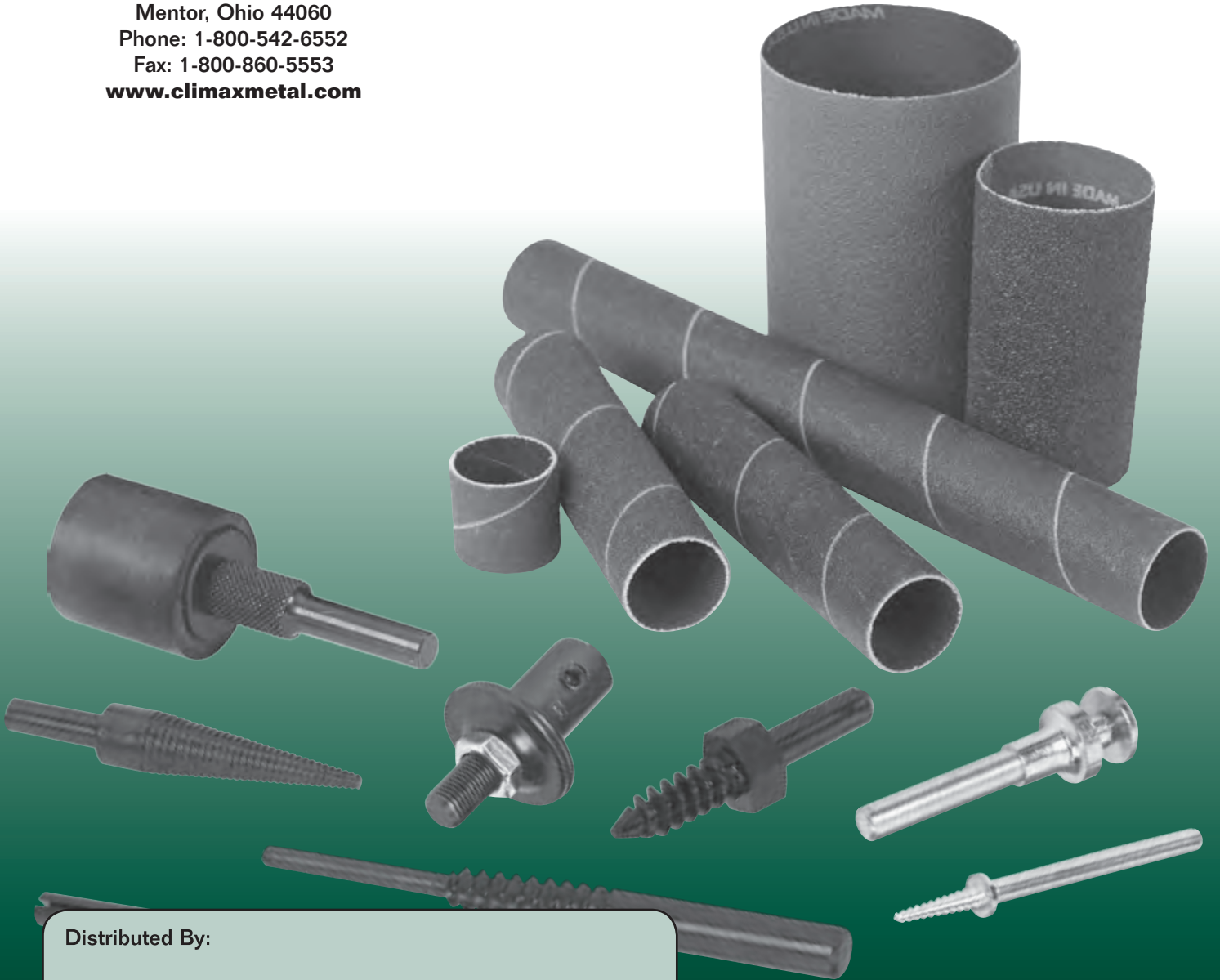
Disclaimer: Please Note dimensional differences may exist from Manufacturer to Manufacturer. While size may vary slightly, in no way does this effect form, fit or function. For exact product specifications, please contact the factory at 800.542.6552.

Warranty: Clesco, a wholly owned subsidiary of **Climax Metal Products Company**, warrants that all parts listed in this catalog meet the size and material specifications within. Any non-conforming product will be replaced or the purchased price refunded at the Company's option. The user is responsible for determining the suitability of a part for a particular application and performance. No employee of Clesco or its agents has the authority to represent these products for a particular application or use. Clesco's liability is limited to the price of the part and neither Clesco nor the seller's liability shall exceed the price of the part.



CLESCO

8141 Tyler Blvd.
Mentor, Ohio 44060
Phone: 1-800-542-6552
Fax: 1-800-860-5553
www.climaxmetal.com



Distributed By: