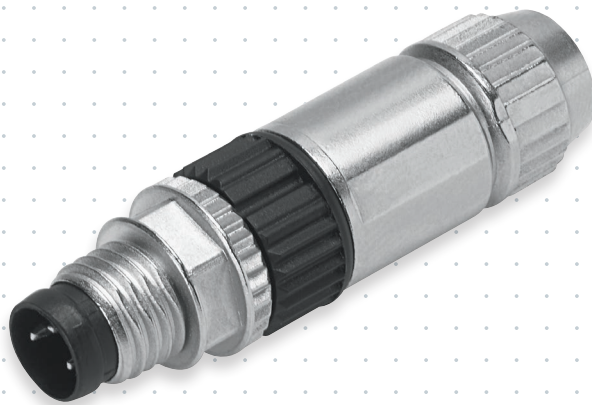




Quick plug connector NECU



Highlights

- Quick to assemble
- No tools needed
- Cost-effective

Quick plug connector NECU – for both valves and sensors. With the NECU, you can make significant savings when attaching open-ended connecting cables. Assembly time is much shorter and a minimised variety of types reduces inventory and makes inventory management easier.

Systematically faster

The plug, in sizes M8 and M12, 3-pin and 4-pin, can be assembled in no time at all, ensuring a problem-free connection of all unshielded Festo cable types with a wide range of cable diameters – whether connecting cables or sensors with a moulded cable. And all without tools, in just four steps: cut the cable to length, strip the cable, place the cores into the insert, tighten the casing, and you're ready! This is how, for example, a CPX terminal can be connected easily and safely. The time saving is guaran-

teed to pay off, especially in special machine building and automation technology.

Everything from a single source

Perfectly equipped for every application: optimally coordinated combinations with NECU make your systems not only more economical, but also more reliable.

NECU = perfectly well thought out!



Additional information:

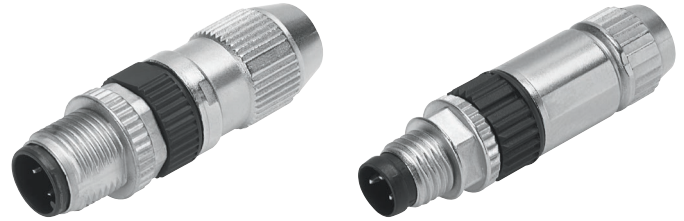
Product page

> www.festo.com/catalogue/necu



Benefits

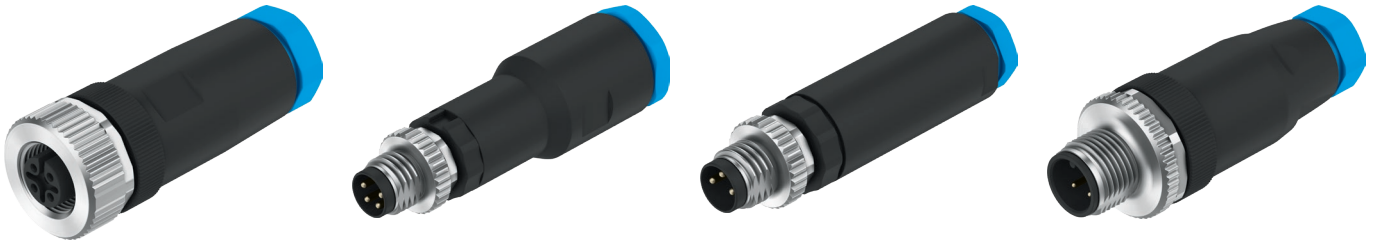
- Saves time thanks to simple assembly principle: insert, screw in – done
- Quick and safe connection of the cable ends
- Complete assembly without tools
- One plug connector for all cable types from Festo
- With both M8 and M12 connections



Technical data

| | NECU-S-M8...-HX-Q3 | NECU-S-M8...-HX | NECU-S-M12...-HX | NECU-S-M12...-HX-Q7 |
|--|--------------------|-----------------|------------------|---------------------|
| Nominal cross section of core [mm ²] | 0.10 ... 0.14 | 0.14 ... 0.34 | 0.14 ... 0.34 | 0.34 ... 0.75 |
| Operational voltage range AC/DC [V] | 0 ... 32 | 0 ... 32 | 0 ... 32 | 0 ... 48 |
| Current rating at 40 °C [A] | 2 | 4 | 4 | 6 |
| Degree of protection | IP65, IP67 | | | |

Other variants with standard connection technology from the plug connector range NECB



Additional connecting cables NEBA and NEBB and the distributors NEDY are also available.