

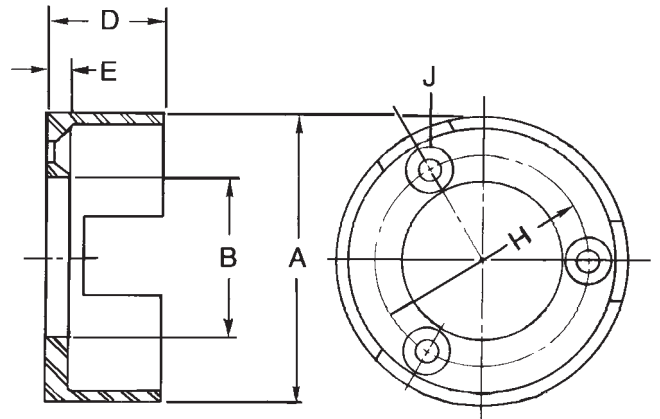
# Internal Flange Type Driving Cup

For use with clutch and brake models MMS, MMD and torque limiter model TL



Carlyle Johnson Maxitorq® internal flange type driving cups are designed to provide an economical means of adapting the clutch or brake to various types of driven or driving members with a pulley, fly wheel, sprocket, gear, or sheave by means of flathead screws. Cups are hardened for long life and durability. The internal flange drive cup has a smaller outside diameter and a lower inertia, than the ring type driving cup.

Available in special materials, surface finishes, and with custom modifications.



## Specifications

Model	A	B	D	E	H	J - Flathead Screw Size	Number of Mounting Holes	Number of Slots
MMS0020-106-300	2.195-2.190	1.033-1.031	0.668	.188	1.500	8	3	3
MMS0021-106-300	2.195-2.190	1.033-1.031	1.031	.188	1.500	8	3	3
MMS0022-106-300	2.760-2.755	1.439-1.437	1.156	.188	1.936	10	3	3
MMS0023-106-300	3.572-3.567	1.939-1.937	1.406	.250	2.563	1/4	3	3
MMS0024-106-300	4.072-4.067	2.064-2.062	1.438	.281	2.875	5/16	3	3
MMS0025-106-300	4.885-4.880	2.564-2.562	1.719	.313	3.500	5/16	5	8
MMS0026-106-300	5.885-5.880	3.627-3.625	1.906	.313	4.500	5/16	5	12
MMS0027-106-300	7.510-7.505	4.753-4.750	2.313	.313	5.813	7/16	5	12
MMS0028-106-300	8.510-8.505	5.753-5.750	2.500	.313	6.813	7/16	6	12

All dimensions above shown in inches.

Internal Flange Type Driving Cup - Rev 05/2014

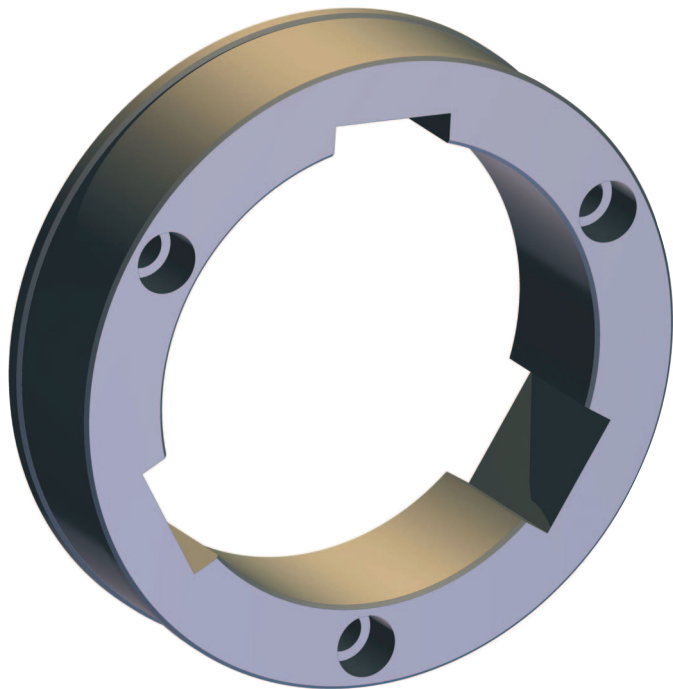


[www.cjmco.com](http://www.cjmco.com)

291 Boston Turnpike, Bolton, CT 06043  
Main Phone: 860-643-1531 • FAX: 860-646-2645

# Ring Type Driving Cups

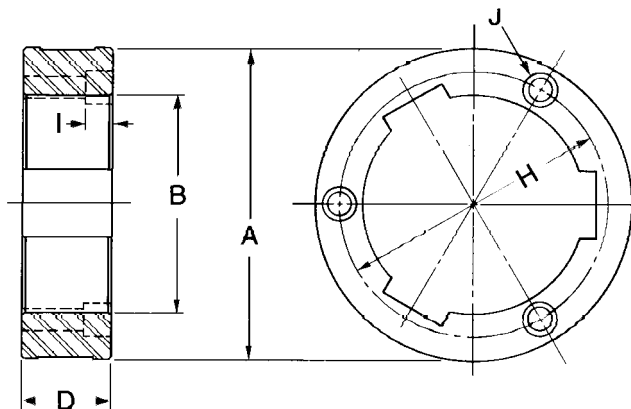
For use with clutch and brake models MMS, MMD and torque limiter model TL



Carlyle Johnson Maxitorq® ring type driving cups are designed to provide an economical means of adapting the clutch or brake to various types of driven or driving members. Cups are made to precise specifications and hardened for long life and durability.

The ring type driving cups enclose the multiple discs, helping to prevent entry of dust, dirt or other harmful materials getting into the mechanism as well as presenting a neat, compact appearance. They are made to permit piloting on the inside or outside diameter with a pulley, fly wheel, sprocket, gear, or sheave by means of a cap screw. They also offer the advantage of installation without change of present bearing design.

Available in special materials, surface finishes, and with custom modifications.



## Specifications

Model	A	B	D	H	I	J - Cap Screw Size	Number of Mounting Holes	Number of Slots
MMS0020-106-400	3.123-3.125	2.015-2.017	.668	2.563	.344	1/4	3	3
MMS0021-106-400	3.123-3.125	2.015-2.017	1.031	2.563	.344	1/4	3	3
MMS0022-106-400	3.623-3.625	2.515-2.517	1.156	3.062	.344	1/4	3	3
MMS0023-106-400	4.623-4.625	3.265-3.267	1.313	3.938	.406	5/16	3	3
MMS0024-106-400	5.123-5.125	3.765-3.767	1.313	4.438	.406	5/16	3	3
MMS0025-106-400	6.123-6.125	4.515-4.517	1.594	5.313	.531	3/8	4	8
MMS0026-106-400	7.120-7.125	5.515-5.517	1.781	6.250	.531	3/8	6	12
MMS0027-106-400	9.120-9.125	7.015-7.017	2.188	8.063	.688	1/2	6	12
MMS0028-106-400	10.120-10.125	8.015-8.017	2.438	9.063	.688	1/2	6	12

All dimensions above shown in inches.

Ring Type Driving Cup - Rev 05/2014



[www.cjmco.com](http://www.cjmco.com)

291 Boston Turnpike, Bolton, CT 06043  
Main Phone: 860-643-1531 • FAX: 860-646-2645