



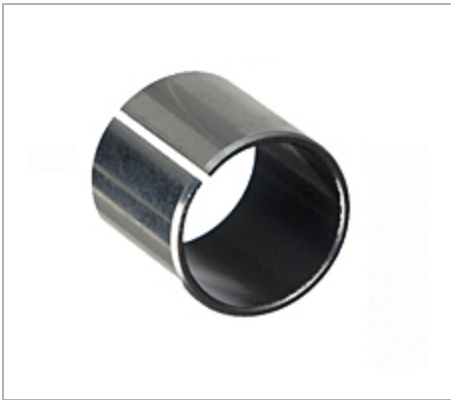
**Isostatic Industries, Inc.**  
 4153 North Kostner Avenue  
 Chicago, IL 60641  
**Toll Free:** 800.621.5500  
**Phone:** 773.286.3444  
**Fax:** 773.282.3323  
**Email:** [info@isostatic.com](mailto:info@isostatic.com)

## TU® Steel-Backed PTFE Lined Sleeve Bearings - INCH





### Isostatic TU® Sleeve Bearings

- Standard stock products
- Self-lubricating dry sliding bearing
- A steel-backed composite material comprised of:
  - Low carbon steel backing for extremely high load capacity-.50 – 2.7mm thick
  - Sintered bronze offers optimal heat dispersion –.20 - .35 mm thickness and
  - PTFE – lead sliding surface creates a low friction coefficient and allows for a wide temperature range – thickness .2 mm
- Can be used where many liquid lubricants fail; also performs well with lubrication
- 






[+ more](#)



1 2 3 4 5 »

<u>Catalog Number</u>	<u>Item #</u>	<u>Nominal Inner Diameter</u>	<u>Nominal Outer Diameter</u>	<u>Nominal Length</u>	<u>CAD</u>	<u>UPC Code</u>
02TU02	<a href="#">501001</a>	1/8 in	3/16 in	1/8 in		00846802052652
02TU03	<a href="#">501002</a>	1/8 in	3/16 in	3/16 in		00846802052669
025TU025	<a href="#">501003</a>	5/32 in	7/32 in	5/32 in		00846802052676
025TU04	<a href="#">501004</a>	5/32 in	7/32 in	1/4 in		00846802052683

<u>Catalog Number</u>	<u>Item #</u>	<u>Nominal Inner Diameter</u>	<u>Nominal Outer Diameter</u>	<u>Nominal Length</u>	<u>CAD</u>	<u>UPC Code</u>
03TU03	<a href="#"><u>501005</u></a>	3/16 in	1/4 in	3/16 in	CAD 	00846802052690
03TU04	<a href="#"><u>501006</u></a>	3/16 in	1/4 in	1/4 in	CAD 	00846802052706
03TU06	<a href="#"><u>501007</u></a>	3/16 in	1/4 in	3/8 in	CAD 	00846802052713
04TU04	<a href="#"><u>501008</u></a>	1/4 in	5/16 in	1/4 in	CAD 	00846802052720
04TU06	<a href="#"><u>501009</u></a>	1/4 in	5/16 in	3/8 in	CAD 	00846802052737
05TU06	<a href="#"><u>501010</u></a>	5/16 in	3/8 in	3/8 in	CAD 	00846802052744
05TU08	<a href="#"><u>501011</u></a>	5/16 in	3/8 in	1/2 in	CAD 	00846802052751
06TU03	<a href="#"><u>501012</u></a>	3/8 in	15/32 in	3/16 in	CAD 	00846802052768
06TU04	<a href="#"><u>501013</u></a>	3/8 in	15/32 in	1/4 in	CAD 	00846802052775
06TU06	<a href="#"><u>501014</u></a>	3/8 in	15/32 in	3/8 in	CAD 	00846802052782
06TU08	<a href="#"><u>501015</u></a>	3/8 in	15/32 in	1/2 in	CAD 	00846802052799
06TU10	<a href="#"><u>501016</u></a>	3/8 in	15/32 in	5/8 in	CAD 	00846802052805
06TU12	<a href="#"><u>501017</u></a>	3/8 in	15/32 in	3/4 in	CAD 	00846802052812
07TU08	<a href="#"><u>501018</u></a>	7/16 in	17/32 in	1/2 in	CAD 	00846802052829
07TU12	<a href="#"><u>501019</u></a>	7/16 in	17/32 in	3/4 in	CAD 	00846802052836

<u>Catalog Number</u>	<u>Item #</u>	<u>Nominal Inner Diameter</u>	<u>Nominal Outer Diameter</u>	<u>Nominal Length</u>	<u>CAD</u>	<u>UPC Code</u>
08TU04	<u>501020</u>	1/2 in	19/32 in	1/4 in	CAD 	00846802052843
08TU06	<u>501021</u>	1/2 in	19/32 in	3/8 in	CAD 	00846802052850
08TU08	<u>501022</u>	1/2 in	19/32 in	1/2 in	CAD 	00846802052867
08TU10	<u>501023</u>	1/2 in	19/32 in	5/8 in	CAD 	00846802052874
08TU12	<u>501024</u>	1/2 in	19/32 in	3/4 in	CAD 	00846802052881
08TU14	<u>501025</u>	1/2 in	19/32 in	7/8 in	CAD 	00846802052898