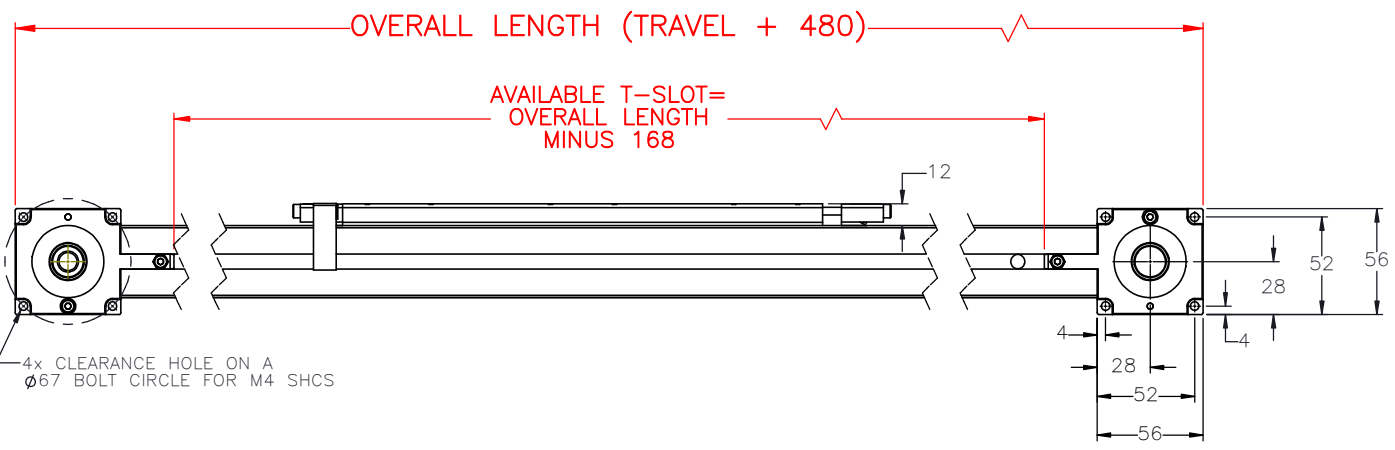
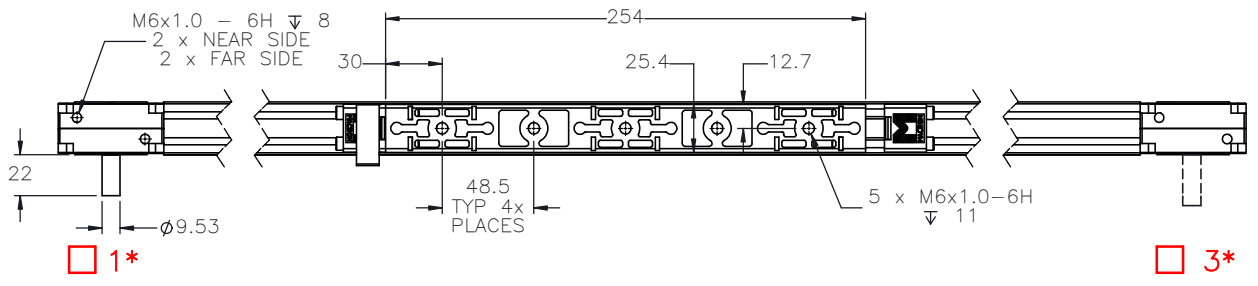
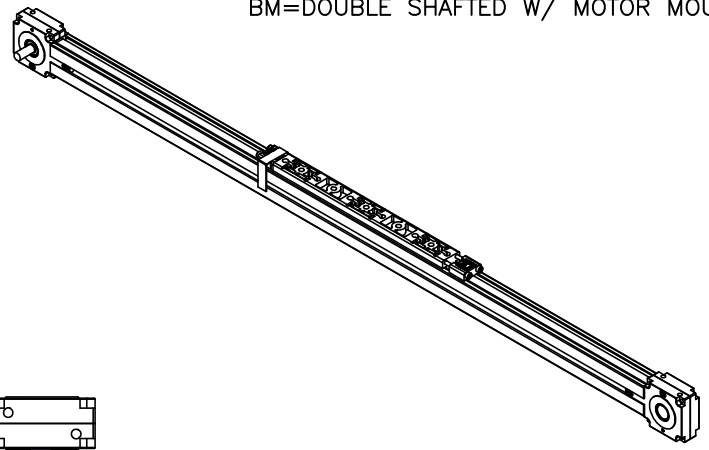


MSA-PSC-0-GB---

PULLEY PITCH DIAMETER	33.42mm (1.316")
PULLEY WIDTH	16.3mm (.640")
PULLEY MATERIAL	STEEL
BELT WEIGHT (kg)	$((\text{TRAVEL IN METERS} \times 2) + .69) \times .04$
TRAVEL PER REV.	105mm
TRAVEL MIN.	150mm
TRAVEL MAX.	5625mm
CART WEIGHT (kg)	0.18kg
SYSTEM WEIGHT (kg)	$(\text{TRAVEL IN METERS} \times 1.2) + 1.4$

ENTER TRAVEL IN INCREMENTS OF 25mm
 SELECT DRIVE SHAFT LOCATION*
 SHAFING TYPE
 A0= SINGLE SHAFED
 B0= DOUBLE SHAFED
 AM= SINGLE SHAFED W/ MOTOR MOUNT
 BM= DOUBLE SHAFED W/ MOTOR MOUNT

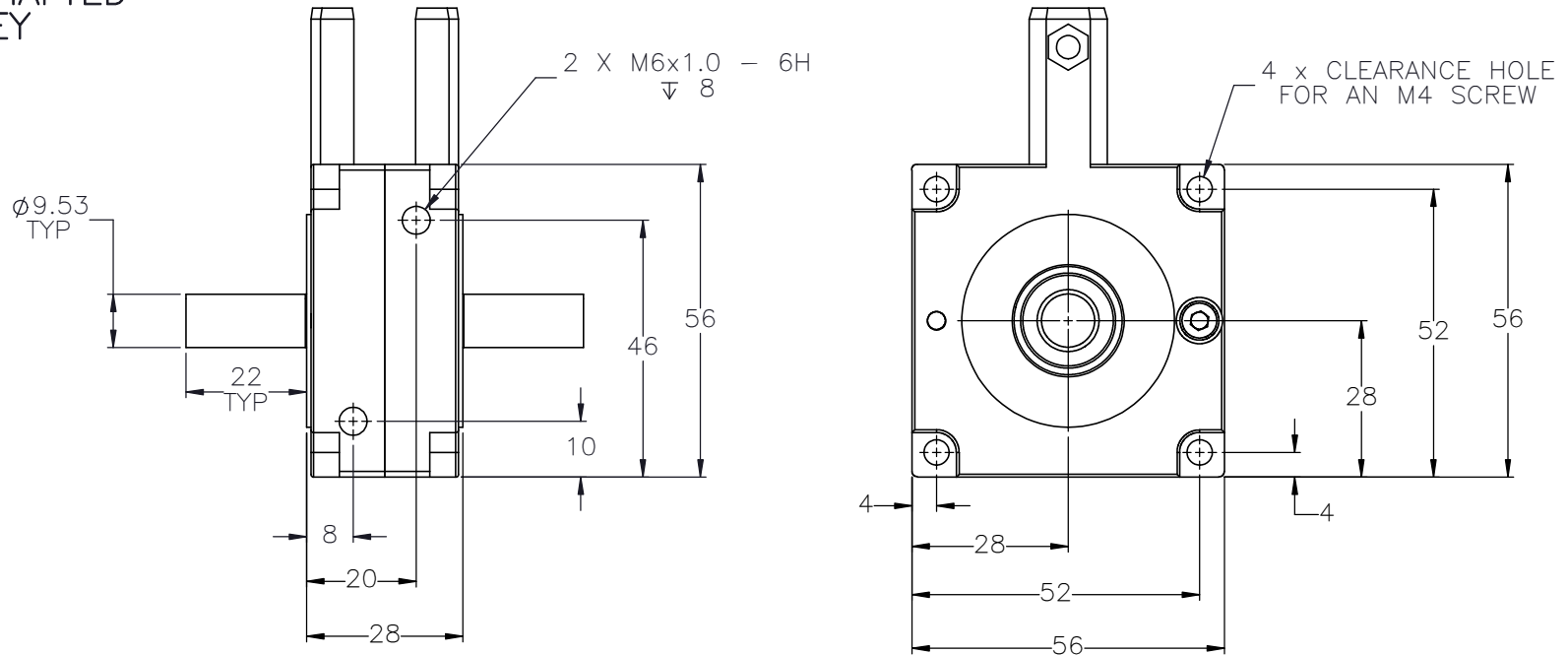


APPROVED: _____
 DATE: _____

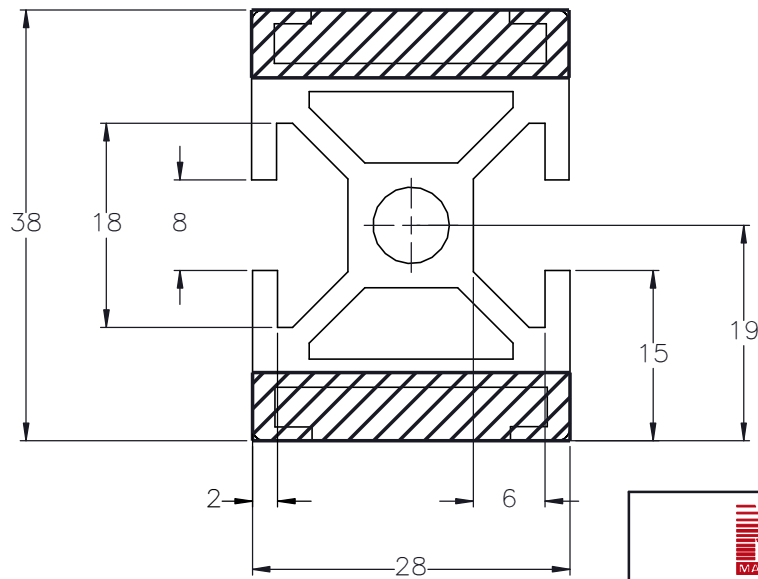
 MACRON DYNAMICS INC	DRAWN BY: PHW DATE: 11/26/2017 CHECKED BY: --- DATE: DD/MM/YYYY LAST SAVED BY: Tim DATE: 8/3/2020	MATERIAL:	TITLE: MACRON PSC ACTUATOR
	UNLESS OTHERWISE SPECIFIED: DIMENSIONS ARE IN MILLIMETERS TOLERANCES UNLESS NOTED OTHERWISE: .XX ± .254 .XXX ± .127 ANG ± 0°30'	FINISH:	
	SURFACE FINISH <input checked="" type="checkbox"/>	SCALE: 1:1 SHEET SIZE: C	
	BREAK ALL SHARP EDGES DIMENSIONAL LIMITS APPLY AFTER FINISHING THIRD ANGLE PROJECTION	SHEET: 1 OF 2 PART NUMBER: MSA-PSC	


SPECIFICATIONS ARE SUBJECT TO CHANGE WITHOUT NOTICE

DOUBLE SHAFTED PULLEY



ACTUATOR BODY T-SLOT MOUNTING FEATURES



 MACRON DYNAMICS INC	DRAWN BY: PHW DATE: 11/26/2017	MATERIAL:	TITLE: MACRON_PSC ACTUATOR
	CHECKED BY: -- DATE: DD/MM/YYYY	FINISH:	
	LAST SAVED BY: Tim DATE: 8/3/2020	.X ± .762 .XX ± .254 .XXX ± .127 OTHERWISE: ANG ± 0°30'	SCALE: 1:1 SHEET SIZE: C
	SURFACE FINISH: <input checked="" type="checkbox"/> BREAK ALL SHARP EDGES DIMENSIONAL LIMITS APPLY AFTER FINISHING THIRD ANGLE PROJECTION	SHEET: 2 OF 2 PART NUMBER: MSA-PSC	REV:

SPECIFICATIONS ARE SUBJECT TO CHANGE WITHOUT NOTICE

THIS DRAWING IS THE PROPERTY OF MACRON DYNAMICS. ANY REPRODUCTIONS SHALL BE FOR QUOTATION, MANUFACTURING, OR PURCHASING PURPOSES ONLY. RELEASE OF DRAWINGS TO OTHER CONCERNS DOES NOT CONSTITUTE LICENSING IN ANY WAY. INFORMATION CONTAINED HEREIN IS PROPRIETARY AND CONFIDENTIAL.