



your reliable partner



EAS[®]-reverse

EAS[®]-reverse disengaging torque limiter with automatic re-engagement

Type 4100. _0400



EAS[®]-reverse with bearing-supported flange for direct mounting of drive elements

Type 4103. _1400



EAS[®]-reverse double shaft design with a flexible, positive locking coupling (with switching disk + cover ring)



EAS[®]-reverse in housing with standard-conform dimensions

Perfect overload protection for drives which are hard to access

In case of adverse operating and ambient conditions due to dust, contamination, spray water, heat or cold, drive lines are frequently encapsulated and therefore hard to access, especially in the heavy machine industry. In order to protect such drives and machines reliably against overload, *mayr*[®] power transmission has developed a disengaging torque limiter with the EAS[®]-reverse on which all functional processes can be carried out automatically via the drive alone.

In case of overload, a patented disengagement mechanism disconnects the input and output without residual torque. The EAS[®]-reverse re-engages automatically in any angular position simply by rotating backwards slowly, without the need for pneumatics or hydraulics – ideal for drives which cannot be accessed for re-engagement.

For installation constellations with several coupled drives, please contact *mayr*[®] power transmission.

- Residual torque-free disconnection in case of overload
- Automatic re-engagement through reversal of direction of rotation
- Easy handling
- Completely sealed
- Robust double bearing
- Torque steplessly adjustable with scaled adjusting nut
- Extremely low-backlash (<0.05°)
- Hardened functional components
- Housing with standard IEC or NEMA dimensions
- Temperature range from -30 °C to +80 °C
- Optionally available with brake disk
- Optionally available with switching disk + cover ring (dimension F₂)

Order Number

with bearing-supported flange **0**
with flexible coupling **3**
with flexible coupling, insertable **4**

0 without switching disk + cover ring
1 with switching disk + cover ring

Torque adjustment value
[Nm]

__ / 4 1 0 __ . __ __ 4 0 0 / __ / __ / __

Size

Torque range ¹⁾

3

low

4

to

medium

5

6

high

6

very high

7

Hub 1 bore

Ø d^{H7}

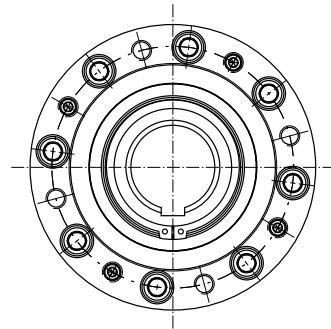
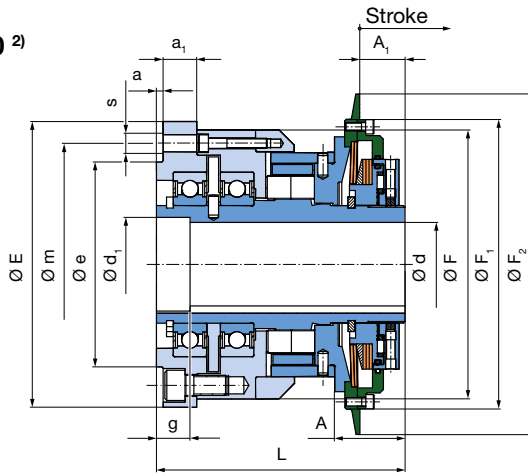
Hub 2 bore

Ø d₂^{H7}

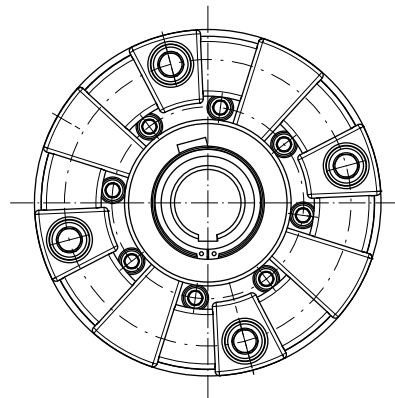
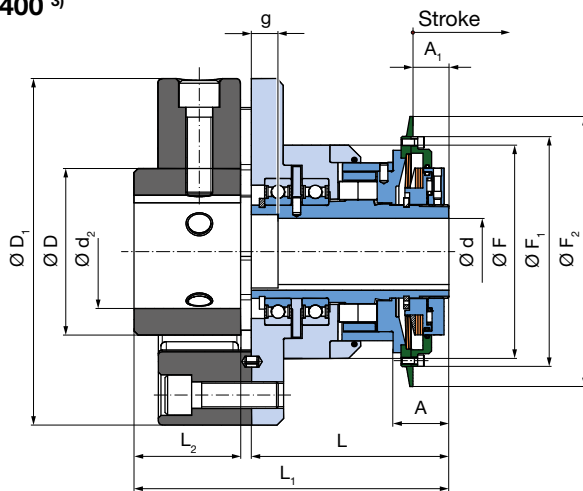
Example: Order number 4 / 4103.50400 / 30 / 60 / 450 Nm

1) See Technical data, limit torque for overload M_G, other torques on request

EAS®-reverse
Type 4100. _0400 ²⁾



EAS®-reverse
Type 4103. _0400 ³⁾



Technical Data			Size			
			3	4	5	6
Limit torques for overload ¹⁾	Type 410_4_400	M_G [Nm]	75 - 150	125 - 250	250 - 500	500 - 1000
	Type 410_5_400	M_G [Nm]	150 - 300	250 - 500	500 - 1000	1000 - 2000
	Type 410_6_400	M_G [Nm]	300 - 600	500 - 1000	1000 - 2000	2000 - 4000
	Type 410_7_400	M_G [Nm]	375 - 750	625 - 1250	1250 - 2500	3000 - 6000
Max. speed	n_{max}	[rpm]	3600	2000	2000	2000
Control element stroke on overload		[mm]	3	4	5	6

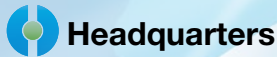
Dimensions [mm]	Size			
	3	4	5	6
A	36	42	49	70
A ₁	24	27	31	49
a	3	4	4	6
a ₁	18	20	23	24
D	100	125	145	170
D ₁	200	260	300	370
d ₁	46 ^{+0.2}	56 ^{+0.2}	82 ^{+0.2}	110 ^{+0.2}
E	152	170	222	280
e	95	122	155	210
F	145	160	215	270
F ₁	150	173	212	245
F ₂	182	203	279	305
g	16	20	20	25
L	128	148	170	218
L ₁	202	236	272	355
L ₂	66	80	94	125

Dimensions [mm]	Size			
	3	4	5	6
m	114	144	184	252
s	7xM10	8xM12	8xM16	14xM16

Bores [mm]		Size			
		3	4	5	6
d ^{H7}	d _{min}	17	20	30	40
	d _{max}	40	50	75	100
d ₂ ^{H7}	d _{2 min}	20	30	40	50
	d _{2 max}	65	85	105	120

2) The position of the keyway to the mounting bore "s" in the pressure flange is not defined (defined position possible on request)

3) The position of the keyway to each other is not defined (defined position possible on request)



Chr. Mayr GmbH + Co. KG
Eichenstrasse 1, D-87665 Mauerstetten
Tel.: +49 83 41/8 04-0, Fax: +49 83 41/80 44 21
www.mayr.com, E-Mail: info@mayr.com



Service Germany

Baden-Württemberg

Esslinger Straße 7
 70771 Leinfelden-Echterdingen
 Tel.: 07 11/78 26 26 40
 Fax: 07 11/78 26 26 39

Bavaria

Industriestraße 51
 82194 Gröbenzell
 Tel.: 0 81 42/50 19 80-7

Chemnitz

Bornaer Straße 205
 09114 Chemnitz
 Tel.: 03 71/4 74 18 96
 Fax: 03 71/4 74 18 95

Franken

Unterer Markt 9
 91217 Hersbruck
 Tel.: 0 91 51/81 48 64
 Fax: 0 91 51/81 62 45

Kamen

Herbert-Wehner-Straße 2
 59174 Kamen
 Tel.: 0 23 07/24 26 79
 Fax: 0 23 07/24 26 74

North

Schiefer Brink 8
 32699 Extertal
 Tel.: 0 57 54/9 20 77
 Fax: 0 57 54/9 20 78

Rhine-Main

Kreuzgrundweg 3a
 36100 Petersberg
 Tel.: 06 61/96 21 02 15

Austria

Pummerinplatz 1, TIZ I, A27
 4490 St. Florian, Austria
 Tel.: 0 72 24/2 20 81-12
 Fax: 0 72 24/2 20 81 89

Branch office

China

Mayr Zhangjiagang
 Power Transmission Co., Ltd.
 Fuxin Road No.7, Yangshe Town
 215637 Zhangjiagang
 Tel.: 05 12/58 91-75 67
 Fax: 05 12/58 91-75 66
 info@mayr-ptc.cn

Great Britain

Mayr Transmissions Ltd.
 Valley Road, Business Park
 Keighley, BD21 4LZ
 West Yorkshire
 Tel.: 0 15 35/66 39 00
 Fax: 0 15 35/66 32 61
 sales@mayr.co.uk

France

Mayr France S.A.S.
 Z.A.L. du Minopole
 Rue Nungesser et Coli
 62160 Bully-Les-Mines
 Tel.: 03.21.72.91.91
 Fax: 03.21.29.71.77
 contact@mayr.fr

Italy

Mayr Italia S.r.l.
 Viale Veneto, 3
 35020 Saonara (PD)
 Tel.: 049/879 10 20
 Fax: 049/879 10 22
 info@mayr-italia.it

Singapore

Mayr Transmission (S) PTE Ltd.
 No. 8 Boon Lay Way Unit 03-06,
 TradeHub 21
 Singapore 609964
 Tel.: 00 65/65 60 12 30
 Fax: 00 65/65 60 10 00
 info@mayr.com.sg

Switzerland

Mayr Kupplungen AG
 Tobeläckerstraße 11
 8212 Neuhausen am Rheinfall
 Tel.: 0 52/6 74 08 70
 Fax: 0 52/6 74 08 75
 info@mayr.ch

USA

Mayr Corporation
 10 Industrial Avenue
 Mahwah
 NJ 07430
 Tel.: 2 01/4 45-72 10
 Fax: 2 01/4 45-80 19
 info@mayrcorp.com

Turkey

Representative Office Turkey
 Kucukbakkalkoy Mah.
 Brandium Residence R2
 Blok D:254
 34750 Atasehir - Istanbul, Turkey
 Tel.: 02 16/2 32 20 44
 Fax: 02 16/5 04 41 72
 info@mayr.com.tr

Representatives

Australia

Drive Systems Pty Ltd.
 8/32 Melverton Drive
 Hallam, Victoria 3803
 Australien
 Tel.: 0 3/97 96 48 00
 info@drivesystems.com.au

India

National Engineering
 Company (NENCO)
 J-225, M.I.D.C.
 Bhosari Pune 411026
 Tel.: 0 20/27 13 00 29
 Fax: 0 20/27 13 02 29
 nenco@nenco.org

Japan

MATSUI Corporation
 2-4-7 Azabudai
 Minato-ku
 Tokyo 106-8641
 Tel.: 03/35 86-41 41
 Fax: 03/32 24 24 10
 info@matsui-corp.co.jp

Netherlands

Groneman BV
 Amarilstraat 11
 7554 TV Hengelo OV
 Tel.: 074/2 55 11 40
 Fax: 074/2 55 11 09
 aandrijftechnik@groneman.nl

Poland

Wamex Sp. z o.o.
 ul. Pozaryskiego, 28
 04-703 Warszawa
 Tel.: 0 22/6 15 90 80
 Fax: 0 22/8 15 61 80
 wamex@wamex.com.pl

South Korea

Mayr Korea Co. Ltd.
 15, Yeondeok-ro 9beon-gil
 Seongsan-gu
 51571 Changwon-si
 Gyeongsangnam-do. Korea
 Tel.: 0 55/2 62-40 24
 Fax: 0 55/2 62-40 25
 info@mayrkorea.com

Taiwan

German Tech Auto Co., Ltd.
 No. 28, Fenggong Zhong Road,
 Shengang Dist.,
 Taichung City 429, Taiwan R.O.C.
 Tel.: 04/25 15 05 66
 Fax: 04/25 15 24 13
 abby@zfgta.com.tw

Czech Republic

BMC - TECH s.r.o.
 Hviezdoslavova 29 b
 62700 Brno
 Tel.: 05/45 22 60 47
 Fax: 05/45 22 60 48
 info@bmc-tech.cz

More representatives:

Belgium, Brazil, Canada, Colombia, Croatia, Denmark, Finland, Greece, Hongkong, Hungary, Indonesia, Israel, Luxembourg, Malaysia, Mexico, New Zealand, Norway, Philippines, Portugal, Romania, Russia, Slovakia, Slovenia, South Africa, Spain, Sweden, Thailand

You can find the complete address for the representative responsible for your area under www.mayr.com in the internet.