

2015 PRODUCT LINE



MOLINE BEARING CO.

800.242.4633

MOLINE PRODUCT LINE



2-BOLT PILLOW BLOCK



4-BOLT PILLOW BLOCK



4-BOLT FLANGE



PILOTED FLANGE

TYPE E TAPERED ROLLER BEARINGS

2-Bolt Pillow Block: shaft sizes from $1\frac{3}{16}$ – $3\frac{1}{2}$, 35mm – 90mm

4-Bolt Pillow Block: shaft sizes from $2\frac{1}{4}$ – 7, 60mm – 180mm

4-Bolt Flange: shaft sizes from $1\frac{3}{16}$ – $4\frac{1}{2}$, 35mm – 115mm

Piloted Flange: shaft sizes from $1\frac{1}{2}$ – 5, 40mm – 125mm

Wide Slot Take-Up: shaft sizes from $1\frac{3}{4}$ – $3\frac{1}{2}$, 45mm – 90mm

TIMKEN insert inside

M2000 SPHERICAL ROLLER BEARINGS

2-Bolt Pillow Block: shaft sizes from $1\frac{3}{16}$ – 4, 40mm – 100mm

4-Bolt Pillow Block: shaft sizes from $2\frac{7}{16}$ – 5, 60mm – 130mm

4-Bolt Flange: shaft sizes from $1\frac{3}{16}$ – 4, 40mm – 100mm

Piloted Flange: shaft sizes from $1\frac{3}{16}$ – 5, 40mm – 130mm

Wide Slot Take-Up: shaft sizes from $1\frac{15}{16}$ – $3\frac{1}{2}$, 50mm – 90mm

TIMKEN insert inside

SKF insert inside

M3000 EVEN-LOCK™ SPHERICAL ROLLER BEARINGS

2-Bolt Pillow Block: shaft sizes from $1\frac{7}{16}$ – 4

4-Bolt Pillow Block: shaft sizes from $2\frac{7}{16}$ – 4

4-Bolt Flange: shaft sizes from $1\frac{7}{16}$ – 4

Piloted Flange: shaft sizes from $1\frac{7}{16}$ – 4

Wide Slot Take-Up: shaft sizes from $1\frac{15}{16}$ – $3\frac{1}{2}$

SKF insert inside

ME2000 SPHERICAL-E ROLLER BEARINGS

2-Bolt Pillow Block: shaft sizes from $1\frac{7}{16}$ – $3\frac{1}{2}$, 40mm – 90mm

4-Bolt Flange: shaft sizes from $1\frac{7}{16}$ – 4, 40mm – 100mm

Piloted Flange: shaft sizes from $1\frac{11}{16}$ – 5, 40mm – 130mm

TIMKEN insert inside

SKF insert inside

MOLINE PRODUCT LINE



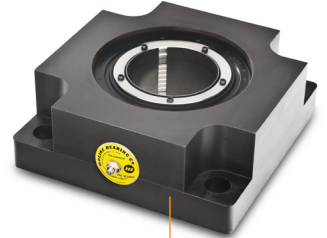
WIDE SLOT TAKE-UP



NORMAL & MEDIUM DUTY
BALL BEARINGS



END CAPS & COVERS



CUSTOM HOUSINGS

ME3000 EVEN-LOCK™ SPHERICAL-E ROLLER BEARINGS

2-Bolt Pillow Block: shaft sizes from $1\frac{7}{16}$ – $3\frac{1}{2}$

4-Bolt Flange: shaft sizes from $1\frac{7}{16}$ – 4

Piloted Flange: shaft sizes from $1\frac{1}{16}$ – 4

SKF: insert inside

NORMAL DUTY MOUNTED BALL BEARINGS

Set Screw Locking and Eccentric Locking Collars available in Complete Units, Inserts and Housings, 2-Bolt Pillow Block, 2-Bolt Flange, 4-Bolt Flange, Piloted Flange, Wide Slot Take-Up
shaft sizes from $\frac{1}{2}$ – $3\frac{7}{16}$

MEDIUM DUTY MOUNTED BALL BEARINGS

Set Screw Locking Collars available in Complete Units, 2-Bolt Pillow Block, 2-Bolt Flange, 4-Bolt Flange
shaft sizes from 1 – 4

END CAPS AND COVERS

Open End Caps, Closed End Caps and Bearing Covers

Available in standard impact resistant black ABS and PETG plastic, other colors and materials also available upon request. Seals, gaskets and grease fitting options offered.

CUSTOM HOUSINGS AND COATINGS

Custom Housings

Moline Engineers are available to custom design or modify existing housings to resolve any design or operating issues you may encounter. Steel, Stainless Steel, Specialty Metals, Seals and Lubrications are available as well. No minimum quantities required, please call the factory for more information.

Custom Coatings

Stainless Steel powder coating, Anti-microbial epoxy, Plascoat, Nickel and Teflon coatings available. PMS and RAL color matched powder coated colors offered.

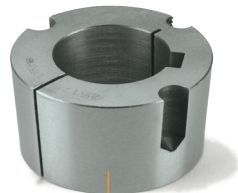


MOLINE BEARING CO.

MOLINE PRODUCT LINE



SPECIALTY COATINGS



BUSHINGS



WELD-ON HUBS



SHAFT COLLARS

QD, TAPERED AND D BUSHINGS

QD Bushings

Available in styles JA, SH, SDS, SD, SK, SF, E, F, J, M, N and P in a complete range of bore sizes

Tapered Bushings

Available in styles 1008, 1108, 1210, 1215, 1310, 1610, 1615, 2012, 2517, 2525, 3020, 3030, 3535, 4040, 4545 and 5050 in a complete range of bore sizes

D Bushings

in a complete range of bore sizes

WELD-ON HUBS

Tapered Weld-On Hubs

Available in Type S from 1610 through 3535, and Type W from 1210 through 5050

QD Weld-On Hubs

Available in styles JA-A, SH-A, SDS-A, SK-A, SF-A, E-A, F-A, J-A, M-A, N-A and P-A

SHAFT COLLARS

Zinc-Plated Solid Collars

Available in sizes from $\frac{1}{8}$ – $4\frac{15}{16}$

Stainless Steel Solid Collars

Available in sizes from $\frac{1}{8}$ – 4

Black Oxide Single and Double Split Collars

Available in sizes from $\frac{1}{4}$ – $4\frac{7}{16}$

Stainless Steel Single and Double Split Collars

Available in sizes from $\frac{1}{4}$ – $3\frac{1}{2}$



MOLINE BEARING CO.

Post Office Box 99, Batavia, Illinois 60510, USA

630.584.4600 800.242.4633 630.584.1999 fax www.molinebearing.com