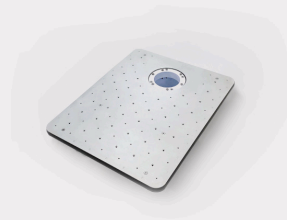
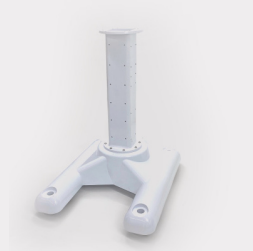


ACCESSORY BROCHURE

(Without Pricing)

Rev: 08/1/23



Products and prices are subject to change without notice

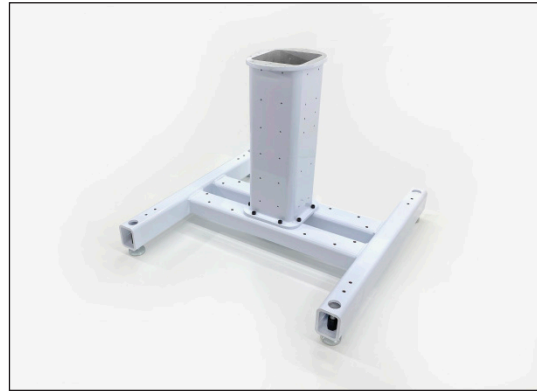
Productive Robotics, LLC. 1035 Cindy Lane Carpinteria, CA 93013 United States

voice: 805.244.9300 **web:** www.productiverobotics.com **email:** info@productiverobotics.com



RS-1

Rolling Robot Stand for OB7 and OB7 Stretch models.



RS-2

Robot Stand (not rolling) for OB7 Max series robot.



PEDESTAL 1

Pedestal only for floor mounting OB7 and OB7 Stretch models.



PEDESTAL 2

Pedestal only for floor mounting OB7 Max models.



AT-1

Accessory and assembly table for OB7 and OB7 Stretch models. 28" x 39" Requires RS-1 or pedestal 1 for use.



AT-2

Accessory and assembly table for OB7 Max models. 48"x48" Requires RS-2 or Pedestal 2 for use.

Products and prices are subject to change without notice

Productive Robotics, LLC. 1035 Cindy Lane Carpinteria, CA 93013 United States

voice: 805.244.9300 **web:** www.productiverobotics.com **email:** info@productiverobotics.com



OB VISION

Automatic Robot Vision for all models of OB7 Robots



DUAL GRIPPER ADAPTER KIT

For installing two grippers on OB7. Compatible with all OB7 models. (Grippers not included.)



PG-2

Productive Robotics Parallel Gripper model 2: 90mm opening travel.



IO-2

OB7 interface module: 8 digital or analog inputs (fully isolated), 8 outputs (PNP or NPN isolated); M12 connectors, 2 dry contact SPDT relay outputs (screw terminals).



ROBOT JACKET

Body Cover manufactured from a laminated polyester material. This provides for a water-resistant level of protection. This one piece “sock” design installs one-way by sliding over the robot. Zig-Zag elastic at each end conforms to the robot to hold cover in place.



PG2 FINGER EXTENSIONS

Extends PG2 gripper fingers to grip items from 95mm - 180mm.

Products and prices are subject to change without notice

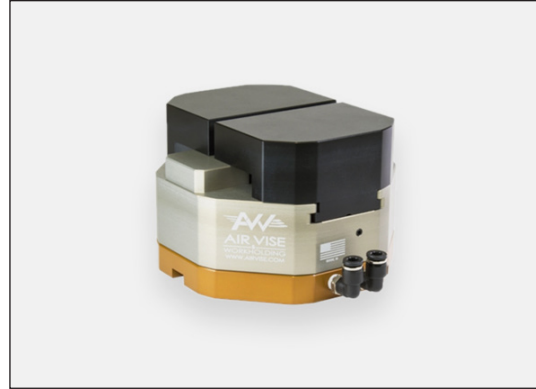
Productive Robotics, LLC. 1035 Cindy Lane Carpinteria, CA 93013 United States

voice: 805.244.9300 **web:** www.productiverobotics.com **email:** info@productiverobotics.com



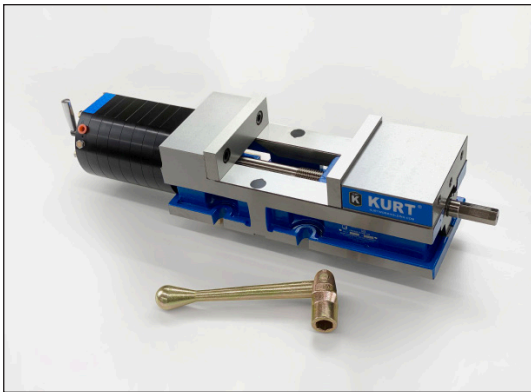
VISE-002

Airwise model pneumatic milling vise 4" jaws. 6" accessory jaws available)



VISE-001

Airwise Model pneumatic milling vise for rotary table use 4" jaws. 6" accessory jaws available)



VISE-006

Kurt Pneumatic milling vise. 6" jaws



PNEU-1

Pneumatic interface module. 0-100PSI, built in pressure regulator. Requires I/O-2



CHIP FAN-004

Chip clearance fan for milling machines. Requires 3/4" tool holder



AIR BLOW OFF KIT

Air nozzle and adapter for all OB7 model robots. Requires Pneu1 and I/O-2

Products and prices are subject to change without notice

Productive Robotics, LLC. 1035 Cindy Lane Carpinteria, CA 93013 United States

voice: 805.244.9300 **web:** www.productiverobotics.com **email:** info@productiverobotics.com



REMOTE RELAY 1 CH

Fully isolated remote interface relay.
Requires I/O-2



REMOTE RELAY 2CH

Fully isolated dual remote interface relay.
Requires I/O-2



LIDAR 1

Laser Scanner. For slowing/stopping
robot when a person enters the work area.
Requires I/O-1 or I/O-2



CABLES-LONG OB7

Long Cable set: 5 meter cable set for locating
OB7 up to 5 meters from robot control
computer. Compatible with all models of OB7

Products and prices are subject to change without notice

Productive Robotics, LLC. 1035 Cindy Lane Carpinteria, CA 93013 United States

voice: 805.244.9300 **web:** www.productiverobotics.com **email:** info@productiverobotics.com



CBL-507: Y CABLE

for separating the two inputs or outputs on an M12 connector on I/O-2.



PG2 FINGER SET

For Productive Robotics Parallel Gripper.



PG2 THREE FINGER ADAPTER

Modifies the PG2 standard gripper to allow centered pickup of round parts.

Products and prices are subject to change without notice

Productive Robotics, LLC. 1035 Cindy Lane Carpinteria, CA 93013 United States

voice: 805.244.9300 **web:** www.productiverobotics.com **email:** info@productiverobotics.com