

RexTM

PRODUCT
CATALOG



**REXTM EXTREME
PERFORMANCE LEAF
CHAIN CATALOG**
METRIC



RegalRexnordTM

Rex™ Extreme Performance Leaf Chain for the Most Demanding Applications





Introduction to Rex™ Extreme Performance Portfolio

Increase market demands for extreme performance chain driven Regal Rexnord to develop a product portfolio suitable for heavy loading capacities, high fatigue strength and higher corrosion resistance:

- RexAthletic™ Leaf Chain page 4
- RexHiPro™ Leaf Chain page 7
- RexWM™ Leaf Chain page 10
- RexProX™ Leaf Chain page 13
- RexOil page 17
- Recommended Connecting Dimensions and End Links page 18
- Sheave page 22

Regal Rexnord Extreme Performance Leaf Chain will deliver:

- Improved wear resistance
- Increased chain joint loading capability
- Increased corrosion protection
- Extended service life time
- Improved dynamic and static safety





RexAthletic™ Leaf Chain

Extreme Performance

RexAthletic low-maintenance Leaf Chain is ideal in situations with limited maintenance and lubrication possibilities. The shot-peened chain components and the special long-life lubricant improve the wear and fatigue resistance of the chain.

Long wear lifetime

The special long-life lubricant optimized by Regal Rexnord extends the lubrication intervals significantly. This results in less downtime and a longer service life of the chain.

High tensile strength

With its high tensile strength the RexAthletic Leaf Chain is ideal for heavy loading applications in difficult conditions and in closed systems.

Good corrosion protection

Even with minimum lubrication and under heavy loads the RexAthletic Leaf Chain has a high wear resistance and a long wear life.

Features

- Very good tribological characteristics
- Improve protection against stiff joints / links
- Dimensions in accordance with ISO and ANSI
- RexAthletic version available on request for leaf chains in the AL Light, BL Heavy Series American Standard and F Series European Standard in accordance with ISO 4347

Traceability with silver label

The silver colored label outer plates have a batch number for full and consistent traceability.

CE marking

RexAthletic Leaf Chains have the CE marking because they fulfill the requirements of Machinery Directive 2006/42/EC.

Advantages

- Reduced need for maintenance and longer lubrication intervals
- High wear resistance even with minimum lubrication
- Long service life under heavy loads
- Batch number on silver colored plate for traceability
- Eco-friendly: reduced lubricant requirement
- Compatible replacement for all standard chains

Lubrication

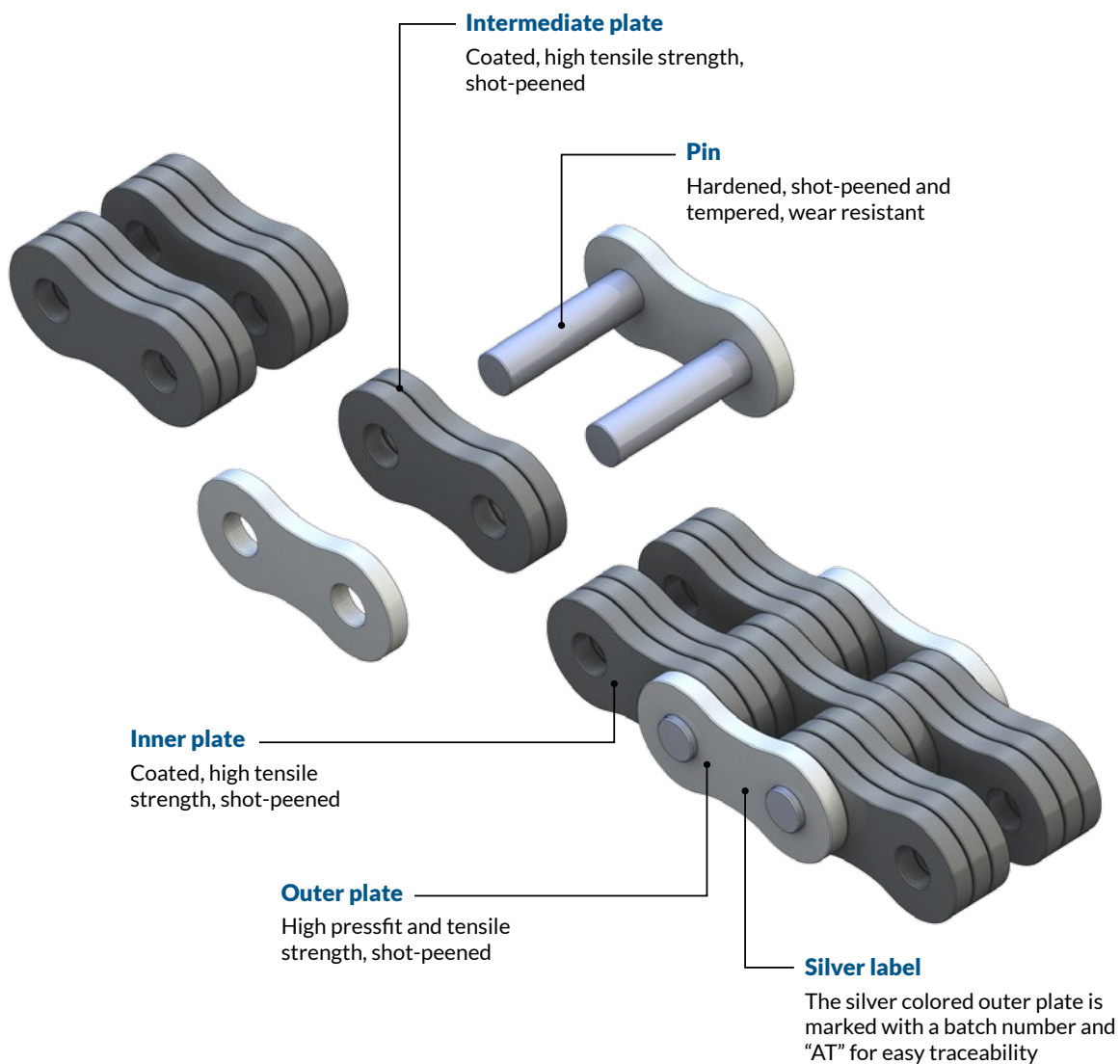
- Special long-life lubricant optimized by Regal Rexnord
- Operating temperature from -15° C to +75° C
- No dripping of lubricant
- Water-resistant

Applications:

- Material handling
- Forklift trucks
- Telescopic lift systems
- Machine tools

RexAthletic™ Leaf Chain

Extreme Performance



Loading capacity

- Special calibrated plate holes
- Shot-peened chain components
- High pre-loading



Improved wear resistance

- Significantly longer relubrication intervals
- Special long-life lubricant optimized by Regal Rexnord
- Longer service life time
- High operating reliability



Eco-friendly

- No heavy metals; Teflon- and silicone-free
- Environmental management system conforms to DIN EN ISO 14001
- Free of chromium VI

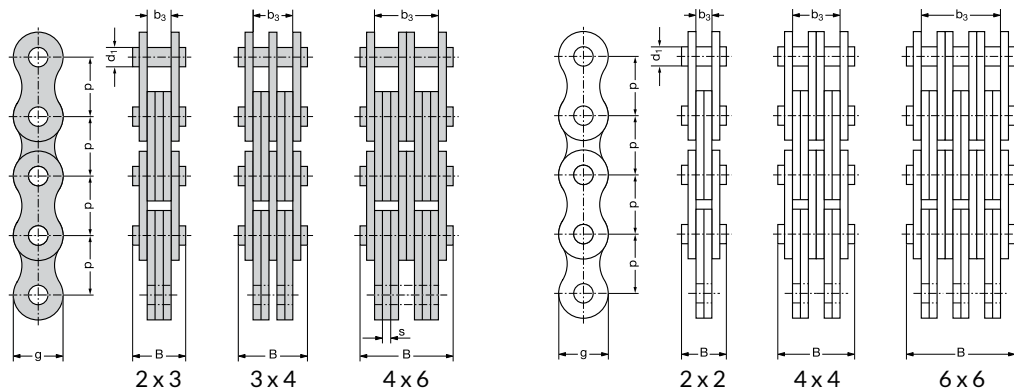
CE This product meets the requirements of Machine Directive 2006/42/EC

RexAthletic™ Leaf Chain is available in F Series European Standard, BL Heavy and AL Light Series American Standard. In the following table only the BL Heavy Series is shown. For F and AL Series, please contact Regal Rexnord.

BL Heavy Series American Standard – RexAthletic Leaf Chain ISO 4347

Chain No.*	ISO Chain No.	Pitch		Lacing	Pin diameter	Plate depth	Plate thickness	Length over 100 pitches	Pin length	Width between outer plates	Bearing area	Required minimum tensile strength ISO 4347	Rex™ minimum tensile strength	Rex fatigue strength	Weight													
		p																										
		Inch	mm																									
					d_1 max.	g	s	100 p	B max.	b_3 min.	A	F_U	F_B	F_D	q													
					mm	mm	mm	mm	mm	mm	cm ²	N	N	N	kg/m													
BL 523	LH 1023			2 x 3					15.0	7.4	0.43	33 400	40 000	10 500	1.1													
BL 534	LH 1034			3 x 4					20.0	12.3	0.57	48 900	60 000	11 500	1.5													
BL 544	LH 1044	0.625	15.875	4 x 4	5.94	14.6	2.4	1596	22.5	14.7	0.57	66 700	80 000	12 000	1.8													
BL 546	LH 1046			4 x 6																								
BL 566	LH 1066			6 x 6																								
BL 588	LH 1088			8 x 8																								
BL 623	LH 1223			2 x 3																								
BL 634	LH 1234			3 x 4					20.0	9.6	0.74	48 900	62 000	16 300	1.8													
BL 644	LH 1244	0.75	19.05	4 x 4	7.92	17.9	3.1	1905	26.4	16.0	0.98	75 600	93 000	17 400	2.5													
BL 646	LH 1246			4 x 6																								
BL 666	LH 1266			6 x 6																								
BL 823	LH 1623			2 x 3																								
BL 834	LH 1634			3 x 4					24.8	12.3	1.14	84 500	110 000	30 000	3.0													
BL 844	LH 1644	1.00	25.4	4 x 4	9.53	23.6	4.0	2540	33.1	20.5	1.52	129 000	165 000	32 000	4.2													
BL 846	LH 1646			4 x 6																								
BL 866	LH 1666			6 x 6																								
BL 888	LH 1688			8 x 8																								
BL 1023	LH 2023			2 x 3																								
BL 1034	LH 2034			3 x 4					28.9	14.4	1.56	115 600	164 000	47 500	4.4													
BL 1044	LH 2044	1.25	31.75	4 x 4	11.10	29.2	4.7	3179	38.8	24.1	2.09	182 400	246 000	50 000	6.2													
BL 1046	LH 2046			4 x 6																								
BL 1066	LH 2066			6 x 6																								
BL 1088	LH 2088			8 x 8																								
BL 1223	LH 2423			2 x 3																								
BL 1234	LH 2434			3 x 4					33.6	16.8	2.1	151 200	200 000	64 000	6.0													
BL 1244	LH 2444	1.50	38.1	3 x 4	12.70	34.4	5.5	3810	45.5	28.0	2.8	224 600	300 000	68 000	8.3													
BL 1246	LH 2446			4 x 6																								
BL 1266	LH 2466			6 x 6																								
BL 1288	LH 2488			8 x 8																								
BL 1423	LH 2823			2 x 3																								
BL 1434	LH 2834			3 x 4					45.5	28.0	2.8	224 600	300 000	68 000	8.3													
BL 1444	LH 2844	1.75	44.45	4 x 4	14.27	40.8	6.3	4445	51.2	33.6	2.8	302 400	400 000	72 000	9.5													
BL 1446	LH 2846			4 x 6																								
BL 1466	LH 2866			6 x 6																								
BL 1488	LH 2888			8 x 8																								
BL 1623	LH 3223			2 x 3																								
BL 1634	LH 3234			3 x 4					62.7	44.8	4.2	302 400	400 000	82 000	11.8													
BL 1644	LH 3244	2.00	50.8	4 x 4	17.46	47.9	7.0	5080	74.5	56.0*	4.2	453 600	600 000	90 000	14.1													
BL 1646	LH 3246			4 x 6																								
BL 1666	LH 3266			6 x 6																								
BL 1688	LH 3288			8 x 8																								
BL 1688	LH 3288																8 x 8					97.8	78.4*	5.4	604 800	800 000	98 000	18.8
BL 1423	LH 2823	2 x 3							38.2	19.2	2.7	191 300	250 000		8.3													
BL 1434	LH 2834			3 x 4					51.7	32.0	3.6	315 800	375 000		11.6													
BL 1444	LH 2844	1.75	44.45	4 x 4	14.27	40.8	6.3	4445	58.2	38.4	3.6	382 600	500 000		13.2													
BL 1446	LH 2846			4 x 6																								
BL 1466	LH 2866			6 x 6																								
BL 1488	LH 2888			8 x 8																								
BL 1623	LH 3223			2 x 3																		85.0	64.0*	5.4	578 000	750 000		19.7
BL 1634	LH 3234			3 x 4					111.7	89.6*	7.2	765 200	1 000 000		25.9													
BL 1644	LH 3244	2.00	50.8	4 x 4	17.46	47.9	7.0	5080	42.1	21.3*	3.67	289 100	360 000		11.0													
BL 1646	LH 3246			4 x 6																		57.0	35.5*	4.89	440 400	540 000		15.4
BL 1666	LH 3266			6 x 6																		63.8	42.6*	5.0	578 200	720 000		17.5
BL 1688	LH 3288			8 x 8																		78.9	56.8*	7.33	578 200	720 000		21.8
BL 1688	LH 3288																8 x 8					95.0	73.7*	7.33	867 400	1 080 000		26.2
BL 1688	LH 3288								125.6	103.5*	9.78	1 156 400	1 440 000		34.9													

* Please contact Regal Rexnord regarding precision of fit with ISO or ANSI anchors.





RexHiPro™ Leaf Chain

Extreme Performance

RexHiPro Leaf Chain has an excellent corrosion resistance and a very high, dynamic and long-term loading capacity. This chain can be used with water and aggressive liquids and still delivers an extremely long and continuous service.

Applications:

- Harbors & docks
- Industrial lifting equipment
- Outside application
- Food & beverage
- Automotive

Excellent corrosion resistance

All the single chain components have a special anti-corrosion coating which makes the resistance intact for over 600 hours (salt spray test conform to ISO 9227). The RexHiPro Leaf Chain is resistant to liquids from the automotive industry under VDA 621-412.

High dynamic load

Compared to other coated chains the RexHiPro Leaf Chain has a higher dynamic and static loading capacity. The RexHiPro anti-corrosion coating does not cause reduction of ultimate tensile strength.

Traceability with silver label

The silver colored label outer plates have a batch for full and consistent traceability.

CE marking

RexHiPro Leaf Chains have the CE marking because they fulfill the requirements of Machinery Directive 2006/42/EC.

Features

- Anti-corrosion coating for all chain components
- Tensile strength and fatigue strength as for RexPro™ Leaf Chain
- Dimensions in accordance with ISO and ANSI standards
- No process-related hydrogen embrittlement
- Does not contain chromium VI: conforms to Directive 2011/65/EU (RoHS) and Directive 2000/53/EC

Advantages

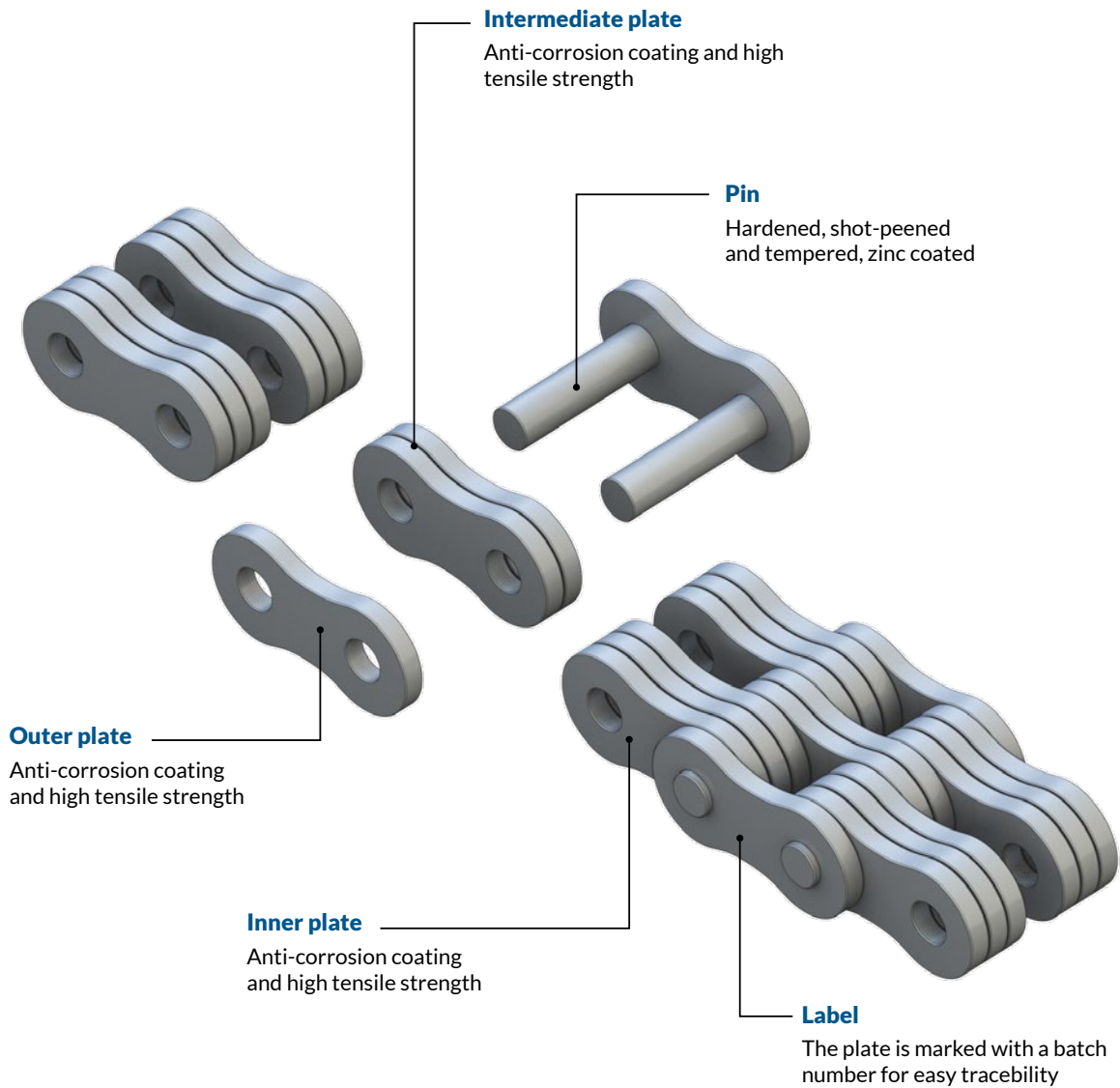
- Excellent resistance to corrosion and wear
- Corrosion resistance for more than 600 hours (salt spray test in accordance with ISO 9227)
- Resistant against liquids from the automotive industry in accordance with VDA 621-412

Lubrication

- Improved protection with RexPro Lubrication
- RexPro Lubrication with NSF H2 certification, RoHS:2011 compliant for electronics industry
- Operating temperature: - 30° C to + 130° C (special lubrication can expand range to - 40° C to + 250° C)
- Very good surface adhesion; remains drip-resistant even at high temperatures
- Lubrication without heavy metals, Teflon or silicone
- Other special lubricants are available (for example, lubricant with NSF H1 certification)

RexHiPro™ Leaf Chain

Extreme Performance



Loading capacity and wear resistance

- High loading capacity, dynamic and static loads
- Service intervals as for RexPro Leaf Chains
- Long service life




Damp corrosion resistance

- Outstanding corrosion resistance
- Suitable for high humidity and outside applications



Eco-friendly

- NSF H2 certification
- RoHS:2011 conformity
- Free of chromium VI

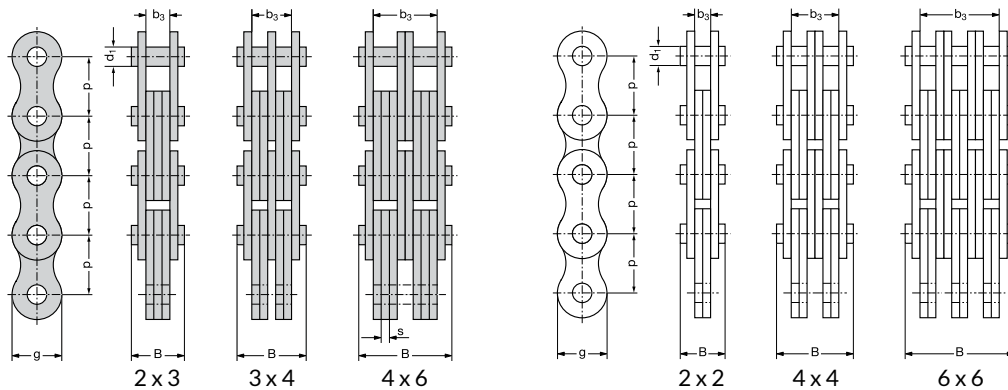
 This product meets the requirements of Machine Directive 2006/42/EC

RexHiPro™ Leaf Chain is available in F Series European Standard, BL Heavy and AL Light Series American Standard. In the following table only the BL Heavy Series is shown. For F and AL Series, please contact Regal Rexnord.

BL Heavy Series American Standard – RexHiPro Leaf Chain ISO 4347

Chain No.*	ISO Chain No.	Pitch		Lacing	Pin diameter	Plate depth	Plate thickness	Length over 100 pitches	Pin length	Width between outer plates	Bearing area	Required minimum tensile strength ISO 4347	Rex™ minimum tensile strength	Rex fatigue strength	Weight
		p													
		Inch	mm												
					d_1 max.	g	s	100 p	B max.	b_3 min.	A	F_U	F_B	F_D	q
					mm	mm	mm	mm	mm	mm	cm ²	N	N	N	kg/m
BL 523	LH 1023			2 x 3					15.0	7.4	0.43	33 400	40 000	10 500	1.1
BL 534	LH 1034			3 x 4					20.0	12.3	0.57	48 900	60 000	11 500	1.5
BL 544	LH 1044	0.625	15.875	4 x 4	5.94	14.6	2.4	1596	22.5	14.7	0.57	66 700	80 000	12 000	1.8
BL 546	LH 1046			4 x 6					27.4	19.6	0.86	66 700	80 000	14 000	2.2
BL 566	LH 1066			6 x 6					32.3	24.5	0.86	100 100	120 000	15 200	2.6
BL 623	LH 1223			2 x 3					20.0	9.6	0.74	48 900	62 000	16 300	1.8
BL 634	LH 1234			3 x 4					26.4	16.0	0.98	75 600	93 000	17 400	2.5
BL 644	LH 1244	0.75	19.05	4 x 4	7.92	17.9	3.1	1905	29.5	19.2	0.98	97 900	124 000	19 000	2.9
BL 646	LH 1246			4 x 6					35.9	25.6	1.47	97 900	124 000	21 500	3.6
BL 666	LH 1266			6 x 6					42.5	32.0*	1.47	146 800	186 000	24 500	4.3
BL 823	LH 1623			2 x 3					24.8	12.3	1.14	84 500	110 000	30 000	3.0
BL 834	LH 1634			3 x 4					33.1	20.5	1.52	129 000	165 000	32 000	4.2
BL 844	LH 1644	1.00	25.4	4 x 4	9.53	23.6	4.0	2540	37.3	24.7	1.52	169 000	220 000	33 500	4.8
BL 846	LH 1646			4 x 6					45.7	33.0	2.29	169 000	220 000	38 500	6.0
BL 866	LH 1666			6 x 6					54.1	41.3	2.29	253 600	330 000	41 850	7.2
BL 1023	LH 2023			2 x 3					28.9	14.4	1.56	115 600	164 000	47 500	4.4
BL 1034	LH 2034			3 x 4					38.8	24.1	2.09	182 400	246 000	50 000	6.2
BL 1044	LH 2044	1.25	31.75	4 x 4	11.10	29.2	4.7	3179	43.7	29.0	2.09	231 200	328 000	55 000	7.0
BL 1046	LH 2046			4 x 6					53.5	38.4*	3.12	231 200	328 000	62 000	8.7
BL 1066	LH 2066			6 x 6					63.5	48.6*	3.12	347 000	492 000	69 000	10.5
BL 1223	LH 2423			2 x 3					33.6	16.8	2.1	151 200	200 000	64 000	6.0
BL 1234	LH 2434			3 x 4					45.5	28.0	2.8	224 600	300 000	68 000	8.3
BL 1244	LH 2444	1.50	38.1	3 x 4	12.70	34.4	5.5	3810	51.2	33.6	2.8	302 400	400 000	72 000	9.5
BL 1246	LH 2446			4 x 6					62.7	44.8	4.2	302 400	400 000	82 000	11.8
BL 1266	LH 2466			6 x 6					74.5	56.0*	4.2	453 600	600 000	90 000	14.1
BL 1423	LH 2823			2 x 3					38.2	19.2	2.7	191 300	250 000		8.3
BL 1434	LH 2834			3 x 4					51.7	32.0	3.6	315 800	375 000		11.6
BL 1444	LH 2844	1.75	44.45	4 x 4	14.27	40.8	6.3	4445	58.2	38.4	3.6	382 600	500 000		13.2
BL 1446	LH 2846			4 x 6					71.5	51.2	5.4	382 600	500 000		16.4
BL 1466	LH 2866			6 x 6					85.0	64.0*	5.4	578 000	750 000		19.7
BL 1623	LH 3223			2 x 3					42.1	21.3*	3.67	289 100	360 000		11.0
BL 1634	LH 3234			3 x 4					57.0	35.5*	4.89	440 400	540 000		15.4
BL 1644	LH 3244	2.00	50.8	4 x 4	17.46	47.9	7.0	5080	63.8	42.6*	5.0	578 200	720 000		17.5
BL 1646	LH 3246			4 x 6					78.9	56.8*	7.33	578 200	720 000		21.8
BL 1666	LH 3266			6 x 6					95.0	73.7*	7.33	867 400	1 080 000		26.2

* Please contact Regal Rexnord regarding precision of fit with ISO or ANSI anchors.





RexWM™ Leaf Chain

Extreme Performance

The Rex™ WM treatment is based on decades of experience. In combination with state of the art technologies we supply an outstanding product for all hoisting applications. Primary used in tooling machines (in German: 'Werkzeug Maschine') carrying the counter weights. The technology behind is still the first choice whenever highest reliability, smooth running and extreme long service lifetime is requested.

Best results under permanent loading

In tooling machines and matchable applications is the highest challenge for a chain to withstand the special requirements of permanent loading and permanent movement without stress relief. The solution is the Rex WM treatment for large pitch leaf chains. The special WM treatment enables a quiet and smooth running without chatter marks.

Machine tool RexWM version

The special bonderizing provides a maximum pressure absorptive power and at the same time a high level of oil absorption capacity. Under pressure, the synthetic solid lubricants and the bonderized surface are activated from the first chain loading and assure an excellent wear resistance. The result is a higher allowable bearing area pressure and much longer service lifetime with less or even no relubrication.

Applications:

- Machine tools
- Material handling
- Special purpose machinery
- Drilling machines

Advantages

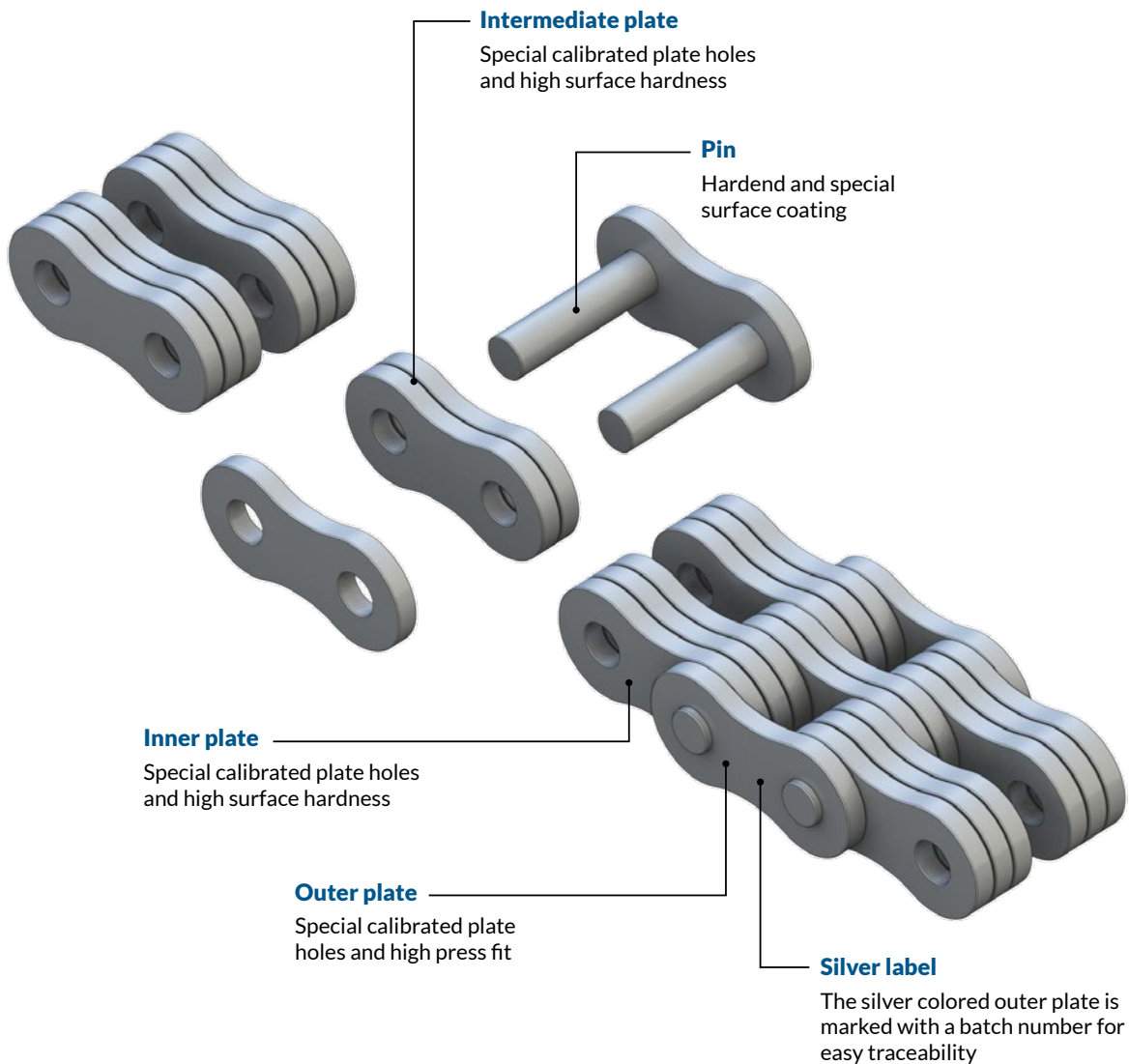
- Excellent suitable for large pitch leaf chains
- Reduced need for maintenance and longer lubrication intervals
- High wear resistance even with minimum lubrication
- Long service life under heavy loads
- Batch number on silver colored plate for traceability
- Eco-friendly: reduced lubricant requirement
- Compatible replacement for all standard chains
- Suitable as leaf chain in sealed applications

Lubrication

- Special long-life lubricant optimized by Regal Rexnord
- Operating temperature from -15° C to +75° C
- No dripping of lubricant
- Water-resistant

RexWM™ Leaf Chain

Extreme Performance



High fatigue strength

- Special calibrated plate holes
- Shot-peened chain components
- High pre-loading



Improved wear resistance

- Significantly longer relubrication intervals
- Special long-life lubricant optimized by Regal Rexnord
- Extreme long service life time
- High operating reliability



Eco-friendly

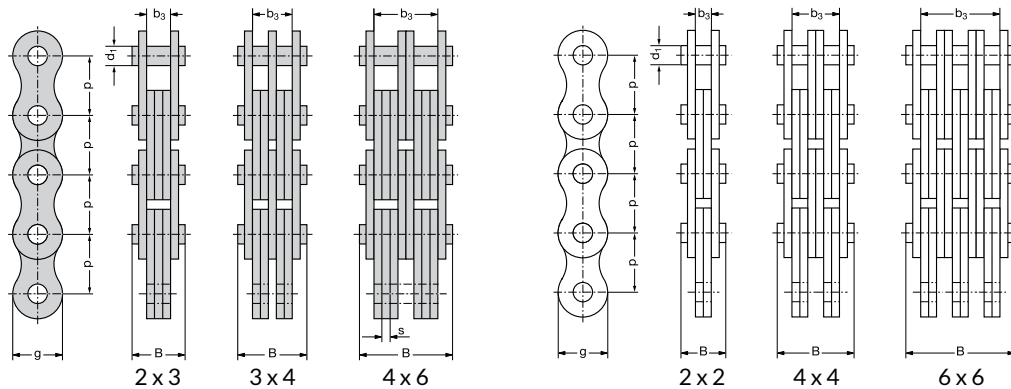
- No heavy metals; Teflon- and silicone-free
- Environmental management system conforms to DIN EN ISO 14001
- Free of chromium VI

CE This product meets the requirements of Machine Directive 2006/42/EC

F Series European Standard - RexWM™ Leaf Chain ISO 4347

Chain No.*	ISO Chain No.	Pitch		Lacing	Pin diameter d_1 max.	Plate depth g	Plate thickness s	Length over 100 pitches 100p	Pin length B max.	Width between outer plates b_3 max.	Bearing area A	Required minimum tensile strength ISO 4347 F_U	Rex™ minimum tensile strength F_B	Weight q
		p												
		Inch	mm											
F 31-44	LL 2044			4 x 4					33.7	21.8	1.43	190 000	200 000	4.3
F 31-66	LL 2066	1.25	31.75	6 x 6	10.19	25.7	3.5	3155	48.6	36.6	2.14	285 000	300 000	6.4
F 31-88	LL 2088			8 x 8					63.5	51.4	2.85	380 000	400 000	8.4
F 38-44	LL 2444			4 x 4					46.9	31.2	2.93	340 000	340 000	8.2
F 38-66	LL 2466	1.5	38.1	6 x 6	14.63	33	5	3795	68.3	52.4	4.39	510 000	510 000	12.2
F 38-88	LL 2488			8 x 8					89.7	73.5	5.85	680 000	680 000	16.2
F 44-44	LL 2844			4 x 4					54.6	36.8*	3.82	400 000	430 000	10.4
F 44-66	LL 2866	1.75	44.45	6 x 6	15.90	36	6	4426	80.2	61.4*	5.72	600 000	645 000	15.6
F 44-88	LL 2888			8 x 8					105.4	86.5*	7.63	800 000	860 000	20.8
F 50-44	LL 3244			4 x 4					59.1	39.1	4.49	520 000	520 000	12.8
F 50-66	LL 3266	2	50.8	6 x 6	17.81	41.2	6.3	5055	85.4	65.6	6.73	780 000	780 000	19.1
F 50-88	LL 3288			8 x 8					112.0	92.0	8.98	1040 000	1040 000	25.3
F 63-44	LL 4044			4 x 4					73.1	49.4	7.32	720 000	720 000	17.7
F 63-66	LL 4066	2.5	63.5	6 x 6	22.89	48	8	6320	106.5	82.7	10.99	1080 000	1080 000	26.9
F 63-88	LL 4088			8 x 8					139.9	116.0	14.65	1440 000	1440 000	35.1
F 76-44	LL 4844			4 x 4					90.5	61.4	11.70	1120 000	1120 000	30.2
F 76-66	LL 4866	3	76.2	6 x 6	29.24	62	10	7575	131.4	102.7	17.54	1680 000	1680 000	45.0
F 76-88	LL 4888			8 x 8					172.8	144.0	23.39	2240 000	2240 000	59.8

* Please contact Regal Rexnord regarding precision of fit with ISO anchors.





RexProX™ Leaf Chain

Extreme Performance

When specifying and designing our products we strive to achieve the high demands of our customers by providing significantly reduced life-cycle costs and very low maintenance. The RexProX Leaf Chain meets these criteria and is at the same time suitable for applications under extreme conditions.

Optimized chain selection

The smaller and lighter chain design provides the most evenly distribution and load to the pin. Based on an optimized material utilization, an extremely high loading capacity and maximum fatigue strength, it is ideal for heavy-duty drives and lifting purposes. The linear scalability allows an optimum chain choice fitting best to individual requirements.

Significant higher wear life time

Due to a reduced joint stress and a higher wear volume the wear lifetime for this leaf chain is now doubled. This property is completed by an excellent surface adhesion and drip resistance, even at high temperatures.

Reduced maintenance

The RexPro™ Lubrication ensures an excellent protection extending the re-lubrication interval fivefold compared to a standard leaf chain. This not only reduces the maintenance, but also increases productivity and guarantees a dependable operation.

Overall cost saving

As a well specified, high-quality product, this leaf chain lasts many times longer. It requires significantly less in-operation maintenance and saves overall costs in terms of procurement, maintenance, replacement and equipment downtime.

Industries Served:

- Material handling
- Telehandlers
- Machine tools
- Drilling machines

Features

- Complies with the excellent RexPro quality
- Excellent wear resistance
- High tensile strength
- High fatigue strength
- Optimum fatigue resistance
- New computer-controlled preloading process

Advantages

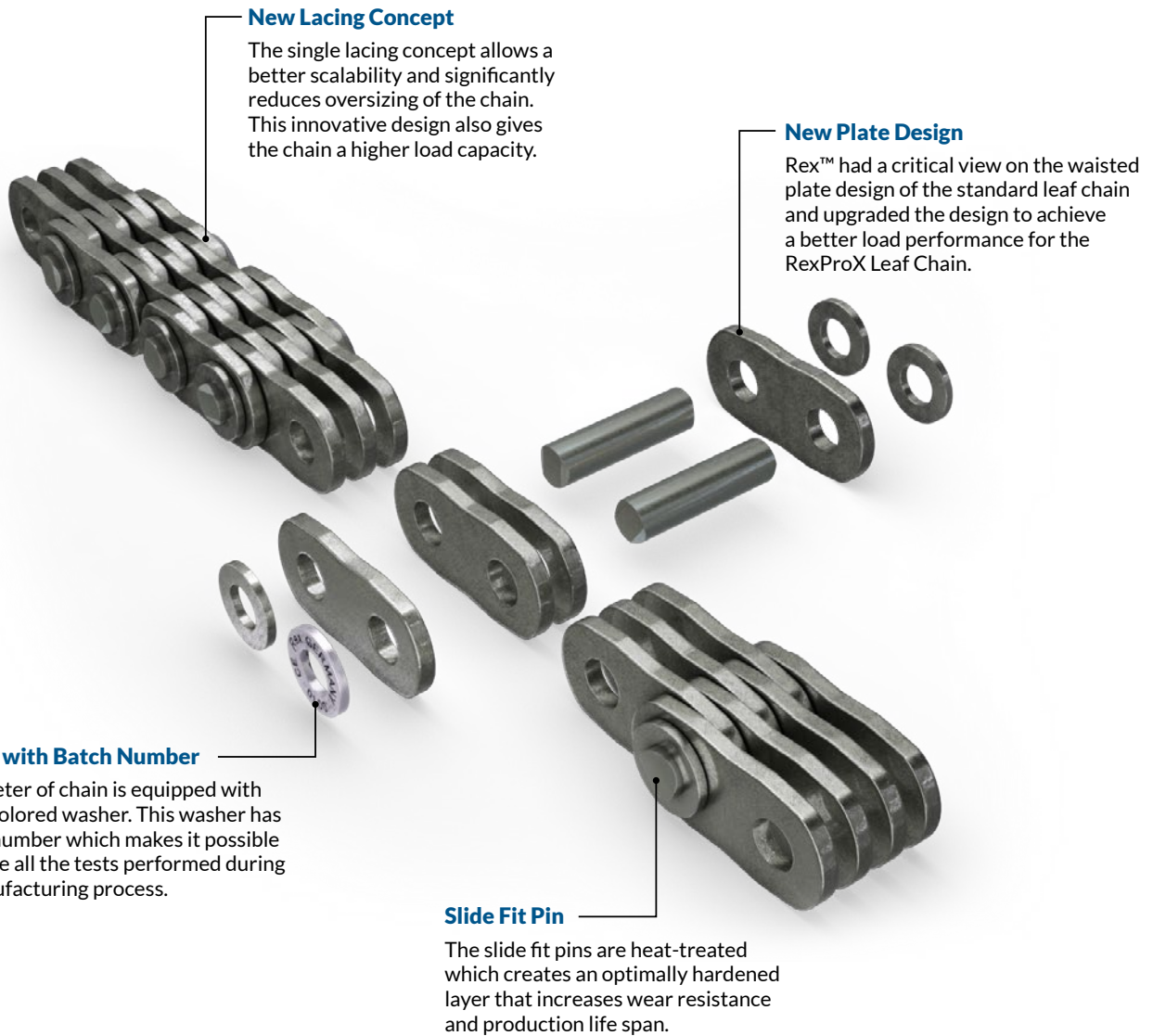
- For high-performance power transmission applications
- Extremely high impact strength
- Extremely robust, even under difficult conditions

Lubrication

- Improved protection with RexPro Lubrication
- RexPro Lubrication with NSF H2 certification, RoHS:2011 compliant for electronics industry
- Operating temperature: - 30° C to + 130° C (special lubrication can expand range to - 40° C to + 250° C)
- Very good surface adhesion; remains drip-resistant even at high temperatures
- Lubrication without heavy metals, Telon or silicone
- Other special lubricants are available (for example, lubricant with NSF H1 certification)

RexProX™ Leaf Chain

Extreme Performance



Loading capacity

- High loading capacity
- Outstanding weight performance ratio



Wear resistance

- All-round protection due to RexPro™ lubrication
- Outstanding wear resistance
- Extreme long service life



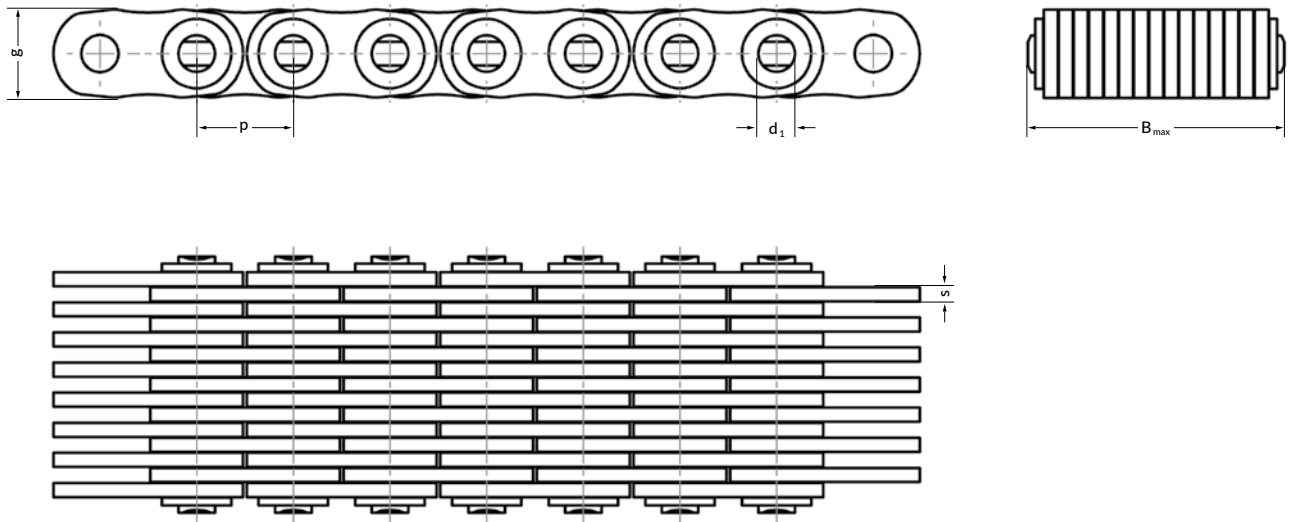
Eco-friendly

- NSF H2 certification
- RoHS:2011 conformity
- Free from chromium VI

CE This product meets the requirements of Machine Directive 2006/42/EC

RexProX™ Leaf Chain Dimensions

Rex™ 21-15



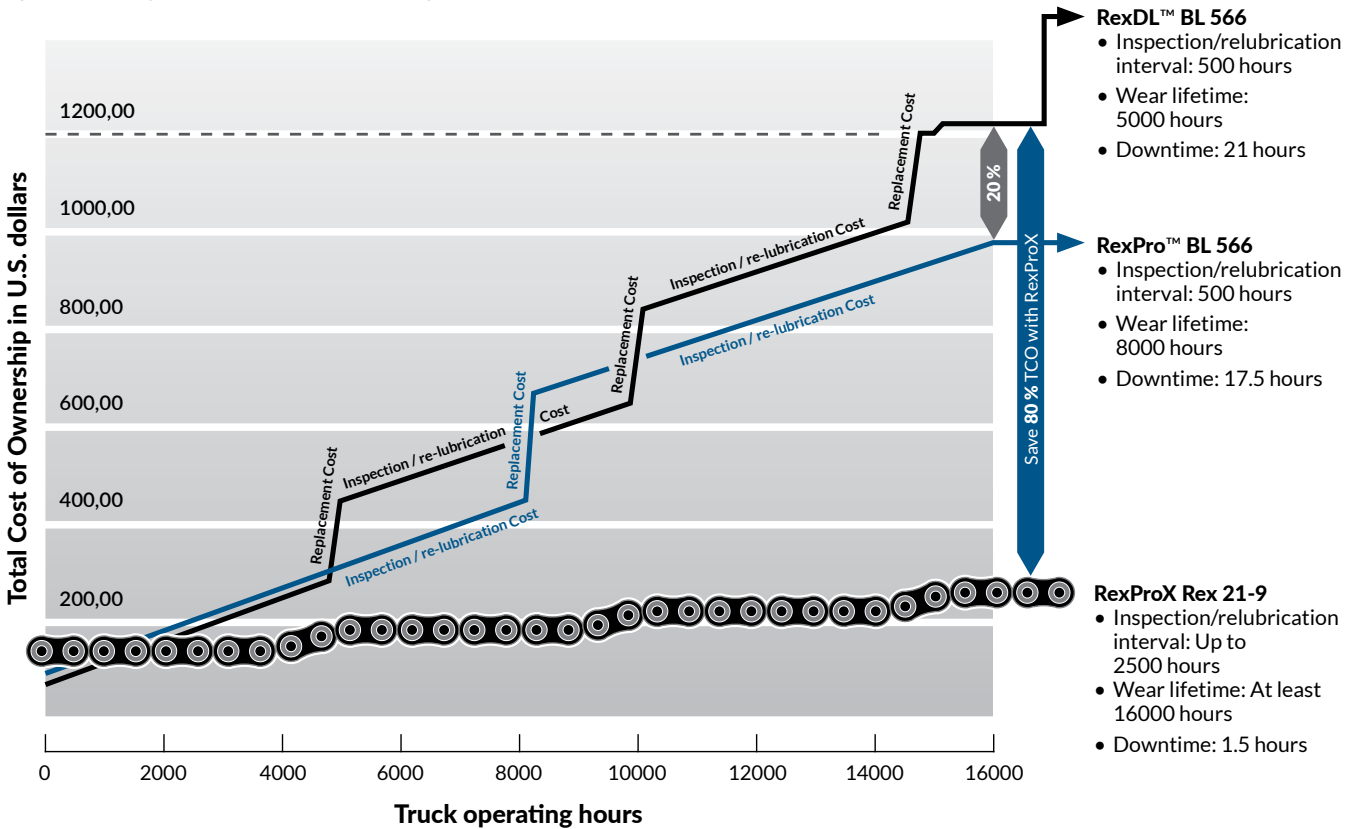
RexProX Leaf Chain

Chain type	Pitch mm	Pin Ø mm	Plate height mm	Plate thickness mm	Overall width mm	Weight kg/m	UTS kN ^①
	P	d ₁	g	s	B _{max}		
Rex 21-5	21	7.92	19	3.1	23.0	2.1	72
Rex 21-7	21	7.92	19	3.1	29.5	2.8	108
Rex 21-9	21	7.92	19	3.1	36.0	3.5	144
Rex 21-11	21	7.92	19	3.1	42.5	4.3	180
Rex 21-13	21	7.92	19	3.1	49.0	5.0	216
Rex 21-15	21	7.92	19	3.1	55.5	5.7	252
Rex 21-17	21	7.92	19	3.1	62.0	6.5	288
Rex 21-19	21	7.92	19	3.1	68.5	7.2	324

① Ultimate Tensile Strength

Save 80% Total Cost of Ownership with RexProX™ Leaf Chain

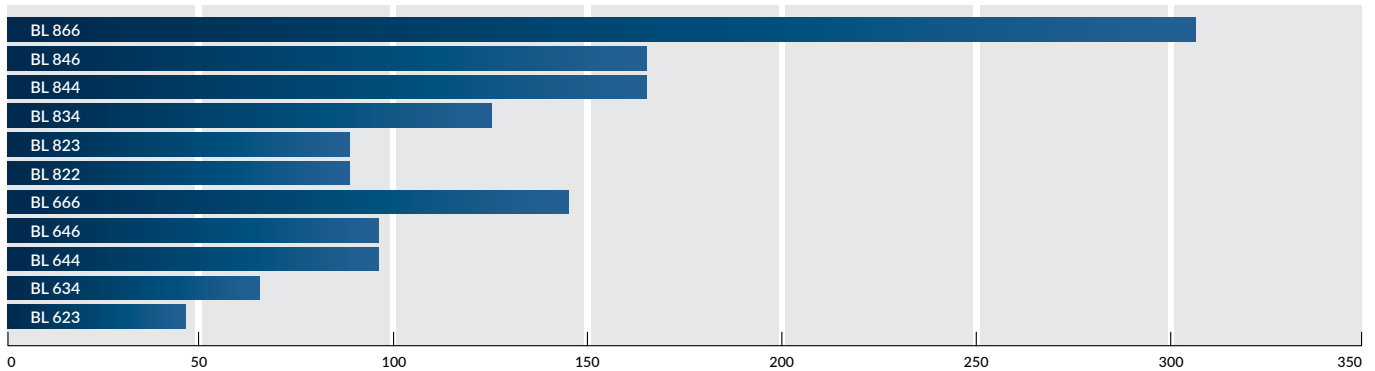
The initial cost, the wear lifetime and the maintenance intervals are the three critical factors that determine the total cost of your chain. With inspection and re-lubrication intervals up to 2500 hours and a doubled wear lifetime, the RexProX allows you to save up to 80% on your total cost of ownership.



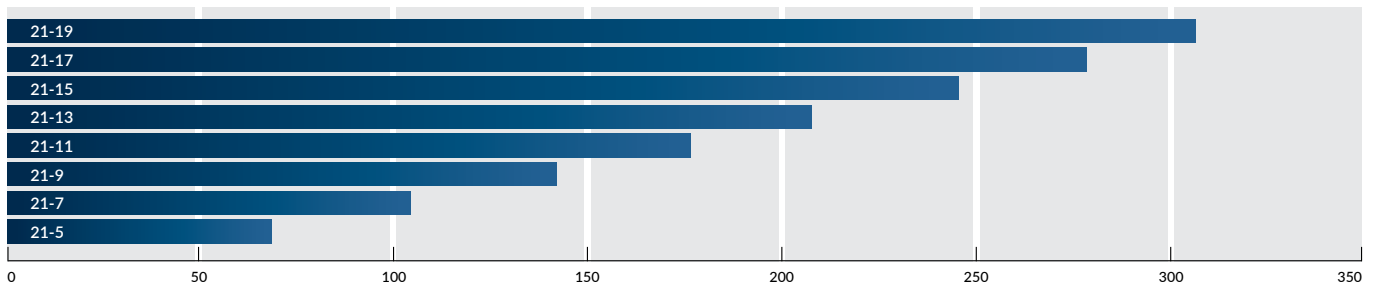
Fit and proper chain choice and scalability

Choosing standardized chains by breaking load means in many cases oversizing. The RexProX Leaf Chain provides linear scalability for optimum chain choice, fitting best to the requirements, while oversizing is significantly reduced.

ISO Minimum Tensile Strength [kN]



RexProX Leaf Chain Minimum Tensile Strength [kN]





RexOil

High Performance Chain Spray

RexOil makes it possible to maintain and relubricate roller chains and leaf chains simply and effectively in a wide range of applications. RexOil makes the lubrication of chains reliable, economical and environmentally friendly. None of the oils and lubricants used by Regal Rexnord contains silicone or Teflon, and all are distinguished by a low environmental impact (in accordance with DIN EN ISO 14001).

Industries Served:

- Packaging and logistics
- Food and beverages
- Machine construction
- Wood industry
- Agriculture

Effective lubrication

The extended spray head grants better accuracy and increased comfort of use without wasting any grease. With its outstanding penetration and lubrication properties, RexOil delivers an outstanding corrosion protection and very good wear resistance.

Longer lubrication intervals

When long-life lubricants are used, relubrication intervals are significantly longer. And in some case, the use of lubricant waxes or compounds containing solid lubricants means that relubrication can be dispensed with altogether.

The right lubrication

With RexOil, Regal Rexnord offers a long-term lubricant for many applications in an extremely wide range of industries.

Features

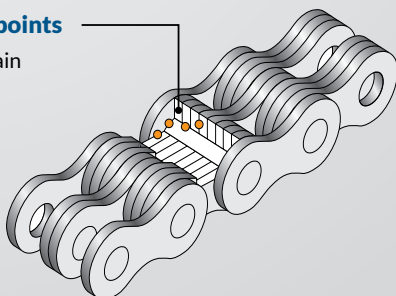
- Outstanding penetration and lubrication properties
- Ensures removal of residual lubricant
- Displaces water and moisture
- Suitable for temperature ranges from -10° C to +150° C
- Appropriate lubrication guarantees a significantly longer service life than is the case with an unlubricated chain

Advantages

- Effective corrosion protection and high oxidation stability
- Extended spray head for easy, comfortable handling
- Lubricant has NSF H2 certification
- Reliable, environmentally friendly, economical

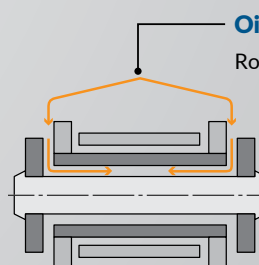
Oiling points

Leaf Chain



Oil flow

Roller Chain

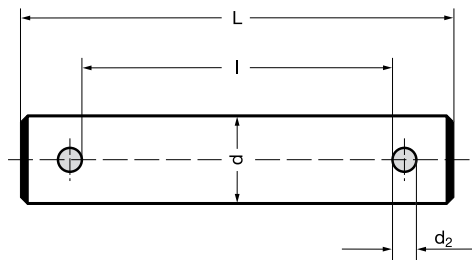
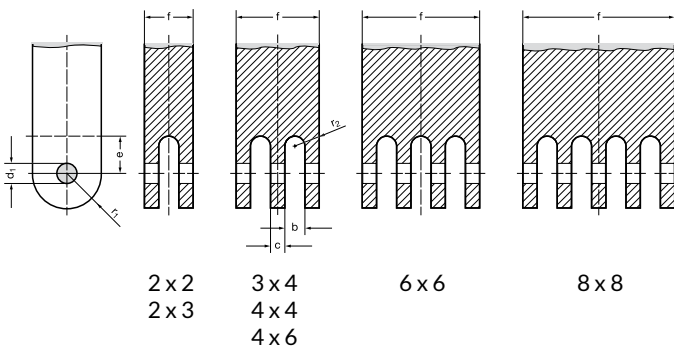


Recommended chain anchor dimensions for connecting leaf chain inner links

Chain No.	Inner link connector dimensions						
	Dimensions in mm						
	f	b	c	d ₁	e	r ₁	r ₂
	max.	min.	max.	D10	min.	max.	max.
BL 522	12.7	5.0	-				2.0
BL 523	14.9	7.5	-				2.0
BL 534	19.9	5.0	2.4				2.0
BL 544	22.4	5.0	4.8	6.0	11.0	8.0	2.0
BL 546	26.9	7.5	4.8				2.0
BL 566	31.9	5.0	4.8				2.0
BL 588	42.4	5.0	4.8				2.0
BL 623	19.9	10.3	-				5.0
BL 634	26.9	6.8	3.2				3.0
BL 644	29.9	6.8	6.4	8.0	14.0	9.5	3.0
BL 646	36.9	10.3	6.4				3.0
BL 666	42.9	6.8	6.4				3.0
BL 823	24.9	12.8	-				6.0
BL 834	32.9	8.5	4.0				4.0
BL 844	36.9	8.5	8.0				4.0
BL 846	45.9	12.8	8.0	9.6	18.0	12.5	6.0
BL 866	52.9	8.5	8.0				4.0
BL 888	69.4	8.5	8.0				4.0
BL 1023	69.4	15.1	8.0				4.0
BL 1034	39.0	10.0	4.7				5.0
BL 1044	44.0	10.0	9.4				5.0
BL 1046	54.0	15.1	9.4	11.2	22.0	15.0	7.0
BL 1066	63.0	10.0	9.4				5.0
BL 1088	79.7	10.0	9.4				5.0
BL 1223	34.3	17.7	-				8.0
BL 1234	46.0	11.8	5.5				5.0
BL 1244	51.7	11.8	11.0				5.0
BL 1246	63.3	17.7	11.0	12.8	26.0	19.0	8.0
BL 1266	75.1	11.8	11.0				5.0
BL 1288	98.4	11.8	11.0				5.0
BL 1423	38.5	20.1	-				10.0
BL 1434	52.0	13.4	6.3				6.0
BL 1444	58.4	13.4	12.6				6.0
BL 1446	71.5	20.1	12.6	14.3	31.0	22.0	10.0
BL 1466	84.9	13.4	12.6				6.0
BL 1488	111.7	13.4	12.6				6.0
BL 1623	42.8	22.5	-				10.0
BL 1634	57.7	15.0	7.1				7.0
BL 1644	65.4	15.0	14.2				7.0
BL 1646	79.6	22.5	14.2	17.5	34.0	25.0	10.0
BL 1666	94.3	15.0	14.2				7.0
BL 1688	123.7	15.0	14.2				7.0

Connecting pin for joining leaf chains to chain anchor

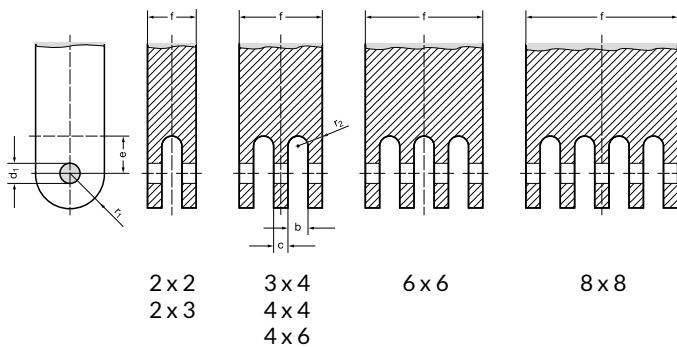
Chain No.	Connecting pin order no.	Connecting pin Dimensions in mm			
		l min.	L max.	d max.	d ₂
BL 522	709 - 355 - 22	12.8	19.4		
BL 523	709 - 355 - 23	15.0	21.6		
BL 534	709 - 355 - 34	20.0	26.6		
BL 544	709 - 355 - 44	22.5	29.1	5.94	2.0
BL 546	709 - 355 - 46	27.0	33.7		
BL 566	709 - 355 - 66	32.0	38.7		
BL 588	709 - 355 - 88	42.5	49.3		
BL 623	709 - 307 - 23	20.0	30.7		
BL 634	709 - 307 - 34	27.0	37.7		
BL 644	709 - 307 - 44	30.0	40.7	7.92	3.2
BL 646	709 - 307 - 46	37.0	47.7		
BL 666	709 - 307 - 66	43.0	53.7		
BL 823	709 - 309 - 23	25.0	35.7		
BL 834	709 - 309 - 34	33.0	43.7		
BL 844	709 - 309 - 44	37.0	47.7		
BL 846	709 - 309 - 46	46.0	56.7	9.53	3.2
BL 866	709 - 309 - 66	53.0	63.7		
BL 888	709 - 309 - 88	69.5	80.3		
BL 1023	709 - 311 - 23	30.0	42.4		
BL 1034	709 - 311 - 34	39.2	51.6		
BL 1044	709 - 311 - 44	44.2	56.6		
BL 1046	709 - 311 - 46	54.2	66.6	11.1	4.0
BL 1066	709 - 311 - 66	63.2	75.6		
BL 1088	709 - 311 - 88	79.9	92.4		
BL 1223	709 - 312 - 23	34.5	46.9		
BL 1234	709 - 312 - 34	46.2	58.6		
BL 1244	709 - 312 - 44	51.9	64.4		
BL 1246	709 - 312 - 46	63.5	76.0	12.7	4.0
BL 1266	709 - 312 - 66	75.3	87.8		
BL 1288	709 - 312 - 88	98.6	111.1		
BL 1423	709 - 314 - 23	38.7	51.1		
BL 1434	709 - 314 - 34	52.2	64.6		
BL 1444	709 - 314 - 44	58.6	71.1		
BL 1446	709 - 314 - 46	71.7	84.2	14.27	4.0
BL 1466	709 - 314 - 66	85.1	97.7		
BL 1488	709 - 314 - 88	111.9	124.5		
BL 1623	709 - 317 - 23	43.1	60.6		
BL 1634	709 - 317 - 34	58.0	75.5		
BL 1644	709 - 317 - 44	65.7	82.9		
BL 1646	709 - 317 - 46	79.9	97.4	17.46	5.0
BL 1666	709 - 317 - 66	94.6	112.2		
BL 1688	709 - 317 - 88	124.0	141.6		



All pins are fitted with 2 cotters and – from BL 1234 and F 38 upwards – with 2 additional washers.

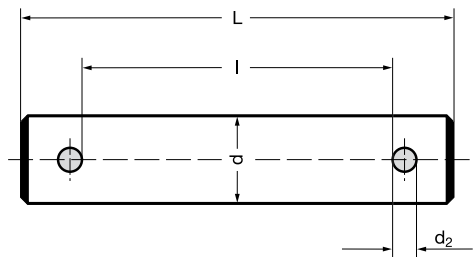
Recommended chain anchor dimensions for connecting leaf chain inner links

Chain No.	Inner link connector dimensions Dimensions in mm						
	f	b	c	d ₁	e	r ₁	r ₂
	max.	min.	max.	D10	min.	max.	max.
F 15-44	14.9						
F 15-66	21.9	3.5	3.0	5.1	8.5	8.0	1.7
F 19-44	17.5						
F 19-66	24.6	4.1	3.6	5.75	10.0	9.5	1.7
F 19V-44	22.9						
F 19V-66	32.9	5.2	4.7	6.6	10.0	10.5	2.0
F 25-44	27.9						
F 25-66	40.9	6.7	6.2	8.3	13.5	13.0	3.0
F 25-88	53.9						
F 31-44	32.9						
F 31-66	46.9	7.5	7.0	10.2	17.0	16.5	3.5
F 31-88	61.9						
F 38-44	48.0						
F 38-66	69.0	11.0	10.0	14.7	22.0	20.0	5.0
F 38-88	90.0						
F 44-44	54.8						
F 44-66	80.0	13.0	12.0	16.0	25.0	24.0	6.0
F 44-88	105.8						
F 50-44	59.7						
F 50-66	86.2	13.6	12.6	17.9	28.0	27.0	6.0
F 50-88	113.7						
F 63-44	73.0						
F 63-66	106.3	17.0	16.0	23.0	35.0	35.0	8.0
F 63-88	139.8						
F 76-44	91.2						
F 76-66	133.2	21.0	20.0	29.3	45.0	40.0	10.0
F 76-88	173.9						



Connecting pin for attaching leaf chains to chain anchor

Chain No.	Connecting pin order no.	Connecting pin dimensions Dimensions in mm			
		l min.	L max.	d max.	d ₂
F 15-44	709-205-44	15.0	21.1		
F 15-66	709-205-66	22.0	28.2	5.08	1.6
F 19-44	709-405-44	17.6	25.5		
F 19-66	709-405-66	24.7	32.7	5.72	2.0
F 19V-44	709-206-44	23.0	30.2		
F 19V-66	709-206-66	33.0	40.3	6.5	2.0
F 25-44	709-208-44	28.0	38.7		
F 25-66	709-208-66	41.0	51.7	8.28	3.2
F 25-88	709-208-88	54.0	64.7		
F 31-44	709-210-44	33.0	43.7		
F 31-66	709-210-66	47.0	57.7	10.19	3.2
F 31-88	709-210-88	62.0	72.7		
F 38-44	709-214-44	48.2	60.6		
F 38-66	709-214-66	69.2	81.6	14.63	4.0
F 38-88	709-214-88	90.2	102.6		
F 44-44	709-215-44	55.0	67.5		
F 44-66	709-215-66	80.2	92.7	15.9	4.0
F 44-88	709-215-88	106.0	118.5		
F 50-44	709-217-44	59.9	77.5		
F 50-66	709-217-66	86.4	104.0	17.81	5.0
F 50-88	709-217-88	113.9	131.5		
F 63-44	709-222-44	73.3	94.3		
F 63-66	709-222-66	106.6	127.6	22.89	6.3
F 63-88	709-222-88	140.1	161.1		
F 76-44	709-229-44	91.5	112.5		
F 76-66	709-229-66	133.5	154.5	29.23	6.3
F 76-88	709-229-88	174.2	195.2		



All pins are fitted with 2 cotters and - from BL 1234 and F 38 upwards - with 2 additional washers.

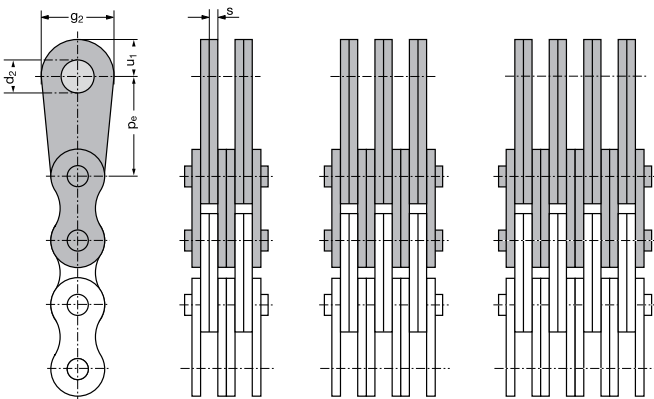
Leaf chain anchoring with end links

Chain No.	End link order no.		Dimensions in mm				
	IEG	AEG	Pe	d ₂ A11	g ₂	s	u ₁
F 15 - 44	170 - 115 - 44	45	20	8	18.0	1.5	11.0
F 15 - 66	170 - 115 - 66	65					
F 19 - 44	170 - 119 - 44	—	25	10	19.8	1.8	11.2
F 19 - 66	170 - 119 - 66	—					
F 19V - 44	170 - 120 - 44	45	25	10	19.8	1.8	11.2
F 19V - 66	170 - 120 - 66	65					
F 25 - 44	170 - 124 - 44	45	30	12	25.0	3.0	15.0
F 25 - 66	170 - 124 - 66	65					
F 25 - 88	170 - 124 - 88	85					
F 31 - 44	170 - 131 - 44	45	50	18	40.0	3.5	25.0
F 31 - 66	170 - 131 - 66	65					
F 31 - 88	170 - 131 - 88	85					
F 38 - 44	170 - 138 - 44	45	65	24	50.0	5.0	29.0
F 38 - 66	170 - 138 - 66	65					
F 38 - 88	170 - 138 - 88	85					
F 44 - 44	170 - 144 - 44	45	80	28	60.0	6.0	32.0
F 44 - 66	170 - 144 - 66	65					
F 44 - 88	170 - 144 - 88	85					
F 50 - 44	170 - 150 - 44	45	90	32	70.0	6.3	43.0
F 50 - 66	170 - 150 - 66	85					
F 50 - 88	170 - 150 - 88	85					
F 63 - 44	170 - 163 - 44	45	100	38	80.0	8.0	46.5
F 63 - 66	170 - 163 - 66	65					
F 63 - 88	170 - 163 - 88	85					

End links are available as inner and outer links. Ordering example for end links to fit leaf chain F 38-44:

- a) as IEG (inner end link): 170-138-44
- b) as AEG (outer end link): 170-138-45

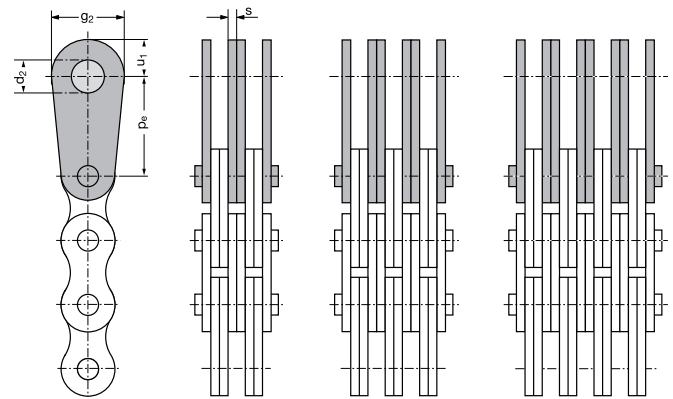
End links as inner links (IEG)



Scope of delivery:

End links (pear-shaped) along with leaf chain outer link supplied as a complete ready-to-rivet sub-assembly or assembled to chain.

End links as outer links (AEG)



Scope of delivery:

End links (pear-shaped) and matching ready-to-rivet pin or assembled to chain.

Recommended chain anchor dimensions for connecting leaf chain inner links

Chain No.	Inner link connector dimensions Dimensions in mm						
	f	b	c	d ₁	e	r ₁	r ₂
	max.	min.	max.	D10	min.	max.	max.
AL 544	18.9	4.2	4.0				2.0
AL 566	26.9	4.2	4.0	5.1	9.0	6.5	2.0
AL 588	35.4	4.2	4.0				2.0
AL 644	22.4	5.0	4.8				2.0
AL 666	31.9	5.0	4.8	6.0	11.0	8.0	2.0
AL 688	42.4	5.0	4.8				2.0
AL 844	29.9	6.8	6.4				3.0
AL 866	42.9	6.8	6.4	8.0	14.0	9.5	3.0
AL 888	56.4	6.8	6.4				3.0
AL 1044	36.9	8.5	8.0				4.0
AL 1066	52.9	8.5	8.0	9.6	18.0	12.5	4.0
AL 1088	69.4	8.5	8.0				4.0
AL 1244	44.0	10.0	9.4				5.0
AL 1266	63.0	10.0	9.4	11.2	22.0	15.0	5.0
AL 1288	79.7	10.0	9.4				5.0
AL 1644	58.4	13.4	12.6				6.0
AL 1666	84.9	13.4	12.6	14.3	31.0	22.0	6.0
AL 1688	111.7	13.4	12.6				6.0

Connecting pin for attaching leaf chains to chain anchor

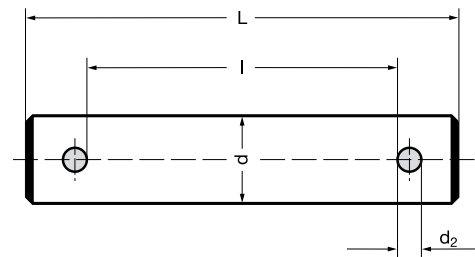
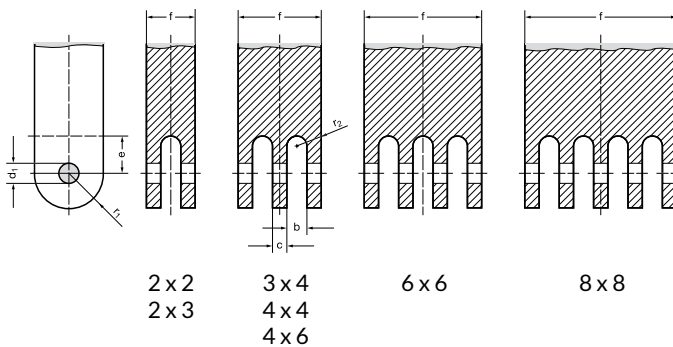
Chain No.	Connecting pin order no.	Connecting pin dimensions Dimensions in mm			
		l min.	L max.	d max.	d ₂
AL 544	709 - 305 - 44	19.0	25.2		
AL 566	709 - 305 - 66	27.0	33.3	5.08	1.6
AL 588	709 - 305 - 88	35.5	41.8		
AL 644	709 - 355 - 44	22.5	29.1		
AL 666	709 - 355 - 66	32.0	38.7	5.94	2.0
AL 688	709 - 355 - 88	42.5	49.3		
AL 844	709 - 307 - 44	30.0	40.7		
AL 866	709 - 307 - 66	43.0	53.7	7.92	3.2
AL 888	709 - 307 - 88	56.5	67.2		
AL 1044	709 - 309 - 44	37.0	47.7		
AL 1066	709 - 309 - 66	53.0	63.7	9.53	3.2
AL 1088	709 - 309 - 88	69.5	80.3		
AL 1244	709 - 311 - 44	44.2	56.6		
AL 1266	709 - 311 - 66	63.2	75.6	11.1	4.0
AL 1288	709 - 311 - 88	79.9	92.4		
AL 1644	709 - 314 - 44	58.6	71.1		
AL 1666	709 - 314 - 66	85.1	97.7	14.27	4.0
AL 1688	709 - 314 - 88	111.9	124.5		

Recommended chain anchor dimensions for connecting leaf chain inner links

Chain No.	Inner link connector dimensions Dimensions in mm						
	f	b	c	d ₁	e	r ₁	r ₂
	max.	min.	max.	D10	min.	max.	max.
Rex 21-5	22.6						
Rex 21-7	29.0						
Rex 21-9	35.4						
Rex 21-11	41.8						
Rex 21-13	48.2	3.3	3.1	8.0	13.0	10.0	1.5
Rex 21-15	54.6						
Rex 21-17	61.0						
Rex 21-19	67.4						

Connecting pin for attaching leaf chains to chain anchor

Chain No.	Connecting pin order no.	Connecting pin dimensions Dimensions in mm			
		l min.	L max.	d max.	d ₂
Rex 21-5	709 - 021 - 05	22.7	33.5		
Rex 21-7	709 - 021 - 07	29.1	40.0		
Rex 21-9	709 - 021 - 09	35.5	46.5		
Rex 21-11	709 - 021 - 11	41.9	53.0		
Rex 21-13	709 - 021 - 13	48.3	59.5	7.92	3.2
Rex 21-15	709 - 021 - 15	54.7	66.0		
Rex 21-17	709 - 021 - 17	61.1	72.5		
Rex 21-19	709 - 021 - 19	67.5	79.0		



All pins are fitted with 2 cotters and – from AL 1644 upwards – with 2 additional washers.

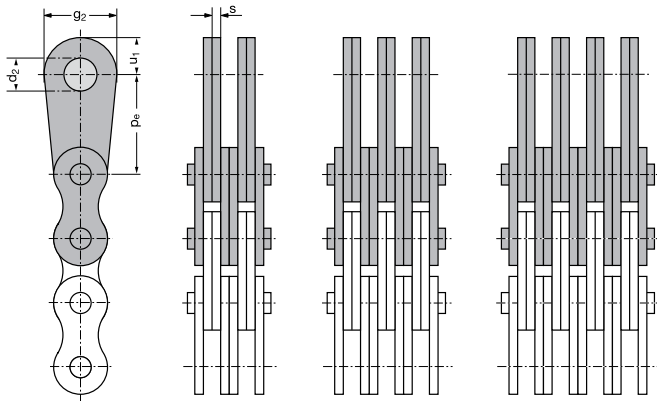
Leaf chain anchoring with end links

Chain No.	End link order no.		Dimensions in mm				
	IEG	AEG	Pe	d ₂ A11	g ₂	s	u ₁
AL 644	170 - 118 - 44	45	25	10	19.8	2.4	11.2
AL 666	170 - 118 - 66	65					
AL 688	170 - 118 - 88	85	40	14	30.0	4.0	18.0
AL 1044	170 - 130 - 44	45					
AL 1066	170 - 130 - 66	65					

End links are available as inner and outer links. Ordering example for end links to fit leaf chain AL 644:

a) as IEG (inner end link): 170-118-44 b) as AEG (outer end link): 170-118-45

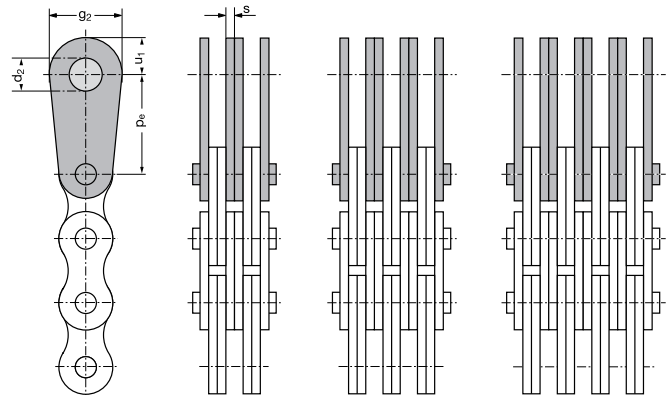
End links as inner links (IEG)



Scope of delivery:

End links (pear-shaped) along with leaf chain outer link supplied as a complete ready-to-riquet sub-assembly or assembled to chain.

End links as outer links (AEG)



Scope of delivery:

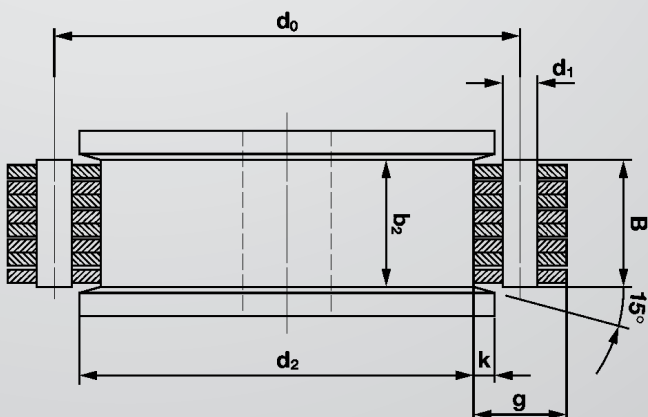
End links (pear-shaped) and matching ready-to-riquet pin or assembled to chain.

Sheave

Leaf chains can be guided over untoothed sheaves. The sheaves should have the largest possible diameter. The diameter of the sheave determines the size of the link movement at the chain inlet and outlet, and thus also to a considerable extent the wearing life-span of the chain. Moreover, a large sheave diameter contributes to smooth running of the chain.

Dimensions of Sheave

The diameter of sheave should as far as possible be 5 times, but at least 3 times the chain pitch. The width of the running face, B, in the case of a sheave should correspond to the leaf chain width across the rivet pin. The flanged wheel height "k" is selected 15% smaller than corresponds to the distance between the plate upper edge and the rivet pin.



Sheave

$$d_2 = 5 \cdot p; \text{ min } 3 \times p$$

$$d_0 = d_2 + g$$

$$b_2 = B$$

$$k = 0,43 (g - d_1)$$

d₂ = Sheave diameter

d₀ = Reference pitch circle diameter

b₂ = Sheave tread width

k = Flanged wheel height

p = Chain pitch

g = Plate depth

d₁ = Rivet pin diameter

B = Leaf chain width over rivet pin



Overview of Rex™ Leaf Chain Portfolio

Extreme Performance Leaf Chain

Chain	Static loading	Dynamic loading	Power rating	Wear resistance	Acid corrosion resistance	Damp corrosion resistance	Eco-friendly	Ex-Works Lubrication*	Linear scalability
RexHiPro™ Leaf Chain								VSK001	
Rex Athletic™ Leaf Chain								VSK010	
RexWM™ Leaf Chain								VSK006	
RexProX™ Leaf Chain								VSK001	

* Special or other lubrication types on request

High Performance Leaf Chain

Chain	Static loading	Dynamic loading	Power rating	Wear resistance	Acid corrosion resistance	Damp corrosion resistance	Eco-friendly	Ex-Works Lubrication*	Linear scalability
RexPro™ Leaf Chain								VSK001	

* Special or other lubrication types on request

Approved Performance Leaf Chain

Chain	Static loading	Dynamic loading	Power rating	Wear resistance	Acid corrosion resistance	Damp corrosion resistance	Eco-friendly	Ex-Works Lubrication	Linear scalability
RexDL™ Leaf Chain								REACH conform	

Symbol Key



Loading capacity



Damp corrosion resistance



Acid corrosion resistance



Wear resistance



Eco-friendly



Linear scalability

PRODUCT CATALOG



Rex™

Motion Control Solutions Regal Rexnord

Contact us: [rexnord.com/contact](https://www.regalrexnord.com/contact)

[regalrexnord.com](https://www.regalrexnord.com)

The proper selection and application of products and components, including assuring that the product is safe for its intended use, are the responsibility of the customer. To view our Application Considerations, please visit <https://www.regalrexnord.com/Application-Considerations>. To view our Standard Terms and Conditions of Sale, please visit <https://www.regalrexnord.com/Terms-and-Conditions-of-Sale> (which may redirect to other website locations based on product family).

"Regal Rexnord" is not indicative of legal entity.

Regal Rexnord, Rex, RexAthletic, RexHiPro, RexWM, RexPro, RexProX, and RexDL are trademarks of Regal Rexnord Corporation or one of its affiliated companies.

© 2017, 2023 Regal Rexnord Corporation, All Rights Reserved. MCC22049E • Form# ECE2-005_MA4E

RegalRexnord™