

U.S. Tsubaki Power Transmission, LLC
 U.S. Tsubaki Holdings, Inc.
 Corporate Headquarters
 301 E. Marquardt Dr.
 Wheeling, IL 60090 USA

Toll Free: 800.323.7790

Phone: 847.459.9500

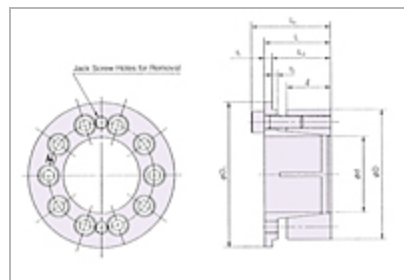
Fax: 847.459.9515

Email: sales@ustsubaki.com

Website: www.ustsubaki.com

POWER-LOCK AE INCH SERIES KEYLESS LOCKING DEVICE

- Ideal for narrow hubs
- Interchangeable with AS Series
- Flanged construction allows for fast installation
- Inch size range: 3/4" - 4.00"



1 2

<u>Item #</u>	<u>d - Shaft O.D.</u>	<u>D - Hub Counter I.D.</u>	<u>L</u>	<u>L2</u>	<u>L</u>	<u>Lt</u>	<u>T1</u>	<u>Quantity</u>
<u>PLLAE</u>	0.750 in	1.850 in	0.748 in	0.760 in	0.976 in	1.075 in	0.098 in	1

<u>Item #</u>	<u>d - Shaft O.D.</u>	<u>D - Hub Counter I.D.</u>	<u>I</u>	<u>L2</u>	<u>L</u>	<u>Lt</u>	<u>T1</u>	<u>Quantity</u>
<u>PLPAE</u>	0.875 in	1.850 in	0.748 in	0.760 in	0.976 in	1.075 in	0.098 in	1
<u>PL1AE</u>	1.000 in	1.968 in	0.748 in	0.780 in	0.996 in	1.094 in	0.098 in	1
<u>PL1BAE</u>	1.125 in	2.165 in	0.748 in	0.748 in	0.996 in	1.126 in	0.130 in	1
<u>PL1CAE</u>	1.188 in	2.165 in	0.748 in	0.748 in	0.996 in	1.126 in	0.130 in	1
<u>PL1DAE</u>	1.250 in	2.362 in	0.807 in	0.815 in	1.075 in	1.217 in	0.142 in	1
<u>PL1FAE</u>	1.375 in	2.362 in	0.807 in	0.815 in	1.075 in	1.217 in	0.142 in	1
<u>PL1GAE</u>	1.437 in	2.559 in	0.807 in	0.823 in	1.083 in	1.224 in	0.142 in	1
<u>PL1HAE</u>	1.500 in	2.559 in	0.807 in	0.823 in	1.083 in	1.224 in	0.142 in	1
<u>PL1JAE</u>	1.625 in	2.953 in	0.925 in	0.938 in	1.213 in	1.370 in	0.157 in	1
<u>PL1KAE</u>	1.688 in	2.953 in	0.925 in	0.938 in	1.213 in	1.370 in	0.157 in	1
<u>PL1LAE</u>	1.750 in	2.953 in	0.925 in	0.938 in	1.213 in	1.370 in	0.157 in	1

<u>Item #</u>	<u>d - Shaft O.D.</u>	<u>D - Hub Counter I.D.</u>	<u>I</u>	<u>L2</u>	<u>L</u>	<u>Lt</u>	<u>T1</u>	<u>Quantity</u>
<u>PL1PAE</u>	1.875 in	3.150 in	0.925 in	0.945 in	1.220 in	1.378 in	0.157 in	1
<u>PL1RAE</u>	1.938 in	3.150 in	0.925 in	0.945 in	1.220 in	1.378 in	0.157 in	1
<u>PL2AE</u>	2.000 in	3.150 in	0.925 in	0.945 in	1.220 in	1.378 in	0.157 in	1
<u>PL2BAE</u>	2.125 in	3.346 in	0.925 in	0.938 in	1.213 in	1.370 in	0.157 in	1
<u>PL2CAE</u>	2.188 in	3.346 in	0.925 in	0.938 in	1.213 in	1.370 in	0.157 in	1
<u>PL2DAE</u>	2.250 in	3.543 in	0.925 in	0.938 in	1.213 in	1.370 in	0.157 in	1
<u>PL2FAE</u>	2.375 in	3.543 in	0.925 in	0.938 in	1.213 in	1.370 in	0.157 in	1
<u>PL2GAE</u>	2.438 in	3.740 in	0.925 in	0.938 in	1.213 in	1.370 in	0.157 in	1
<u>PL2HAE</u>	2.500 in	3.740 in	0.925 in	0.938 in	1.213 in	1.370 in	0.157 in	1
<u>PL2IAE</u>	2.562 in	3.740 in	0.925 in	0.938 in	1.213 in	1.370 in	0.157 in	1
<u>PL2KAE</u>	2.625 in	4.331 in	1.102 in	1.103 in	1.437 in	1.614 in	0.177 in	1

<u>Item #</u>	<u>d - Shaft O.D.</u>	<u>D - Hub Counter I.D.</u>	<u>l</u>	<u>L2</u>	<u>L</u>	<u>Lt</u>	<u>T1</u>	<u>Quantity</u>
<u>PL2LAE</u>	2.688 in	4.331 in	1.102 in	1.103 in	1.437 in	1.614 in	0.177 in	1
<u>PL2PAE</u>	2.750 in	4.528 in	1.102 in	1.103 in	1.437 in	1.614 in	0.177 in	1