

U.S. Tsubaki Power Transmission, LLC
 U.S. Tsubaki Holdings, Inc.
 Corporate Headquarters
 301 E. Marquardt Dr.
 Wheeling, IL 60090 USA

Toll Free: 800.323.7790

Phone: 847.459.9500

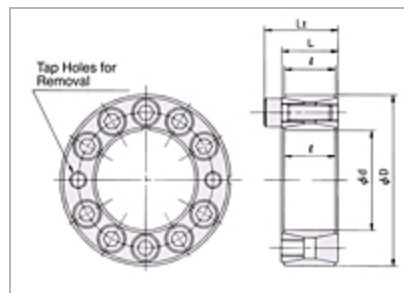
Fax: 847.459.9515

Email: sales@ustsubaki.com

Website: www.ustsubaki.com

POWER-LOCK AS INCH SERIES CARBON STEEL KEYLESS LOCKING DEVICE

- Most popular series world-wide
- Easy machining of shaft and hub
- Can use on shafts with a keyway
- Inch size range: 3/4" thru 11-13/16"



<u>Item #</u>	<u>d - Shaft O.D.</u>	<u>D - Hub Counter I.D.</u>	<u>L</u>	<u>I</u>	<u>Lt</u>	<u>Transmissible Torque</u>	<u>Quantity</u>
<u>PLL</u>	0.750 in	1.850 in	0.787 in	0.709 in	1.024 in	188 ft•lb	1
<u>PLP</u>	0.875 in	1.850 in	0.787 in	0.709 in	1.024 in	217 ft•lb	1
<u>PL1</u>	1.000 in	1.969 in	0.787 in	0.709 in	1.024 in	318 ft•lb	1
<u>PL1B</u>	1.125 in	2.165 in	0.787 in	0.709 in	1.024 in	354 ft•lb	1
<u>PL1C</u>	1.188 in	2.159 in	0.819 in	0.709 in	1.055 in	376 ft•lb	1
<u>PL1D</u>	1.250 in	2.362 in	0.787 in	0.709 in	1.024 in	499 ft•lb	1
<u>PL1E</u>	1.375 in	2.365 in	0.773 in	0.709 in	1.009 in	550 ft•lb	1
<u>PL1G</u>	1.438 in	2.559 in	0.787 in	0.709 in	1.024 in	637 ft•lb	1
<u>PL1H</u>	1.500 in	2.559 in	0.787 in	0.709 in	1.024 in	658 ft•lb	1
<u>PL1J</u>	1.625 in	2.953 in	0.945 in	0.827 in	1.260 in	1085 ft•lb	1
<u>PL1K</u>	1.688 in	2.953 in	0.945 in	0.827 in	1.260 in	1122 ft•lb	1

<u>Item #</u>	<u>d - Shaft O.D.</u>	<u>D - Hub Counter I.D.</u>	<u>L</u>	<u>I</u>	<u>Lt</u>	<u>Transmissible Torque</u>	<u>Quantity</u>
<u>PL1L</u>	1.750 in	2.953 in	0.945 in	0.827 in	1.260 in	1164 ft•lb	1
<u>PL1P</u>	1.875 in	3.150 in	0.945 in	0.827 in	1.260 in	1244 ft•lb	1
<u>PL1R</u>	1.938 in	3.150 in	0.945 in	0.827 in	1.260 in	1287 ft•lb	1
<u>PL2</u>	2.000 in	3.346 in	0.945 in	0.827 in	1.260 in	1627 ft•lb	1
<u>PL2B</u>	2.125 in	3.346 in	0.945 in	0.827 in	1.260 in	1729 ft•lb	1
<u>PL2C</u>	2.188 in	3.543 in	0.945 in	0.827 in	1.260 in	1779 ft•lb	1
<u>PL2D</u>	2.250 in	3.543 in	0.945 in	0.827 in	1.260 in	1827 ft•lb	1
<u>PL2F</u>	2.375 in	3.531 in	0.945 in	0.827 in	1.260 in	1931 ft•lb	1
<u>PL2G</u>	2.438 in	3.740 in	0.945 in	0.827 in	1.260 in	2170 ft•lb	1
<u>PL2H</u>	2.500 in	3.740 in	0.945 in	0.827 in	1.260 in	2228 ft•lb	1
<u>PL2I</u>	2.562 in	3.737 in	0.962 in	0.827 in	1.277 in	2278 ft•lb	1

<u>Item #</u>	<u>d - Shaft O.D.</u>	<u>D - Hub Counter I.D.</u>	<u>L</u>	<u>I</u>	<u>Lt</u>	<u>Transmissible Torque</u>	<u>Quantity</u>
<u>PL2J</u>	2.625 in	4.337 in	1.073 in	0.984 in	1.467 in	3400 ft·lb	1
<u>PL2K</u>	2.688 in	4.337 in	1.073 in	0.984 in	1.467 in	3480 ft·lb	1
<u>PL2L</u>	2.750 in	4.337 in	1.073 in	0.984 in	1.467 in	3537 ft·lb	1

1 2 3