



U.S. Tsubaki Power Transmission, LLC
 U.S. Tsubaki Holdings, Inc.
 Corporate Headquarters
 301 E. Marquardt Dr.
 Wheeling, IL 60090 USA

Toll Free: 800.323.7790

Phone: 847.459.9500

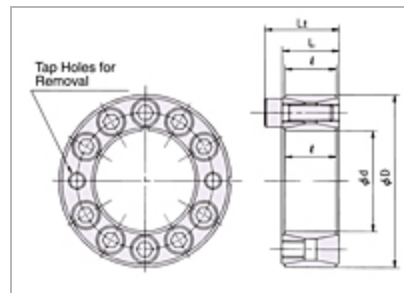
Fax: 847.459.9515

Email: sales@ustsubaki.com

Website: www.ustsubaki.com

POWER-LOCK AS METRIC SERIES CARBON STEEL KEYLESS LOCKING

- Most popular series world-wide
- Easy machining of shaft and hub
- Can use on shafts with a keyway
- Metric size range: 19-mm thru 300-mm



1 2

<u>Item #</u>	<u>d - Shaft O.D.</u>	<u>D - Hub Counter I.D.</u>	<u>L</u>	<u>l</u>	<u>Lt</u>	<u>Transmissible Torque</u>	<u>Quantity</u>
<u>PL019X047</u>	0.748 in	1.850 in	0.787 in	0.709 in	1.024 in	181 ft•lb	1

<u>Item #</u>	<u>d - Shaft O.D.</u>	<u>D - Hub Counter I.D.</u>	<u>L</u>	<u>I</u>	<u>Lt</u>	<u>Transmissible Torque</u>	<u>Quantity</u>
<u>PL020X047</u>	0.787 in	1.850 in	0.787 in	0.709 in	1.024 in	196 ft·lb	1
<u>PL022X047</u>	0.866 in	1.850 in	0.787 in	0.709 in	1.024 in	217 ft·lb	1
<u>PL024X050</u>	0.945 in	1.969 in	0.787 in	0.709 in	1.024 in	297 ft·lb	1
<u>PL025X050</u>	0.984 in	1.969 in	0.787 in	0.709 in	1.024 in	311 ft·lb	1
<u>PL028X055</u>	1.102 in	2.165 in	0.787 in	0.709 in	1.024 in	347 ft·lb	1
<u>PL030X055</u>	1.181 in	2.165 in	0.787 in	0.709 in	1.024 in	376 ft·lb	1
<u>PL032X060</u>	1.260 in	2.362 in	0.787 in	0.709 in	1.024 in	499 ft·lb	1
<u>PL035X060</u>	1.378 in	2.362 in	0.787 in	0.709 in	1.024 in	550 ft·lb	1
<u>PL038X065</u>	1.496 in	2.559 in	0.787 in	0.709 in	1.024 in	658 ft·lb	1
<u>PL040X065</u>	1.575 in	2.559 in	0.787 in	0.709 in	1.024 in	694 ft·lb	1
<u>PL042X075</u>	1.654 in	2.953 in	0.945 in	0.827 in	1.260 in	1099 ft·lb	1

<u>Item #</u>	<u>d - Shaft O.D.</u>	<u>D - Hub Counter I.D.</u>	<u>L</u>	<u>I</u>	<u>Lt</u>	<u>Transmissible Torque</u>	<u>Quantity</u>
<u>PL045X075</u>	1.772 in	2.953 in	0.945 in	0.827 in	1.260 in	1180 ft•lb	1
<u>PL048X080</u>	1.890 in	3.150 in	0.945 in	0.827 in	1.260 in	1254 ft•lb	1
<u>PL050X080</u>	1.969 in	3.150 in	0.945 in	0.827 in	1.260 in	1306 ft•lb	1
<u>PL055X085</u>	2.165 in	3.346 in	0.945 in	0.827 in	1.260 in	1763 ft•lb	1
<u>PL060X090</u>	2.362 in	3.543 in	0.945 in	0.827 in	1.260 in	1925 ft•lb	1
<u>PL065X095</u>	2.559 in	3.740 in	0.945 in	0.827 in	1.260 in	2279 ft•lb	1
<u>PL070X110</u>	2.756 in	4.331 in	1.102 in	0.984 in	1.496 in	3540 ft•lb	1
<u>PL075X115</u>	2.953 in	4.528 in	1.102 in	0.984 in	1.496 in	3828 ft•lb	1
<u>PL080X120</u>	3.150 in	4.724 in	1.102 in	0.984 in	1.496 in	4049 ft•lb	1
<u>PL085X125</u>	3.346 in	4.921 in	1.102 in	0.984 in	1.496 in	4698 ft•lb	1
<u>PL090X130</u>	3.543 in	5.118 in	1.102 in	0.984 in	1.496 in	4986 ft•lb	1

<u>Item #</u>	<u>d - Shaft O.D.</u>	<u>D - Hub Counter I.D.</u>	<u>L</u>	<u>I</u>	<u>Lt</u>	<u>Transmissible Torque</u>	<u>Quantity</u>
<u>PL095X135</u>	3.740 in	5.315 in	1.102 in	0.984 in	1.496 in	5709 ft•lb	1
<u>PL100X145</u>	3.937 in	5.709 in	1.299 in	1.142 in	1.772 in	7376 ft•lb	1