

U.S. Tsubaki Power Transmission, LLC
 U.S. Tsubaki Holdings, Inc.
 Corporate Headquarters
 301 E. Marquardt Dr.
 Wheeling, IL 60090 USA

Toll Free: 800.323.7790

Phone: 847.459.9500

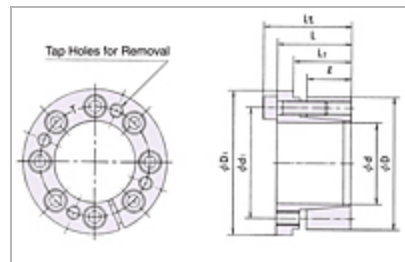
Fax: 847.459.9515

Email: sales@ustsubaki.com

Website: www.ustsubaki.com

POWER-LOCK KE METRIC SERIES KEYLESS LOCKING DEVICE

- Ideal for "A" plate sprockets and narrow gears
- Designed to suit a wide range of shaft tolerances
- Ideal for small shaft diameters
- Metric size range: 5mm - 100mm



1 2

<u>Item #</u>	<u>d - Shaft O.D.</u>	<u>D - Hub Counter I.D.</u>	<u>D1 - O.D. of KE</u>	<u>Lt</u>	<u>L</u>	<u>Transmissible Torque</u>	<u>Quantity</u>
<u>PL005X016KE</u>	0.197 in	0.630 in	0.728 in	0.650 in	0.531 in	6 ft·lb	1
<u>PL006X017KE</u>	0.236 in	0.669 in	0.768 in	0.650 in	0.531 in	7 ft·lb	1

<u>Item #</u>	<u>d - Shaft O.D.</u>	<u>D - Hub Counter I.D.</u>	<u>D1 - O.D. of KE</u>	<u>Lt</u>	<u>L</u>	<u>Transmissible Torque</u>	<u>Quantity</u>
<u>PL008X021KE</u>	0.315 in	0.827 in	0.925 in	0.807 in	0.650 in	18 ft•lb	1
<u>PL010X023KE</u>	0.394 in	0.906 in	1.004 in	0.807 in	0.650 in	23 ft•lb	1
<u>PL011X024KE</u>	0.433 in	0.945 in	1.043 in	0.807 in	0.650 in	25 ft•lb	1
<u>PL012X026KE</u>	0.472 in	1.024 in	1.122 in	0.807 in	0.650 in	37 ft•lb	1
<u>PL014X028KE</u>	0.551 in	1.102 in	1.201 in	0.945 in	0.787 in	54 ft•lb	1
<u>PL015X029KE</u>	0.591 in	1.142 in	1.240 in	0.945 in	0.787 in	69 ft•lb	1
<u>PL016X030KE</u>	0.630 in	1.181 in	1.280 in	0.945 in	0.787 in	75 ft•lb	1
<u>PL017X031KE</u>	0.669 in	1.221 in	1.319 in	0.945 in	0.787 in	79 ft•lb	1
<u>PL018X032KE</u>	0.709 in	1.260 in	1.358 in	0.945 in	0.787 in	83 ft•lb	1
<u>PL019X033KE</u>	0.748 in	1.299 in	1.398 in	0.945 in	0.787 in	89 ft•lb	1
<u>PL020X038KE</u>	0.787 in	1.496 in	1.654 in	1.181 in	0.984 in	152 ft•lb	1

<u>Item #</u>	<u>d - Shaft O.D.</u>	<u>D - Hub Counter I.D.</u>	<u>D1 - O.D. of KE</u>	<u>Lt</u>	<u>L</u>	<u>Transmissible Torque</u>	<u>Quantity</u>
<u>PL022X040KE</u>	0.866 in	1.575 in	1.732 in	1.181 in	0.984 in	167 ft•lb	1
<u>PL024X042KE</u>	0.945 in	1.654 in	1.811 in	1.181 in	0.984 in	243 ft•lb	1
<u>PL025X043KE</u>	0.984 in	1.693 in	1.850 in	1.181 in	0.984 in	253 ft•lb	1
<u>PL028X046KE</u>	1.102 in	1.811 in	1.969 in	1.299 in	1.102 in	319 ft•lb	1
<u>PL030X048KE</u>	1.181 in	1.890 in	2.047 in	1.299 in	1.102 in	380 ft•lb	1
<u>PL032X050KE</u>	1.260 in	1.969 in	2.126 in	1.299 in	1.102 in	405 ft•lb	1
<u>PL035X057KE</u>	1.378 in	2.244 in	2.441 in	1.496 in	1.260 in	500 ft•lb	1
<u>PL038X060KE</u>	1.496 in	2.362 in	2.559 in	1.496 in	1.260 in	679 ft•lb	1
<u>PL040X062KE</u>	1.575 in	2.441 in	2.638 in	1.496 in	1.260 in	715 ft•lb	1
<u>PL042X064KE</u>	1.654 in	2.520 in	2.717 in	1.496 in	1.260 in	745 ft•lb	1
<u>PL045X067KE</u>	1.772 in	2.638 in	2.835 in	1.496 in	1.260 in	804 ft•lb	1

<u>Item #</u>	<u>d - Shaft O.D.</u>	<u>D - Hub Counter I.D.</u>	<u>D1 - O.D. of KE</u>	<u>Lt</u>	<u>L</u>	<u>Transmissible Torque</u>	<u>Quantity</u>
<u>PL048X070KE</u>	1.890 in	2.756 in	2.953 in	1.496 in	1.260 in	1025 ft·lb	1