



U.S. Tsubaki Power Transmission, LLC
 U.S. Tsubaki Holdings, Inc.
 Corporate Headquarters
 301 E. Marquardt Dr.
 Wheeling, IL 60090 USA

Toll Free: 800.323.7790

Phone: 847.459.9500

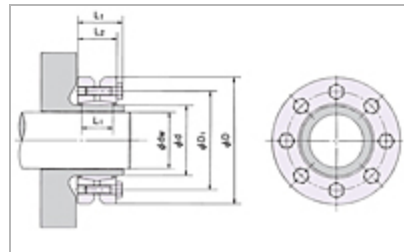
Fax: 847.459.9515

Email: sales@ustsubaki.com

Website: www.ustsubaki.com

POWER-LOCK SL SERIES KEYLESS LOCKING DEVICE

- External locking device for hollow shaft
- Ideal for applications with limited space
- Metric size range: 24mm - 300mm
- Black anodized coating for corrosion resistance



1 2 3 4

Item #	Shaft				Transmissible Torque	Quantity	
	Diameter - dw	D1	L1	L2			
PL024X050 SL 0.748	0.748 in	1.417 in	0.551 in	0.768 in	0.906 in	151 ft·lb	1

<u>Item #</u>	<u>Shaft Diameter - dw</u>	<u>D1</u>	<u>L1</u>	<u>L2</u>	<u>Lt</u>	<u>Transmissible Torque</u>	<u>Quantity</u>
<u>PL075X138</u> <u>SL 2.559</u>	0.787 in	1.417 in	0.551 in	0.768 in	0.906 in	123 ft·lb	1
<u>PL175X300</u> <u>SL 5.118</u>	0.827 in	1.417 in	0.551 in	0.768 in	0.906 in	179 ft·lb	1
<u>PL024X050</u> <u>SL 0.787</u>	0.945 in	1.732 in	0.630 in	0.846 in	0.984 in	189 ft·lb	1
<u>PL080X145</u> <u>SL 2.362</u>	0.984 in	1.732 in	0.630 in	0.846 in	0.984 in	219 ft·lb	1
<u>PL175X300</u> <u>SL 5.315</u>	1.024 in	1.732 in	0.630 in	0.846 in	0.984 in	251 ft·lb	1
<u>PL024X050</u> <u>SL 0.827</u>	1.102 in	2.047 in	0.709 in	0.925 in	1.083 in	420 ft·lb	1
<u>PL080X145</u> <u>SL 2.559</u>	1.181 in	2.047 in	0.709 in	0.925 in	1.083 in	339 ft·lb	1
<u>PL185X330</u> <u>SL 5.315</u>	1.220 in	2.047 in	0.709 in	0.925 in	1.083 in	442 ft·lb	1
<u>PL030X060</u> <u>SL 0.945</u>	1.339 in	2.402 in	0.787 in	1.004 in	1.161 in	578 ft·lb	1
<u>PL080X145</u> <u>SL 2.756</u>	1.378 in	2.402 in	0.787 in	1.004 in	1.161 in	632 ft·lb	1
<u>PL185X330</u> <u>SL 5.512</u>	1.417 in	2.402 in	0.787 in	1.004 in	1.161 in	689 ft·lb	1

<u>Item #</u>	<u>Shaft Diameter - dw</u>	<u>D1</u>	<u>L1</u>	<u>L2</u>	<u>Lt</u>	<u>Transmissible Torque</u>	<u>Quantity</u>
<u>PL030X060</u> <u>SL 0.984</u>	1.496 in	2.756 in	0.866 in	1.083 in	1.240 in	870 ft•lb	1
<u>PL090X155</u> <u>SL 2.559</u>	1.575 in	2.756 in	0.866 in	1.083 in	1.240 in	1003 ft•lb	1
<u>PL185X330</u> <u>SL 5.709</u>	1.654 in	2.756 in	0.866 in	1.083 in	1.240 in	745 ft•lb	1
<u>PL030X060</u> <u>SL 1.024</u>	1.654 in	2.953 in	0.906 in	1.201 in	1.358 in	826 ft•lb	1
<u>PL090X155</u> <u>SL 2.756</u>	1.772 in	2.953 in	0.906 in	1.201 in	1.358 in	1239 ft•lb	1
<u>PL195X350</u> <u>SL 5.512</u>	1.890 in	2.953 in	0.906 in	1.201 in	1.358 in	102 ft•lb	1
<u>PL036X072</u> <u>SL 1.102</u>	1.890 in	3.386 in	0.906 in	1.201 in	1.358 in	1365 ft•lb	1
<u>PL090X155</u> <u>SL 2.953</u>	1.969 in	3.386 in	0.906 in	1.201 in	1.358 in	1534 ft•lb	1
<u>PL195X350</u> <u>SL 5.906</u>	2.047 in	3.386 in	0.906 in	1.201 in	1.358 in	1637 ft•lb	1
<u>PL036X072</u> <u>SL 1.181</u>	1.969 in	3.386 in	0.906 in	1.201 in	1.358 in	1313 ft•lb	1
<u>PL100X170</u> <u>SL 2.756</u>	2.165 in	3.386 in	0.906 in	1.201 in	1.358 in	1645 ft•lb	1

<u>Item #</u>	<u>Shaft Diameter - dw</u>	<u>D1</u>	<u>L1</u>	<u>L2</u>	<u>Lt</u>	<u>Transmissible Torque</u>	<u>Quantity</u>
<u>PL195X350</u> <u>SL 6.102</u>	2.362 in	3.386 in	0.906 in	1.201 in	1.358 in	2117 ft·lb	1
<u>PL036X072</u> <u>SL 1.22</u>	2.165 in	3.937 in	0.984 in	1.280 in	1.496 in	1910 ft·lb	1

1 2 3 4