

U.S. Tsubaki Power Transmission, LLC  
 U.S. Tsubaki Holdings, Inc.  
 Corporate Headquarters  
 301 E. Marquardt Dr.  
 Wheeling, IL 60090 USA

Toll Free: 800.323.7790  
 Phone: 847.459.9500  
 Fax: 847.459.9515  
 Email: [sales@ustsubaki.com](mailto:sales@ustsubaki.com)  
 Website: [www.ustsubaki.com](http://www.ustsubaki.com)

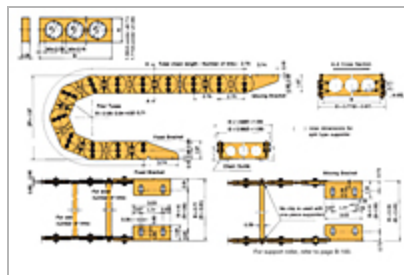
## TK070 CABLEVEYOR

### Construction and Features

Pitch 2.760 in

TK Cableveyor is constructed of steel chain with aluminum supporters to give high strength and durability for diverse applications. The holes of the

[+ more](#)



1 2 3

<u>Item #</u>	<u>Pitch</u>	<u>R - Bending Radius</u>	<u>Cabel/Hose Maximum Outer Diameter</u>	<u>A - Dimension</u>	<u>B - Dimension</u>	<u>U - Dimension</u>	<u>Quantit</u>
---------------	--------------	---------------------------	--	----------------------	----------------------	----------------------	----------------

TK070-

<u>Item #</u>	<u>Pitch</u>	<u>R - Bending Radius</u>	<u>Cabel/Hose Maximum Outer Diameter</u>	<u>A - Dimension</u>	<u>B - Dimension</u>	<u>U - Dimension</u>	<u>Quantit</u>
<u>2.95- 0.71- 2.36</u>	2.760 in	2.950 in	0.710 in	1.380 in	3.150 in	0.390 in	1
<u>TK070- 2.95- 0.71- 3.15</u>	2.760 in	2.950 in	0.710 in	1.380 in	3.150 in	0.390 in	1
<u>TK070- 2.95- 0.71- 3.94</u>	2.760 in	2.950 in	0.710 in	1.380 in	3.940 in	0.390 in	1
<u>TK070- 2.95- 0.71- 4.92</u>	2.760 in	2.950 in	0.710 in	1.380 in	4.920 in	0.390 in	1
<u>TK070- 2.95- 0.71- 5.91</u>	2.760 in	2.950 in	0.710 in	1.380 in	5.910 in	0.390 in	1
<u>TK070- 2.95- 0.71- 7.87</u>	2.760 in	2.950 in	0.710 in	1.380 in	7.870 in	0.390 in	1
<u>TK070-</u>							

<u>Item #</u>	<u>Pitch</u>	<u>R - Bending Radius</u>	<u>Cabel/Hose Maximum Outer Diameter</u>	<u>A - Dimension</u>	<u>B - Dimension</u>	<u>U - Dimension</u>	<u>Quantit</u>
<u>2.95- 0.71- 9.84</u>	2.760 in	2.950 in	0.710 in	1.380 in	9.840 in	0.390 in	1
<u>TK070- 2.95- 1.06- 2.36</u>	2.760 in	2.950 in	1.600 in	1.770 in	2.360 in	0.390 in	1
<u>TK070- 2.95- 1.06- 3.15</u>	2.760 in	2.950 in	1.600 in	1.770 in	3.150 in	0.390 in	1
<u>TK070- 2.95- 1.06- 3.94</u>	2.760 in	2.950 in	1.600 in	1.770 in	3.940 in	0.390 in	1
<u>TK070- 2.95- 1.06- 4.92</u>	2.760 in	2.950 in	1.600 in	1.770 in	4.920 in	0.390 in	1
<u>TK070- 2.95- 1.06- 5.91</u>	2.760 in	2.950 in	1.600 in	1.770 in	5.910 in	0.390 in	1
<u>TK070-</u>							

<u>Item #</u>	<u>Pitch</u>	<u>R - Bending Radius</u>	<u>Cabel/Hose Maximum Outer Diameter</u>	<u>A - Dimension</u>	<u>B - Dimension</u>	<u>U - Dimension</u>	<u>Quantit</u>
<u>2.95- 1.06- 7.87</u>	2.760 in	2.950 in	1.600 in	1.770 in	7.870 in	0.390 in	1
<u>TK070- 2.95- 1.06- 9.84</u>	2.760 in	2.950 in	1.600 in	1.770 in	9.840 in	0.390 in	1
<u>TK070- 2.95- 1.06- 11.81</u>	2.760 in	2.950 in	1.600 in	1.770 in	11.810 in	0.390 in	1
<u>TK070- 2.95- 1.06- 13.78</u>	2.760 in	2.950 in	1.600 in	1.770 in	13.780 in	0.390 in	1
<u>TK070- 3.54- 0.71- 2.36</u>	2.760 in	3.540 in	0.710 in	1.380 in	2.360 in	0.390 in	1
<u>TK070- 3.54- 0.71- 3.15</u>	2.760 in	3.540 in	0.710 in	1.380 in	3.150 in	0.390 in	1
<u>TK070-</u>							

<u>Item #</u>	<u>Pitch</u>	<u>R - Bending Radius</u>	<u>Cabel/Hose Maximum Outer Diameter</u>	<u>A - Dimension</u>	<u>B - Dimension</u>	<u>U - Dimension</u>	<u>Quantit</u>
<u>3.54- 0.71- 3.94</u>	2.760 in	3.540 in	0.710 in	1.380 in	3.940 in	0.390 in	1
<u>TK070- 3.54- 0.71- 4.92</u>	2.760 in	3.540 in	0.710 in	1.380 in	4.920 in	0.390 in	1
<u>TK070- 3.54- 0.71- 5.91</u>	2.760 in	3.540 in	0.710 in	1.380 in	5.910 in	0.390 in	1
<u>TK070- 3.54- 0.71- 7.87</u>	2.760 in	3.540 in	0.710 in	1.380 in	7.870 in	0.390 in	1
<u>TK070- 3.54- 0.71- 9.84</u>	2.760 in	3.540 in	0.710 in	1.380 in	9.840 in	0.390 in	1
<u>TK070- 3.54- 1.06- 2.36</u>	2.760 in	3.540 in	1.600 in	1.770 in	2.360 in	0.390 in	1
<u>TK070-</u>							

<u>Item #</u>	<u>Pitch</u>	<u>R - Bending Radius</u>	<u>Cabel/Hose Maximum Outer Diameter</u>	<u>A - Dimension</u>	<u>B - Dimension</u>	<u>U - Dimension</u>	<u>Quantit</u>
<u>3.54- 1.06- 3.15</u>	2.760 in	3.540 in	1.600 in	1.770 in	3.150 in	0.390 in	1