

U.S. Tsubaki Power Transmission, LLC
 U.S. Tsubaki Holdings, Inc.
 Corporate Headquarters
 301 E. Marquardt Dr.
 Wheeling, IL 60090 USA

Toll Free: 800.323.7790

Phone: 847.459.9500

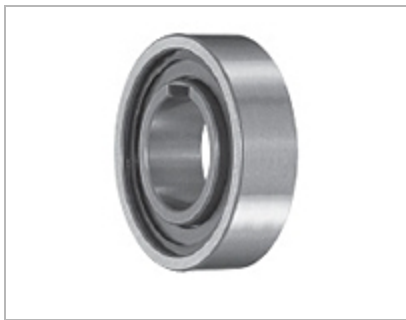
Fax: 847.459.9515

Email: sales@ustsubaki.com

Website: www.ustsubaki.com

TSS SERIES CAM CLUTCH

TSS Series Cam Clutch is designed for press fit installation with outside dimensions the same as the 62 Series ball bearing. As a sprag clutch, higher torque capacities are often higher than a [+ more](#)



1

<u>Item #</u>	<u>Bore Size</u>	<u>Torque Capacity</u>	<u>Max. Overrunning Inner Race</u>	<u>Max. Overrunning Outer Race</u>	<u>Drag Torque</u>	<u>Keyway</u>	<u>Quantity</u>
<u>TSS 8</u>	0.315 in 8.00 mm	4.9 lb•ft 6.7 N•m	6000 rpm	3000 rpm	0.004 lb•ft 0.01 N•m	2 x 1.0 mm	1
	0.394				0.005		

<u>Item #</u>	<u>Bore Size</u>	<u>Torque Capacity</u>	<u>Max. Overrunning Inner Race</u>	<u>Max. Overrunning Outer Race</u>	<u>Drag Torque</u>	<u>Keyway</u>	<u>Quantity</u>
<u>TSS10</u>	in 10.00 mm	8.9 lb•ft 12.0 N•m	4500 rpm	2300 rpm	lb•ft 0.01 N•m	3 x 1.4 mm	1
<u>TSS12</u>	0.472 in 12.00 mm	12.5 lb•ft 17.0 N•m	4000 rpm	2000 rpm	0.007 lb•ft 0.01 N•m	4 x 1.8 mm	1
<u>TSS15</u>	0.591 in 15.00 mm	16.2 lb•ft 22.0 N•m	3500 rpm	1800 rpm	0.007 lb•ft 0.01 N•m	5 x 1.2 mm	1
<u>TSS20</u>	0.787 in 20.00 mm	30.2 lb•ft 41.0 N•m	2600 rpm	1300 rpm	0.007 lb•ft 0.01 N•m	6 x 1.6 mm	1
<u>TSS25</u>	0.984 in 25.00 mm	41.3 lb•ft 56.0 N•m	2200 rpm	1100 rpm	0.015 lb•ft 0.02 N•m	8 x 2.0 mm	1
<u>TSS30</u>	1.181 in 30.00 mm	77.4 lb•ft 105.0 N•m	1800 rpm	900 rpm	0.022 lb•ft 0.03 N•m	8 x 2.0 mm	1
<u>TSS35</u>	1.378 in 35.00	100.3 lb•ft 136.0	1600 rpm	800 rpm	0.022 lb•ft 0.03	10 x 2.4 mm	1

<u>Item #</u>	<u>Bore Size</u>	<u>Torque Capacity</u>	<u>Max. Overrunning Inner Race</u>	<u>Max. Overrunning Outer Race</u>	<u>Drag Torque</u>	<u>Keyway</u>	<u>Quantity</u>
	mm	N•m			N•m		
<u>TSS40</u>	1.575 in 40.00 mm	218.3 lb•ft 296.0 N•m	1400 rpm	700 rpm	0.133 lb•ft 0.18 N•m	12 x 2.2 mm	1
<u>TSS45</u>	1.772 in 45.00 mm	255.9 lb•ft 347.0 N•m	1300 rpm	650 rpm	0.155 lb•ft 0.21 N•m	14 x 2.1 mm	1
<u>TSS50</u>	1.969 in 50.00 mm	297.2 lb•ft 403.0 N•m	1200 rpm	600 rpm	0.162 lb•ft 0.22 N•m	14 x 2.1 mm	1
<u>TSS60</u>	2.362 in 60.00 mm	478.7 lb•ft 649.0 N•m	910 rpm	460 rpm	0.243 lb•ft 0.33 N•m	18 x 2.3 mm	1