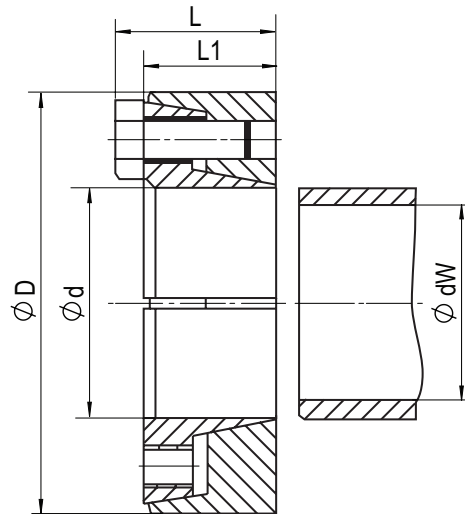
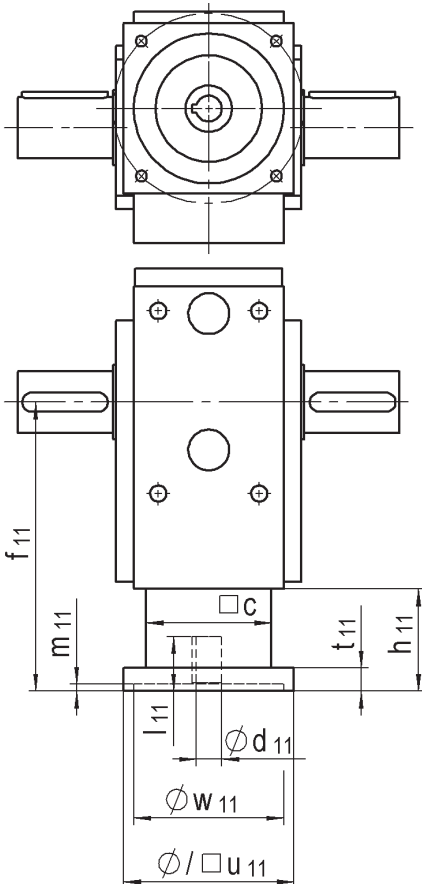


Shrink Discs - For use with 1LSV/3LSV Hollow Shaft Configurations



Frame Size	Shrink Disc Model	Ød	Ødw	ØD	L	L1	Torque (Nm)	Screw Size	Mass (kg)
10	KBS 19/1 - 30x60	30	25	60	24	20	352	M6	0.3
20	KBS 19/1 - 36x72	36	30	72	27.3	22	714	M8	0.5
30	KBS 19/1 - 50x90	50	40	90	31.3	26	1490	M8	0.8
35	KBS 19/1 - 62x110	62	50	110	34.3	29	2230	M8	1.4
40	KBS 19/1 - 68x115	68	60	115	34.3	29	3590	M8	1.4
50	KBS 19/1 - 80x145	80	70	145	37.4	31	5400	M10	2.5
60	Contact Us	-	-	-	-	-	-	-	-
70	Contact Us	-	-	-	-	-	-	-	-

Keyed Input Shaft Option



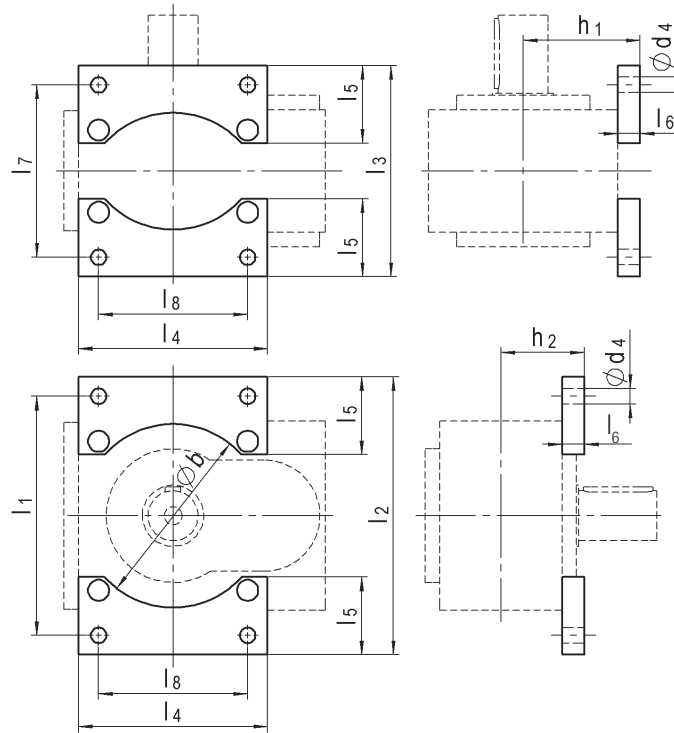
Motor Adapter Flange & Input Keyway Dimensions

Frame Size	Ød11 x l11			f11	h11	t11	c	m1
10	9x23	11x26	14x33	155	62.5	15	70	5
20	11x26	14x33	19x43	175	65	15	80	5
30	14x33	19x43	24x53	212	75	17	90	5
35	19x43	24x53	32x63	270	100	20	105	5
40	24x53	32x63	38x83	322	120	22	130	6
50	32x63	38x83	42x115	397	154	45	135	6
60	38x83	42x115	48x115	454	159	45	145	6
70	42x115	48x115	55x115	527	167	45	170	6

*Above Motor Adapter Flange & Input Keyway Dimensions are for reference only and depend on motor dimensions. Contact us to configure the appropriate adaptation for your specific motor

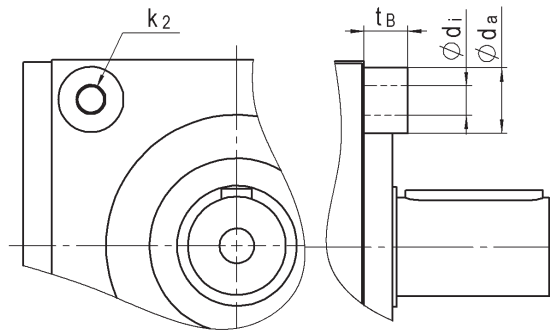
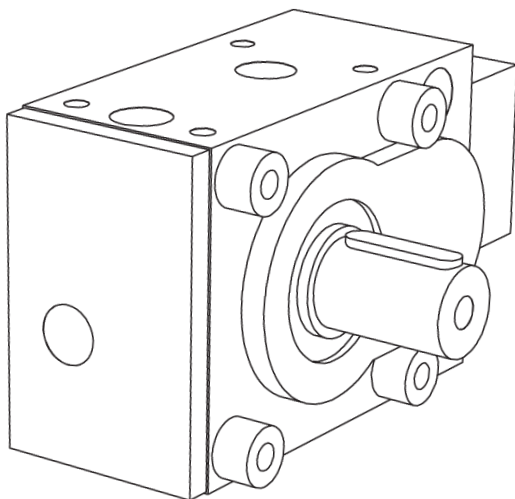
*In lieu of standard coupling mounting system

Base Mounted Feet



Frame Size	l1	l2	l3	l4	l5	l6	l7	l8	Øb	h1	h2	Ød4
10	146	168	136	110	50	17	114	88	108	72	54.4	9
20	178	208	158	140	60	20	128	110	135	90	65	11
30	215	250	190	170	70	20	155	134	165	105	75	14
35	265	310	240	210	90	25	195	170	205	130	95	18
40	295	345	275	240	100	30	225	190	235	150	115	18
50	335	385	315	280	100	30	265	220	275	170	135	18
60	430	480	360	360	125	30	310	280	350	210	150	22
70	520	580	410	450	140	30	350	350	440	255	170	22

Space Sleeves for Tapped Holes



Frame Size	k2	di	da	tB
10	M8	9	20	15
20	M10	11	25	20
30	M12	13,5	30	20
35	M16	17,5	35	25
40	M16	17,5	35	25
50	M16	17,5	35	25
60	M20	22	45	30
70	M20	22	45	30

*Usable height of thread 1.5 x thread size