



# **BELTING SPECS AND SPLICING INSTRUCTIONS**

## **Power Transmission (PT) Range**

**Universal Belting Resource**

**Phone: 800-928-9995**

**Email: [Customers@Ubelting.com](mailto:Customers@Ubelting.com)**

**Address: 2 Industrial Park Rd., Carmichaels PA 15320**

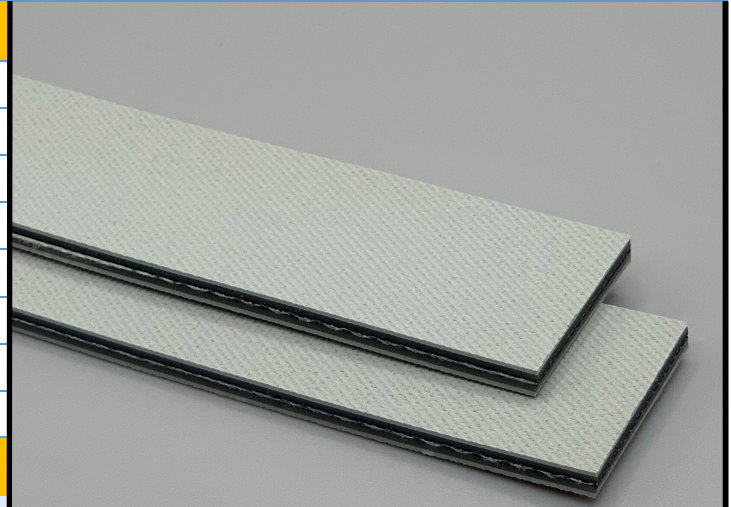
**351000**

**BF 30E Gray**

**PT**

**Material Construction**

Surface	Conveying	Material	G Elastomer
		Profile	Normal Texture
		Color	Gray
Member	Tension	Material	Polyester Fabric
		Plies	1
Underside		Material	G Elastomer
		Profile	Normal Texture
		Color	Gray



**Technical Specifications**

Overall thickness	3.00 mm	0.118 in.
Weight	3.40 kg/m <sup>2</sup>	0.70 lbf/ft <sup>2</sup>
Maximum width	500 mm	19.625 in.
Minimum pulley/Back flex	30 mm	1.18 in.
Diameter for recommended endless splice		
Shaft Load FW at 1% Elongation & 180° Arc of Contact	20 N/mm	114.2 lbs./in.
Load for 1% Extension	10 N/mm	57.1 lbs./in.
Maximum Tensile Load	180 N/mm belt width	
Standard tension	0.3-2%	
Operational temperature range	-20/70°C	-4/158°F

**Features**

FDA	NO	Anti-Static	YES
USDA Meat and Poultry	NO	Flame Retardant	NO
USDA Dairy	NO	Cross Rigid	YES
Anti-Microbial	NO		

**Standard Splices**

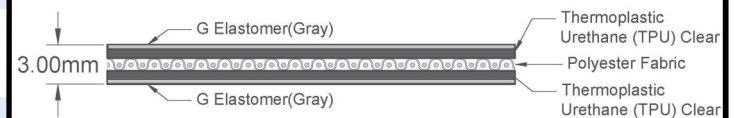
Endless	Single Finger
Clipper Lace	Not Recommended
Staple Lace	Not Recommended

**Notes**

Not sensitive to climatic fluctuation.  
Highly abrasion-resistant elastomer coating.

\*Minimum pulley diameters can vary when mechanical lace is installed. Contact our technical team for any fabrication or application questions.

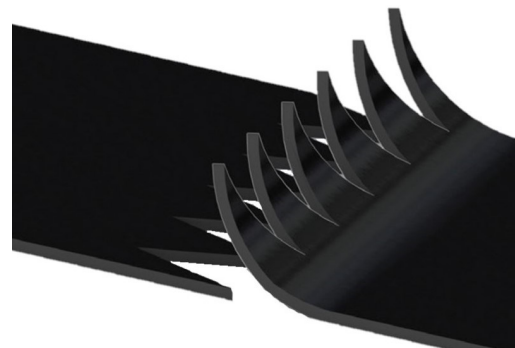
**Material Build**



**Splicing Instructions**

**Water Cooled Press Settings**

Pressure (psi)	Temperature		Press Time	Foil Position	Foil	Release Top/ Bot.
	Top	Bottom				
30	180°C 356°F	180°C 356°F	180s	N/A	None	Silicone/ Silicone



\*These settings are a guideline only, every press is different. Test splicing is recommended.

\*These settings can also be used as a guideline for quick splice presses, test splicing is still recommended.



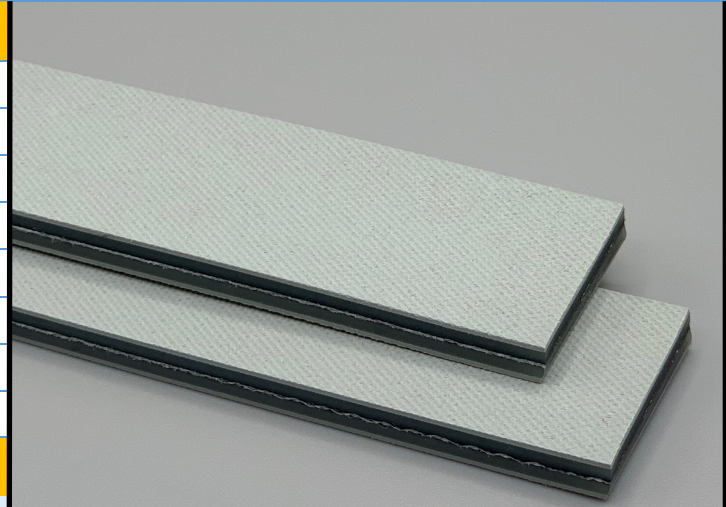
**351005**

**BF 40E Gray**

**PT**

**Material Construction**

Surface	Conveying	Material	G Elastomer
		Profile	Normal Texture
		Color	Gray
Member	Tension	Material	Polyester Fabric
		Plies	1
Underside		Material	G Elastomer
		Profile	Normal Texture
		Color	Gray



**Technical Specifications**

Overall thickness	4.00 mm	0.157 in.
Weight	4.30 kg/m <sup>2</sup>	0.88 lbf/ft <sup>2</sup>
Maximum width	500 mm	19.625 in.
Minimum pulley/Back flex	40 mm	1.58 in.
Diameter for recommended endless splice		
Shaft Load FW at 1% Elongation & 180° Arc of Contact	20 N/mm	114.2 lbs./in.
Load for 1% Extension	10 N/mm	57.1 lbs./in.
Maximum Tensile Load	180 N/mm belt width	
Standard tension	0.3-2%	
Operational temperature range	-20/70°C	-4/158°F

**Features**

FDA	NO	Anti-Static	YES
USDA Meat and Poultry	NO	Flame Retardant	NO
USDA Dairy	NO	Cross Rigid	YES
Anti-Microbial	NO		

**Standard Splices**

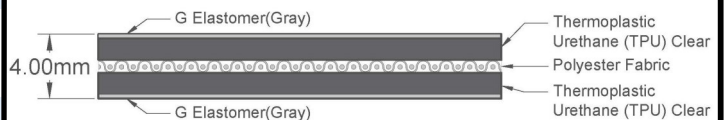
Endless	Single Finger
Clipper Lace	Not Recommended
Staple Lace	Not Recommended

**Notes**

Not sensitive to climatic fluctuation.  
Highly abrasion-resistant elastomer coating.

\*Minimum pulley diameters can vary when mechanical lace is installed. Contact our technical team for any fabrication or application questions.

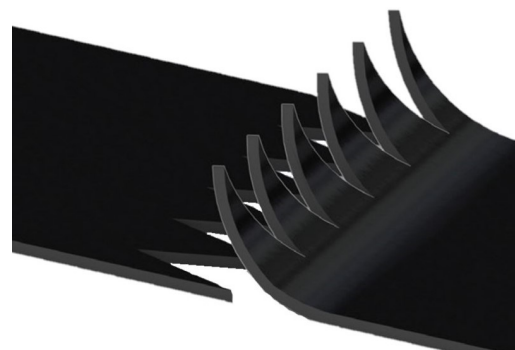
**Material Build**



**Splicing Instructions**

**Water Cooled Press Settings**

Pressure (psi)	Temperature		Press Time	Foil Position	Foil	Release Top/ Bot.
	Top	Bottom				
30	180°C 356°F	180°C 356°F	240s	N/A	None	Silicone/ Silicone



\*These settings are a guideline only, every press is different. Test splicing is recommended.

\*These settings can also be used as a guideline for quick splice presses, test splicing is still recommended.



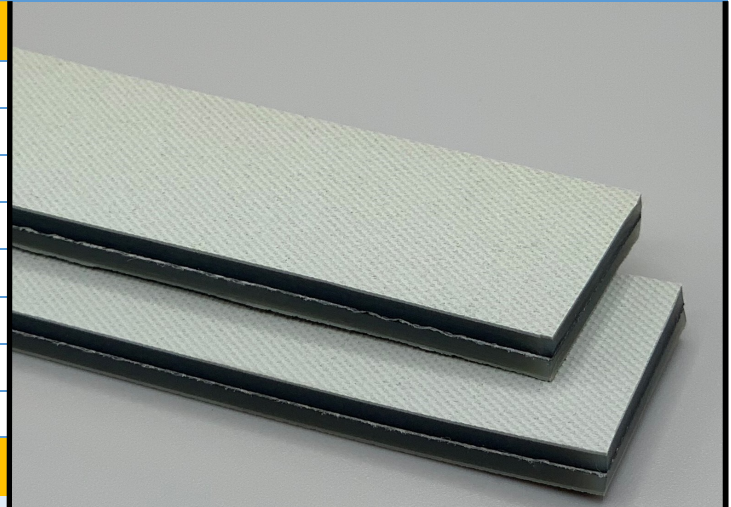
**351010**

**BF 50E Gray**

**PT**

**Material Construction**

Surface	Conveying	Material	G Elastomer
		Profile	Normal Texture
		Color	Gray
Member	Tension	Material	Polyester Fabric
		Plies	1
Underside		Material	G Elastomer
		Profile	Normal Texture
		Color	Gray



**Technical Specifications**

Overall thickness	5.00 mm	0.197 in.
Weight	5.55 kg/m <sup>2</sup>	1.14 lbf/ft <sup>2</sup>
Maximum width	500 mm	19.625 in.
Minimum pulley/Back flex	50 mm	1.97 in.
Diameter for recommended endless splice		
Shaft Load FW at 1% Elongation & 180° Arc of Contact	20 N/mm	114.2 lbs./in.
Load for 1% Extension	10 N/mm	57.1 lbs./in.
Maximum Tensile Load	180 N/mm belt width	
Standard tension	0.3-2%	
Operational temperature range	-20/70°C	-4/158°F

**Features**

FDA	NO	Anti-Static	YES
USDA Meat and Poultry	NO	Flame Retardant	NO
USDA Dairy	NO	Cross Rigid	YES
Anti-Microbial	NO		

**Standard Splices**

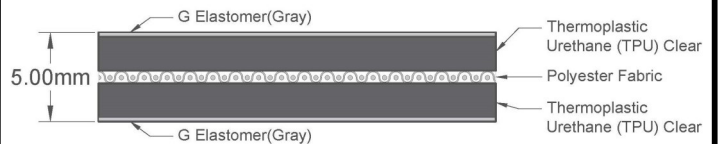
Endless	Single Finger
Clipper Lace	Not Recommended
Staple Lace	Not Recommended

**Notes**

Not sensitive to climatic fluctuation.  
Highly abrasion-resistant elastomer coating.

\*Minimum pulley diameters can vary when mechanical lace is installed. Contact our technical team for any fabrication or application questions.

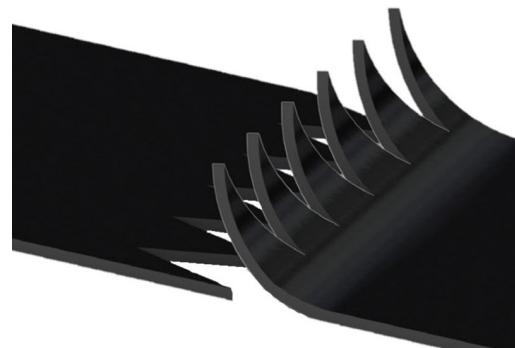
**Material Build**



**Splicing Instructions**

**Water Cooled Press Settings**

Pressure (psi)	Temperature		Press Time	Foil Position	Foil	Release Top/ Bot.
	Top	Bottom				
30	180°C 356°F	180°C 356°F	300s	N/A	None	Silicone/ Silicone



\*These settings are a guideline only, every press is different. Test splicing is recommended.

\*These settings can also be used as a guideline for quick splice presses, test splicing is still recommended.



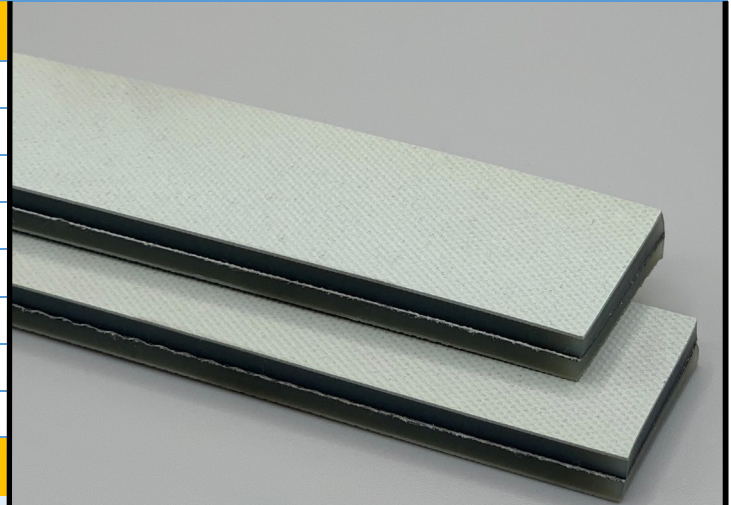
**351015**

**BF 60E Gray**

**PT**

**Material Construction**

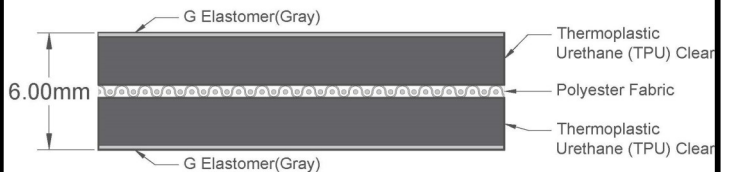
Surface	Conveying	Material	G Elastomer
		Profile	Normal Texture
		Color	Gray
Member	Tension	Material	Polyester Fabric
		Plies	1
Underside		Material	G Elastomer
		Profile	Normal Texture
		Color	Gray



**Technical Specifications**

Overall thickness	6.00 mm	0.236 in.
Weight	6.65 kg/m <sup>2</sup>	1.36 lbf/ft <sup>2</sup>
Maximum width	500 mm	19.625 in.
Minimum pulley/Back flex	70 mm	2.76 in.
Diameter for recommended endless splice		
Shaft Load FW at 1% Elongation & 180° Arc of Contact	20 N/mm	114.2 lbs./in.
Load for 1% Extension	10 N/mm	57.1 lbs./in.
Maximum Tensile Load	180 N/mm belt width	
Standard tension	0.3-2%	
Operational temperature range	-20/70°C	-4/158°F

**Material Build**



**Splicing Instructions**

**Water Cooled Press Settings**

Pressure (psi)	Temperature		Press Time	Foil Position	Foil	Release Top/ Bot.
	Top	Bottom				
30	180°C 356°F	180°C 356°F	300s	N/A	None	Silicone/ Silicone

**Features**

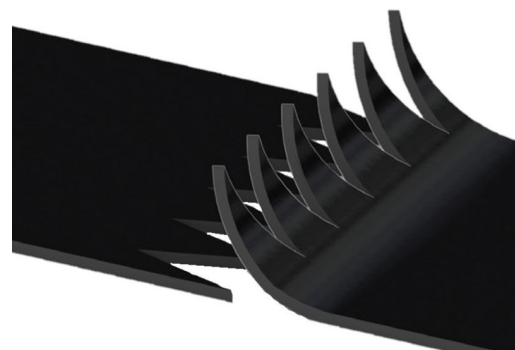
FDA	NO	Anti-Static	YES
USDA Meat and Poultry	NO	Flame Retardant	NO
USDA Dairy	NO	Cross Rigid	YES
Anti-Microbial	NO		

**Standard Splices**

Endless	Single Finger
Clipper Lace	Not Recommended
Staple Lace	Not Recommended

**Notes**

Not sensitive to climatic fluctuation.  
Highly abrasion-resistant elastomer coating.



\*These settings are a guideline only, every press is different. Test splicing is recommended.

\*These settings can also be used as a guideline for quick splice presses, test splicing is still recommended.



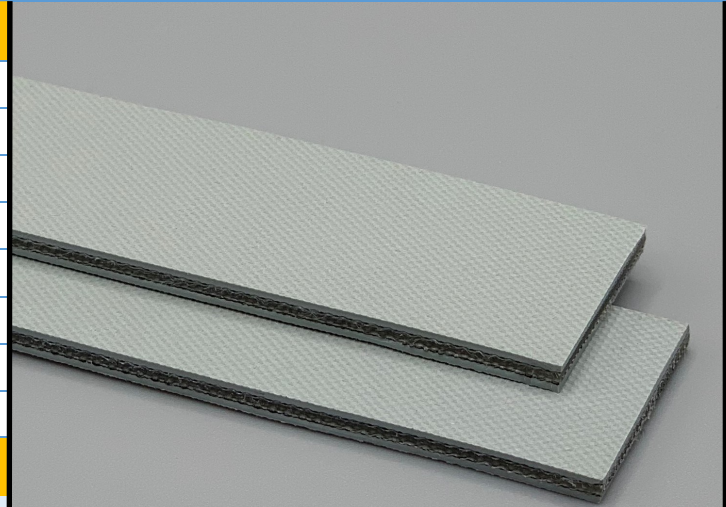
**351100**

**BF 30P Gray**

**PT**

**Material Construction**

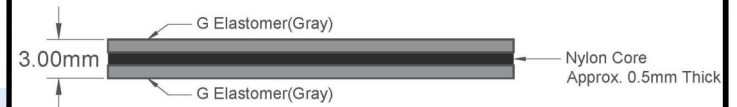
Conveying Surface	Material	G Elastomer
	Profile	Normal Texture
	Color	Gray
Tension Member	Material	Nylon
	Plies	1
Underside	Material	G Elastomer
	Profile	Normal Texture
	Color	Gray



**Technical Specifications**

Overall thickness	3.00 mm	0.118 in.
Weight	3.30 kg/m <sup>2</sup>	0.68 lbf/ft <sup>2</sup>
Maximum width	508 mm	20 in.
Minimum pulley/Back flex	30 mm	1.181 in.
Diameter for recommended endless splice		
Shaft Load FW at 1% Elongation & 180° Arc of Contact	10 N/mm	57.10 lbs./in.
Load for 1% Extension	5 N/mm	28.55 lbs./in.
Maximum Tensile Load	250 N/mm belt width	
Standard tension	1.5-3%	
Operational temperature range	-20/80°C	-4/176°F

**Material Build**



**Features**

FDA	NO	Anti-Static	YES
USDA Meat and Poultry	NO	Flame Retardant	NO
USDA Dairy	NO	Cross Rigid	YES
Anti-Microbial	NO		

**Splicing Instructions**

**Standard Nylon Core Press Settings**

Pressure (psi)	Temperature		Press Time	90° Grinding Length	60° Grinding Length
	Top	Bottom			
30	110°C 230°F	110°C 230°F	25 min	2.625"	3"
K2000 Adhesive on Polyamide Surface AF Adhesive for elastomer G (Rubber)				Silicone Release on top and bottom	

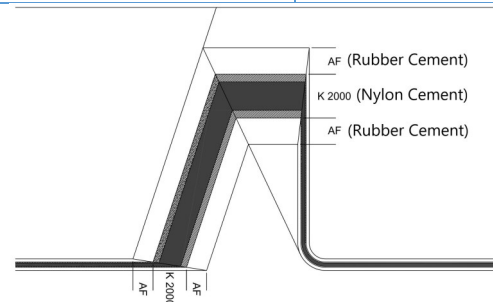
**Standard Splices**

Endless	Skived
Clipper Lace	Not Recommended
Staple Lace	Not Recommended

**Notes**

Storage at normal temperature conditions of 23°C/73°F - 50% humidity recommended. Changes in the dimensions possible when conditions do not apply.  
Good damping properties.

\*Minimum pulley diameters can vary when mechanical lace is installed. Contact our technical team for any fabrication or application questions.



\*These settings are a guideline only, every press is different. Test splicing is recommended.

\*Minimum pulley diameters can vary when mechanical lace is installed. Contact our technical team for any fabrication or application questions.



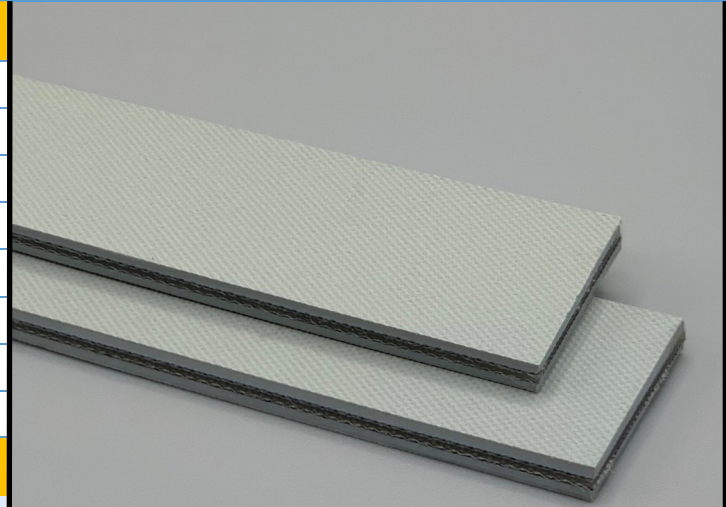
**351105**

**BF 40P Gray**

**PT**

**Material Construction**

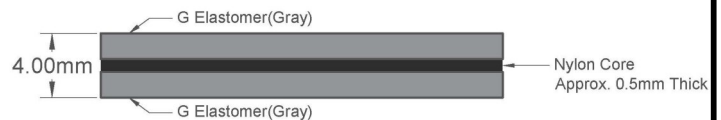
Surface	Conveying	Material	G Elastomer
		Profile	Normal Texture
		Color	Gray
Member	Tension	Material	Nylon
		Plies	1
Underside		Material	G Elastomer
		Profile	Normal Texture
		Color	Gray



**Technical Specifications**

Overall thickness	4.00 mm	0.157 in.
Weight	4.30 kg/m <sup>2</sup>	0.88 lbf/ft <sup>2</sup>
Maximum width	508 mm	20 in.
Minimum pulley/Back flex	40 mm	1.575 in.
Diameter for recommended endless splice		
Shaft Load FW at 1% Elongation & 180° Arc of Contact	10 N/mm	57.10 lbs./in.
Load for 1% Extension	5 N/mm	28.55 lbs./in.
Maximum Tensile Load	250 N/mm belt width	
Standard tension	1.5-3%	
Operational temperature range	-20/80°C	-4/176°F

**Material Build**



**Features**

FDA	NO	Anti-Static	YES
USDA Meat and Poultry	NO	Flame Retardant	NO
USDA Dairy	NO	Cross Rigid	YES
Anti-Microbial	NO		

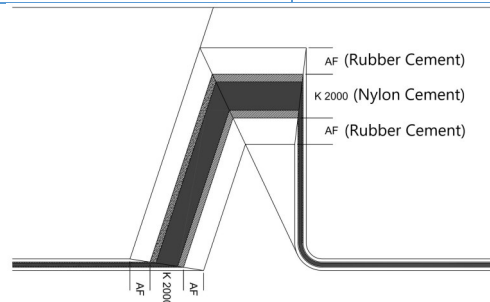
**Splicing Instructions**

**Standard Nylon Core Press Settings**

Pressure (psi)	Temperature		Press Time	90° Grinding Length	60° Grinding Length
	Top	Bottom			
30	110°C 230°F	110°C 230°F	30 min	3.5"	4"
K2000 Adhesive on Polyamide Surface AF Adhesive for elastomer G (Rubber)				Silicone Release on top and bottom	

**Standard Splices**

Endless	Skived
Clipper Lace	Not Recommended
Staple Lace	Not Recommended



\*These settings are a guideline only, every press is different. Test splicing is recommended.

\*Minimum pulley diameters can vary when mechanical lace is installed. Contact our technical team for any fabrication or application questions.

**Notes**

Storage at normal temperature conditions of 23°C/73°F - 50% humidity recommended. Changes in the dimensions possible when conditions do not apply.  
Good damping properties.

\*Minimum pulley diameters can vary when mechanical lace is installed. Contact our technical team for any fabrication or application questions.



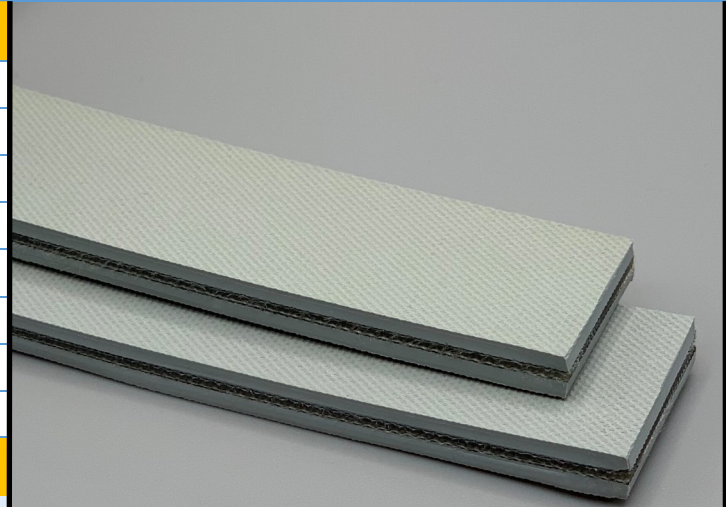
**351110**

**BF 50P Gray**

**PT**

**Material Construction**

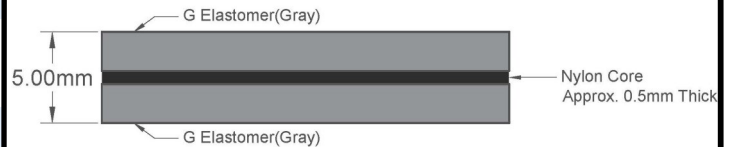
Conveying Surface	Material	G Elastomer
	Profile	Normal Texture
	Color	Gray
Tension Member	Material	Nylon
	Plies	1
Underside	Material	G Elastomer
	Profile	Normal Texture
	Color	Gray



**Technical Specifications**

Overall thickness	5.00 mm	0.197 in.
Weight	5.45 kg/m <sup>2</sup>	1.12 lbf/ft <sup>2</sup>
Maximum width	508 mm	20 in.
Minimum pulley/Back flex	50 mm	1.969 in.
Diameter for recommended endless splice		
Shaft Load FW at 1% Elongation & 180° Arc of Contact	10 N/mm	57.10 lbs./in.
Load for 1% Extension	5 N/mm	28.55 lbs./in.
Maximum Tensile Load	250 N/mm belt width	
Standard tension	1.5-3%	
Operational temperature range	-20/80°C	-4/176°F

**Material Build**



**Features**

FDA	NO	Anti-Static	YES
USDA Meat and Poultry	NO	Flame Retardant	NO
USDA Dairy	NO	Cross Rigid	YES
Anti-Microbial	NO		

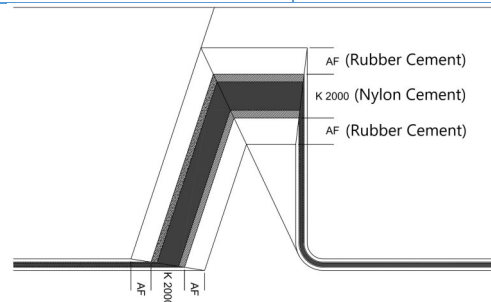
**Splicing Instructions**

**Standard Nylon Core Press Settings**

Pressure (psi)	Temperature		Press Time	90° Grinding Length	60° Grinding Length
	Top	Bottom			
30	110°C 230°F	110°C 230°F	35 min	4.375"	5"

K2000 Adhesive on Polyamide Surface  
AF Adhesive for elastomer G (Rubber)

Silicone Release on top and bottom



\*These settings are a guideline only, every press is different. Test splicing is recommended.

\*Minimum pulley diameters can vary when mechanical lace is installed. Contact our technical team for any fabrication or application questions.

**Standard Splices**

Endless	Skived
Clipper Lace	Not Recommended
Staple Lace	Not Recommended

**Notes**

Storage at normal temperature conditions of 23°C/73°F - 50% humidity recommended. Changes in the dimensions possible when conditions do not apply.  
Good damping properties.

\*Minimum pulley diameters can vary when mechanical lace is installed. Contact our technical team for any fabrication or application questions.





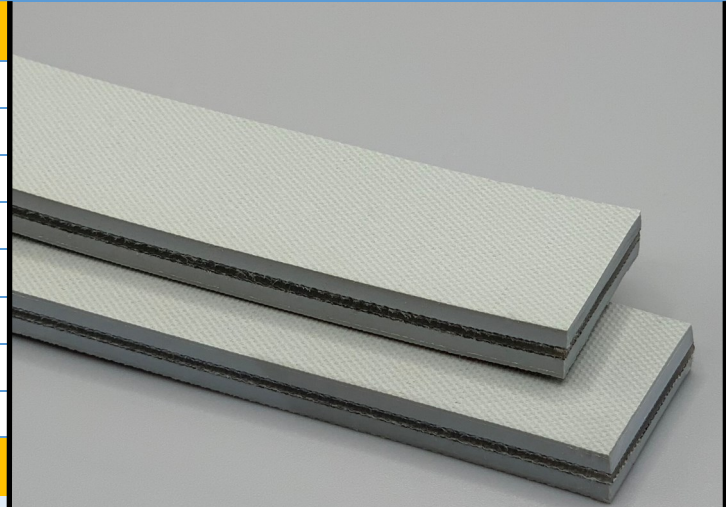
**351115**

**BF 60P Gray**

**PT**

**Material Construction**

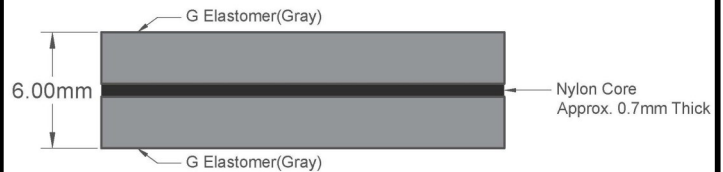
Conveying Surface	Material	G Elastomer
	Profile	Normal Texture
	Color	Gray
Tension Member	Material	Nylon
	Plies	1
Underside	Material	G Elastomer
	Profile	Normal Texture
	Color	Gray



**Technical Specifications**

Overall thickness	6.00 mm	0.236 in.
Weight	6.80 kg/m <sup>2</sup>	1.39 lbf/ft <sup>2</sup>
Maximum width	508 mm	20 in.
Minimum pulley/Back flex	60 mm	2.362 in.
Diameter for recommended endless splice		
Shaft Load FW at 1% Elongation & 180° Arc of Contact	14 N/mm	79.94 lbs./in.
Load for 1% Extension	7 N/mm	39.97 lbs./in.
Maximum Tensile Load	350 N/mm belt width	
Standard tension	1.5-3%	
Operational temperature range	-20/80°C	-4/176°F

**Material Build**



**Features**

FDA	NO	Anti-Static	YES
USDA Meat and Poultry	NO	Flame Retardant	NO
USDA Dairy	NO	Cross Rigid	YES
Anti-Microbial	NO		

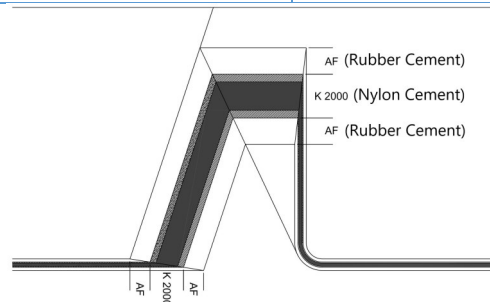
**Splicing Instructions**

**Standard Nylon Core Press Settings**

Pressure (psi)	Temperature		Press Time	90° Grinding Length	60° Grinding Length
	Top	Bottom			
30	110°C 230°F	110°C 230°F	40 min	5.25"	6"
K2000 Adhesive on Polyamide Surface AF Adhesive for elastomer G (Rubber)				Silicone Release on top and bottom	

**Standard Splices**

Endless	Skived
Clipper Lace	Not Recommended
Staple Lace	Not Recommended



**Notes**

Storage at normal temperature conditions of 23°C/73°F - 50% humidity recommended. Changes in the dimensions possible when conditions do not apply.  
Good damping properties.

\*These settings are a guideline only, every press is different. Test splicing is recommended.

\*Minimum pulley diameters can vary when mechanical lace is installed. Contact our technical team for any fabrication or application questions.



**351130**

**PT 32 P Black/Black**

**PT**

**Material Construction**

Surface	Conveying	Material	G Elastomer
		Profile	Normal Texture
		Color	Black
Member	Tension	Material	Nylon
		Plies	1
Underside		Material	G Elastomer
		Profile	Normal Texture
		Color	Black



**Technical Specifications**

Overall thickness	3.20 mm	0.126 in.
Weight	3.45 kg/m <sup>2</sup>	0.71 lbf/ft <sup>2</sup>
Maximum width	508 mm	20 in.
Minimum pulley/Back flex	90 mm	3.543 in.
Diameter for recommended endless splice		
Shaft Load FW at 1% Elongation & 180° Arc of Contact	28 N/mm	159.88 lbs./in.
Load for 1% Extension	14 N/mm	79.94 lbs./in.
Maximum Tensile Load	700 N/mm belt width	
Standard tension	1.5-3%	
Operational temperature range	-20/80°C	-4/176°F

**Features**

FDA	NO	Anti-Static	YES
USDA Meat and Poultry	NO	Flame Retardant	NO
USDA Dairy	NO	Cross Rigid	YES
Anti-Microbial	NO		

**Standard Splices**

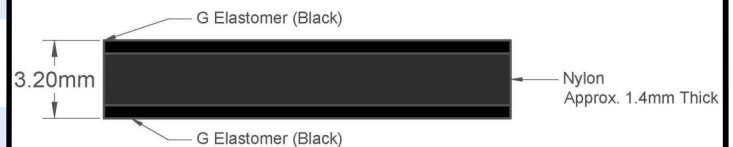
Endless	Skived
Clipper Lace	Not Recommended
Staple Lace	Not Recommended

**Notes**

Suitable for power transmission and spindle drives  
Storage at normal temperature conditions of 20°  
C/50% humidity recommended

\*Minimum pulley diameters can vary when mechanical lace is installed. Contact our technical team for any fabrication or application questions.

**Material Build**



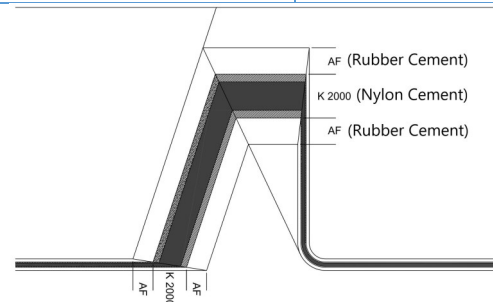
**Splicing Instructions**

**Standard Nylon Core Press Settings**

Pressure (psi)	Temperature		Press Time	90° Grinding Length	60° Grinding Length
	Top	Bottom			
30	110°C 230°F	110°C 230°F	25 min	3.25"	3.25"

K2000 Adhesive on Polyamide Surface  
AF Adhesive for elastomer G (Rubber)

Silicone Release on top and bottom



\*These settings are a guideline only, every press is different. Test splicing is recommended.

\*Minimum pulley diameters can vary when mechanical lace is installed. Contact our technical team for any fabrication or application questions.



**351133**

**PT 37 P Green/Black**

**PT**

**Material Construction**

Surface	Conveying	Material	Highly Abrasion Resistant Rubber
		Profile	Fine Top Texture
		Color	Black
Member	Tension	Material	Nylon
		Plies	1
Underside		Material	Highly Abrasion Resistant Rubber
		Profile	Fine Top Texture
		Color	Green



**Technical Specifications**

Overall thickness	3.70 mm	0.146 in.
Weight	4.00 kg/m <sup>2</sup>	0.82 lbf/ft <sup>2</sup>
Maximum width	508 mm	20 in.
Minimum pulley/Back flex		
Diameter for recommended endless splice	125 mm	4.921 in.
Shaft Load FW at 1% Elongation & 180° Arc of Contact	34 N/mm	194.14 lbs./in.
Load for 1% Extension	17 N/mm	97.07 lbs./in.
Maximum Tensile Load	850 N/mm belt width	
Standard tension	1.5-3%	
Operational temperature range	-20/80°C	-4/176°F

**Material Build**



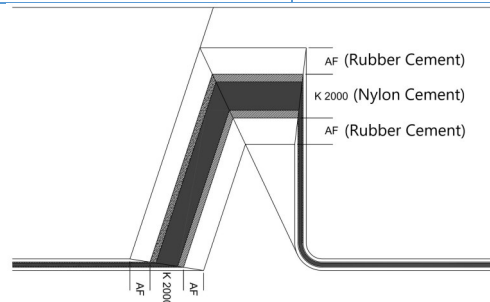
**Splicing Instructions**

**Standard Nylon Core Press Settings**

Pressure (psi)	Temperature		Press Time	90° Grinding Length	60° Grinding Length
	Top	Bottom			
30	110°C 230°F	110°C 230°F	30 min	3.719"	3.719"

K2000 Adhesive on Polyamide Surface  
AF Adhesive for elastomer G (Rubber)

Silicone Release on top and bottom



\*These settings are a guideline only, every press is different. Test splicing is recommended.

\*Minimum pulley diameters can vary when mechanical lace is installed. Contact our technical team for any fabrication or application questions.

**Features**

FDA	NO	Anti-Static	YES
USDA Meat and Poultry	NO	Flame Retardant	NO
USDA Dairy	NO	Cross Rigid	YES
Anti-Microbial	NO		

**Standard Splices**

Endless	Skived
Clipper Lace	Not Recommended
Staple Lace	Not Recommended

**Notes**

Suitable for power transmission and spindle drives (black side = spindle side)  
Storage at normal temperature conditions of 20°C/50% humidity recommended

\*Minimum pulley diameters can vary when mechanical lace is installed. Contact our technical team for any fabrication or application questions.



**351135**

**PT 21 P Green/Black**

**PT**

**Material Construction**

Surface	Conveying	Material	Highly Abrasion Resistant Rubber
		Profile	Fine Top Texture
		Color	Black
Member	Tension	Material	Nylon
		Plies	1
Underside		Material	Highly Abrasion Resistant Rubber
		Profile	Fine Top Texture
		Color	Green



**Technical Specifications**

Overall thickness	2.10 mm	0.083 in.
Weight	2.20 kg/m <sup>2</sup>	0.45 lbf/ft <sup>2</sup>
Maximum width	508 mm	20 in.
Minimum pulley/Back flex	30 mm	1.181 in.
Diameter for recommended endless splice		
Shaft Load FW at 1% Elongation & 180° Arc of Contact	15 N/mm	85.66 lbs./in.
Load for 1% Extension	7.5 N/mm	42.83 lbs./in.
Maximum Tensile Load	350 N/mm belt width	
Standard tension	1.5-3%	
Operational temperature range	-20/80°C	-4/176°F

**Material Build**



**Features**

FDA	NO	Anti-Static	YES
USDA Meat and Poultry	NO	Flame Retardant	NO
USDA Dairy	NO	Cross Rigid	YES
Anti-Microbial	NO		

**Splicing Instructions**

**Standard Nylon Core Press Settings**

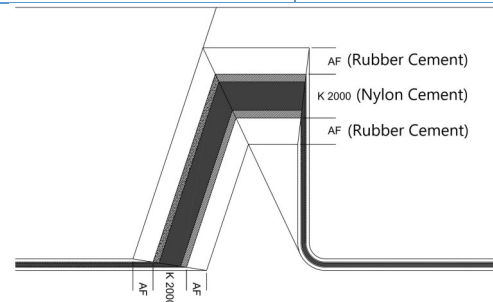
Pressure (psi)	Temperature		Press Time	90° Grinding Length	60° Grinding Length
	Top	Bottom			
30	110°C 230°F	110°C 230°F	20 min	3.25"	3.25"
K2000 Adhesive on Polyamide Surface AF Adhesive for elastomer G (Rubber)				Silicone Release on top and bottom	

**Standard Splices**

Endless	Skived
Clipper Lace	Not Recommended
Staple Lace	Not Recommended

**Notes**

Suitable for power transmission and spindle drives (black side = spindle side)  
Storage at normal temperature conditions of 20°C/50% humidity recommended



\*These settings are a guideline only, every press is different. Test splicing is recommended.

\*Minimum pulley diameters can vary when mechanical lace is installed. Contact our technical team for any fabrication or application questions.



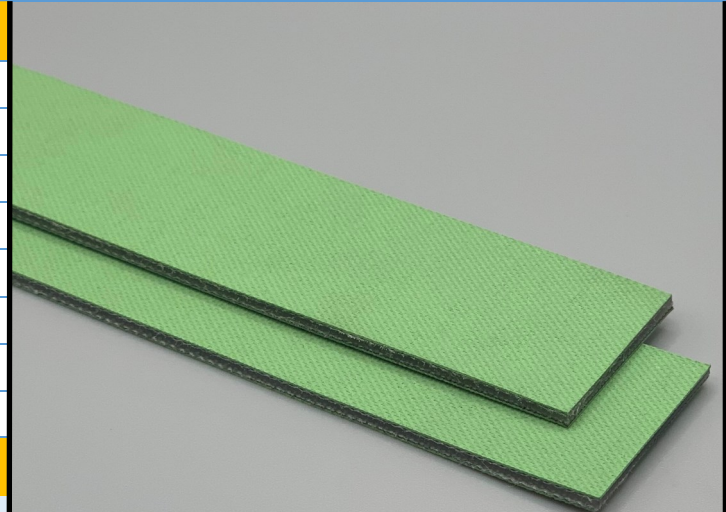
**351136**

**PT 20 P Green/Green**

**PT**

**Material Construction**

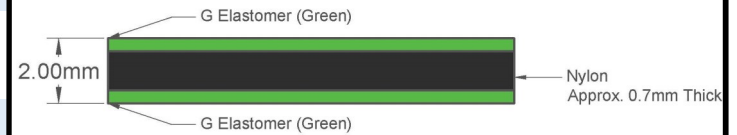
Surface	Conveying	Material	G Elastomer
		Profile	Fine Top Texture
		Color	Green
Member	Tension	Material	Nylon
		Plies	1
Underside		Material	G Elastomer
		Profile	Fine Top Texture
		Color	Green



**Technical Specifications**

Overall thickness	2.00 mm	0.079 in.
Weight	2.10 kg/m <sup>2</sup>	0.43 lbf/ft <sup>2</sup>
Maximum width	508 mm	20 in.
Minimum pulley/Back flex	30 mm	1.181 in.
Diameter for recommended endless splice		
Shaft Load FW at 1% Elongation & 180° Arc of Contact	14 N/mm	79.94 lbs./in.
Load for 1% Extension	7 N/mm	39.97 lbs./in.
Maximum Tensile Load	350 N/mm belt width	
Standard tension	1.5-3%	
Operational temperature range	-20/80°C	-4/176°F

**Material Build**



**Features**

FDA	NO	Anti-Static	YES
USDA Meat and Poultry	NO	Flame Retardant	NO
USDA Dairy	NO	Cross Rigid	YES
Anti-Microbial	NO		

**Splicing Instructions**

**Standard Nylon Core Press Settings**

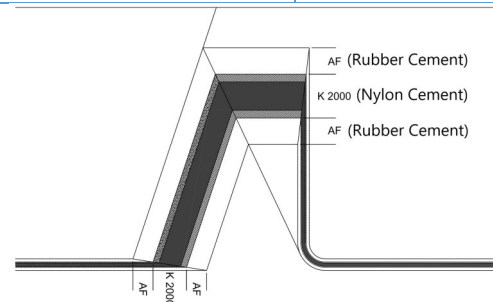
Pressure (psi)	Temperature		Press Time	90° Grinding Length	60° Grinding Length
	Top	Bottom			
30	110°C 230°F	110°C 230°F	20 min	3.25"	3.25"
K2000 Adhesive on Polyamide Surface AF Adhesive for elastomer G (Rubber)				Silicone Release on top and bottom	

**Standard Splices**

Endless	Skived
Clipper Lace	Not Recommended
Staple Lace	Not Recommended

**Notes**

Suitable for power transmission and spindle drives (black side = spindle side)  
Storage at normal temperature conditions of 20°C/50% humidity recommended



\*These settings are a guideline only, every press is different. Test splicing is recommended.

\*Minimum pulley diameters can vary when mechanical lace is installed. Contact our technical team for any fabrication or application questions.



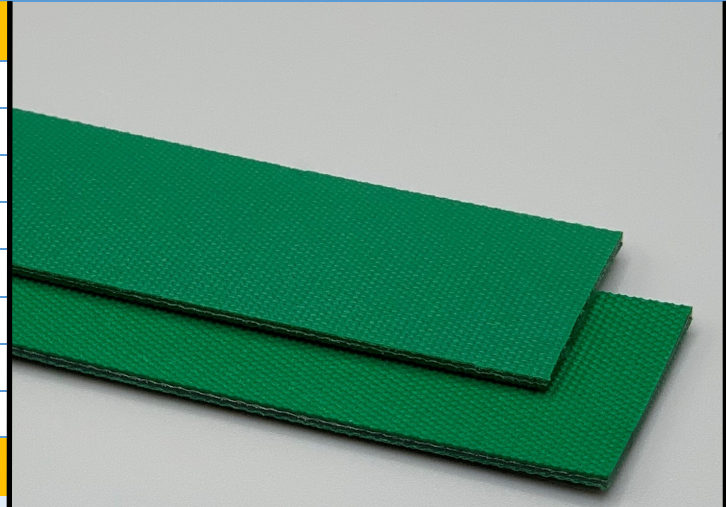
**351155**

**G5/0 XP Green**

**PT**

**Material Construction**

Conveying Surface	Material	G Elastomer
	Profile	Fabric Structured
	Color	Green
Tension Member	Material	Nylon
	Plies	1
Underside	Material	Impregnated Polyamide Fabric
	Profile	Fabric Texture
	Color	Green



**Technical Specifications**

Overall thickness	1.25 mm	0.049 in.
Weight	1.15 kg/m <sup>2</sup>	0.24 lbf/ft <sup>2</sup>
Maximum width	508 mm	20 in.
Minimum pulley/Back flex	24 mm	0.945 in.
Diameter for recommended endless splice		
Shaft Load FW at 1% Elongation & 180° Arc of Contact	6 N/mm	34.26 lbs./in.
Load for 1% Extension	3 N/mm	17.13 lbs./in.
Maximum Tensile Load	90 N/mm belt width	
Standard tension	0.6-3%	
Operational temperature range	-20/80°C	-4/176°F

**Material Build**



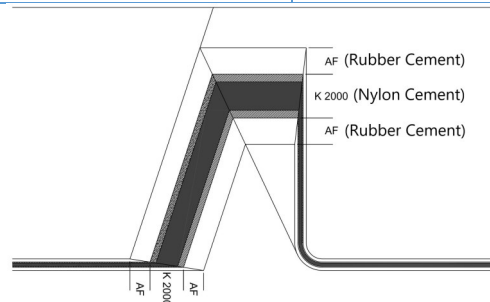
**Splicing Instructions**

**Standard Nylon Core Press Settings**

Pressure (psi)	Temperature		Press Time	90° Grinding Length	60° Grinding Length
	Top	Bottom			
30	110°C 230°F	110°C 230°F	10 min	0.945"	0.945"

K2000 Adhesive on Polyamide Surface  
AF Adhesive for elastomer G (Rubber)

Silicone Release on top and bottom



\*These settings are a guideline only, every press is different. Test splicing is recommended.

\*Minimum pulley diameters can vary when mechanical lace is installed. Contact our technical team for any fabrication or application questions.

**Features**

FDA	NO	Anti-Static	YES
USDA Meat and Poultry	NO	Flame Retardant	NO
USDA Dairy	NO	Cross Rigid	YES
Anti-Microbial	NO		

**Standard Splices**

Endless	Skived
Clipper Lace	Not Recommended
Staple Lace	Not Recommended

**Notes**

Suitable for paper transport, light weight power transmission, and various specialty applications. Storage at normal temperature conditions of 23° C/50% Humidity recommended.

\*Minimum pulley diameters can vary when mechanical lace is installed. Contact our technical team for any fabrication or application questions.

