



BELTING SPECS AND SPLICING INSTRUCTIONS

Monolithic (PURclean) Range

Universal Belting Resource

Phone: 800-928-9995

Email: Customers@Ubelting.com

Address: 2 Industrial Park Rd., Carmichaels PA 15320



UNIVERSAL BELTING RESOURCE

Industrial Lightweight Belting

1-800-928-9995

Customers@Ubelting.com

Product Data Sheet

450050

FB1WHSS Matt White 90

PURclean

Material Construction

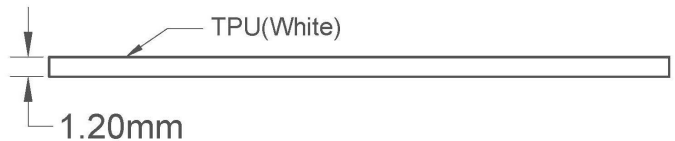
Composition	Material	TPU-Thermoplastic Polyurethane
	Color	White
	Hardness (Shore "A")	90
	Tension Member	TPU Non-Reinforced
Surface Feature	Top	Matt
	Bottom	Matt
COF	Top	0.38
	Bottom	0.38



Technical Specifications

Overall Thickness	1.20 mm	0.047 in.
Weight	1.17 kg/m ²	0.24 lbf/ft ²
Maximum Width	1,219 mm	48 in.
Minimum Pulley/Nose Bar		
Diameter For Endless Butt Splice	10 mm	0.394 in.
Minimum Back Flex	10 mm	0.394 in.
Load For 1% Extension	0.4 N/mm	2.28 lbs/in.
Standard Tension	1.5-5%	
Operational Temperature Range	-20/60°C	-4/140°F

Material Build



Features

FDA	YES	Anti-Static	NO
USDA Meat and Poultry	YES	Reinforced	NO
USDA Dairy	YES	Elastic	YES

Standard Fabrications

Cleats	NO	Footless Sidewall	NO
Guide on Top	NO	Footed Sidewall	NO
Guide on Bottom	NO		

*Minimum pulley diameters can vary when mechanical lace is installed. Contact our technical team for any fabrication or application questions.

90° Butt Splice Instructions

Water Cooled Press Settings

Pressure (psi)	Temperature		Press Time	Foil Position	Foil	Release Top/Bot.
	Top	Bottom				
30	170 C° 338 F°	170 C° 338 F°	90s	N/A	None	Matte/Matte

*These settings are a guideline only, every press is different. Test splicing is recommended.

Standard Splices

Butt Splice	Recommended
Soft Hinge Lace	Not Recommended

Alternative Lace Options

Staple Lace	Not Recommended
Plastic Rivet Lace	Not Recommended

Notes

Elastic construction for easy installation, reduced maintenance and cost saving elimination of elaborate and complicated take up assemblies.





UNIVERSAL BELTING RESOURCE

Industrial Lightweight Belting

1-800-928-9995

Customers@Ubelting.com

Product Data Sheet

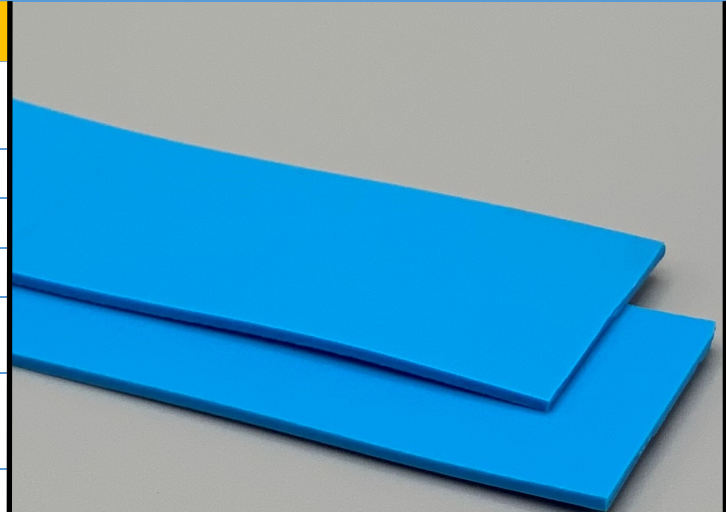
450051

FB1BLSS Matt Blue 90

PURclean

Material Construction

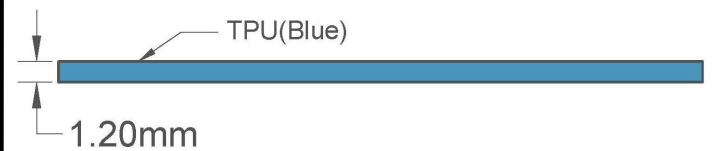
Composition	Material	TPU-Thermoplastic Polyurethane
	Color	Sky Blue
	Hardness (Shore "A")	90
	Tension Member	TPU Non-Reinforced
Surface Feature	Top	Matt
	Bottom	Matt
COF	Top	0.38
	Bottom	0.38



Technical Specifications

Overall Thickness	1.20 mm	0.047 in.
Weight	1.17 kg/m ²	0.24 lbf/ft ²
Maximum Width	1,219 mm	48 in.
Minimum Pulley/Nose Bar		
Diameter For Endless Butt Splice	10 mm	0.394 in.
Minimum Back Flex	10 mm	0.394 in.
Load For 1% Extension	0.4 N/mm	2.28 lbs/in.
Standard Tension	1.5-5%	
Operational Temperature Range	-20/60°C	-4/140°F

Material Build



90° Butt Splice Instructions

Water Cooled Press Settings

Pressure (psi)	Temperature		Press Time	Foil Position	Foil	Release Top/Bot.
	Top	Bottom				
30	170 C° 338 F°	170 C° 338 F°	90s	N/A	None	Matte/Matte

*These settings are a guideline only, every press is different. Test splicing is recommended.

Standard Splices

Butt Splice	Recommended
Soft Hinge Lace	Not Recommended

Alternative Lace Options

Staple Lace	Not Recommended
Plastic Rivet Lace	Not Recommended

Notes

Elastic construction for easy installation, reduced maintenance and cost saving elimination of elaborate and complicated take up assemblies.



Features

FDA	YES	Anti-Static	NO
USDA Meat and Poultry	YES	Reinforced	NO
USDA Dairy	YES	Elastic	YES

Standard Fabrications

Cleats	NO	Footless Sidewall	NO
Guide on Top	NO	Footed Sidewall	NO
Guide on Bottom	NO		

*Minimum pulley diameters can vary when mechanical lace is installed. Contact our technical team for any fabrication or application questions.



UNIVERSAL BELTING RESOURCE

Industrial Lightweight Belting

1-800-928-9995

Customers@Ubelting.com

Product Data Sheet

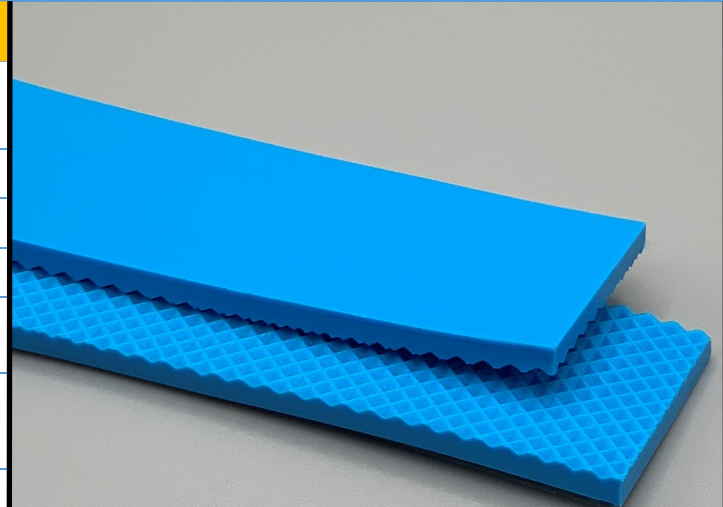
450100

FB2BLES Glossy Blue

PURclean

Material Construction

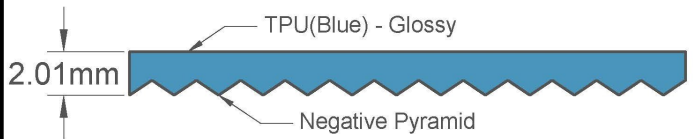
Composition	Material	TPU-Thermoplastic Polyurethane
	Color	Sky Blue
	Hardness (Shore "A")	98
	Tension Member	TPU Non-Reinforced
Surface Feature	Top	Glossy
	Bottom	Negative Pyramid
COF	Top	0.31
	Bottom	0.52



Technical Specifications

Overall Thickness	2.01 mm	0.079 in.
Weight	2.24 kg/m ²	0.46 lbf/ft ²
Maximum Width	1,524 mm	60 in.
Minimum Pulley/Nose Bar		
Diameter For Endless Butt Splice	30 mm	1.181 in.
Minimum Back Flex	30 mm	1.181 in.
Load For 1% Extension	2.0 N/mm	11.42 lbs/in.
Standard Tension	0.75%	
Operational Temperature Range	-9/71°C	16/160°F

Material Build



90° Butt Splice Instructions

Standard Amigo Press Settings		
*Follow basic Amigo operating instructions		
Pre-heat Temperature	Pre-heat Time	Weld Time
95°C	300 s	50-55 s
*These settings are a guideline only, every press is different. Test splicing is recommended.		

Features

FDA	YES	Anti-Static	NO
USDA Meat and Poultry	YES	Reinforced	NO
USDA Dairy	YES	Elastic	NO

Standard Fabrications

Cleats	YES	Footless Sidewall	YES
Guide on Top	YES	Footed Sidewall	YES
Guide on Bottom	YES		

Standard Splices

Butt Splice	Recommended
Soft Hinge Lace	Recommended
Alternative Lace Options	
Staple Lace	RS62
Plastic Rivet Lace	APF-100

Notes

Homogeneous urethane construction

*Minimum pulley diameters can vary when mechanical lace is installed. Contact our technical team for any fabrication or application questions.





UNIVERSAL BELTING RESOURCE

Industrial Lightweight Belting

1-800-928-9995

Customers@Ubelting.com

Product Data Sheet

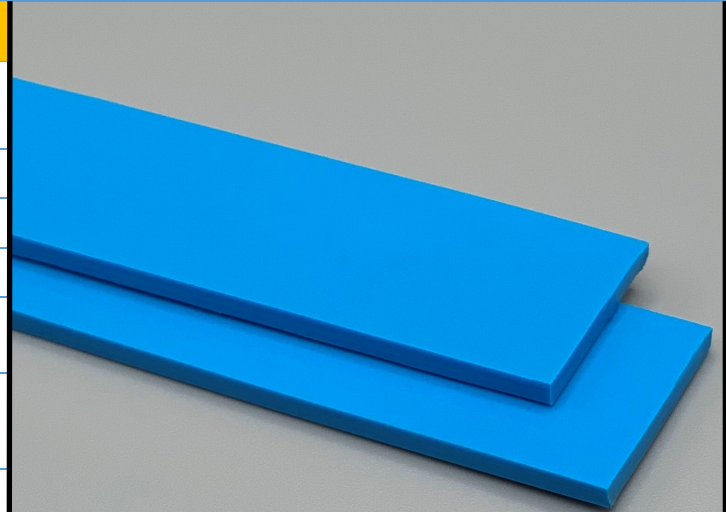
450115

FB2BLSS Glossy Blue

PURclean

Material Construction

Composition	Material	TPU-Thermoplastic Polyurethane
	Color	Sky Blue
	Hardness (Shore "A")	98
	Tension Member	TPU Non-Reinforced
Surface Feature	Top	Glossy
	Bottom	Glossy
COF	Top	0.52
	Bottom	0.52



Technical Specifications

Overall Thickness	2.01 mm	0.079 in.
Weight	2.24 kg/m ²	0.46 lbf/ft ²
Maximum Width	1,524 mm	60 in.
Minimum Pulley/Nose Bar		
Diameter For Endless Butt Splice	30 mm	1.181 in.
Minimum Back Flex	30 mm	1.181 in.
Load For 1% Extension	2.0 N/mm	11.42 lbs/in.
Standard Tension	0.75%	
Operational Temperature Range	-9/71°C	16/160°F

Features

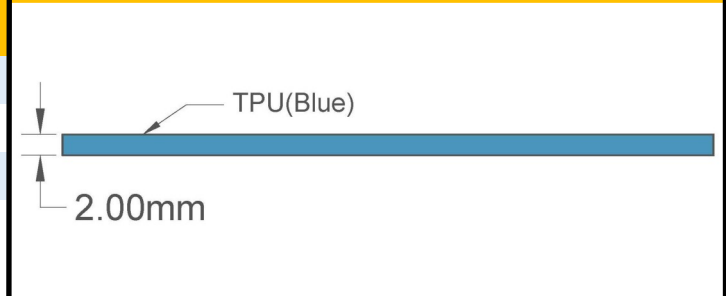
FDA	YES	Anti-Static	NO
USDA Meat and Poultry	YES	Reinforced	NO
USDA Dairy	YES	Elastic	NO

Standard Fabrications

Cleats	YES	Footless Sidewall	YES
Guide on Top	YES	Footed Sidewall	YES
Guide on Bottom	YES		

*Minimum pulley diameters can vary when mechanical lace is installed. Contact our technical team for any fabrication or application questions.

Material Build



90° Butt Splice Instructions

Standard Amigo Press Settings		
*Follow basic Amigo operating instructions		
Pre-heat Temperature	Pre-heat Time	Weld Time
95°C	300 s	50-55 s
*These settings are a guideline only, every press is different. Test splicing is recommended.		

Standard Splices

Butt Splice	Recommended
Soft Hinge Lace	Recommended
Alternative Lace Options	
Staple Lace	RS62
Plastic Rivet Lace	APF-100

Notes

Homogeneous urethane construction





UNIVERSAL BELTING RESOURCE

Industrial Lightweight Belting

1-800-928-9995

Customers@Ubelting.com

Product Data Sheet

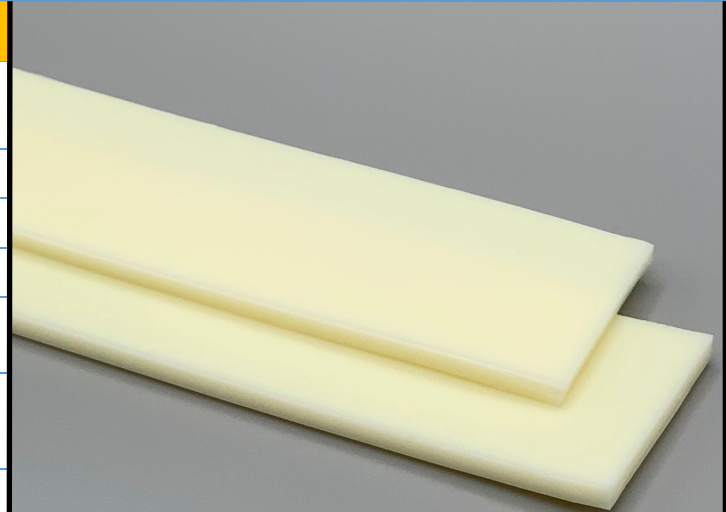
450116

FB2BGSS Matt/Gloss Beige

PURclean

Material Construction

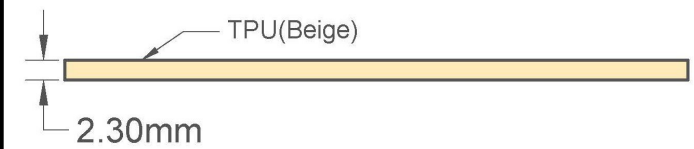
Composition	Material	TPU-Thermoplastic Polyurethane
	Color	Beige
	Hardness (Shore "A")	95
	Tension Member	TPU Non-Reinforced
Surface Feature	Top	Glossy
	Bottom	Matt
COF	Top	0.52
	Bottom	0.38



Technical Specifications

Overall Thickness	2.30 mm	0.091 in.
Weight	2.54 kg/m ²	0.52 lbf/ft ²
Maximum Width	1,524 mm	60 in.
Minimum Pulley/Nose Bar Diameter For Endless Butt Splice	30 mm	1.181 in.
Minimum Back Flex	30 mm	1.181 in.
Load For 1% Extension	2.0 N/mm	11.42 lbs/in.
Standard Tension	0.75%	
Operational Temperature Range	-9/71°C	16/160°F

Material Build



90° Butt Splice Instructions

Standard Amigo Press Settings		
*Follow basic Amigo operating instructions		
Pre-heat Temperature	Pre-heat Time	Weld Time
95°C	300 s	50-55 s
*These settings are a guideline only, every press is different. Test splicing is recommended.		

Features

FDA	YES	Anti-Static	NO
USDA Meat and Poultry	YES	Reinforced	NO
USDA Dairy	YES	Elastic	NO

Standard Fabrications

Cleats	YES	Footless Sidewall	YES
Guide on Top	YES	Footed Sidewall	YES
Guide on Bottom	YES		

Standard Splices

Butt Splice	Recommended
Soft Hinge Lace	Recommended
Alternative Lace Options	
Staple Lace	RS62
Plastic Rivet Lace	APF-100

Notes Homogeneous urethane construction

*Minimum pulley diameters can vary when mechanical lace is installed. Contact our technical team for any fabrication or application questions.





UNIVERSAL BELTING RESOURCE

Industrial Lightweight Belting

1-800-928-9995

Customers@Ubelting.com

Product Data Sheet

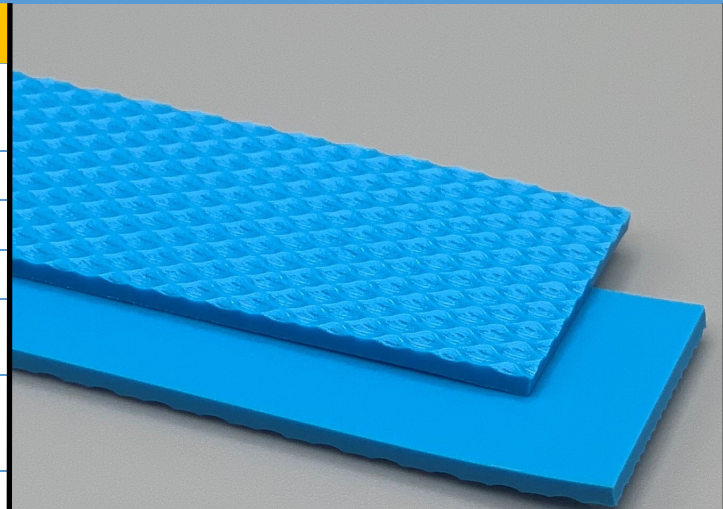
450117

FB2BLSP50 85 Matt Blue

PURclean

Material Construction

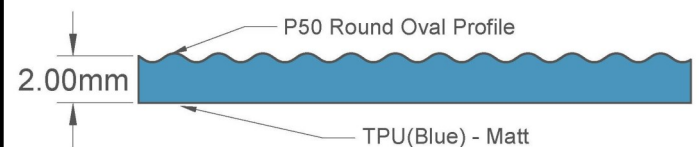
Composition	Material	TPU-Thermoplastic Polyurethane
	Color	Sky Blue
	Hardness (Shore "A")	85
	Tension Member	TPU Non-Reinforced
Surface Feature	Top	P50 Round Oval Profile
	Bottom	Matt
COF	Top	N/A
	Bottom	0.60



Technical Specifications

Overall Thickness	2.00 mm	0.079 in.
Weight	2.54 kg/m ²	0.52 lbf/ft ²
Maximum Width	762 mm	30 in.
Minimum Pulley/Nose Bar		
Diameter For Endless Butt Splice	19 mm	0.748 in.
Minimum Back Flex	19 mm	0.748 in.
Load For 1% Extension	2.0 N/mm	11.42 lbs/in.
Standard Tension	0.75%	
Operational Temperature Range	-9/71°C	16/160°F

Material Build



90° Butt Splice Instructions

Water Cooled Press Settings

Pressure (psi)	Temperature		Press Time	Foil Position	Foil	Release Top/Bot.
	Top	Bottom				
30	175 C° 347 F°	175 C° 347 F°	90s	N/A	None	Matte/ Impression Pad

*These settings are a guideline only, every press is different. Test splicing is recommended.

Standard Splices

Butt Splice	Recommended
Soft Hinge Lace	Not Recommended

Alternative Lace Options

Staple Lace	RS62
Plastic Rivet Lace	APF-100

Notes

Homogeneous urethane construction with round oval profile top surface for excellent release and/or fantastic bite. Can be used upside down for lower friction bottom.





UNIVERSAL BELTING RESOURCE

Industrial Lightweight Belting

1-800-928-9995

Customers@Ubelting.com

Product Data Sheet

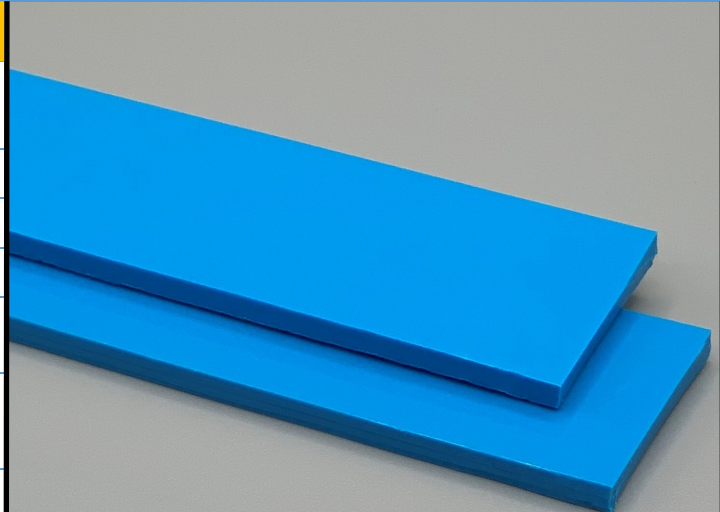
450120

FB3BLSS Glossy Blue

PURclean

Material Construction

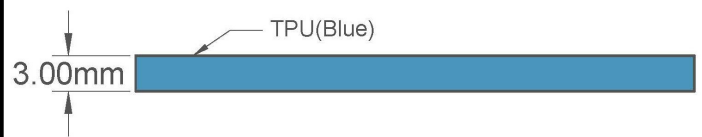
Composition	Material	TPU-Thermoplastic Polyurethane
	Color	Sky Blue
	Hardness (Shore "A")	98
	Tension Member	TPU Non-Reinforced
Surface Feature	Top	Glossy
	Bottom	Glossy
COF	Top	0.52
	Bottom	0.52



Technical Specifications

Overall Thickness	3.00 mm	0.118 in.
Weight	3.37 kg/m ²	0.69 lbf/ft ²
Maximum Width	1,524 mm	60 in.
Minimum Pulley/Nose Bar Diameter For Endless Butt Splice	40 mm	1.575 in.
Minimum Back Flex	40 mm	1.575 in.
Load For 1% Extension	3.0 N/mm	17.13 lbs/in.
Standard Tension	0.75%	
Operational Temperature Range	-9/71°C	16/160°F

Material Build



90° Butt Splice Instructions

Standard Amigo Press Settings		
*Follow basic Amigo operating instructions		
Pre-heat Temperature	Pre-heat Time	Weld Time
95°C	300 s	50-55 s
*These settings are a guideline only, every press is different. Test splicing is recommended.		

Features

FDA	YES	Anti-Static	NO
USDA Meat and Poultry	YES	Reinforced	NO
USDA Dairy	YES	Elastic	NO

Standard Splices

Butt Splice	Recommended
Soft Hinge Lace	Recommended
Alternative Lace Options	
Staple Lace	RS62
Plastic Rivet Lace	APF-150

Standard Fabrications

Cleats	YES	Footless Sidewall	YES
Guide on Top	YES	Footed Sidewall	YES
Guide on Bottom	YES		

Notes

Homogeneous urethane construction

*Minimum pulley diameters can vary when mechanical lace is installed. Contact our technical team for any fabrication or application questions.





UNIVERSAL BELTING RESOURCE

Industrial Lightweight Belting

1-800-928-9995

Customers@Ubelting.com

Product Data Sheet

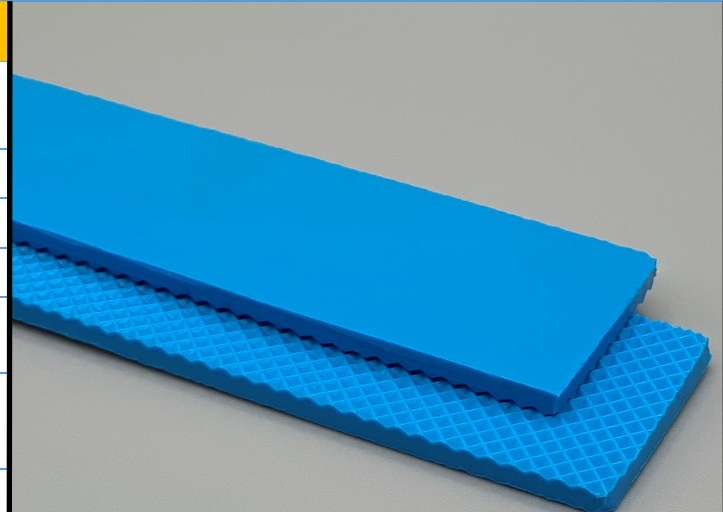
450122

FB3BLES Glossy Blue

PURclean

Material Construction

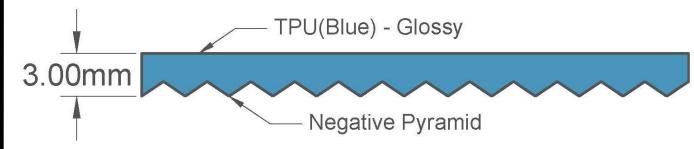
Composition	Material	TPU-Thermoplastic Polyurethane
	Color	Sky Blue
	Hardness (Shore "A")	98
	Tension Member	TPU Non-Reinforced
Surface Feature	Top	Glossy
	Bottom	Negative Pyramid
COF	Top	0.31
	Bottom	0.52



Technical Specifications

Overall Thickness	3.00 mm	0.118 in.
Weight	3.37 kg/m ²	0.69 lbf/ft ²
Maximum Width	1,524 mm	60 in.
Minimum Pulley/Nose Bar		
Diameter For Endless Butt Splice	40 mm	1.575 in.
Minimum Back Flex	40 mm	1.575 in.
Load For 1% Extension	3.0 N/mm	17.13 lbs/in.
Standard Tension	0.75%	
Operational Temperature Range	-9/71°C	16/160°F

Material Build



90° Butt Splice Instructions

Standard Amigo Press Settings		
*Follow basic Amigo operating instructions		
Pre-heat Temperature	Pre-heat Time	Weld Time
95°C	300 s	50-55 s
*These settings are a guideline only, every press is different. Test splicing is recommended.		

Standard Splices

Butt Splice	Recommended
Soft Hinge Lace	Recommended
Alternative Lace Options	
Staple Lace	RS62
Plastic Rivet Lace	APF-150

Notes

Homogeneous urethane construction

Features

FDA	YES	Anti-Static	NO
USDA Meat and Poultry	YES	Reinforced	NO
USDA Dairy	YES	Elastic	NO

Standard Fabrications

Cleats	YES	Footless Sidewall	YES
Guide on Top	YES	Footed Sidewall	YES
Guide on Bottom	YES		

*Minimum pulley diameters can vary when mechanical lace is installed. Contact our technical team for any fabrication or application questions.





UNIVERSAL BELTING RESOURCE

Industrial Lightweight Belting

1-800-928-9995

Customers@Ubelting.com

Product Data Sheet

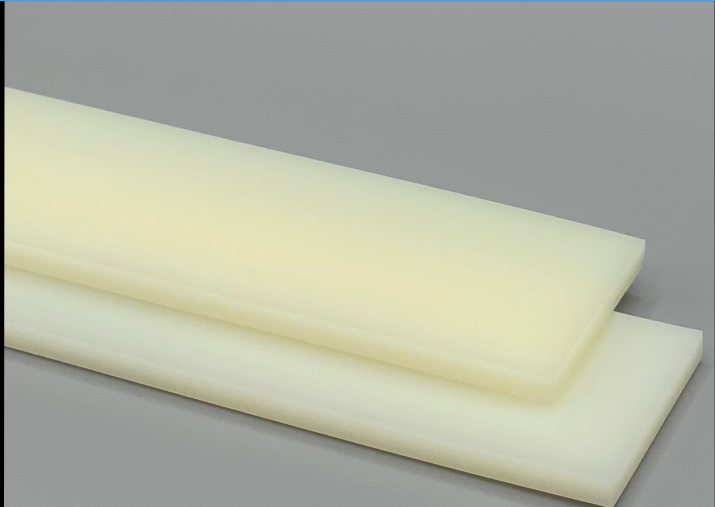
450130

FB3BGSS Glossy Beige

PURclean

Material Construction

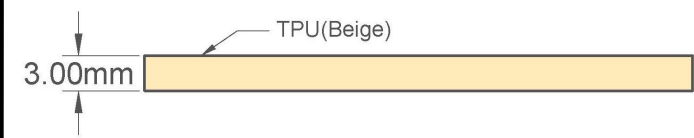
Composition	Material	TPU-Thermoplastic Polyurethane
	Color	Beige
	Hardness (Shore "A")	98
	Tension Member	TPU Non-Reinforced
Surface Feature	Top	Glossy
	Bottom	Glossy
COF	Top	0.52
	Bottom	0.52



Technical Specifications

Overall Thickness	3.00 mm	0.118 in.
Weight	3.37 kg/m ²	0.69 lbf/ft ²
Maximum Width	1,524 mm	60 in.
Minimum Pulley/Nose Bar		
Diameter For Endless Butt Splice	40 mm	1.575 in.
Minimum Back Flex	40 mm	1.575 in.
Load For 1% Extension	3.0 N/mm	17.13 lbs/in.
Standard Tension	0.75%	
Operational Temperature Range	-9/71°C	16/160°F

Material Build



Features

FDA	YES	Anti-Static	NO
USDA Meat and Poultry	YES	Reinforced	NO
USDA Dairy	YES	Elastic	NO

Standard Fabrications

Cleats	YES	Footless Sidewall	YES
Guide on Top	YES	Footed Sidewall	YES
Guide on Bottom	YES		

*Minimum pulley diameters can vary when mechanical lace is installed. Contact our technical team for any fabrication or application questions.

90° Butt Splice Instructions

Standard Amigo Press Settings

*Follow basic Amigo operating instructions

Pre-heat Temperature	Pre-heat Time	Weld Time
95°C	300 s	50-55 s

*These settings are a guideline only, every press is different. Test splicing is recommended.

Standard Splices

Butt Splice	Recommended
Soft Hinge Lace	Recommended

Alternative Lace Options

Staple Lace	RS62
Plastic Rivet Lace	APF-150

Notes

Homogeneous urethane construction





UNIVERSAL BELTING RESOURCE

Industrial Lightweight Belting

1-800-928-9995

Customers@Ubelting.com

Product Data Sheet

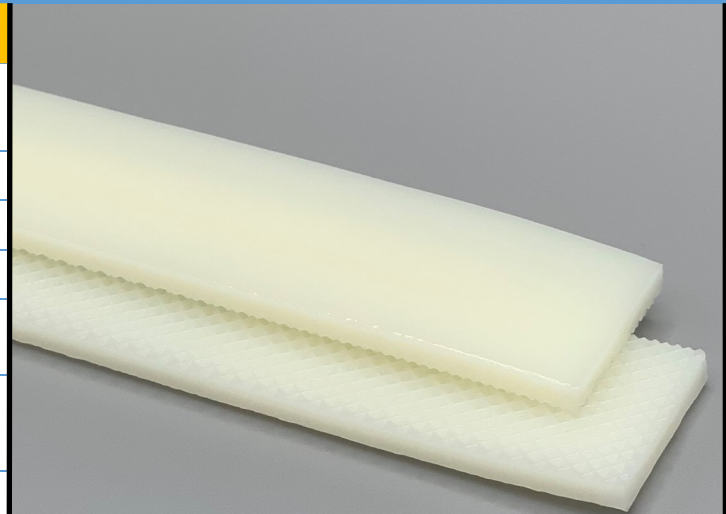
450132

FB3BGES Glossy Beige

PURclean

Material Construction

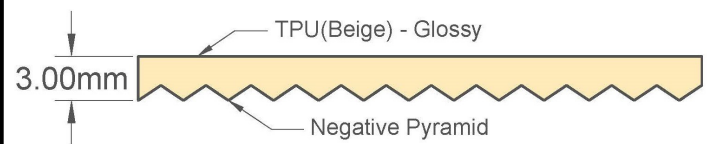
Composition	Material	TPU-Thermoplastic Polyurethane
	Color	Beige
	Hardness (Shore "A")	98
	Tension Member	TPU Non-Reinforced
Surface Feature	Top	Glossy
	Bottom	Negative Pyramid
COF	Top	0.31
	Bottom	0.52



Technical Specifications

Overall Thickness	3.00 mm	0.118 in.
Weight	3.37 kg/m ²	0.69 lbf/ft ²
Maximum Width	1,524 mm	60 in.
Minimum Pulley/Nose Bar		
Diameter For Endless Butt Splice	40 mm	1.575 in.
Minimum Back Flex	40 mm	1.575 in.
Load For 1% Extension	3.0 N/mm	17.13 lbs/in.
Standard Tension	0.75%	
Operational Temperature Range	-9/71°C	16/160°F

Material Build



90° Butt Splice Instructions

Standard Amigo Press Settings

*Follow basic Amigo operating instructions

Pre-heat Temperature	Pre-heat Time	Weld Time
95°C	300 s	50-55 s

*These settings are a guideline only, every press is different. Test splicing is recommended.

Standard Splices

Butt Splice	Recommended
Soft Hinge Lace	Recommended

Alternative Lace Options

Staple Lace	RS62
Plastic Rivet Lace	APF-150

Notes

Homogeneous urethane construction

Features

FDA	YES	Anti-Static	NO
USDA Meat and Poultry	YES	Reinforced	NO
USDA Dairy	YES	Elastic	NO

Standard Fabrications

Cleats	YES	Footless Sidewall	YES
Guide on Top	YES	Footed Sidewall	YES
Guide on Bottom	YES		

*Minimum pulley diameters can vary when mechanical lace is installed. Contact our technical team for any fabrication or application questions.





UNIVERSAL BELTING RESOURCE

Industrial Lightweight Belting

1-800-928-9995

Customers@Ubelting.com

Product Data Sheet

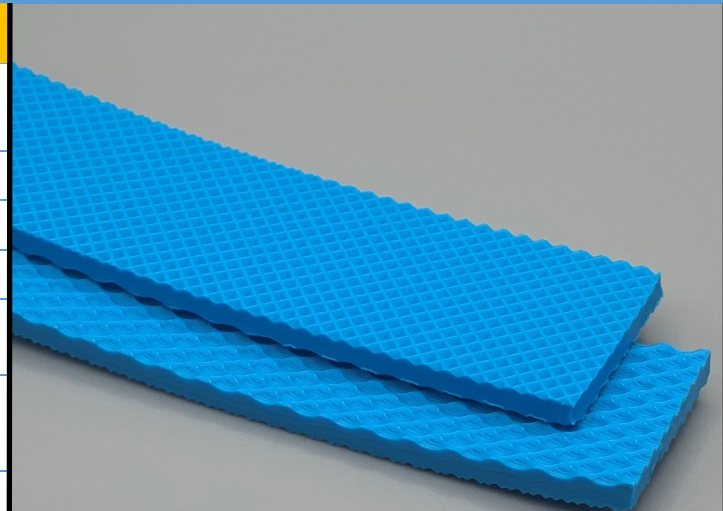
450135

FB3BLEP50 Blue

PURclean

Material Construction

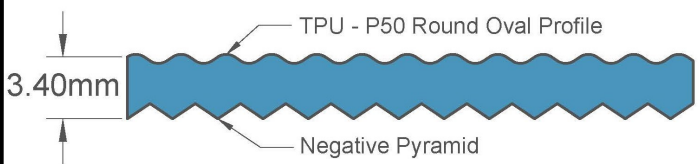
Composition	Material	TPU-Thermoplastic Polyurethane
	Color	Sky Blue
	Hardness (Shore "A")	95
	Tension Member	TPU Non-Reinforced
Surface Feature	Top	P50 Round Oval Profile
	Bottom	Negative Pyramid
COF	Top	N/A
	Bottom	0.31



Technical Specifications

Overall Thickness	3.40 mm	0.134 in.
Weight	3.8 kg/m ²	0.78 lbf/ft ²
Maximum Width	1,524 mm	60 in.
Minimum Pulley/Nose Bar		
Diameter For Endless Butt Splice	40 mm	1.575 in.
Minimum Back Flex	40 mm	1.575 in.
Load For 1% Extension	3.0 N/mm	17.13 lbs/in.
Standard Tension	0.75%	
Operational Temperature Range	-9/71°C	16/160°F

Material Build



90° Butt Splice Instructions

Standard Amigo Press Settings

*Follow basic Amigo operating instructions

Pre-heat Temperature	Pre-heat Time	Weld Time
95°C	300 s	50-55 s

*These settings are a guideline only, every press is different. Test splicing is recommended.

Standard Splices

Butt Splice	Recommended
Soft Hinge Lace	Recommended

Alternative Lace Options

Staple Lace	RS125
Plastic Rivet Lace	Not Recommended

Notes

Inverted diamond bottom for low friction on slider beds with round raised oval profile top side for positive transport / good release qualities

Features

FDA	YES	Anti-Static	NO
USDA Meat and Poultry	YES	Reinforced	NO
USDA Dairy	YES	Elastic	NO

Standard Fabrications

Cleats	YES	Footless Sidewall	YES
Guide on Top	YES	Footed Sidewall	YES
Guide on Bottom	YES		

*Minimum pulley diameters can vary when mechanical lace is installed. Contact our technical team for any fabrication or application questions.





UNIVERSAL BELTING RESOURCE

Industrial Lightweight Belting

1-800-928-9995

Customers@Ubelting.com

Product Data Sheet

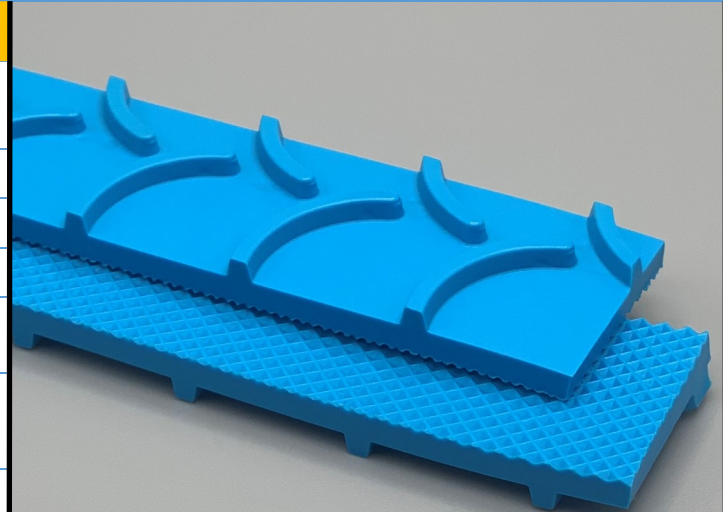
450136

FB3BLEP65 Crescent Blue

PURclean

Material Construction

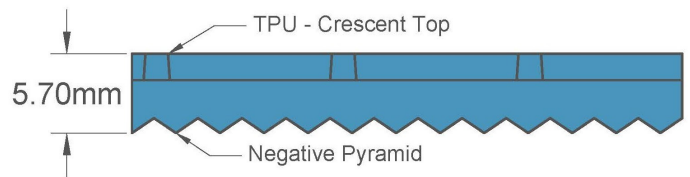
Composition	Material	TPU-Thermoplastic Polyurethane
	Color	Sky Blue
	Hardness (Shore "A")	95
	Tension Member	TPU Non-Reinforced
Surface Feature	Top	P65 Crescent Top
	Bottom	Negative Pyramid
COF	Top	N/A
	Bottom	0.31



Technical Specifications

Overall Thickness	5.70 mm	0.224 in.
Weight	3.8 kg/m ²	0.78 lbf/ft ²
Maximum Width	1,524 mm	60 in.
Minimum Pulley/Nose Bar		
Diameter For Endless Butt Splice	57 mm	2.244 in.
Minimum Back Flex	57 mm	2.244 in.
Load For 1% Extension	3.0 N/mm	17.13 lbs/in.
Standard Tension	0.75%	
Operational Temperature Range	-9/71°C	16/160°F

Material Build



90° Butt Splice Instructions

Standard Amigo Press Settings

*Follow basic Amigo operating instructions

Pre-heat Temperature	Pre-heat Time	Weld Time
95°C	300 s	50-55 s

*These settings are a guideline only, every press is different. Test splicing is recommended.

Standard Splices

Butt Splice	Recommended
Soft Hinge Lace	Recommended

Alternative Lace Options

Staple Lace	RS62
Plastic Rivet Lace	APF-150

Notes

Aggressive "Crescent" top profile for positive product handling on inclines and declines. Particularly suited to loose material and soft conforming product or packaging.

Features

FDA	YES	Anti-Static	NO
USDA Meat and Poultry	YES	Reinforced	NO
USDA Dairy	YES	Elastic	NO

Standard Fabrications

Cleats	NO	Footless Sidewall	NO
Guide on Top	NO	Footed Sidewall	NO
Guide on Bottom	YES		

*Minimum pulley diameters can vary when mechanical lace is installed. Contact our technical team for any fabrication or application questions.





UNIVERSAL BELTING RESOURCE

Industrial Lightweight Belting

1-800-928-9995

Customers@Ubelting.com

Product Data Sheet

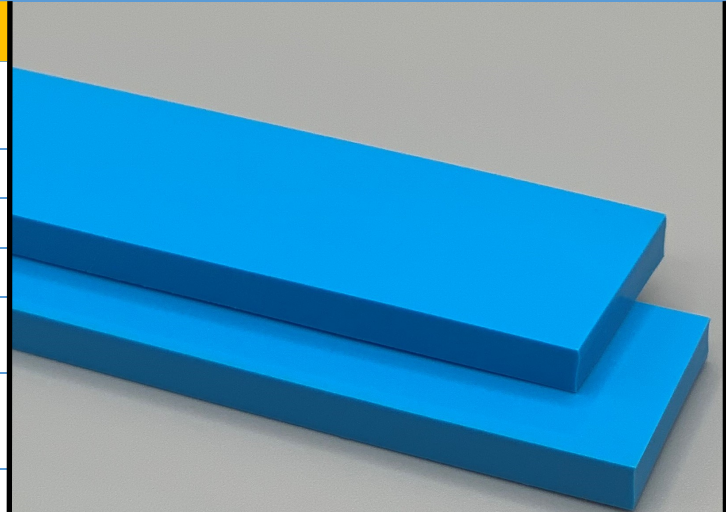
450150

FB5BLSS 90 Glossy Blue

PURclean

Material Construction

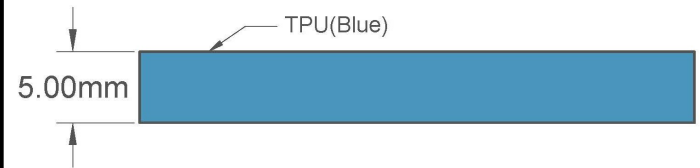
Composition	Material	TPU-Thermoplastic Polyurethane
	Color	Sky Blue
	Hardness (Shore "A")	90
	Tension Member	TPU Non-Reinforced
Surface Feature	Top	Glossy
	Bottom	Glossy
COF	Top	0.52
	Bottom	0.52



Technical Specifications

Overall Thickness	5.00 mm	0.197 in.
Weight	5.85 kg/m ²	1.2 lbf/ft ²
Maximum Width	1,524 mm	60 in.
Minimum Pulley/Nose Bar Diameter For Endless Butt Splice	67 mm	2.638 in.
Minimum Back Flex	67 mm	2.638 in.
Load For 1% Extension	6.0 N/mm	34.26 lbs/in.
Standard Tension	0.75%	
Operational Temperature Range	-9/71°C	16/160°F

Material Build



90° Butt Splice Instructions

Standard Amigo Press Settings

*Follow basic Amigo operating instructions

Pre-heat Temperature	Pre-heat Time	Weld Time
95°C	300 s	60-65 s

*These settings are a guideline only, every press is different. Test splicing is recommended.

Standard Splices

Butt Splice	Recommended
Soft Hinge Lace	Not Recommended

Alternative Lace Options

Staple Lace	Not Recommended
Plastic Rivet Lace	Not Recommended

Notes

Homogeneous urethane construction

Features

FDA	YES	Anti-Static	NO
USDA Meat and Poultry	YES	Reinforced	NO
USDA Dairy	YES	Elastic	NO

Standard Fabrications

Cleats	YES	Footless Sidewall	YES
Guide on Top	YES	Footed Sidewall	YES
Guide on Bottom	YES		

*Minimum pulley diameters can vary when mechanical lace is installed. Contact our technical team for any fabrication or application questions.





UNIVERSAL BELTING RESOURCE

Industrial Lightweight Belting

1-800-928-9995

Customers@Ubelting.com

Product Data Sheet

450550

FF2WHSS White

PURclean

Material Construction

Composition	Material	TPU-Thermoplastic Polyurethane
	Color	White
	Hardness (Shore "A")	90
	Tension Member	Kevlar Cords
Surface Feature	Top	Matt
	Bottom	Matt
COF	Top	0.40
	Bottom	0.40



Technical Specifications

Overall Thickness	2.00 mm	0.079 in.
Weight	2.6 kg/m ²	0.53 lbf/ft ²
Maximum Width	1,219 mm	48 in.
Minimum Pulley/Nose Bar		
Diameter For Endless Butt Splice	35 mm	1.378 in.
Minimum Back Flex	35 mm	1.378 in.
Load For 1% Extension	5.0 N/mm	28.55 lbs/in.
Standard Tension	0.5%	
Operational Temperature Range	-20/90°C	-4/194°F

Features

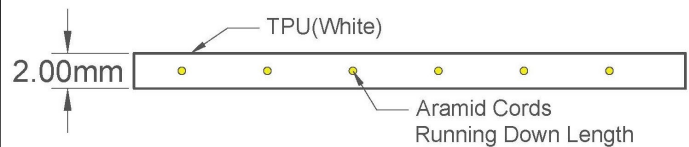
FDA	YES	Anti-Static	NO
USDA Meat and Poultry	YES	Reinforced	YES
USDA Dairy	YES	Elastic	NO

Standard Fabrications

Cleats	YES	Footless Sidewall	YES
Guide on Top	YES	Footed Sidewall	YES
Guide on Bottom	YES		

*Minimum pulley diameters can vary when mechanical lace is installed. Contact our technical team for any fabrication or application questions.

Material Build



90° Butt Splice Instructions

Standard Amigo Press Settings

*Follow basic Amigo operating instructions

Pre-heat Temperature	Pre-heat Time	Weld Time
95°C	300 s	50-55 s

*These settings are a guideline only, every press is different. Test splicing is recommended.

Standard Splices

Butt Splice	Recommended
Soft Hinge Lace	Recommended

Alternative Lace Options

Staple Lace	RS62
Plastic Rivet Lace	APF-100

Notes

Longitudinal cord construction helps provide solid sealed edges and reduces chance of wicking and fraying





UNIVERSAL BELTING RESOURCE

Industrial Lightweight Belting

1-800-928-9995

Customers@Ubelting.com

Product Data Sheet

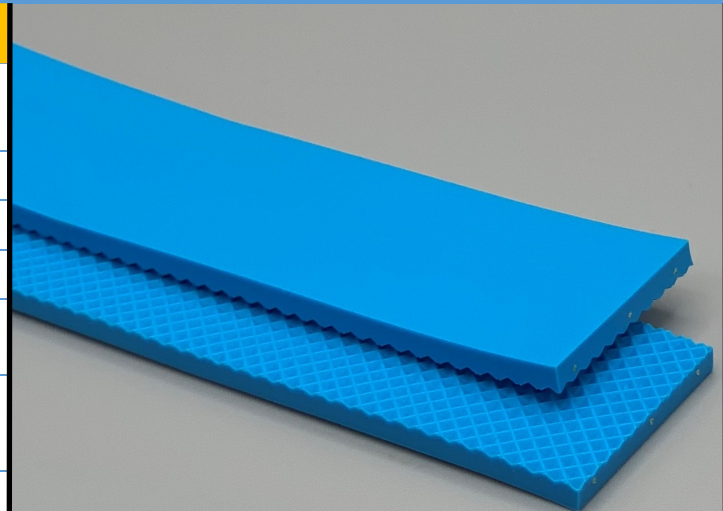
450551

FF3BLES Blue

PURclean

Material Construction

Composition	Material	TPU-Thermoplastic Polyurethane
	Color	Sky Blue
	Hardness (Shore "A")	90
	Tension Member	Kevlar Cords
Surface Feature	Top	Matt
	Bottom	Negative Pyramid
COF	Top	0.40
	Bottom	0.40



Technical Specifications

Overall Thickness	3.00 mm	0.118 in.
Weight	2.83 kg/m ²	0.58 lbf/ft ²
Maximum Width	1,219 mm	48 in.
Minimum Pulley/Nose Bar		
Diameter For Endless Butt Splice	25 mm	0.984 in.
Minimum Back Flex	51 mm	2.008 in.
Load For 1% Extension	5.0 N/mm	28.55 lbs/in.
Standard Tension	0.5%	
Operational Temperature Range	-9/71°C	16/160°F

Features

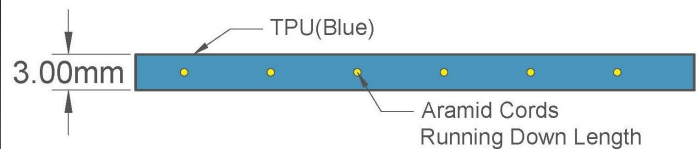
FDA	YES	Anti-Static	NO
USDA Meat and Poultry	YES	Reinforced	YES
USDA Dairy	YES	Elastic	NO

Standard Fabrications

Cleats	YES	Footless Sidewall	YES
Guide on Top	YES	Footed Sidewall	YES
Guide on Bottom	YES		

*Minimum pulley diameters can vary when mechanical lace is installed. Contact our technical team for any fabrication or application questions.

Material Build



90° Butt Splice Instructions

Standard Amigo Press Settings

*Follow basic Amigo operating instructions

Pre-heat Temperature	Pre-heat Time	Weld Time
95°C	300 s	50-55 s

*These settings are a guideline only, every press is different. Test splicing is recommended.

Standard Splices

Butt Splice	Recommended
Soft Hinge Lace	Recommended

Alternative Lace Options

Staple Lace	RS62
Plastic Rivet Lace	APF-150

Notes

3mm Reinforced E X S. Longitudinal cord construction spaced on 10 mm centers reduces the chance of stretching and helps maintain solid sealed edges nearly eliminating any concern with wicking or fray. Matte finish provides great release and low reflectiv



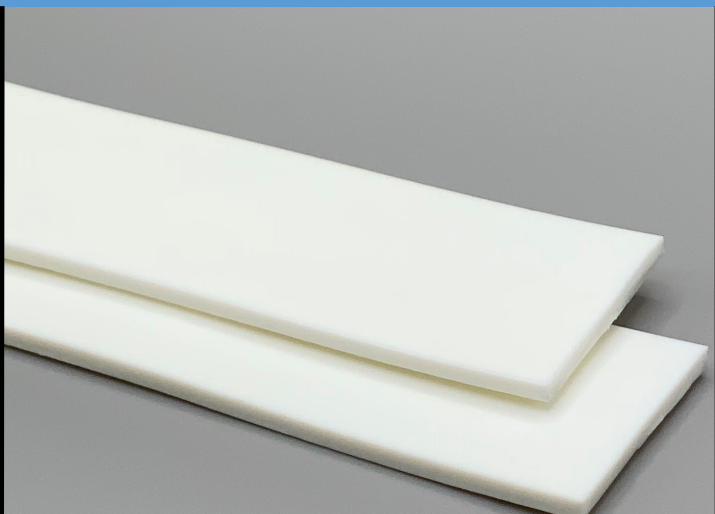
450610

FB2WHSS Matt White 85

PURclean

Material Construction

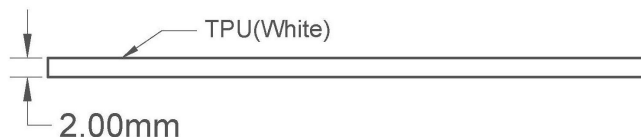
Composition	Material	TPU-Thermoplastic Polyurethane
	Color	White
	Hardness (Shore "A")	85
	Tension Member	TPU Non-Reinforced
Surface Feature	Top	Matt
	Bottom	Matt
COF	Top	0.60
	Bottom	0.60



Technical Specifications

Overall Thickness	2.00 mm	0.079 in.
Weight	2.54 kg/m ²	0.52 lbf/ft ²
Maximum Width	762 mm	30 in.
Minimum Pulley/Nose Bar		
Diameter For Endless Butt Splice	19 mm	0.748 in.
Minimum Back Flex	19 mm	0.748 in.
Load For 1% Extension	2.0 N/mm	11.42 lbs/in.
Standard Tension	0.75%	
Operational Temperature Range	-9/71°C	16/160°F

Material Build



Features

FDA	YES	Anti-Static	NO
USDA Meat and Poultry	YES	Reinforced	NO
USDA Dairy	YES	Elastic	NO

Standard Fabrications

Cleats	NO	Footless Sidewall	NO
Guide on Top	NO	Footed Sidewall	NO
Guide on Bottom	NO		

*Minimum pulley diameters can vary when mechanical lace is installed. Contact our technical team for any fabrication or application questions.

90° Butt Splice Instructions

Water Cooled Press Settings

Pressure (psi)	Temperature		Press Time	Foil Position	Foil	Release Top/Bot.
	Top	Bottom				
30	175 C° 347 F°	175 C° 347 F°	90s	N/A	None	Matte/Matte

*These settings are a guideline only, every press is different. Test splicing is recommended.

Standard Splices

Butt Splice	Recommended
Soft Hinge Lace	Not Recommended

Alternative Lace Options

Staple Lace	RS62
Plastic Rivet Lace	APF-100

Notes

Homogeneous urethane construction





UNIVERSAL BELTING RESOURCE

Industrial Lightweight Belting

1-800-928-9995

Customers@Ubelting.com

Product Data Sheet

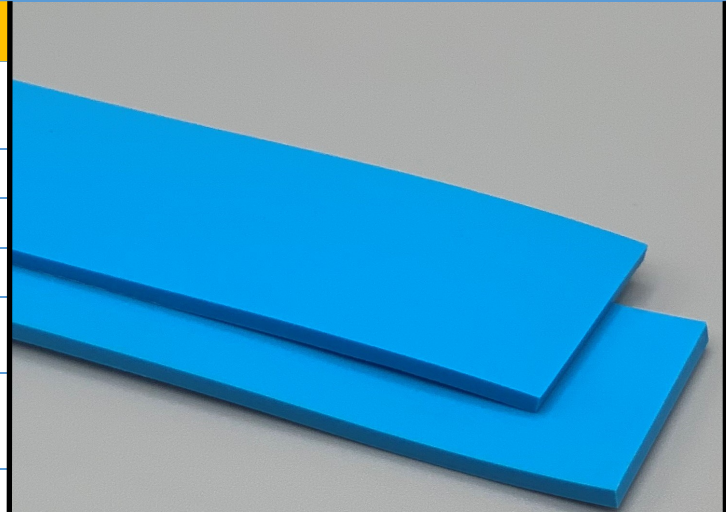
450615

FB2BLSS 85 Matt x Matt Blue

PURclean

Material Construction

Composition	Material	TPU-Thermoplastic Polyurethane
	Color	Sky Blue
	Hardness (Shore "A")	85
	Tension Member	TPU Non-Reinforced
Surface Feature	Top	Matt
	Bottom	Matt
COF	Top	0.60
	Bottom	0.60



Technical Specifications

Overall Thickness	2.00 mm	0.079 in.
Weight	2.54 kg/m ²	0.52 lbf/ft ²
Maximum Width	762 mm	30 in.
Minimum Pulley/Nose Bar		
Diameter For Endless Butt Splice	19 mm	0.748 in.
Minimum Back Flex	19 mm	0.748 in.
Load For 1% Extension	2.0 N/mm	11.42 lbs/in.
Standard Tension	0.75%	
Operational Temperature Range	-9/71°C	16/160°F

Features

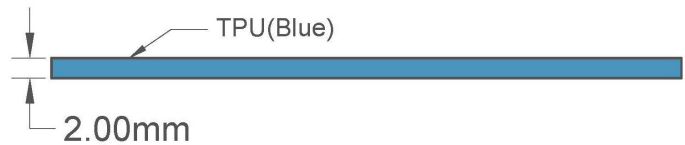
FDA	YES	Anti-Static	NO
USDA Meat and Poultry	YES	Reinforced	NO
USDA Dairy	YES	Elastic	YES

Standard Fabrications

Cleats	NO	Footless Sidewall	NO
Guide on Top	NO	Footed Sidewall	NO
Guide on Bottom	NO		

*Minimum pulley diameters can vary when mechanical lace is installed. Contact our technical team for any fabrication or application questions.

Material Build



90° Butt Splice Instructions

Water Cooled Press Settings

Pressure (psi)	Temperature		Press Time	Foil Position	Foil	Release Top/Bot.
	Top	Bottom				
30	175 C° 347 F°	175 C° 347 F°	90s	N/A	None	Matte/Matte

*These settings are a guideline only, every press is different. Test splicing is recommended.

Standard Splices

Butt Splice	Recommended
Soft Hinge Lace	Not Recommended

Alternative Lace Options

Staple Lace	RS62
Plastic Rivet Lace	APF-100

Notes

Homogeneous urethane construction





UNIVERSAL BELTING RESOURCE

Industrial Lightweight Belting

1-800-928-9995

Customers@Ubelting.com

Product Data Sheet

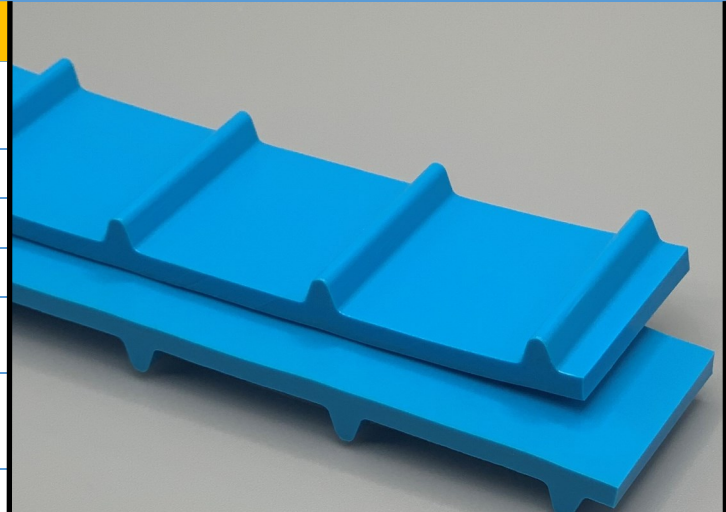
453100

PS2BLSS Matt Blue

PURclean

Material Construction

Composition	Material	TPU-Thermoplastic Polyurethane
	Color	Sky Blue
	Hardness (Shore "A")	98
	Tension Member	TPU Non-Reinforced
Surface Feature	Top	Matt
	Bottom	Smooth w/ 1" Pitch Tooth
COF	Top	0.38
	Bottom	0.38



Technical Specifications

Overall Thickness	3.05 mm	0.12 in.
Weight	4.39 kg/m ²	0.9 lbf/ft ²
Maximum Width	1,524 mm	60 in.
Minimum Pulley/Nose Bar		
Diameter For Endless Butt Splice	51 mm	2.008 in.
Minimum Back Flex	83 mm	3.268 in.
Load For 1% Extension	3.0 N/mm	17.13 lbs/in.
Standard Tension	0.3%	
Operational Temperature Range	-9/71°C	16/160°F

Features

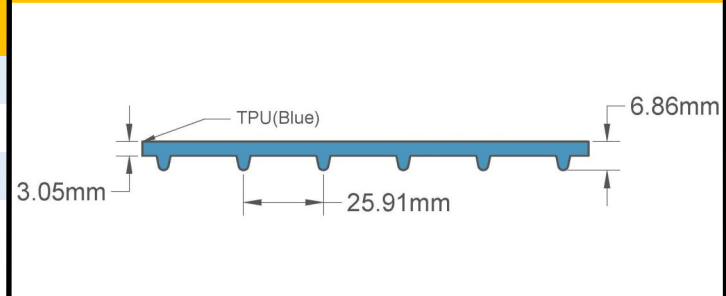
FDA	YES	Anti-Static	NO
USDA Meat and Poultry	YES	Reinforced	NO
USDA Dairy	YES	Elastic	NO

Standard Fabrications

Cleats	YES	Footless Sidewall	YES
Guide on Top	YES	Footed Sidewall	YES
Guide on Bottom	NO		

*Minimum pulley diameters can vary when mechanical lace is installed. Contact our technical team for any fabrication or application questions.

Material Build



90° Butt Splice Instructions

Standard Amigo Press Settings		
*Follow basic Amigo operating instructions		
Pre-heat Temperature	Pre-heat Time	Weld Time
95°C	350-355 s	50-55 s
*These settings are a guideline only, every press is different. Test splicing is recommended.		

Standard Splices

Butt Splice	Recommended
Soft Hinge Lace	Recommended
Alternative Lace Options	
Staple Lace	RS62
Plastic Rivet Lace	APF-150

Notes

Homogeneous urethane construction





UNIVERSAL BELTING RESOURCE

Industrial Lightweight Belting

1-800-928-9995

Customers@Ubelting.com

Product Data Sheet

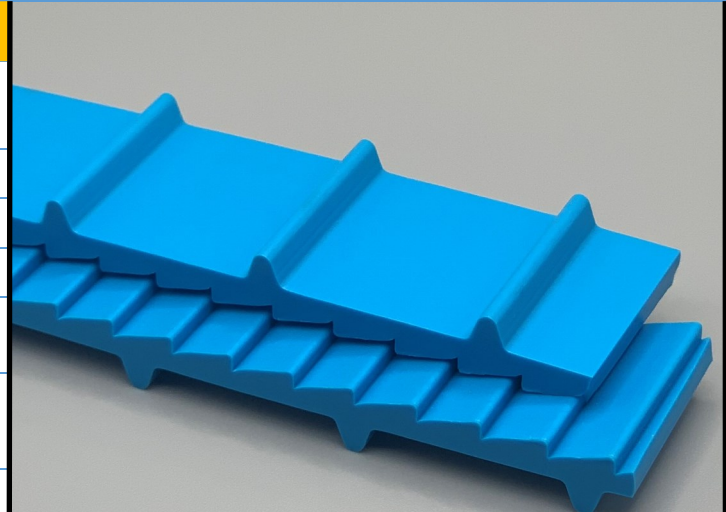
453150

PS2BLSP55 Blue

PURclean

Material Construction

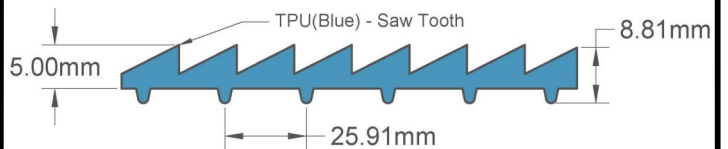
Composition	Material	TPU-Thermoplastic Polyurethane
	Color	Sky Blue
	Hardness (Shore "A")	90
	Tension Member	TPU Non-Reinforced
Surface Feature	Top	Saw Tooth
	Bottom	Smooth w/ 1" pitch Tooth
COF	Top	0.38
	Bottom	0.38



Technical Specifications

Overall Thickness	5.00 mm	0.197 in.
Weight	5.17 kg/m ²	1.06 lbf/ft ²
Maximum Width	914 mm	36 in.
Minimum Pulley/Nose Bar		
Diameter For Endless Butt Splice	51 mm	2.008 in.
Minimum Back Flex	83 mm	3.268 in.
Load For 1% Extension	3.0 N/mm	17.13 lbs/in.
Standard Tension	0.3%	
Operational Temperature Range	-9/71°C	16/160°F

Material Build



Features

FDA	YES	Anti-Static	NO
USDA Meat and Poultry	YES	Reinforced	NO
USDA Dairy	YES	Elastic	NO

Standard Fabrications

Cleats	NO	Footless Sidewall	NO
Guide on Top	NO	Footed Sidewall	NO
Guide on Bottom	NO		

*Minimum pulley diameters can vary when mechanical lace is installed. Contact our technical team for any fabrication or application questions.

90° Butt Splice Instructions

Standard Amigo Press Settings

*Follow basic Amigo operating instructions

Pre-heat Temperature	Pre-heat Time	Weld Time
95°C	350-355 s	50-55 s

*These settings are a guideline only, every press is different. Test splicing is recommended.

Standard Splices

Butt Splice	Recommended
Soft Hinge Lace	Recommended

Alternative Lace Options

Staple Lace	RS62
Plastic Rivet Lace	APF-150

Notes

Homogeneous urethane construction 1" tooth pitch positive drive bottom with saw tooth profiled top surface for excellent grip properties.





UNIVERSAL BELTING RESOURCE

Industrial Lightweight Belting

1-800-928-9995

Customers@Ubelting.com

Product Data Sheet

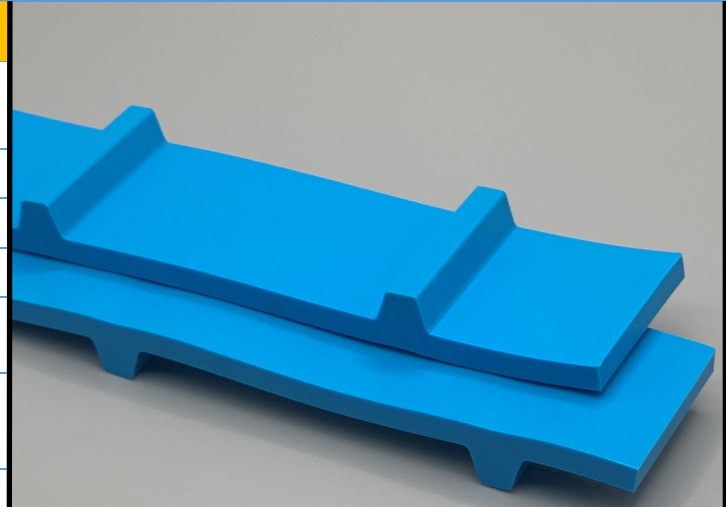
453200

PB3BLSS Matt Blue

PURclean

Material Construction

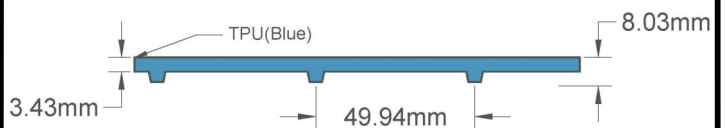
Composition	Material	TPU-Thermoplastic Polyurethane
	Color	Sky Blue
	Hardness (Shore "A")	98
	Tension Member	TPU Non-Reinforced
Surface Feature	Top	Matt
	Bottom	Smooth w/ 2" pitch Tooth
COF	Top	0.38
	Bottom	0.38



Technical Specifications

Overall Thickness	3.43 mm	0.135 in.
Weight	5.12 kg/m ²	1.05 lbf/ft ²
Maximum Width	1,524 mm	60 in.
Minimum Pulley/Nose Bar		
Diameter For Endless Butt Splice	80 mm	3.15 in.
Minimum Back Flex	98 mm	3.858 in.
Load For 1% Extension	3.0 N/mm	17.13 lbs/in.
Standard Tension	0.3%	
Operational Temperature Range	-9/71°C	16/160°F

Material Build



90° Butt Splice Instructions

Standard Amigo Press Settings

*Follow basic Amigo operating instructions

Pre-heat Temperature	Pre-heat Time	Weld Time
95°C	350-355 s	50-55 s

*These settings are a guideline only, every press is different. Test splicing is recommended.

Standard Splices

Butt Splice	Recommended
Soft Hinge Lace	Recommended

Alternative Lace Options

Staple Lace	RS125
Plastic Rivet Lace	Not Recommended

Notes

Homogeneous urethane construction

Features

FDA	YES	Anti-Static	NO
USDA Meat and Poultry	YES	Reinforced	NO
USDA Dairy	YES	Elastic	NO

Standard Fabrications

Cleats	YES	Footless Sidewall	YES
Guide on Top	YES	Footed Sidewall	YES
Guide on Bottom	NO		

*Minimum pulley diameters can vary when mechanical lace is installed. Contact our technical team for any fabrication or application questions.





UNIVERSAL BELTING RESOURCE

Industrial Lightweight Belting

1-800-928-9995

Customers@Ubelting.com

Product Data Sheet

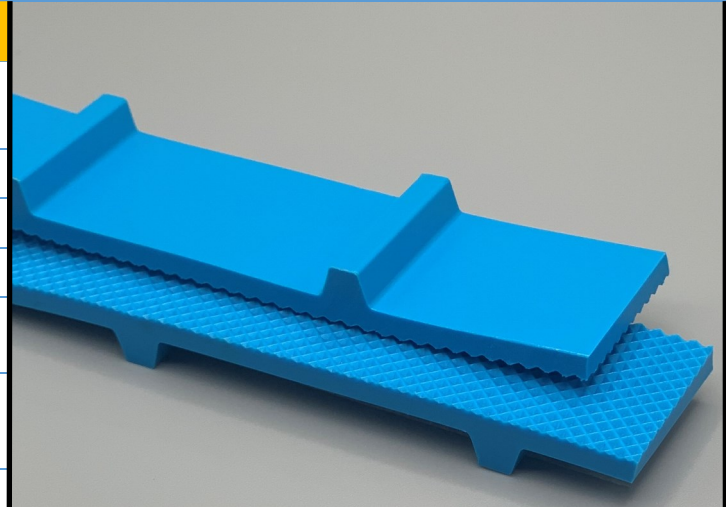
453205

PB3BLSE Matt Blue

PURclean

Material Construction

Composition	Material	TPU-Thermoplastic Polyurethane
	Color	Sky Blue
	Hardness (Shore "A")	98
	Tension Member	TPU Non-Reinforced
Surface Feature	Top	Negative Pyramid
	Bottom	Smooth w/ 2" pitch Tooth
COF	Top	0.38
	Bottom	0.38



Technical Specifications

Overall Thickness	3.43 mm	0.135 in.
Weight	5.12 kg/m ²	1.05 lbf/ft ²
Maximum Width	1,524 mm	60 in.
Minimum Pulley/Nose Bar		
Diameter For Endless Butt Splice	80 mm	3.15 in.
Minimum Back Flex	98 mm	3.858 in.
Load For 1% Extension	3.0 N/mm	17.13 lbs/in.
Standard Tension	0.3%	
Operational Temperature Range	-9/71°C	16/160°F

Features

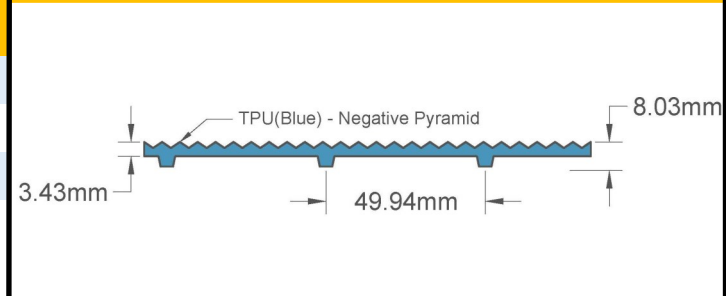
FDA	YES	Anti-Static	NO
USDA Meat and Poultry	YES	Reinforced	NO
USDA Dairy	YES	Elastic	NO

Standard Fabrications

Cleats	YES	Footless Sidewall	YES
Guide on Top	YES	Footed Sidewall	YES
Guide on Bottom	NO		

*Minimum pulley diameters can vary when mechanical lace is installed. Contact our technical team for any fabrication or application questions.

Material Build



90° Butt Splice Instructions

Standard Amigo Press Settings		
*Follow basic Amigo operating instructions		
Pre-heat Temperature	Pre-heat Time	Weld Time
95°C	350-355 s	50-55 s
*These settings are a guideline only, every press is different. Test splicing is recommended.		

Standard Splices

Butt Splice	Recommended
Soft Hinge Lace	Recommended
Alternative Lace Options	
Staple Lace	RS125
Plastic Rivet Lace	Not Recommended

Notes

Homogeneous urethane construction





UNIVERSAL BELTING RESOURCE

Industrial Lightweight Belting

1-800-928-9995

Customers@Ubelting.com

Product Data Sheet

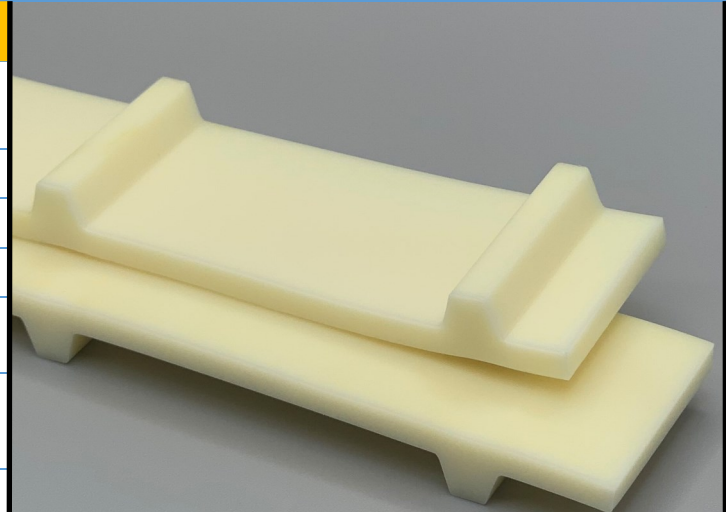
453220

PB3BGSS Matt Beige

PURclean

Material Construction

Composition	Material	TPU-Thermoplastic Polyurethane
	Color	Beige
	Hardness (Shore "A")	98
	Tension Member	TPU Non-Reinforced
Surface Feature	Top	Matt
	Bottom	Smooth w/ 2" pitch Tooth
COF	Top	0.38
	Bottom	0.38



Technical Specifications

Overall Thickness	3.43 mm	0.135 in.
Weight	5.12 kg/m ²	1.05 lbf/ft ²
Maximum Width	1,524 mm	60 in.
Minimum Pulley/Nose Bar Diameter For Endless Butt Splice	80 mm	3.15 in.
Minimum Back Flex	98 mm	3.858 in.
Load For 1% Extension	3.0 N/mm	17.13 lbs/in.
Standard Tension	0.3%	
Operational Temperature Range	-9/71°C	16/160°F

Features

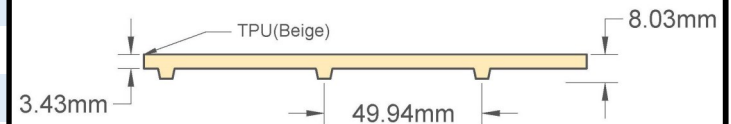
FDA	YES	Anti-Static	NO
USDA Meat and Poultry	YES	Reinforced	NO
USDA Dairy	YES	Elastic	NO

Standard Fabrications

Cleats	YES	Footless Sidewall	YES
Guide on Top	YES	Footed Sidewall	YES
Guide on Bottom	NO		

*Minimum pulley diameters can vary when mechanical lace is installed. Contact our technical team for any fabrication or application questions.

Material Build



90° Butt Splice Instructions

Standard Amigo Press Settings

*Follow basic Amigo operating instructions

Pre-heat Temperature	Pre-heat Time	Weld Time
95°C	350-355 s	50-55 s

*These settings are a guideline only, every press is different. Test splicing is recommended.

Standard Splices

Butt Splice	Recommended
Soft Hinge Lace	Recommended

Alternative Lace Options

Staple Lace	RS125
Plastic Rivet Lace	Not Recommended

Notes

Homogeneous urethane construction



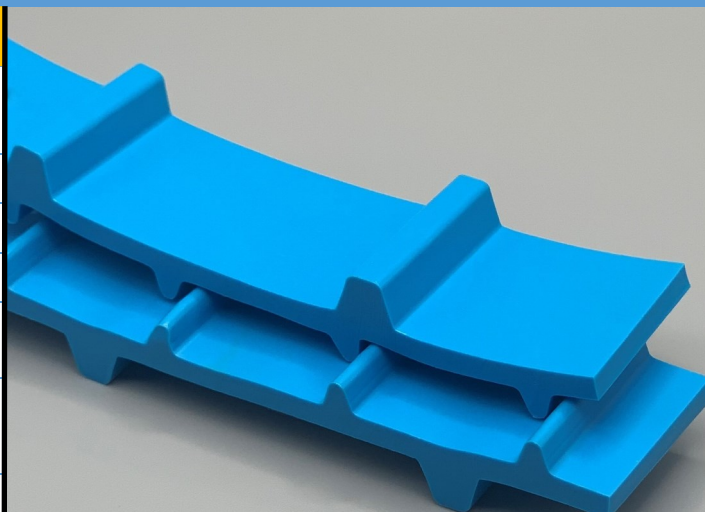
453300

PSPB3BLSS Blue

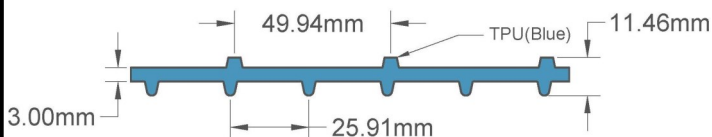
PURclean

Material Construction

Composition	Material	TPU-Thermoplastic Polyurethane
	Color	Sky Blue
	Hardness (Shore "A")	98
	Tension Member	TPU Non-Reinforced
Surface Feature	Top	Smooth w/ 2" pitch Tooth
	Bottom	Smooth w/ 1" pitch Tooth
COF	Top	0.38
	Bottom	0.38



Material Build



Technical Specifications

Overall Thickness	3.00 mm	0.118 in.
Weight	4.68 kg/m ²	0.96 lbf/ft ²
Maximum Width	762 mm	30 in.
Minimum Pulley/Nose Bar		
Diameter For Endless Butt Splice	80 mm	3.15 in.
Minimum Back Flex	80 mm	3.15 in.
Load For 1% Extension	3.0 N/mm	17.13 lbs/in.
Standard Tension		0.3%
Operational Temperature Range	-9/71°C	16/160°F

Features

FDA	YES	Anti-Static	NO
USDA Meat and Poultry	YES	Reinforced	NO
USDA Dairy	YES	Elastic	NO

Standard Fabrications

Cleats	NO	Footless Sidewall	NO
Guide on Top	NO	Footed Sidewall	NO
Guide on Bottom	NO		

*Minimum pulley diameters can vary when mechanical lace is installed. Contact our technical team for any fabrication or application questions.

90° Butt Splice Instructions

Standard Amigo Press Settings

*Follow basic Amigo operating instructions

Pre-heat Temperature	Pre-heat Time	Weld Time
95°C	350-355 s	50-55 s

*These settings are a guideline only, every press is different. Test splicing is recommended.

Standard Splices

Butt Splice	Recommended
Soft Hinge Lace	Recommended

Alternative Lace Options

Staple Lace	RS62
Plastic Rivet Lace	APF-150

Notes

Homogeneous urethane construction 1" tooth pitch positive drive bottom with 2" tooth pitch positive drive top. Can be used as 1" drive with 2 inch spaced "K8" top cleats or as 2" drive with 1" spaced "Meat cleats" top side (Total O/A = .481")





UNIVERSAL BELTING RESOURCE

Industrial Lightweight Belting

1-800-928-9995

Customers@Ubelting.com

Product Data Sheet

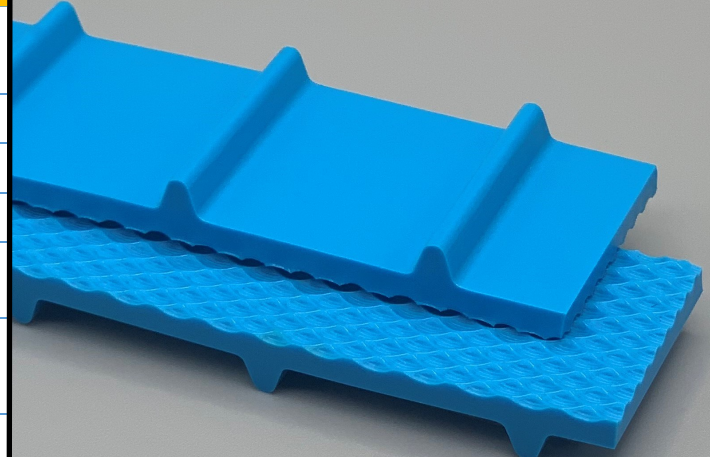
453400

PS2BLSP50 Blue

PURclean

Material Construction

Composition	Material	TPU-Thermoplastic Polyurethane
	Color	Sky Blue
	Hardness (Shore "A")	98
	Tension Member	TPU Non-Reinforced
Surface Feature	Top	P50 Round Oval Profile
	Bottom	Smooth w/ 1" pitch Tooth
COF	Top	N/A
	Bottom	0.38



Technical Specifications

Overall Thickness	2.80 mm	0.11 in.
Weight	5.17 kg/m ²	1.06 lbf/ft ²
Maximum Width	1,219 mm	48 in.
Minimum Pulley/Nose Bar Diameter For Endless Butt Splice	48 mm	1.89 in.
Minimum Back Flex	83 mm	3.268 in.
Load For 1% Extension	3.0 N/mm	17.13 lbs/in.
Standard Tension	0.3%	
Operational Temperature Range	-9/71°C	16/160°F

Features

FDA	YES	Anti-Static	NO
USDA Meat and Poultry	YES	Reinforced	NO
USDA Dairy	YES	Elastic	NO

Standard Fabrications

Cleats	YES	Footless Sidewall	YES
Guide on Top	YES	Footed Sidewall	YES
Guide on Bottom	NO		

*Minimum pulley diameters can vary when mechanical lace is installed. Contact our technical team for any fabrication or application questions.

Material Build



90° Butt Splice Instructions

Standard Amigo Press Settings

*Follow basic Amigo operating instructions

Pre-heat Temperature	Pre-heat Time	Weld Time
95°C	350-355 s	50-55 s

*These settings are a guideline only, every press is different. Test splicing is recommended.

Standard Splices

Butt Splice	Recommended
Soft Hinge Lace	Recommended

Alternative Lace Options

Staple Lace	RS62
Plastic Rivet Lace	APF-150

Notes

Homogeneous urethane construction 1" tooth pitch positive drive bottom with round oval "P50" profiled top surface for excellent release properties.





UNIVERSAL BELTING RESOURCE

Industrial Lightweight Belting

1-800-928-9995

Customers@Ubelting.com

Product Data Sheet

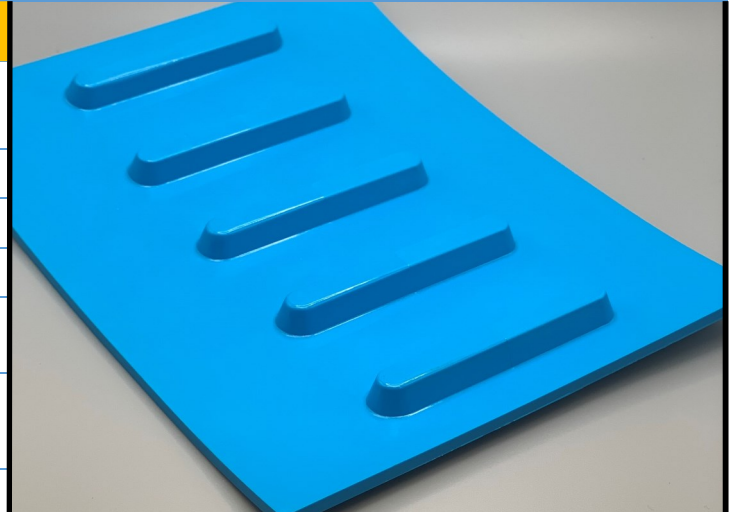
455350

CD3BLSS 12 Blue

PURclean

Material Construction

Composition	Material	TPU-Thermoplastic Polyurethane
	Color	Sky Blue
	Hardness (Shore "A")	98
	Tension Member	TPU Non-Reinforced
Surface Feature	Top	Glossy
	Bottom	Smooth w/center lug 39.7 mm Ctrs.
COF	Top	0.52
	Bottom	0.52



Technical Specifications

Overall Thickness	3.40 mm	0.134 in.
Weight	4.54 kg/m ²	0.93 lbf/ft ²
Maximum Width	305 mm	12 in.
Minimum Pulley/Nose Bar		
Diameter For Endless Butt Splice	80 mm	3.15 in.
Minimum Back Flex	98 mm	3.858 in.
Load For 1% Extension	3.0 N/mm	17.13 lbs/in.
Standard Tension	0.3%	
Operational Temperature Range	-9/71°C	16/160°F

Features

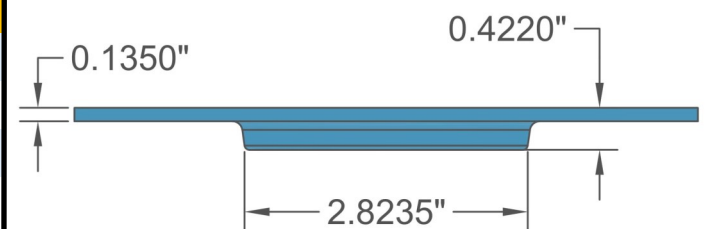
FDA	YES	Anti-Static	NO
USDA Meat and Poultry	YES	Reinforced	NO
USDA Dairy	YES	Elastic	NO

Standard Fabrications

Cleats	YES	Footless Sidewall	YES
Guide on Top	YES	Footed Sidewall	YES
Guide on Bottom	YES		

*Minimum pulley diameters can vary when mechanical lace is installed. Contact our technical team for any fabrication or application questions.

Material Build



90° Butt Splice Instructions

Standard Amigo Press Settings

*Follow basic Amigo operating instructions

Pre-heat Temperature	Pre-heat Time	Weld Time
95°C	300 s	50-55 s

*These settings are a guideline only, every press is different. Test splicing is recommended.

Standard Splices

Butt Splice	Recommended
Soft Hinge Lace	Recommended

Alternative Lace Options

Staple Lace	RS125
Plastic Rivet Lace	Not Recommended

Notes

Homogeneous urethane construction with a single row of drive lugs down the center.



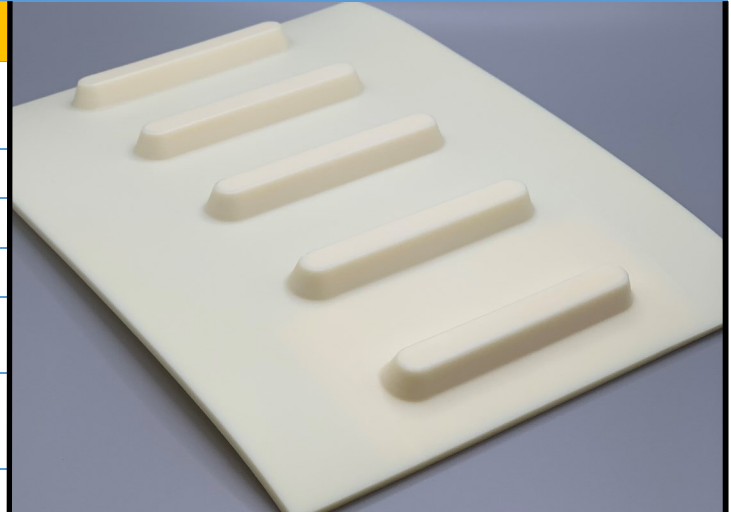
455352

CD3BGSS 12 Beige

PURclean

Material Construction

Composition	Material	TPU-Thermoplastic Polyurethane
	Color	Beige
	Hardness (Shore "A")	98
	Tension Member	TPU Non-Reinforced
Surface Feature	Top	Glossy
	Bottom	Smooth w/center lug 39.7 mm Ctrs.
COF	Top	0.52
	Bottom	0.52



Technical Specifications

Overall Thickness	3.40 mm	0.134 in.
Weight	4.54 kg/m ²	0.93 lbf/ft ²
Maximum Width	305 mm	12 in.
Minimum Pulley/Nose Bar		
Diameter For Endless Butt Splice	80 mm	3.15 in.
Minimum Back Flex	98 mm	3.858 in.
Load For 1% Extension	3.0 N/mm	17.13 lbs/in.
Standard Tension	0.3%	
Operational Temperature Range	-9/71°C	16/160°F

Features

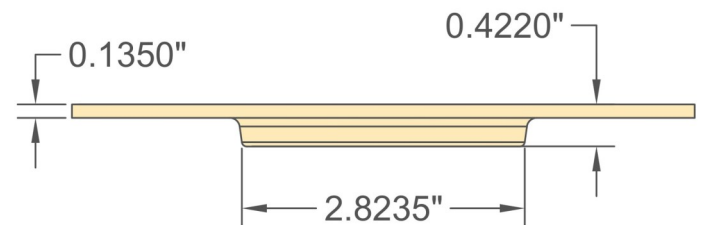
FDA	YES	Anti-Static	NO
USDA Meat and Poultry	YES	Reinforced	NO
USDA Dairy	YES	Elastic	NO

Standard Fabrications

Cleats	YES	Footless Sidewall	YES
Guide on Top	YES	Footed Sidewall	YES
Guide on Bottom	YES		

*Minimum pulley diameters can vary when mechanical lace is installed. Contact our technical team for any fabrication or application questions.

Material Build



90° Butt Splice Instructions

Standard Amigo Press Settings

*Follow basic Amigo operating instructions

Pre-heat Temperature	Pre-heat Time	Weld Time
95°C	300 s	50-55 s

*These settings are a guideline only, every press is different. Test splicing is recommended.

Standard Splices

Butt Splice	Recommended
Soft Hinge Lace	Recommended

Alternative Lace Options

Staple Lace	RS125
Plastic Rivet Lace	Not Recommended

Notes

Homogeneous urethane construction with a single row of drive lugs down the center.





UNIVERSAL BELTING RESOURCE

Industrial Lightweight Belting

1-800-928-9995

Customers@Ubelting.com

Product Data Sheet

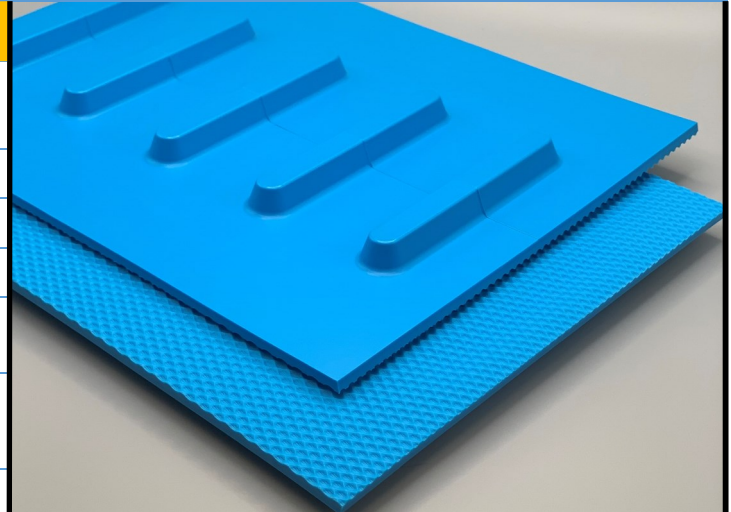
455353

CD3BLSP50 12 Blue

PURclean

Material Construction

Composition	Material	TPU-Thermoplastic Polyurethane
	Color	Sky Blue
	Hardness (Shore "A")	98
	Tension Member	TPU Non-Reinforced
Surface Feature	Top	P50 Round Oval Profile
	Bottom	Smooth w/center lug 39.7 mm Ctrs.
COF	Top	N/A
	Bottom	0.52



Technical Specifications

Overall Thickness	3.40 mm	0.134 in.
Weight	4.54 kg/m ²	0.93 lbf/ft ²
Maximum Width	305 mm	12 in.
Minimum Pulley/Nose Bar		
Diameter For Endless Butt Splice	80 mm	3.15 in.
Minimum Back Flex	98 mm	3.858 in.
Load For 1% Extension	3.0 N/mm	17.13 lbs/in.
Standard Tension		0.3%
Operational Temperature Range	-9/71°C	16/160°F

Features

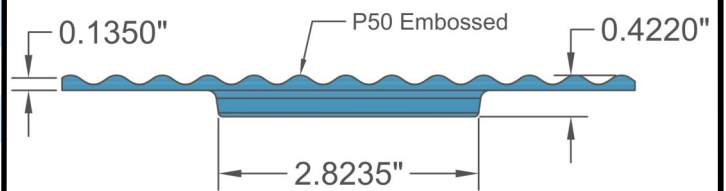
FDA	YES	Anti-Static	NO
USDA Meat and Poultry	YES	Reinforced	NO
USDA Dairy	YES	Elastic	NO

Standard Fabrications

Cleats	YES	Footless Sidewall	YES
Guide on Top	YES	Footed Sidewall	YES
Guide on Bottom	YES		

*Minimum pulley diameters can vary when mechanical lace is installed. Contact our technical team for any fabrication or application questions.

Material Build



90° Butt Splice Instructions

Standard Amigo Press Settings

*Follow basic Amigo operating instructions

Pre-heat Temperature	Pre-heat Time	Weld Time
95°C	300 s	50-55 s

*These settings are a guideline only, every press is different. Test splicing is recommended.

Standard Splices

Butt Splice	Recommended
Soft Hinge Lace	Recommended

Alternative Lace Options

Staple Lace	RS125
Plastic Rivet Lace	Not Recommended

Notes

Homogeneous urethane construction with a single row of drive lugs down the center.



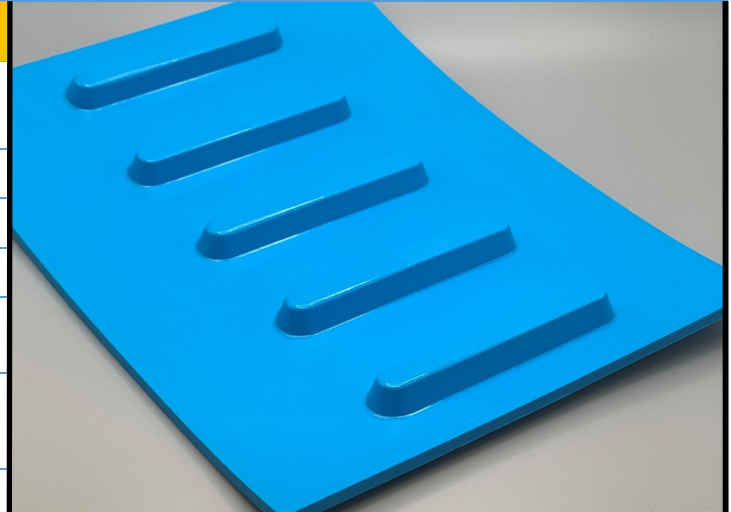
455360

CD3BLSS 18 Blue

PURclean

Material Construction

Composition	Material	TPU-Thermoplastic Polyurethane
	Color	Sky Blue
	Hardness (Shore "A")	98
	Tension Member	TPU Non-Reinforced
Surface Feature	Top	Glossy
	Bottom	Smooth w/center lug 39.7 mm Ctrs.
COF	Top	0.52
	Bottom	0.52



Technical Specifications

Overall Thickness	3.40 mm	0.134 in.
Weight	4.54 kg/m ²	0.93 lbf/ft ²
Maximum Width	457 mm	18 in.
Minimum Pulley/Nose Bar		
Diameter For Endless Butt Splice	80 mm	3.15 in.
Minimum Back Flex	98 mm	3.858 in.
Load For 1% Extension	3.0 N/mm	17.13 lbs/in.
Standard Tension		0.3%
Operational Temperature Range	-9/71°C	16/160°F

Features

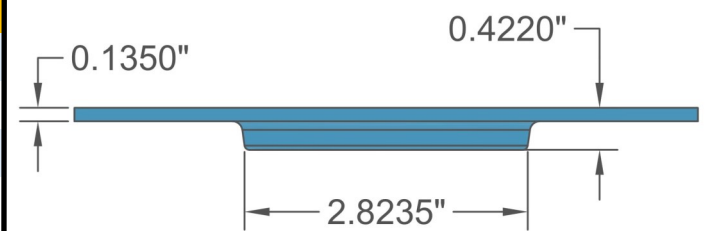
FDA	YES	Anti-Static	NO
USDA Meat and Poultry	YES	Reinforced	NO
USDA Dairy	YES	Elastic	NO

Standard Fabrications

Cleats	YES	Footless Sidewall	YES
Guide on Top	YES	Footed Sidewall	YES
Guide on Bottom	YES		

*Minimum pulley diameters can vary when mechanical lace is installed. Contact our technical team for any fabrication or application questions.

Material Build



90° Butt Splice Instructions

Standard Amigo Press Settings

*Follow basic Amigo operating instructions

Pre-heat Temperature	Pre-heat Time	Weld Time
95°C	300 s	50-55 s

*These settings are a guideline only, every press is different. Test splicing is recommended.

Standard Splices

Butt Splice	Recommended
Soft Hinge Lace	Recommended

Alternative Lace Options

Staple Lace	RS125
Plastic Rivet Lace	Not Recommended

Notes

Homogeneous urethane construction with a single row of drive lugs down the center.



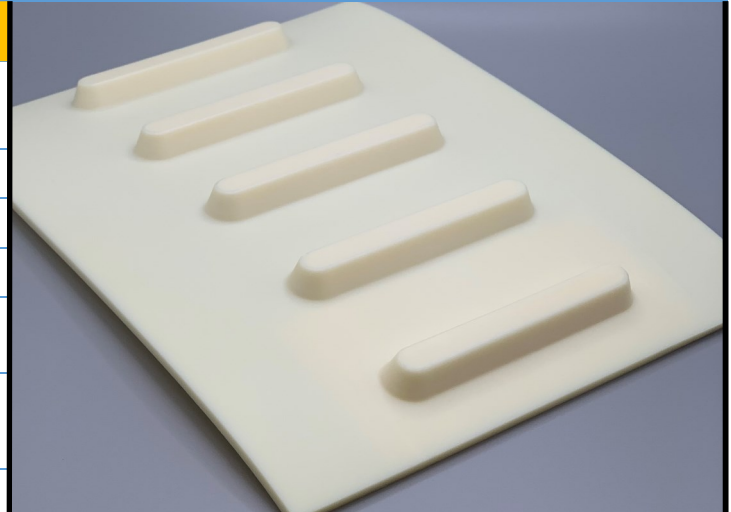
455362

CD3BGSS 18 Beige

PURclean

Material Construction

Composition	Material	TPU-Thermoplastic Polyurethane
	Color	Beige
	Hardness (Shore "A")	98
	Tension Member	TPU Non-Reinforced
Surface Feature	Top	Glossy
	Bottom	Smooth w/center lug 39.7 mm Ctrs.
COF	Top	0.52
	Bottom	0.52



Technical Specifications

Overall Thickness	3.40 mm	0.134 in.
Weight	4.54 kg/m ²	0.93 lbf/ft ²
Maximum Width	457 mm	18 in.
Minimum Pulley/Nose Bar		
Diameter For Endless Butt Splice	80 mm	3.15 in.
Minimum Back Flex	98 mm	3.858 in.
Load For 1% Extension	3.0 N/mm	17.13 lbs/in.
Standard Tension	0.3%	
Operational Temperature Range	-9/71°C	16/160°F

Features

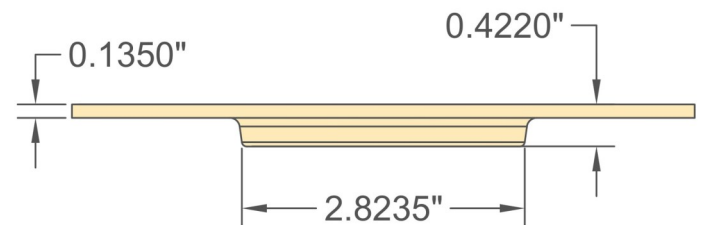
FDA	YES	Anti-Static	NO
USDA Meat and Poultry	YES	Reinforced	NO
USDA Dairy	YES	Elastic	NO

Standard Fabrications

Cleats	YES	Footless Sidewall	YES
Guide on Top	YES	Footed Sidewall	YES
Guide on Bottom	YES		

*Minimum pulley diameters can vary when mechanical lace is installed. Contact our technical team for any fabrication or application questions.

Material Build



90° Butt Splice Instructions

Standard Amigo Press Settings

*Follow basic Amigo operating instructions

Pre-heat Temperature	Pre-heat Time	Weld Time
95°C	300 s	50-55 s

*These settings are a guideline only, every press is different. Test splicing is recommended.

Standard Splices

Butt Splice	Recommended
Soft Hinge Lace	Recommended

Alternative Lace Options

Staple Lace	RS125
Plastic Rivet Lace	Not Recommended

Notes

Homogeneous urethane construction with a single row of drive lugs down the center.





UNIVERSAL BELTING RESOURCE

Industrial Lightweight Belting

1-800-928-9995

Customers@Ubelting.com

Product Data Sheet

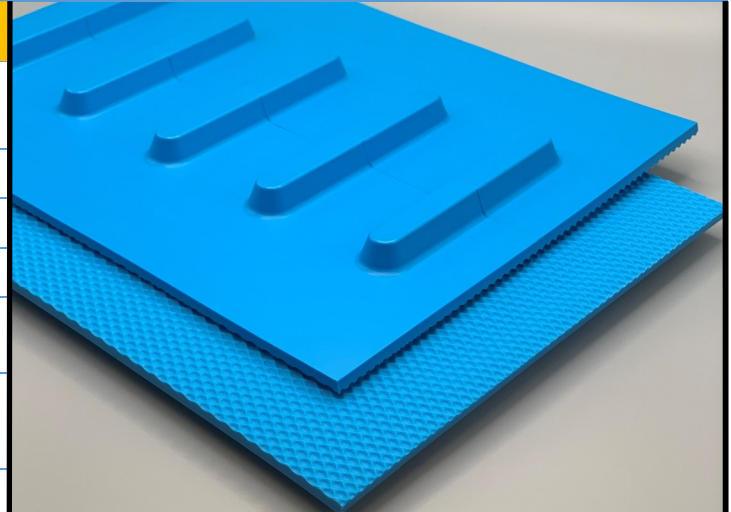
455363

CD3BLSP50 18 Blue

PURclean

Material Construction

Composition	Material	TPU-Thermoplastic Polyurethane
	Color	Sky Blue
	Hardness (Shore "A")	98
	Tension Member	TPU Non-Reinforced
Surface Feature	Top	P50 Round Oval Profile
	Bottom	Smooth w/center lug 39.7 mm Ctrs.
COF	Top	N/A
	Bottom	0.52



Technical Specifications

Overall Thickness	3.40 mm	0.134 in.
Weight	4.54 kg/m ²	0.93 lbf/ft ²
Maximum Width	457 mm	18 in.
Minimum Pulley/Nose Bar		
Diameter For Endless Butt Splice	80 mm	3.15 in.
Minimum Back Flex	98 mm	3.858 in.
Load For 1% Extension	3.0 N/mm	17.13 lbs/in.
Standard Tension		0.3%
Operational Temperature Range	-9/71°C	16/160°F

Features

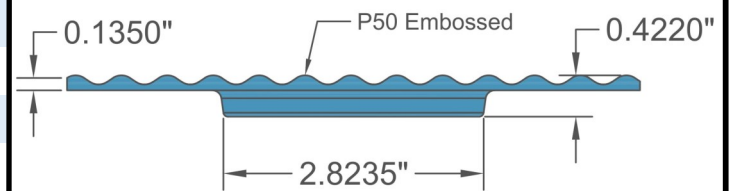
FDA	YES	Anti-Static	NO
USDA Meat and Poultry	YES	Reinforced	NO
USDA Dairy	YES	Elastic	NO

Standard Fabrications

Cleats	YES	Footless Sidewall	YES
Guide on Top	YES	Footed Sidewall	YES
Guide on Bottom	YES		

*Minimum pulley diameters can vary when mechanical lace is installed. Contact our technical team for any fabrication or application questions.

Material Build



90° Butt Splice Instructions

Standard Amigo Press Settings

*Follow basic Amigo operating instructions

Pre-heat Temperature	Pre-heat Time	Weld Time
95°C	300 s	50-55 s

*These settings are a guideline only, every press is different. Test splicing is recommended.

Standard Splices

Butt Splice	Recommended
Soft Hinge Lace	Recommended

Alternative Lace Options

Staple Lace	RS125
Plastic Rivet Lace	Not Recommended

Notes

3mm Center Drive x P50. With round oval profile top surface for excellent release and/or fantastic bite in a homogeneous urethane construction





UNIVERSAL BELTING RESOURCE

Industrial Lightweight Belting

1-800-928-9995

Customers@Ubelting.com

Product Data Sheet

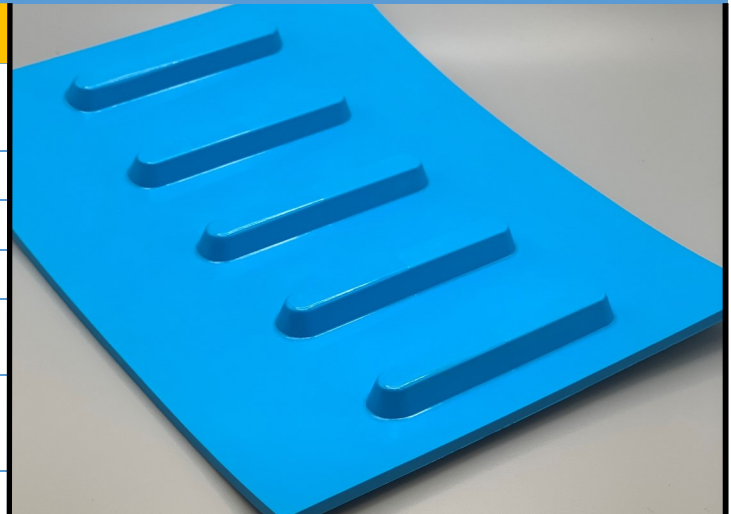
455370

CD3BLSS 24 Blue

PURclean

Material Construction

Composition	Material	TPU-Thermoplastic Polyurethane
	Color	Sky Blue
	Hardness (Shore "A")	98
	Tension Member	TPU Non-Reinforced
Surface Feature	Top	Glossy
	Bottom	Smooth w/center lug 39.7 mm Ctrs.
COF	Top	0.52
	Bottom	0.52



Technical Specifications

Overall Thickness	3.40 mm	0.134 in.
Weight	4.54 kg/m ²	0.93 lbf/ft ²
Maximum Width	610 mm	24 in.
Minimum Pulley/Nose Bar		
Diameter For Endless Butt Splice	80 mm	3.15 in.
Minimum Back Flex	98 mm	3.858 in.
Load For 1% Extension	3.0 N/mm	17.13 lbs/in.
Standard Tension	0.3%	
Operational Temperature Range	-9/71°C	16/160°F

Features

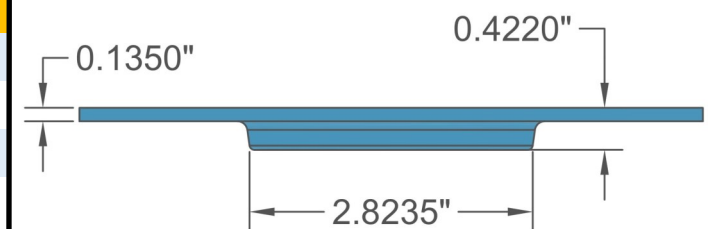
FDA	YES	Anti-Static	NO
USDA Meat and Poultry	YES	Reinforced	NO
USDA Dairy	YES	Elastic	NO

Standard Fabrications

Cleats	YES	Footless Sidewall	YES
Guide on Top	YES	Footed Sidewall	YES
Guide on Bottom	YES		

*Minimum pulley diameters can vary when mechanical lace is installed. Contact our technical team for any fabrication or application questions.

Material Build



90° Butt Splice Instructions

Standard Amigo Press Settings

*Follow basic Amigo operating instructions

Pre-heat Temperature	Pre-heat Time	Weld Time
95°C	300 s	50-55 s

*These settings are a guideline only, every press is different. Test splicing is recommended.

Standard Splices

Butt Splice	Recommended
Soft Hinge Lace	Recommended

Alternative Lace Options

Staple Lace	RS125
Plastic Rivet Lace	Not Recommended

Notes

Homogeneous urethane construction with a single row of drive lugs down the center.





UNIVERSAL BELTING RESOURCE

Industrial Lightweight Belting

1-800-928-9995

Customers@Ubelting.com

Product Data Sheet

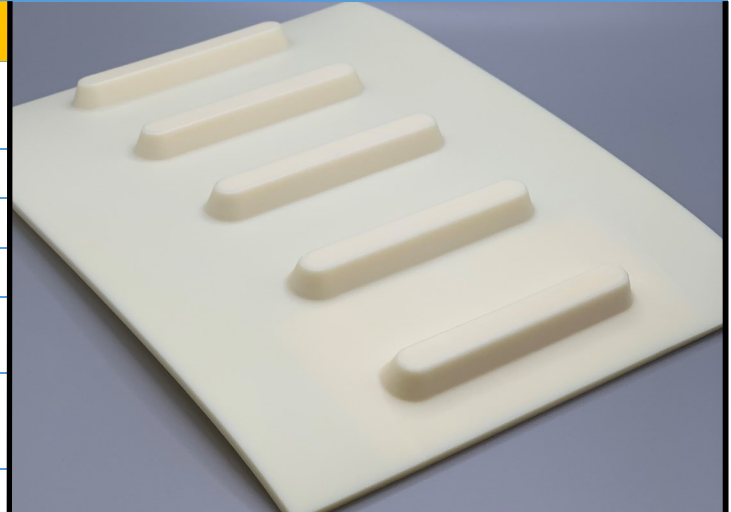
455372

CD3BGSS 24 Beige

PURclean

Material Construction

Composition	Material	TPU-Thermoplastic Polyurethane
	Color	Beige
	Hardness (Shore "A")	98
	Tension Member	TPU Non-Reinforced
Surface Feature	Top	Glossy
	Bottom	Smooth w/center lug 39.7 mm Ctrs.
COF	Top	0.52
	Bottom	0.52



Technical Specifications

Overall Thickness	3.40 mm	0.134 in.
Weight	4.54 kg/m ²	0.93 lbf/ft ²
Maximum Width	610 mm	24 in.
Minimum Pulley/Nose Bar		
Diameter For Endless Butt Splice	80 mm	3.15 in.
Minimum Back Flex	98 mm	3.858 in.
Load For 1% Extension	3.0 N/mm	17.13 lbs/in.
Standard Tension	0.3%	
Operational Temperature Range	-9/71°C	16/160°F

Features

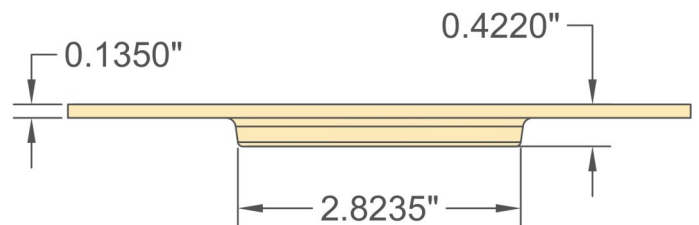
FDA	YES	Anti-Static	NO
USDA Meat and Poultry	YES	Reinforced	NO
USDA Dairy	YES	Elastic	NO

Standard Fabrications

Cleats	YES	Footless Sidewall	YES
Guide on Top	YES	Footed Sidewall	YES
Guide on Bottom	YES		

*Minimum pulley diameters can vary when mechanical lace is installed. Contact our technical team for any fabrication or application questions.

Material Build



90° Butt Splice Instructions

Standard Amigo Press Settings

*Follow basic Amigo operating instructions

Pre-heat Temperature	Pre-heat Time	Weld Time
95°C	300 s	50-55 s

*These settings are a guideline only, every press is different. Test splicing is recommended.

Standard Splices

Butt Splice	Recommended
Soft Hinge Lace	Recommended

Alternative Lace Options

Staple Lace	RS125
Plastic Rivet Lace	Not Recommended

Notes

Homogeneous urethane construction with a single row of drive lugs down the center.





UNIVERSAL BELTING RESOURCE

Industrial Lightweight Belting

1-800-928-9995

Customers@Ubelting.com

Product Data Sheet

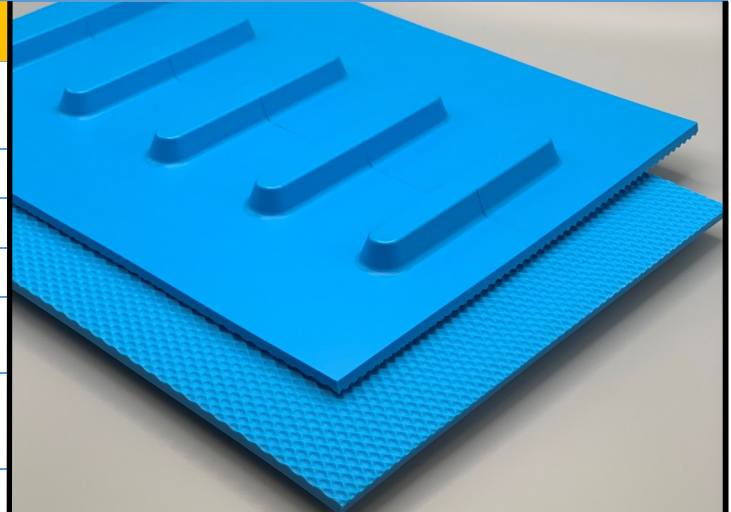
455373

CD3BLSP50 24 Blue

PURclean

Material Construction

Composition	Material	TPU-Thermoplastic Polyurethane
	Color	Sky Blue
	Hardness (Shore "A")	98
	Tension Member	TPU Non-Reinforced
Surface Feature	Top	P50 Round Oval Profile
	Bottom	Smooth w/center lug 39.7 mm Ctrs.
COF	Top	N/A
	Bottom	0.52



Technical Specifications

Overall Thickness	3.40 mm	0.134 in.
Weight	4.54 kg/m ²	0.93 lbf/ft ²
Maximum Width	610 mm	24 in.
Minimum Pulley/Nose Bar Diameter For Endless Butt Splice	80 mm	3.15 in.
Minimum Back Flex	98 mm	3.858 in.
Load For 1% Extension	3.0 N/mm	17.13 lbs/in.
Standard Tension	0.3%	
Operational Temperature Range	-9/71°C	16/160°F

Features

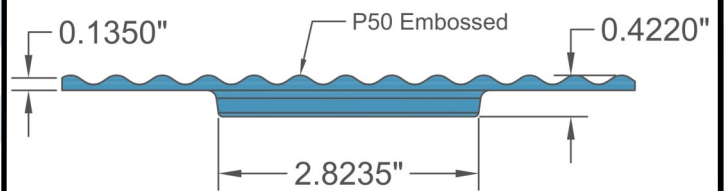
FDA	YES	Anti-Static	NO
USDA Meat and Poultry	YES	Reinforced	NO
USDA Dairy	YES	Elastic	NO

Standard Fabrications

Cleats	YES	Footless Sidewall	YES
Guide on Top	YES	Footed Sidewall	YES
Guide on Bottom	YES		

*Minimum pulley diameters can vary when mechanical lace is installed. Contact our technical team for any fabrication or application questions.

Material Build



90° Butt Splice Instructions

Standard Amigo Press Settings

*Follow basic Amigo operating instructions

Pre-heat Temperature	Pre-heat Time	Weld Time
95°C	300 s	50-55 s

*These settings are a guideline only, every press is different. Test splicing is recommended.

Standard Splices

Butt Splice	Recommended
Soft Hinge Lace	Recommended

Alternative Lace Options

Staple Lace	RS125
Plastic Rivet Lace	Not Recommended

Notes

3mm Center Drive x P50. With round oval profile top surface for excellent release and/or fantastic bite in a homogeneous urethane construction





UNIVERSAL BELTING RESOURCE

Industrial Lightweight Belting

1-800-928-9995

Customers@Ubelting.com

Product Data Sheet

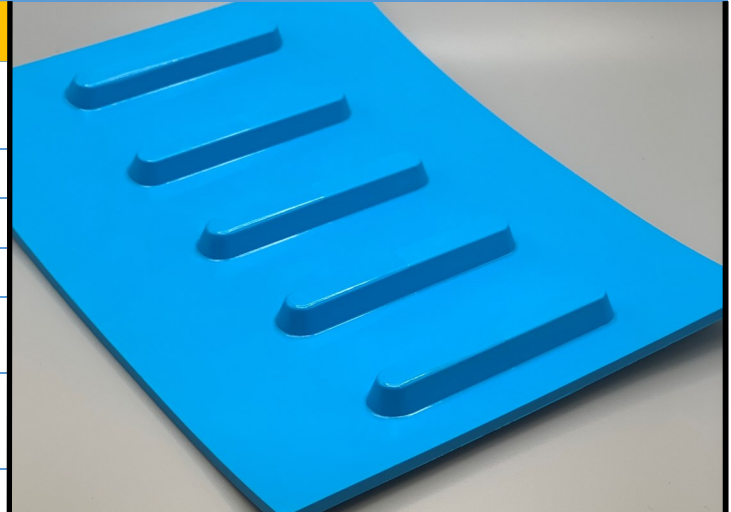
455380

CD3BLSS 30 Blue

PURclean

Material Construction

Composition	Material	TPU-Thermoplastic Polyurethane
	Color	Sky Blue
	Hardness (Shore "A")	98
	Tension Member	TPU Non-Reinforced
Surface Feature	Top	Glossy
	Bottom	Smooth w/center lug 39.7 mm Ctrs.
COF	Top	0.52
	Bottom	0.52



Technical Specifications

Overall Thickness	3.40 mm	0.134 in.
Weight	4.54 kg/m ²	0.93 lbf/ft ²
Maximum Width	762 mm	30 in.
Minimum Pulley/Nose Bar		
Diameter For Endless Butt Splice	80 mm	3.15 in.
Minimum Back Flex	98 mm	3.858 in.
Load For 1% Extension	3.0 N/mm	17.13 lbs/in.
Standard Tension	0.3%	
Operational Temperature Range	-9/71°C	16/160°F

Features

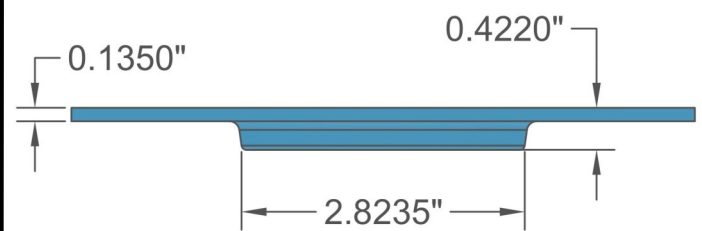
FDA	YES	Anti-Static	NO
USDA Meat and Poultry	YES	Reinforced	NO
USDA Dairy	YES	Elastic	NO

Standard Fabrications

Cleats	YES	Footless Sidewall	YES
Guide on Top	YES	Footed Sidewall	YES
Guide on Bottom	YES		

*Minimum pulley diameters can vary when mechanical lace is installed. Contact our technical team for any fabrication or application questions.

Material Build



90° Butt Splice Instructions

Standard Amigo Press Settings

*Follow basic Amigo operating instructions

Pre-heat Temperature	Pre-heat Time	Weld Time
95°C	300 s	50-55 s

*These settings are a guideline only, every press is different. Test splicing is recommended.

Standard Splices

Butt Splice	Recommended
Soft Hinge Lace	Recommended

Alternative Lace Options

Staple Lace	RS125
Plastic Rivet Lace	Not Recommended

Notes

Homogeneous urethane construction with a single row of drive lugs down the center.





UNIVERSAL BELTING RESOURCE

Industrial Lightweight Belting

1-800-928-9995

Customers@Ubelting.com

Product Data Sheet

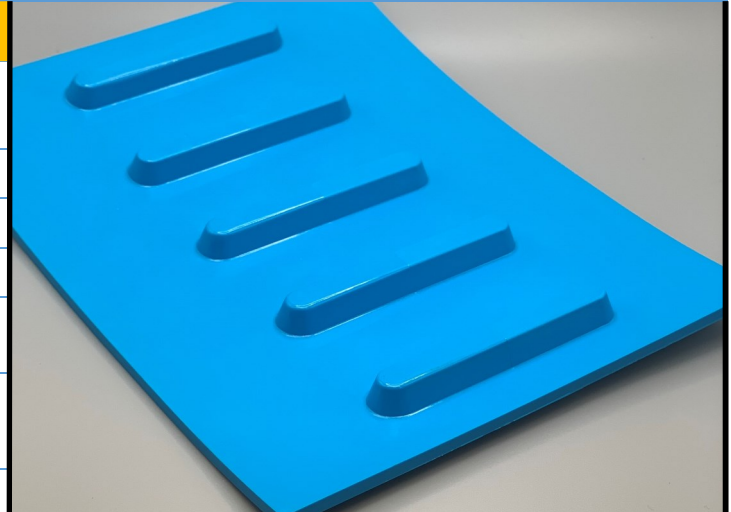
455381

CD3BLSS 30 Dual Lug

PURclean

Material Construction

Composition	Material	TPU-Thermoplastic Polyurethane
	Color	Sky Blue
	Hardness (Shore "A")	98
	Tension Member	TPU Non-Reinforced
Surface Feature	Top	Glossy
	Bottom	Smooth w/center lug 39.7 mm Ctrs.
COF	Top	0.52
	Bottom	0.52



Technical Specifications

Overall Thickness	3.40 mm	0.134 in.
Weight	4.54 kg/m ²	0.93 lbf/ft ²
Maximum Width	762 mm	30 in.
Minimum Pulley/Nose Bar		
Diameter For Endless Butt Splice	80 mm	3.15 in.
Minimum Back Flex	98 mm	3.858 in.
Load For 1% Extension	3.0 N/mm	17.13 lbs/in.
Standard Tension	0.3%	
Operational Temperature Range	-9/71°C	16/160°F

Features

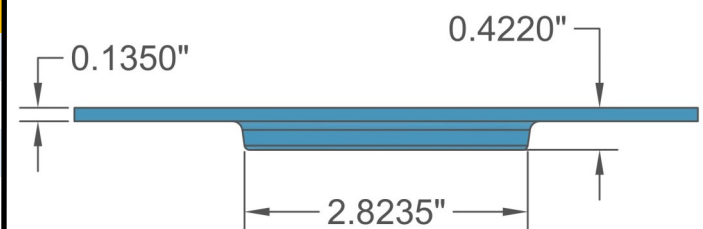
FDA	YES	Anti-Static	NO
USDA Meat and Poultry	YES	Reinforced	NO
USDA Dairy	YES	Elastic	NO

Standard Fabrications

Cleats	YES	Footless Sidewall	YES
Guide on Top	YES	Footed Sidewall	YES
Guide on Bottom	YES		

*Minimum pulley diameters can vary when mechanical lace is installed. Contact our technical team for any fabrication or application questions.

Material Build



90° Butt Splice Instructions

Standard Amigo Press Settings

*Follow basic Amigo operating instructions

Pre-heat Temperature	Pre-heat Time	Weld Time
95°C	300 s	50-55 s

*These settings are a guideline only, every press is different. Test splicing is recommended.

Standard Splices

Butt Splice	Recommended
Soft Hinge Lace	Recommended

Alternative Lace Options

Staple Lace	RS125
Plastic Rivet Lace	Not Recommended

Notes

Homogeneous urethane construction with a two rows of drive lugs on 24.125" centers.



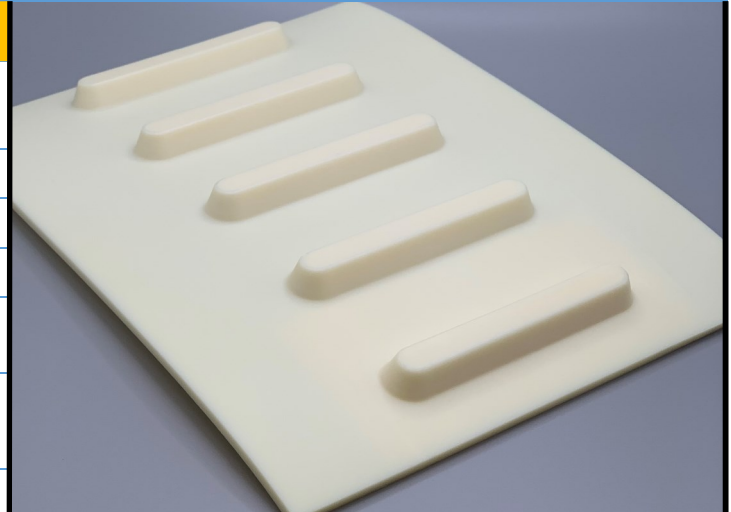
455382

CD3BGSS 30 Beige

PURclean

Material Construction

Composition	Material	TPU-Thermoplastic Polyurethane
	Color	Beige
	Hardness (Shore "A")	98
	Tension Member	TPU Non-Reinforced
Surface Feature	Top	Glossy
	Bottom	Smooth w/center lug 39.7 mm Ctrs.
COF	Top	0.52
	Bottom	0.52



Technical Specifications

Overall Thickness	3.40 mm	0.134 in.
Weight	4.54 kg/m ²	0.93 lbf/ft ²
Maximum Width	762 mm	30 in.
Minimum Pulley/Nose Bar		
Diameter For Endless Butt Splice	80 mm	3.15 in.
Minimum Back Flex	98 mm	3.858 in.
Load For 1% Extension	3.0 N/mm	17.13 lbs/in.
Standard Tension	0.3%	
Operational Temperature Range	-9/71°C	16/160°F

Features

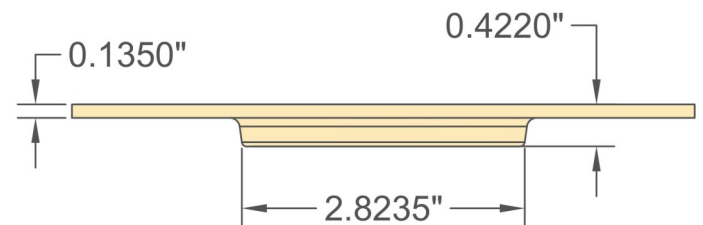
FDA	YES	Anti-Static	NO
USDA Meat and Poultry	YES	Reinforced	NO
USDA Dairy	YES	Elastic	NO

Standard Fabrications

Cleats	YES	Footless Sidewall	YES
Guide on Top	YES	Footed Sidewall	YES
Guide on Bottom	YES		

*Minimum pulley diameters can vary when mechanical lace is installed. Contact our technical team for any fabrication or application questions.

Material Build



90° Butt Splice Instructions

Standard Amigo Press Settings

*Follow basic Amigo operating instructions

Pre-heat Temperature	Pre-heat Time	Weld Time
95°C	300 s	50-55 s

*These settings are a guideline only, every press is different. Test splicing is recommended.

Standard Splices

Butt Splice	Recommended
Soft Hinge Lace	Recommended

Alternative Lace Options

Staple Lace	RS125
Plastic Rivet Lace	Not Recommended

Notes

Homogeneous urethane construction with a single row of drive lugs down the center.





UNIVERSAL BELTING RESOURCE

Industrial Lightweight Belting

1-800-928-9995

Customers@Ubelting.com

Product Data Sheet

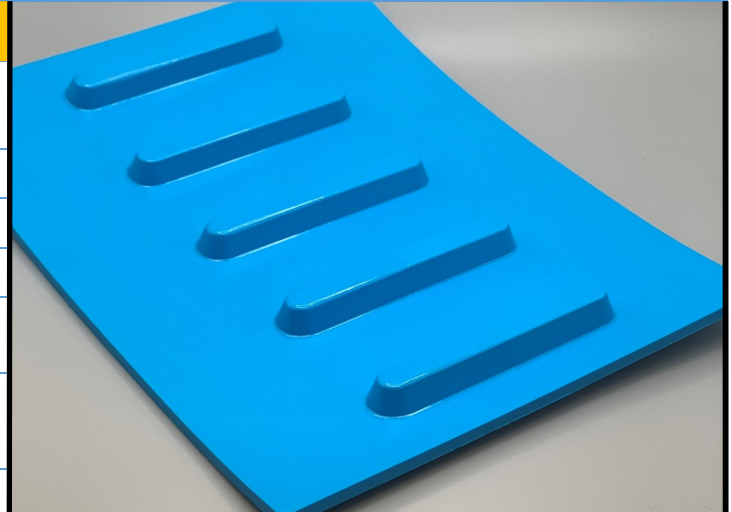
455383

CD3BLSS36 Single Lug

PURclean

Material Construction

Composition	Material	TPU-Thermoplastic Polyurethane
	Color	Sky Blue
	Hardness (Shore "A")	98
	Tension Member	TPU Non-Reinforced
Surface Feature	Top	Glossy
	Bottom	Smooth w/center lug 39.7 mm Ctrs.
COF	Top	0.52
	Bottom	0.52



Technical Specifications

Overall Thickness	3.40 mm	0.134 in.
Weight	4.54 kg/m ²	0.93 lbf/ft ²
Maximum Width	914 mm	36 in.
Minimum Pulley/Nose Bar		
Diameter For Endless Butt Splice	80 mm	3.15 in.
Minimum Back Flex	98 mm	3.858 in.
Load For 1% Extension	3.0 N/mm	17.13 lbs/in.
Standard Tension		0.3%
Operational Temperature Range	-9/71°C	16/160°F

Features

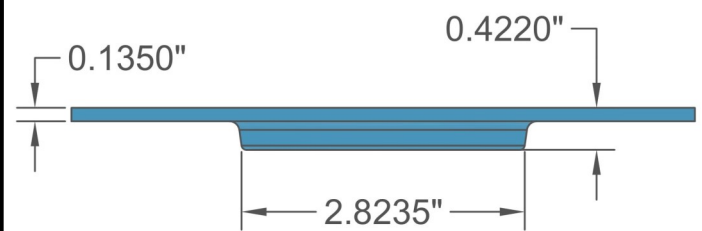
FDA	YES	Anti-Static	NO
USDA Meat and Poultry	YES	Reinforced	NO
USDA Dairy	YES	Elastic	NO

Standard Fabrications

Cleats	YES	Footless Sidewall	YES
Guide on Top	YES	Footed Sidewall	YES
Guide on Bottom	YES		

*Minimum pulley diameters can vary when mechanical lace is installed. Contact our technical team for any fabrication or application questions.

Material Build



90° Butt Splice Instructions

Standard Amigo Press Settings

*Follow basic Amigo operating instructions

Pre-heat Temperature	Pre-heat Time	Weld Time
95°C	300 s	50-55 s

*These settings are a guideline only, every press is different. Test splicing is recommended.

Standard Splices

Butt Splice	Recommended
Soft Hinge Lace	Recommended

Alternative Lace Options

Staple Lace	RS125
Plastic Rivet Lace	Not Recommended

Notes

Homogeneous urethane construction with a single row of drive lugs down the center.





UNIVERSAL BELTING RESOURCE

Industrial Lightweight Belting

1-800-928-9995

Customers@Ubelting.com

Product Data Sheet

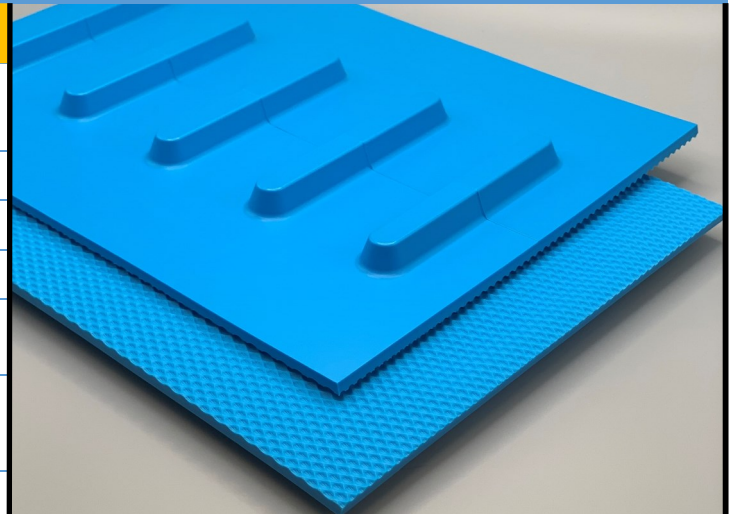
455384

CD3BLSP50 30 Blue

PURclean

Material Construction

Composition	Material	TPU-Thermoplastic Polyurethane
	Color	Sky Blue
	Hardness (Shore "A")	98
	Tension Member	TPU Non-Reinforced
Surface Feature	Top	P50 Round Oval Profile
	Bottom	Smooth w/center lug 39.7 mm Ctrs.
COF	Top	N/A
	Bottom	0.52



Technical Specifications

Overall Thickness	3.40 mm	0.134 in.
Weight	4.54 kg/m ²	0.93 lbf/ft ²
Maximum Width	762 mm	30 in.
Minimum Pulley/Nose Bar Diameter For Endless Butt Splice	80 mm	3.15 in.
Minimum Back Flex	98 mm	3.858 in.
Load For 1% Extension	3.0 N/mm	17.13 lbs/in.
Standard Tension	0.3%	
Operational Temperature Range	-9/71°C	16/160°F

Features

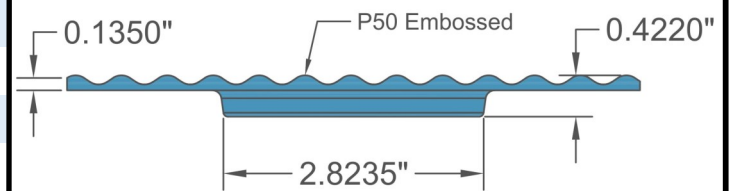
FDA	YES	Anti-Static	NO
USDA Meat and Poultry	YES	Reinforced	NO
USDA Dairy	YES	Elastic	NO

Standard Fabrications

Cleats	YES	Footless Sidewall	YES
Guide on Top	YES	Footed Sidewall	YES
Guide on Bottom	YES		

*Minimum pulley diameters can vary when mechanical lace is installed. Contact our technical team for any fabrication or application questions.

Material Build



90° Butt Splice Instructions

Standard Amigo Press Settings

*Follow basic Amigo operating instructions

Pre-heat Temperature	Pre-heat Time	Weld Time
95°C	300 s	50-55 s

*These settings are a guideline only, every press is different. Test splicing is recommended.

Standard Splices

Butt Splice	Recommended
Soft Hinge Lace	Recommended

Alternative Lace Options

Staple Lace	RS125
Plastic Rivet Lace	Not Recommended

Notes

3mm Center Drive x P50. With round oval profile top surface for excellent release and/or fantastic bite in a homogeneous urethane construction





UNIVERSAL BELTING RESOURCE

Industrial Lightweight Belting

1-800-928-9995

Customers@Ubelting.com

Product Data Sheet

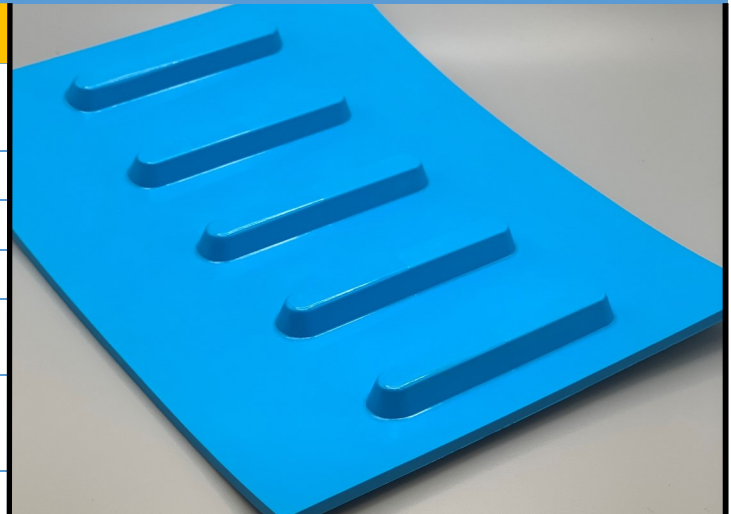
455385

CD3BLSS 48 Blue

PURclean

Material Construction

Composition	Material	TPU-Thermoplastic Polyurethane
	Color	Sky Blue
	Hardness (Shore "A")	98
	Tension Member	TPU Non-Reinforced
Surface Feature	Top	Glossy
	Bottom	Smooth w/center lug 39.7 mm Ctrs.
COF	Top	0.52
	Bottom	0.52



Technical Specifications

Overall Thickness	3.40 mm	0.134 in.
Weight	4.54 kg/m ²	0.93 lbf/ft ²
Maximum Width	1,219 mm	48 in.
Minimum Pulley/Nose Bar		
Diameter For Endless Butt Splice	80 mm	3.15 in.
Minimum Back Flex	98 mm	3.858 in.
Load For 1% Extension	3.0 N/mm	17.13 lbs/in.
Standard Tension	0.3%	
Operational Temperature Range	-9/71°C	16/160°F

Features

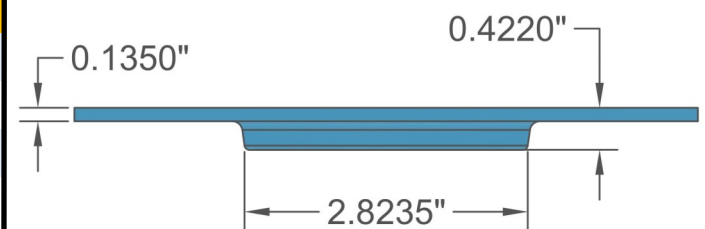
FDA	YES	Anti-Static	NO
USDA Meat and Poultry	YES	Reinforced	NO
USDA Dairy	YES	Elastic	NO

Standard Fabrications

Cleats	YES	Footless Sidewall	YES
Guide on Top	YES	Footed Sidewall	YES
Guide on Bottom	YES		

*Minimum pulley diameters can vary when mechanical lace is installed. Contact our technical team for any fabrication or application questions.

Material Build



90° Butt Splice Instructions

Standard Amigo Press Settings

*Follow basic Amigo operating instructions

Pre-heat Temperature	Pre-heat Time	Weld Time
95°C	300 s	50-55 s

*These settings are a guideline only, every press is different. Test splicing is recommended.

Standard Splices

Butt Splice	Recommended
Soft Hinge Lace	Recommended

Alternative Lace Options

Staple Lace	RS125
Plastic Rivet Lace	Not Recommended

Notes

Homogeneous urethane construction with a two rows of drive lugs on 24.125" centers.





UNIVERSAL BELTING RESOURCE

Industrial Lightweight Belting

1-800-928-9995

Customers@Ubelting.com

Product Data Sheet

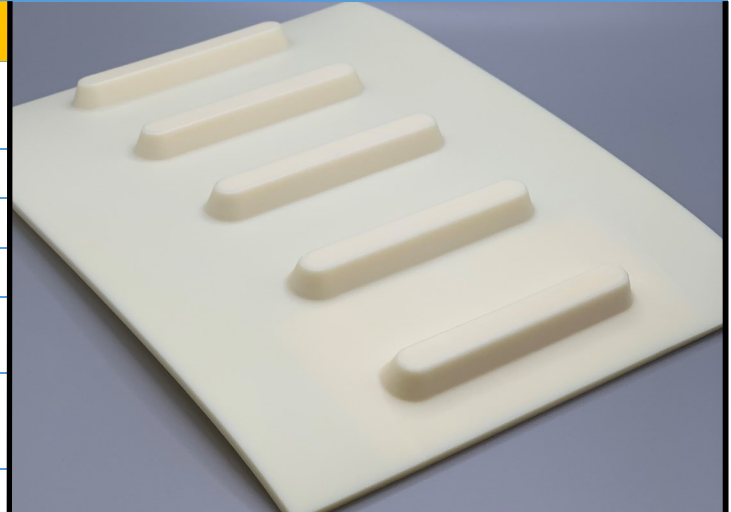
455387

CD3BGSS 48 Beige

PURclean

Material Construction

Composition	Material	TPU-Thermoplastic Polyurethane
	Color	Beige
	Hardness (Shore "A")	98
	Tension Member	TPU Non-Reinforced
Surface Feature	Top	Glossy
	Bottom	Smooth w/center lug 39.7 mm Ctrs.
COF	Top	0.52
	Bottom	0.52



Technical Specifications

Overall Thickness	3.40 mm	0.134 in.
Weight	4.54 kg/m ²	0.93 lbf/ft ²
Maximum Width	1,219 mm	48 in.
Minimum Pulley/Nose Bar		
Diameter For Endless Butt Splice	80 mm	3.15 in.
Minimum Back Flex	98 mm	3.858 in.
Load For 1% Extension	3.0 N/mm	17.13 lbs/in.
Standard Tension	0.3%	
Operational Temperature Range	-9/71°C	16/160°F

Features

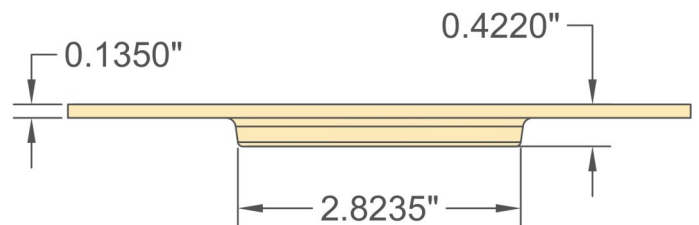
FDA	YES	Anti-Static	NO
USDA Meat and Poultry	YES	Reinforced	NO
USDA Dairy	YES	Elastic	NO

Standard Fabrications

Cleats	YES	Footless Sidewall	YES
Guide on Top	YES	Footed Sidewall	YES
Guide on Bottom	YES		

*Minimum pulley diameters can vary when mechanical lace is installed. Contact our technical team for any fabrication or application questions.

Material Build



90° Butt Splice Instructions

Standard Amigo Press Settings

*Follow basic Amigo operating instructions

Pre-heat Temperature	Pre-heat Time	Weld Time
95°C	300 s	50-55 s

*These settings are a guideline only, every press is different. Test splicing is recommended.

Standard Splices

Butt Splice	Recommended
Soft Hinge Lace	Recommended

Alternative Lace Options

Staple Lace	RS125
Plastic Rivet Lace	Not Recommended

Notes

Homogeneous urethane construction with a two rows of drive lugs on 24.125" centers.





UNIVERSAL BELTING RESOURCE

Industrial Lightweight Belting

1-800-928-9995

Customers@Ubelting.com

Product Data Sheet

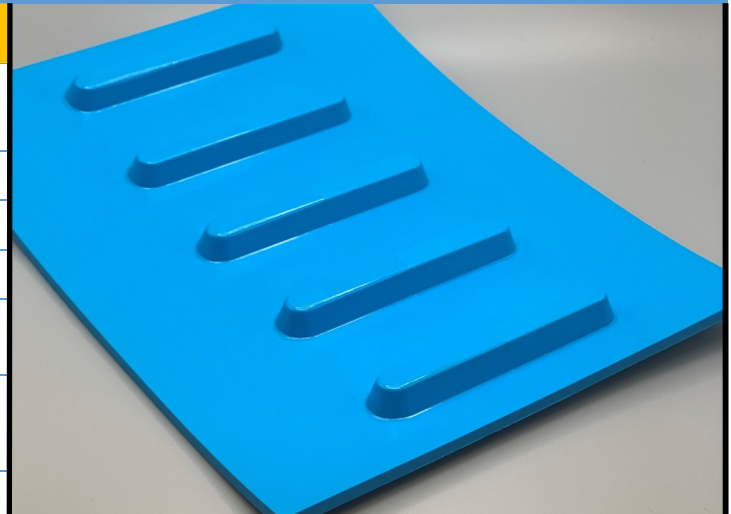
455390

CD3BLSS 60 Blue

PURclean

Material Construction

Composition	Material	TPU-Thermoplastic Polyurethane
	Color	Sky Blue
	Hardness (Shore "A")	98
	Tension Member	TPU Non-Reinforced
Surface Feature	Top	Glossy
	Bottom	Smooth w/center lug 39.7 mm Ctrs.
COF	Top	0.52
	Bottom	0.52



Technical Specifications

Overall Thickness	3.40 mm	0.134 in.
Weight	4.54 kg/m ²	0.93 lbf/ft ²
Maximum Width	1,524 mm	60 in.
Minimum Pulley/Nose Bar		
Diameter For Endless Butt Splice	80 mm	3.15 in.
Minimum Back Flex	98 mm	3.858 in.
Load For 1% Extension	3.0 N/mm	17.13 lbs/in.
Standard Tension	0.3%	
Operational Temperature Range	-9/71°C	16/160°F

Features

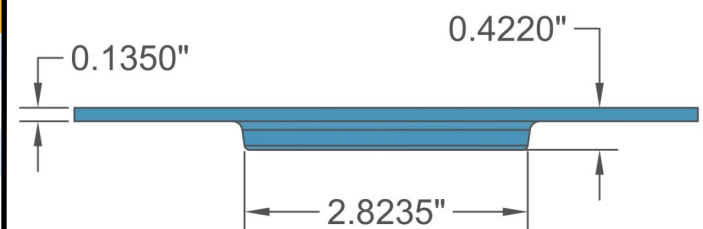
FDA	YES	Anti-Static	NO
USDA Meat and Poultry	YES	Reinforced	NO
USDA Dairy	YES	Elastic	NO

Standard Fabrications

Cleats	YES	Footless Sidewall	YES
Guide on Top	YES	Footed Sidewall	YES
Guide on Bottom	YES		

*Minimum pulley diameters can vary when mechanical lace is installed. Contact our technical team for any fabrication or application questions.

Material Build



90° Butt Splice Instructions

Standard Amigo Press Settings

*Follow basic Amigo operating instructions

Pre-heat Temperature	Pre-heat Time	Weld Time
95°C	300 s	50-55 s

*These settings are a guideline only, every press is different. Test splicing is recommended.

Standard Splices

Butt Splice	Recommended
Soft Hinge Lace	Recommended

Alternative Lace Options

Staple Lace	RS125
Plastic Rivet Lace	Not Recommended

Notes

Homogeneous urethane construction with a two rows of drive lugs on 24.125" centers.





UNIVERSAL BELTING RESOURCE

Industrial Lightweight Belting

1-800-928-9995

Customers@Ubelting.com

Product Data Sheet

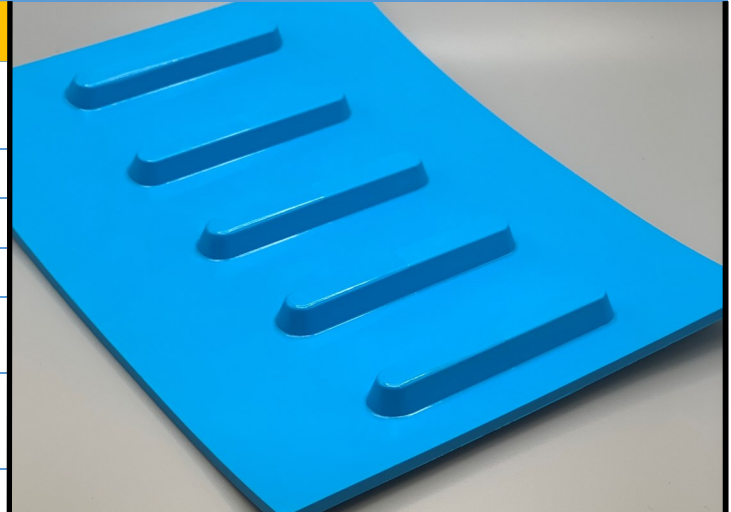
455391

CD3BLSS 31-59 Blue

PURclean

Material Construction

Composition	Material	TPU-Thermoplastic Polyurethane
	Color	Sky Blue
	Hardness (Shore "A")	98
	Tension Member	TPU Non-Reinforced
Surface Feature	Top	Glossy
	Bottom	Smooth w/center lug 39.7 mm Ctrs.
COF	Top	0.52
	Bottom	0.52



Technical Specifications

Overall Thickness	3.40 mm	0.134 in.
Weight	4.54 kg/m ²	0.93 lbf/ft ²
Maximum Width	1,499 mm	59 in.
Minimum Pulley/Nose Bar Diameter For Endless Butt Splice	80 mm	3.15 in.
Minimum Back Flex	98 mm	3.858 in.
Load For 1% Extension	3.0 N/mm	17.13 lbs/in.
Standard Tension	0.3%	
Operational Temperature Range	-9/71°C	16/160°F

Features

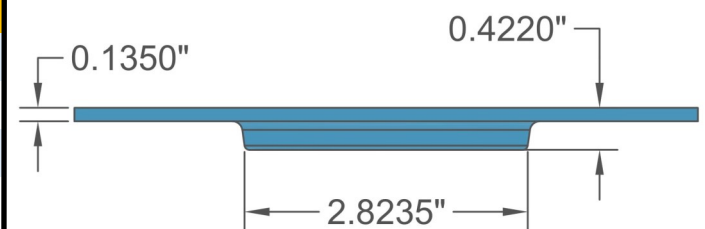
FDA	YES	Anti-Static	NO
USDA Meat and Poultry	YES	Reinforced	NO
USDA Dairy	YES	Elastic	NO

Standard Fabrications

Cleats	YES	Footless Sidewall	YES
Guide on Top	YES	Footed Sidewall	YES
Guide on Bottom	YES		

*Minimum pulley diameters can vary when mechanical lace is installed. Contact our technical team for any fabrication or application questions.

Material Build



90° Butt Splice Instructions

Standard Amigo Press Settings

*Follow basic Amigo operating instructions

Pre-heat Temperature	Pre-heat Time	Weld Time
95°C	300 s	50-55 s

*These settings are a guideline only, every press is different. Test splicing is recommended.

Standard Splices

Butt Splice	Recommended
Soft Hinge Lace	Recommended

Alternative Lace Options

Staple Lace	RS125
Plastic Rivet Lace	Not Recommended

Notes

Homogeneous urethane construction with a two rows of drive lugs on 24.125" centers.



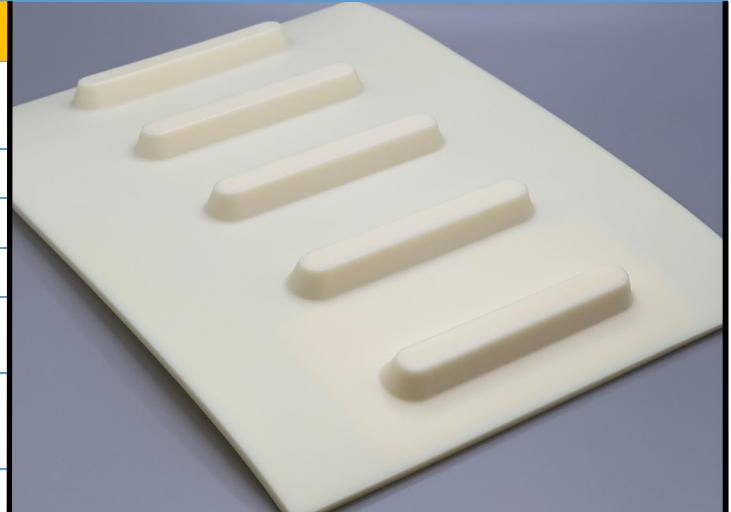
455392

CD3BGSS 60 Beige

PURclean

Material Construction

Composition	Material	TPU-Thermoplastic Polyurethane
	Color	Beige
	Hardness (Shore "A")	98
	Tension Member	TPU Non-Reinforced
Surface Feature	Top	Glossy
	Bottom	Smooth w/center lug 39.7 mm Ctrs.
COF	Top	0.52
	Bottom	0.52



Technical Specifications

Overall Thickness	3.40 mm	0.134 in.
Weight	4.54 kg/m ²	0.93 lbf/ft ²
Maximum Width	1,524 mm	60 in.
Minimum Pulley/Nose Bar		
Diameter For Endless Butt Splice	80 mm	3.15 in.
Minimum Back Flex	98 mm	3.858 in.
Load For 1% Extension	3.0 N/mm	17.13 lbs/in.
Standard Tension	0.3%	
Operational Temperature Range	-9/71°C	16/160°F

Features

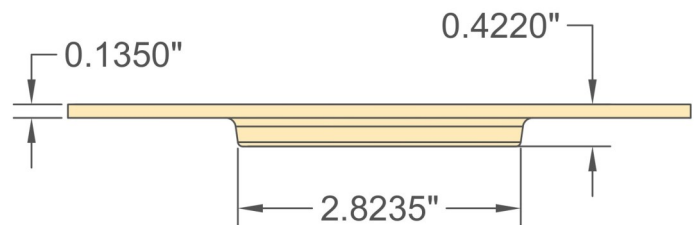
FDA	YES	Anti-Static	NO
USDA Meat and Poultry	YES	Reinforced	NO
USDA Dairy	YES	Elastic	NO

Standard Fabrications

Cleats	YES	Footless Sidewall	YES
Guide on Top	YES	Footed Sidewall	YES
Guide on Bottom	YES		

*Minimum pulley diameters can vary when mechanical lace is installed. Contact our technical team for any fabrication or application questions.

Material Build



90° Butt Splice Instructions

Standard Amigo Press Settings

*Follow basic Amigo operating instructions

Pre-heat Temperature	Pre-heat Time	Weld Time
95°C	300 s	50-55 s

*These settings are a guideline only, every press is different. Test splicing is recommended.

Standard Splices

Butt Splice	Recommended
Soft Hinge Lace	Recommended

Alternative Lace Options

Staple Lace	RS125
Plastic Rivet Lace	Not Recommended

Notes

Homogeneous urethane construction with a two rows of drive lugs on 24.125" centers.



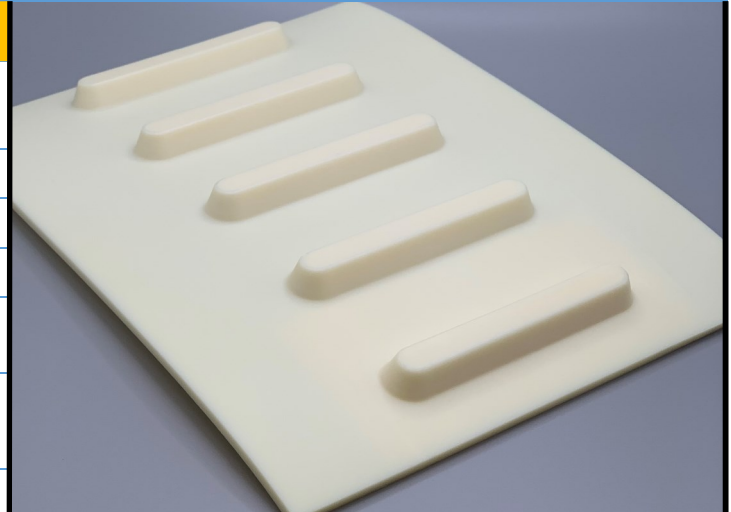
455393

CD3BGSS 31-59 Beige

PURclean

Material Construction

Composition	Material	TPU-Thermoplastic Polyurethane
	Color	Beige
	Hardness (Shore "A")	98
	Tension Member	TPU Non-Reinforced
Surface Feature	Top	Glossy
	Bottom	Smooth w/center lug 39.7 mm Ctrs.
COF	Top	0.52
	Bottom	0.52



Technical Specifications

Overall Thickness	3.40 mm	0.134 in.
Weight	4.54 kg/m ²	0.93 lbf/ft ²
Maximum Width	1,499 mm	59 in.
Minimum Pulley/Nose Bar		
Diameter For Endless Butt Splice	80 mm	3.15 in.
Minimum Back Flex	98 mm	3.858 in.
Load For 1% Extension	3.0 N/mm	17.13 lbs/in.
Standard Tension		0.3%
Operational Temperature Range	-9/71°C	16/160°F

Features

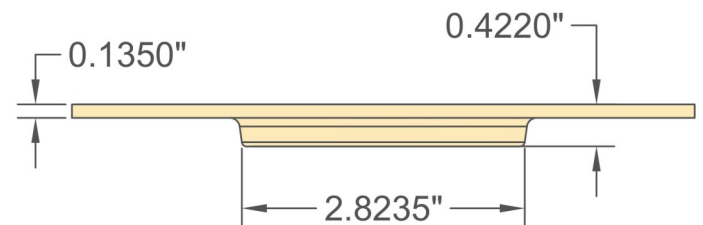
FDA	YES	Anti-Static	NO
USDA Meat and Poultry	YES	Reinforced	NO
USDA Dairy	YES	Elastic	NO

Standard Fabrications

Cleats	YES	Footless Sidewall	YES
Guide on Top	YES	Footed Sidewall	YES
Guide on Bottom	YES		

*Minimum pulley diameters can vary when mechanical lace is installed. Contact our technical team for any fabrication or application questions.

Material Build



90° Butt Splice Instructions

Standard Amigo Press Settings

*Follow basic Amigo operating instructions

Pre-heat Temperature	Pre-heat Time	Weld Time
95°C	300 s	50-55 s

*These settings are a guideline only, every press is different. Test splicing is recommended.

Standard Splices

Butt Splice	Recommended
Soft Hinge Lace	Recommended

Alternative Lace Options

Staple Lace	RS125
Plastic Rivet Lace	Not Recommended

Notes

Homogeneous urethane construction with a two rows of drive lugs on 24.125" centers.





UNIVERSAL BELTING RESOURCE

Industrial Lightweight Belting

1-800-928-9995

Customers@Ubelting.com

Product Data Sheet

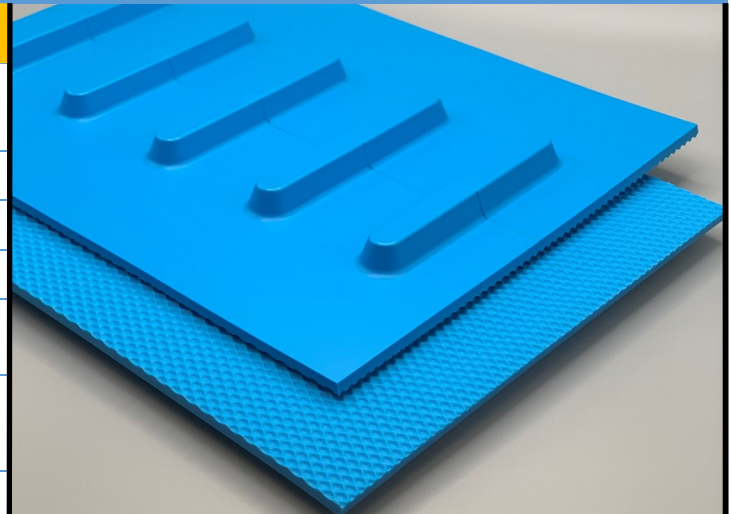
455394

CD3BLSP50 31-59 Blue

PURclean

Material Construction

Composition	Material	TPU-Thermoplastic Polyurethane
	Color	Sky Blue
	Hardness (Shore "A")	98
	Tension Member	TPU Non-Reinforced
Surface Feature	Top	P50 Round Oval Profile
	Bottom	Smooth w/center lug 39.7 mm Ctrs.
COF	Top	N/A
	Bottom	0.52



Technical Specifications

Overall Thickness	3.40 mm	0.134 in.
Weight	4.54 kg/m ²	0.93 lbf/ft ²
Maximum Width	1,499 mm	59 in.
Minimum Pulley/Nose Bar Diameter For Endless Butt Splice	80 mm	3.15 in.
Minimum Back Flex	98 mm	3.858 in.
Load For 1% Extension	3.0 N/mm	17.13 lbs/in.
Standard Tension	0.3%	
Operational Temperature Range	-9/71°C	16/160°F

Features

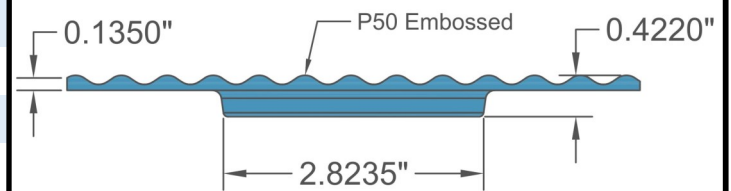
FDA	YES	Anti-Static	NO
USDA Meat and Poultry	YES	Reinforced	NO
USDA Dairy	YES	Elastic	NO

Standard Fabrications

Cleats	YES	Footless Sidewall	YES
Guide on Top	YES	Footed Sidewall	YES
Guide on Bottom	YES		

*Minimum pulley diameters can vary when mechanical lace is installed. Contact our technical team for any fabrication or application questions.

Material Build



90° Butt Splice Instructions

Standard Amigo Press Settings

*Follow basic Amigo operating instructions

Pre-heat Temperature	Pre-heat Time	Weld Time
95°C	300 s	50-55 s

*These settings are a guideline only, every press is different. Test splicing is recommended.

Standard Splices

Butt Splice	Recommended
Soft Hinge Lace	Recommended

Alternative Lace Options

Staple Lace	RS125
Plastic Rivet Lace	Not Recommended

Notes

3mm Center Drive x P50. With round oval profile top surface for excellent release and/or fantastic bite in a homogeneous urethane construction

