



BELTING SPECS AND SPLICING INSTRUCTIONS

Polyvinyl Chloride (PVC) Range

Universal Belting Resource

Phone: 800-928-9995

Email: Customers@Ubelting.com

Address: 2 Industrial Park Rd., Carmichaels PA 15320

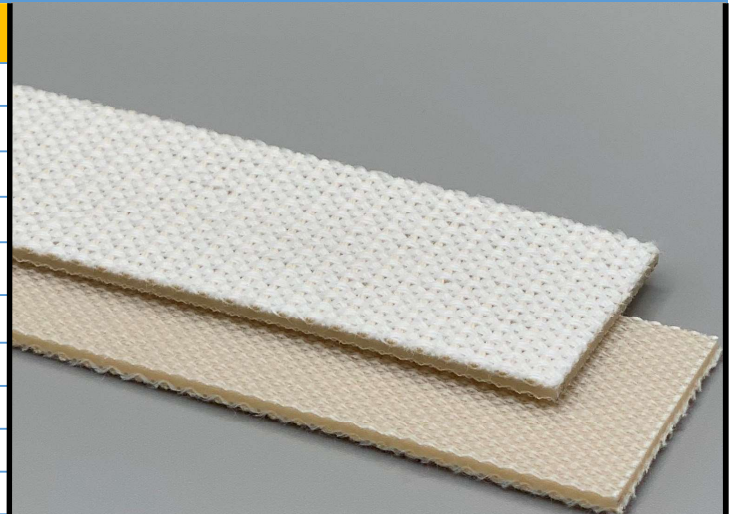
140200

0/2EC-0 PET/Cotton Bare White

PVC

Material Construction

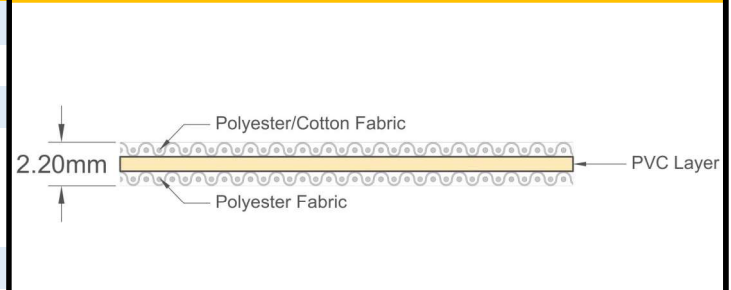
| | | | |
|----------------|-----------|-------------------------|------------------|
| Surface | Conveying | Material | Polyester/Cotton |
| | | Profile | Bare |
| | | Color | Beige |
| | | Coefficient of friction | N/A |
| Tension Member | | Material | Polyester Fabric |
| | | Plies | 2 |
| Underside | | Material | Polyester Fabric |
| | | Profile | Bare |
| | | Color | Beige |
| | | Coefficient of friction | 0.25 |



Technical Specifications

| | | |
|---|-----------------------|---------------------------|
| Overall Thickness | 2.20 mm | 0.087 in. |
| Weight | 2.1 kg/m ² | 0.43 lbs./ft ² |
| Maximum Width | 2,280 mm | 89.75 in. |
| Minimum Pulley/Nose Bar | | |
| Diameter for Recommended Endless Splice | 25 mm | 0.984 in. |
| Minimum Back Flex | 25 mm | 0.984 in. |
| Load for 1% Extension (Dynamic) | 4 N/mm | 22.84 lbs./in. |
| Standard Tension | | 0.5 % |
| Product Operational Temperature Range | -10/80 °C | 14/176 °F |
| Cover Durometer | N/A Shore A | |

Material Build



Features

| | | | |
|-----------------------|-----|-----------------|----|
| FDA | YES | Anti-Static | NO |
| USDA Meat and Poultry | NO | Flame Retardant | NO |
| USDA Dairy | NO | Cross Rigid | NO |
| Anti-Microbial | NO | | |

Standard Fabrications

| | | | |
|------------------------|-----|-------------------------|-----|
| Longitudinal Splice | YES | Cleats | NO |
| Guide Applied to Cover | NO | Guide Applied to Bottom | YES |
| Footed Sidewall | NO | Footless Sidewall | NO |
| Edge Capped | NO | Plastic Spiral Lace | YES |

Notes

2 Ply Corse Structured Polyester / Cotton Top, Polyester Bottom, Bare x Bare With PVC Inner Layer. Great For Dough Applications.

*Minimum pulley diameters can vary when mechanical lace is installed. Contact our technical team for any fabrication or application questions.

Splicing Instructions

High Speed Press Settings

| Pressure (psi) | Temperature | | Press Time | Foil Position | Foil | Release Top/Bot. |
|----------------|----------------|----------------|------------|---------------|------|---------------------------|
| | Top | Bottom | | | | |
| 20 | 175°C 347°F | 175°C 347°F | 90 s | N/A | None | Silicone/ Rough Teflon |

Water Cooled Press Settings

| Pressure (psi) | Temperature | | Press Time | Foil Position | Foil | Release Top/Bot. |
|----------------|----------------|----------------|------------|---------------|------|---------------------------|
| | Top | Bottom | | | | |
| 20 | 170°C 338°F | 170°C 338°F | 30 s | N/A | None | Silicone/ Rough Teflon |

*These settings are a guideline only, every press is different. Test splicing is recommended.

Standard Splices

| | |
|--------------|---------------|
| Endless | Single Finger |
| Clipper Lace | UCM36 SP |
| Staple Lace | RS62 |



140205

0/2EC-0 PET/Cotton White

PVC

Material Construction

| | | | |
|----------------|-----------|-------------------------|-------------------------|
| Surface | Conveying | Material | Polyester/Cotton |
| | | Profile | Bare |
| | | Color | Beige |
| | | Coefficient of friction | 0.15 |
| Tension Member | | Material | Polyester/Cotton Fabric |
| | | Plies | 2 |
| Underside | | Material | Polyester/Cotton |
| | | Profile | Bare |
| | | Color | Beige |
| | | Coefficient of friction | 0.15 |



Technical Specifications

| | | |
|---|-----------------------|---------------------------|
| Overall Thickness | 2.70 mm | 0.106 in. |
| Weight | 2.4 kg/m ² | 0.49 lbs./ft ² |
| Maximum Width | 2,000 mm | 78.75 in. |
| Minimum Pulley/Nose Bar | | |
| Diameter for Recommended Endless Splice | 50 mm | 1.969 in. |
| Minimum Back Flex | 75 mm | 2.953 in. |
| Load for 1% Extension (Dynamic) | 3 N/mm | 17.13 lbs./in. |
| Standard Tension | | 0.5 % |
| Product Operational Temperature Range | -10/70 °C | 14/158 °F |
| Cover Durometer | N/A Shore A | |

Material Build



Features

| | | | |
|-----------------------|-----|-----------------|-----|
| FDA | YES | Anti-Static | NO |
| USDA Meat and Poultry | NO | Flame Retardant | NO |
| USDA Dairy | NO | Cross Rigid | YES |
| Anti-Microbial | NO | | |

Standard Fabrications

| | | | |
|------------------------|-----|-------------------------|-----|
| Longitudinal Splice | YES | Cleats | NO |
| Guide Applied to Cover | NO | Guide Applied to Bottom | YES |
| Footed Sidewall | NO | Footless Sidewall | NO |
| Edge Capped | NO | Plastic Spiral Lace | YES |

Notes

2 Ply Corse Structured Polyester / Cotton Bare x Bare With PVC Inner Layer. Great For Dough Applications.

*Minimum pulley diameters can vary when mechanical lace is installed. Contact our technical team for any fabrication or application questions.

Splicing Instructions

High Speed Press Settings

| Pressure (psi) | Temperature | | Press Time | Foil Position | Foil | Release Top/Bot. |
|----------------|----------------|----------------|------------|---------------|------|---------------------------|
| | Top | Bottom | | | | |
| 20 | 175°C 347°F | 175°C 347°F | 90 s | N/A | None | Silicone/ Rough Teflon |

Water Cooled Press Settings

| Pressure (psi) | Temperature | | Press Time | Foil Position | Foil | Release Top/Bot. |
|----------------|----------------|----------------|------------|---------------|------|---------------------------|
| | Top | Bottom | | | | |
| 20 | 170°C 338°F | 170°C 338°F | 30 s | N/A | None | Silicone/ Rough Teflon |

*These settings are a guideline only, every press is different. Test splicing is recommended.

Standard Splices

| | |
|--------------|---------------|
| Endless | Single Finger |
| Clipper Lace | UCM36 |
| Staple Lace | RS62 |



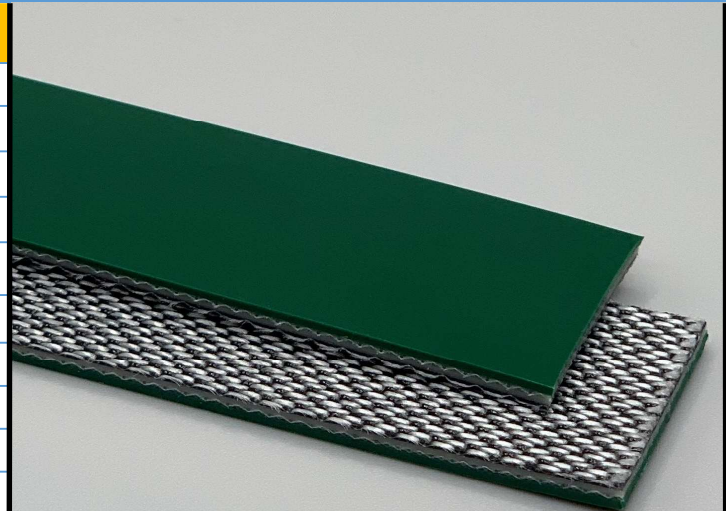
200282

2P120/10/0 H AS Green

PVC

Material Construction

| | | | |
|----------------|-----------|-------------------------|-------------------------|
| Surface | Conveying | Material | PVC |
| | | Profile | Glossy |
| | | Color | Green |
| | | Coefficient of friction | N/A |
| Tension Member | | Material | Polyester Fabric |
| | | Plies | 2 |
| Underside | | Material | Whisper weave polyester |
| | | Profile | Low Noise |
| | | Color | Black/Gray |
| | | Coefficient of friction | 0.25 |



Technical Specifications

| | | |
|---|---------------------|---------------------------|
| Overall Thickness | 2.50 mm | 0.098 in. |
| Weight | 3 kg/m ² | 0.61 lbs./ft ² |
| Maximum Width | 3,200 mm | 126 in. |
| Minimum Pulley/Nose Bar | | |
| Diameter for Recommended Endless Splice | 40 mm | 1.575 in. |
| Minimum Back Flex | 50 mm | 1.969 in. |
| Load for 1% Extension (Dynamic) | 8 N/mm | 45.68 lbs./in. |
| Standard Tension | | 0.5 % |
| Product Operational Temperature Range | -10/70 °C | 14/158 °F |
| Cover Durometer | 90 Shore A | |

Features

| | | | |
|-----------------------|----|-----------------|-----|
| FDA | NO | Anti-Static | YES |
| USDA Meat and Poultry | NO | Flame Retardant | NO |
| USDA Dairy | NO | Cross Rigid | YES |
| Anti-Microbial | NO | | |

Standard Fabrications

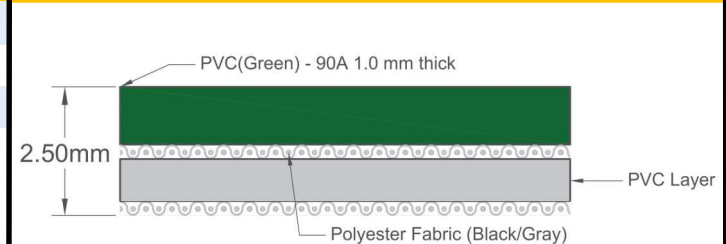
| | | | |
|------------------------|-----|-------------------------|-----|
| Longitudinal Splice | YES | Cleats | YES |
| Guide Applied to Cover | YES | Guide Applied to Bottom | YES |
| Footed Sidewall | YES | Footless Sidewall | NO |
| Edge Capped | YES | Plastic Spiral Lace | YES |

Notes

Hard abrasive resistant PVC cover and quiet running low noise bottom fabric

*Minimum pulley diameters can vary when mechanical lace is installed. Contact our technical team for any fabrication or application questions.

Material Build



Splicing Instructions

High Speed Press Settings

| Pressure (psi) | Temperature | | Press Time | Foil Position | Foil | Release Top/Bot. |
|----------------|----------------|----------------|------------|---------------|-----------|--------------------|
| | Top | Bottom | | | | |
| 30 | 175°C 347°F | 175°C 347°F | 180 s | Top | Green PVC | Gloss/Rough Teflon |

Water Cooled Press Settings

| Pressure (psi) | Temperature | | Press Time | Foil Position | Foil | Release Top/Bot. |
|----------------|----------------|----------------|------------|---------------|-----------|--------------------|
| | Top | Bottom | | | | |
| 30 | 175°C 347°F | 175°C 347°F | 120 s | Top | Green PVC | Gloss/Rough Teflon |

*These settings are a guideline only, every press is different. Test splicing is recommended.

Standard Splices

| | |
|--------------|---------------|
| Endless | Single Finger |
| Clipper Lace | UCM36 |
| Staple Lace | RS62 |



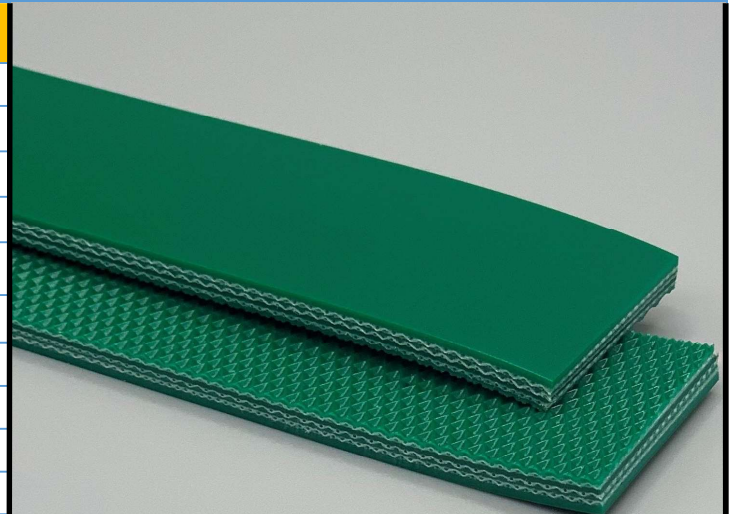
200600

3P150/07/07 STR Light Green

PVC

Material Construction

| | | | |
|----------------|-----------|-------------------------|-----------------------|
| Surface | Conveying | Material | PVC |
| | | Profile | Matt |
| | | Color | Green |
| | | Coefficient of friction | N/A |
| Tension Member | | Material | Polyester Fabric |
| | | Plies | 3 |
| Underside | | Material | PVC |
| | | Profile | Mini Negative Pyramid |
| | | Color | Green |
| | | Coefficient of friction | 0.80 |



Technical Specifications

| | | |
|---|-----------------------|---------------------------|
| Overall Thickness | 3.90 mm | 0.154 in. |
| Weight | 4.2 kg/m ² | 0.86 lbs./ft ² |
| Maximum Width | 3,000 mm | 118.125 in. |
| Minimum Pulley/Nose Bar | | |
| Diameter for Recommended Endless Splice | 150 mm | 5.906 in. |
| Minimum Back Flex | 180 mm | 7.087 in. |
| Load for 1% Extension (Dynamic) | 12 N/mm | 68.52 lbs./in. |
| Standard Tension | | 0.5 % |
| Product Operational Temperature Range | -10/70 °C | 14/158 °F |
| Cover Durometer | 85 Shore A | |

Features

| | | | |
|-----------------------|----|-----------------|-----|
| FDA | NO | Anti-Static | NO |
| USDA Meat and Poultry | NO | Flame Retardant | NO |
| USDA Dairy | NO | Cross Rigid | YES |
| Anti-Microbial | NO | | |

Standard Fabrications

| | | | |
|------------------------|-----|-------------------------|-----|
| Longitudinal Splice | YES | Cleats | YES |
| Guide Applied to Cover | YES | Guide Applied to Bottom | YES |
| Footed Sidewall | YES | Footless Sidewall | NO |
| Edge Capped | YES | Plastic Spiral Lace | YES |

Notes

3 Ply Monofilament - cover both sides

*Minimum pulley diameters can vary when mechanical lace is installed. Contact our technical team for any fabrication or application questions.

Material Build



Splicing Instructions

High Speed Press Settings

| Pressure (psi) | Temperature | | Press Time | Foil Position | Foil | Release Top/Bot. |
|----------------|----------------|----------------|------------|---------------|------|------------------|
| | Top | Bottom | | | | |
| N/A | N/A°C N/A°F | N/A°C N/A°F | N/A s | N/A | N/A | N/A/N/A |

Water Cooled Press Settings

| Pressure (psi) | Temperature | | Press Time | Foil Position | Foil | Release Top/Bot. |
|----------------|----------------|----------------|------------|---------------|-----------------|--------------------|
| | Top | Bottom | | | | |
| 30 | 175°C 347°F | 175°C 347°F | 180 s | Top | Light Green PVC | Matte/Rough Teflon |

*These settings are a guideline only, every press is different. Test splicing is recommended.

Standard Splices

| | |
|--------------|--------------------|
| Endless | Finger Over Finger |
| Clipper Lace | UX-1 |
| Staple Lace | RS125 |



200702

2PC80/0/0 White

PVC

Material Construction

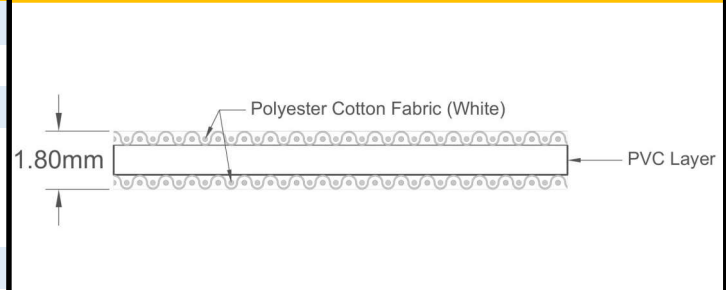
| | | | |
|----------------|-------------------------|-------------------------|------------------|
| Surface | Conveying | Material | Polyester cotton |
| | | Profile | Bare |
| | | Color | White |
| | | Coefficient of friction | 0.25 |
| Tension Member | Material | Polyester/Cotton Fabric | |
| | Plies | 2 | |
| Underside | Material | Polyester cotton | |
| | Profile | Bare | |
| | Color | White | |
| | Coefficient of friction | 0.25 | |



Technical Specifications

| | | |
|---|-----------------------|---------------------------|
| Overall Thickness | 1.80 mm | 0.071 in. |
| Weight | 1.9 kg/m ² | 0.39 lbs./ft ² |
| Maximum Width | 3,099 mm | 122 in. |
| Minimum Pulley/Nose Bar | | |
| Diameter for Recommended Endless Splice | 20 mm | 0.787 in. |
| Minimum Back Flex | 20 mm | 0.787 in. |
| Load for 1% Extension (Dynamic) | 8 N/mm | 45.68 lbs./in. |
| Standard Tension | | 0.5 % |
| Product Operational Temperature Range | -10/90 °C | 14/194 °F |
| Cover Durometer | N/A Shore A | |

Material Build



Features

| | | | |
|-----------------------|-----|-----------------|----|
| FDA | YES | Anti-Static | NO |
| USDA Meat and Poultry | NO | Flame Retardant | NO |
| USDA Dairy | NO | Cross Rigid | NO |
| Anti-Microbial | NO | | |

Standard Fabrications

| | | | |
|------------------------|-----|-------------------------|-----|
| Longitudinal Splice | YES | Cleats | NO |
| Guide Applied to Cover | YES | Guide Applied to Bottom | YES |
| Footed Sidewall | NO | Footless Sidewall | NO |
| Edge Capped | NO | Plastic Spiral Lace | YES |

Notes

2 Ply cotton polyester - bare x bare. Great for dough release in bakery applications.

Splicing Instructions

High Speed Press Settings

| Pressure (psi) | Temperature | | Press Time | Foil Position | Foil | Release Top/Bot. |
|----------------|----------------|----------------|------------|---------------|-----------|-------------------------------|
| | Top | Bottom | | | | |
| 30 | 170°C 338°F | 170°C 338°F | 180 s | Bottom | White PVC | Rough Teflon/ Rough Teflon |

Water Cooled Press Settings

| Pressure (psi) | Temperature | | Press Time | Foil Position | Foil | Release Top/Bot. |
|----------------|----------------|----------------|------------|---------------|-----------|-------------------------------|
| | Top | Bottom | | | | |
| 30 | 170°C 338°F | 170°C 338°F | 120 s | Bottom | White PVC | Rough Teflon/ Rough Teflon |

*These settings are a guideline only, every press is different. Test splicing is recommended.

Standard Splices

| | |
|--------------|--------------------|
| Endless | Finger Over Finger |
| Clipper Lace | UCM36 SP |
| Staple Lace | RS62 |

*Minimum pulley diameters can vary when mechanical lace is installed. Contact our technical team for any fabrication or application questions.



210160

2PN60/FA/0 White

PVC

Material Construction

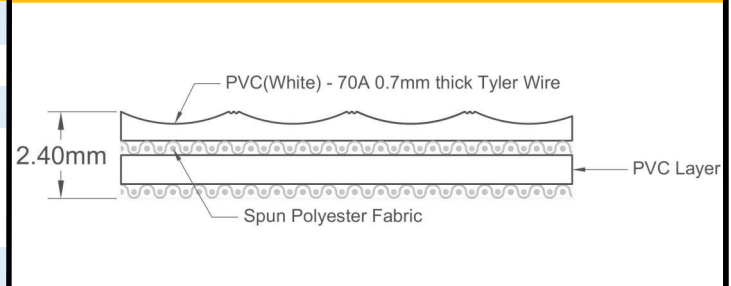
| | | | |
|----------------|-------------------------|-------------------------|-------------------------|
| Surface | Conveying | Material | PVC |
| | | Profile | Tyler Wire (Pebble Top) |
| | | Color | White |
| | | Coefficient of friction | N/A |
| Tension Member | Material | Spun Polyester Fabric | |
| | Plies | 2 | |
| Underside | Material | Spun Polyester Fabric | |
| | Profile | Bare | |
| | Color | White | |
| | Coefficient of friction | 0.20 | |



Technical Specifications

| | | |
|---|-----------------------|---------------------------|
| Overall Thickness | 2.40 mm | 0.094 in. |
| Weight | 2.6 kg/m ² | 0.53 lbs./ft ² |
| Maximum Width | 2,000 mm | 78.75 in. |
| Minimum Pulley/Nose Bar | | |
| Diameter for Recommended Endless Splice | 25 mm | 0.984 in. |
| Minimum Back Flex | 40 mm | 1.575 in. |
| Load for 1% Extension (Dynamic) | 5 N/mm | 28.55 lbs./in. |
| Standard Tension | | 0.5 % |
| Product Operational Temperature Range | -10/60 °C | 14/140 °F |
| Cover Durometer | 70 Shore A | |

Material Build



Features

| | | | |
|-----------------------|-----|-----------------|-----|
| FDA | YES | Anti-Static | YES |
| USDA Meat and Poultry | NO | Flame Retardant | NO |
| USDA Dairy | NO | Cross Rigid | NO |
| Anti-Microbial | NO | | |

Standard Fabrications

| | | | |
|------------------------|-----|-------------------------|-----|
| Longitudinal Splice | YES | Cleats | YES |
| Guide Applied to Cover | YES | Guide Applied to Bottom | YES |
| Footed Sidewall | NO | Footless Sidewall | NO |
| Edge Capped | YES | Plastic Spiral Lace | YES |

Notes

2 ply multifilament - cover one side Tyler wire profile

*Minimum pulley diameters can vary when mechanical lace is installed. Contact our technical team for any fabrication or application questions.

Splicing Instructions

High Speed Press Settings

| Pressure (psi) | Temperature | | Press Time | Foil Position | Foil | Release Top/Bot. |
|----------------|----------------|----------------|------------|---------------|-----------|-----------------------------|
| | Top | Bottom | | | | |
| 30 | 175°C 347°F | 175°C 347°F | 240 s | Top | White PVC | Impression Pad/Rough Teflon |

Water Cooled Press Settings

| Pressure (psi) | Temperature | | Press Time | Foil Position | Foil | Release Top/Bot. |
|----------------|----------------|----------------|------------|---------------|-----------|-----------------------------|
| | Top | Bottom | | | | |
| 30 | 175°C 347°F | 175°C 347°F | 150 s | Top | White PVC | Impression Pad/Rough Teflon |

*These settings are a guideline only, every press is different. Test splicing is recommended.

Standard Splices

| | |
|--------------|---------------|
| Endless | Single Finger |
| Clipper Lace | UCM36 SP |
| Staple Lace | RS62 |





UNIVERSAL BELTING RESOURCE

Industrial Lightweight Belting

Product Data Sheet

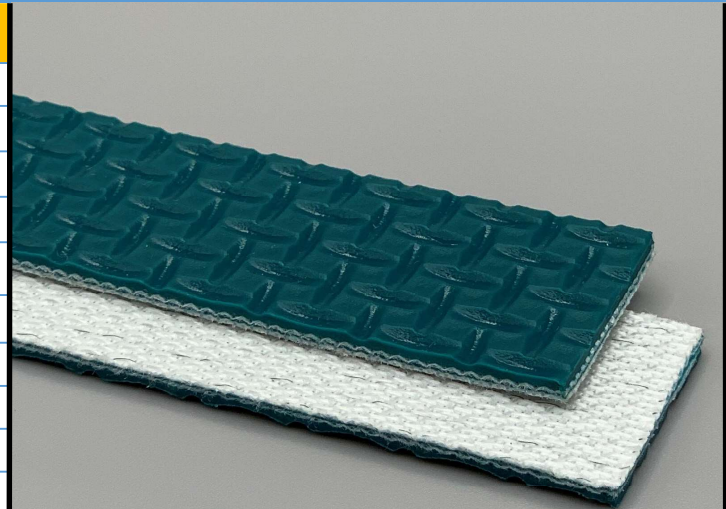
263166

2PL70/LT/0 AS Blue/Green

PVC

Material Construction

| | | |
|-------------------|-------------------------|-------------------------|
| Conveying Surface | Material | PVC |
| | Profile | Lattice |
| | Color | Green |
| | Coefficient of friction | N/A |
| Tension Member | Material | Polyester Fabric |
| | Plies | 2 |
| Underside | Material | Whisper weave polyester |
| | Profile | Low Noise |
| | Color | White |
| | Coefficient of friction | 0.25 |



Technical Specifications

| | | |
|---|-----------------------|---------------------------|
| Overall Thickness | 2.60 mm | 0.102 in. |
| Weight | 2.6 kg/m ² | 0.53 lbs./ft ² |
| Maximum Width | 3,000 mm | 118.125 in. |
| Minimum Pulley/Nose Bar | | |
| Diameter for Recommended Endless Splice | 40 mm | 1.575 in. |
| Minimum Back Flex | 50 mm | 1.969 in. |
| Load for 1% Extension (Dynamic) | 8 N/mm | 45.68 lbs./in. |
| Standard Tension | | 0.5 % |
| Product Operational Temperature Range | -10/80 °C | 14/176 °F |
| Cover Durometer | 35 Shore A | |

Material Build



Features

| | | | |
|-----------------------|----|-----------------|-----|
| FDA | NO | Anti-Static | YES |
| USDA Meat and Poultry | NO | Flame Retardant | NO |
| USDA Dairy | NO | Cross Rigid | YES |
| Anti-Microbial | NO | | |

Standard Fabrications

| | | | |
|------------------------|-----|-------------------------|-----|
| Longitudinal Splice | YES | Cleats | YES |
| Guide Applied to Cover | YES | Guide Applied to Bottom | YES |
| Footed Sidewall | NO | Footless Sidewall | NO |
| Edge Capped | YES | Plastic Spiral Lace | YES |

Notes

2 Ply Low noise monofilament, cover one side lattice top

*Minimum pulley diameters can vary when mechanical lace is installed. Contact our technical team for any fabrication or application questions.

Splicing Instructions

High Speed Press Settings

| Pressure (psi) | Temperature | | Press Time | Foil Position | Foil | Release Top/Bot. |
|----------------|----------------|----------------|------------|---------------|-----------|-----------------------------|
| | Top | Bottom | | | | |
| 30 | 175°C 347°F | 175°C 347°F | 240 s | Top | Green PVC | Impression Pad/Rough Teflon |

Water Cooled Press Settings

| Pressure (psi) | Temperature | | Press Time | Foil Position | Foil | Release Top/Bot. |
|----------------|----------------|----------------|------------|---------------|-----------|-----------------------------|
| | Top | Bottom | | | | |
| 30 | 175°C 347°F | 175°C 347°F | 150 s | Top | Green PVC | Impression Pad/Rough Teflon |

*These settings are a guideline only, every press is different. Test splicing is recommended.

Standard Splices

| | |
|--------------|---------------|
| Endless | Single Finger |
| Clipper Lace | UCM36 |
| Staple Lace | RS62 |



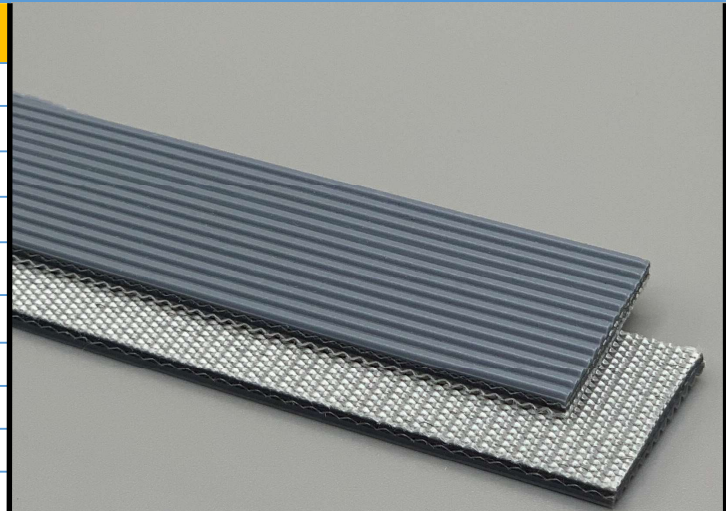
265200

2P110/LR/0 Gray

PVC

Material Construction

| | | | |
|----------------|-----------|-------------------------|---------------------|
| Surface | Conveying | Material | PVC |
| | | Profile | Longitudinal ribbed |
| | | Color | Gray |
| | | Coefficient of friction | N/A |
| Tension Member | | Material | Polyester Fabric |
| | | Plies | 2 |
| Underside | | Material | Polyester fabric |
| | | Profile | Impregnated |
| | | Color | Gray |
| | | Coefficient of friction | 0.25 |



Technical Specifications

| | | |
|---|-----------------------|---------------------------|
| Overall Thickness | 2.50 mm | 0.098 in. |
| Weight | 2.5 kg/m ² | 0.51 lbs./ft ² |
| Maximum Width | 3,000 mm | 118.125 in. |
| Minimum Pulley/Nose Bar | | |
| Diameter for Recommended Endless Splice | 50 mm | 1.969 in. |
| Minimum Back Flex | 60 mm | 2.362 in. |
| Load for 1% Extension (Dynamic) | 8 N/mm | 45.68 lbs./in. |
| Standard Tension | | 0.5 % |
| Product Operational Temperature Range | -10/80 °C | 14/176 °F |
| Cover Durometer | 45 Shore A | |

Features

| | | | |
|-----------------------|----|-----------------|-----|
| FDA | NO | Anti-Static | YES |
| USDA Meat and Poultry | NO | Flame Retardant | NO |
| USDA Dairy | NO | Cross Rigid | YES |
| Anti-Microbial | NO | | |

Standard Fabrications

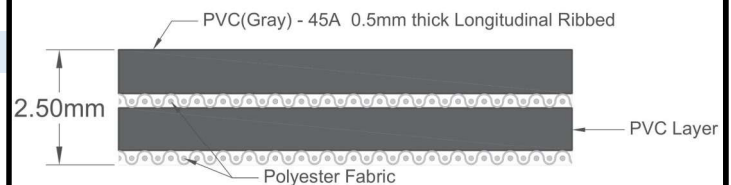
| | | | |
|------------------------|-----|-------------------------|-----|
| Longitudinal Splice | YES | Cleats | YES |
| Guide Applied to Cover | YES | Guide Applied to Bottom | YES |
| Footed Sidewall | NO | Footless Sidewall | NO |
| Edge Capped | YES | Plastic Spiral Lace | YES |

Notes

2 ply monofilament - cover one side longitudinal groove

*Minimum pulley diameters can vary when mechanical lace is installed. Contact our technical team for any fabrication or application questions.

Material Build



Splicing Instructions

High Speed Press Settings

| Pressure (psi) | Temperature | | Press Time | Foil Position | Foil | Release Top/Bot. |
|----------------|----------------|----------------|------------|---------------|----------|-----------------------------|
| | Top | Bottom | | | | |
| 30 | 175°C 347°F | 175°C 347°F | 240 s | Top | Grey PVC | Impression Pad/Rough Teflon |

Water Cooled Press Settings

| Pressure (psi) | Temperature | | Press Time | Foil Position | Foil | Release Top/Bot. |
|----------------|----------------|----------------|------------|---------------|----------|-----------------------------|
| | Top | Bottom | | | | |
| 30 | 175°C 347°F | 175°C 347°F | 150 s | Top | Grey PVC | Impression Pad/Rough Teflon |

*These settings are a guideline only, every press is different. Test splicing is recommended.

Standard Splices

| | |
|--------------|---------------|
| Endless | Single Finger |
| Clipper Lace | UCM36 |
| Staple Lace | RS62 |



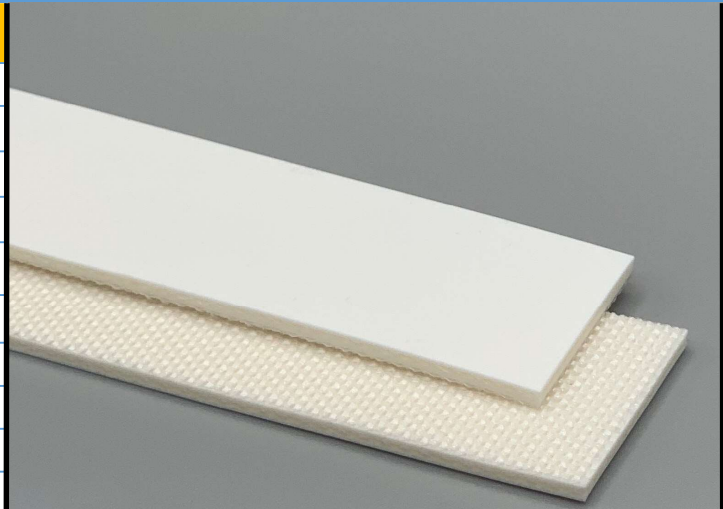
265205

2P100/05/0 G White

PVC

Material Construction

| | | | |
|----------------|-----------|-------------------------|------------------|
| Surface | Conveying | Material | PVC |
| | | Profile | Glossy |
| | | Color | White |
| | | Coefficient of friction | N/A |
| Tension Member | | Material | Polyester Fabric |
| | | Plies | 2 |
| Underside | | Material | Polyester fabric |
| | | Profile | Impregnated |
| | | Color | White |
| | | Coefficient of friction | 0.25 |



Technical Specifications

| | | |
|---|------------------------|---------------------------|
| Overall Thickness | 2.00 mm | 0.079 in. |
| Weight | 2.35 kg/m ² | 0.48 lbs./ft ² |
| Maximum Width | 2,000 mm | 78.75 in. |
| Minimum Pulley/Nose Bar | | |
| Diameter for Recommended Endless Splice | 25 mm | 0.984 in. |
| Minimum Back Flex | 40 mm | 1.575 in. |
| Load for 1% Extension (Dynamic) | 6 N/mm | 34.26 lbs./in. |
| Standard Tension | | 0.5 % |
| Product Operational Temperature Range | -10/70 °C | 14/158 °F |
| Cover Durometer | 65 Shore A | |

Material Build



Features

| | | | |
|-----------------------|-----|-----------------|-----|
| FDA | YES | Anti-Static | NO |
| USDA Meat and Poultry | NO | Flame Retardant | NO |
| USDA Dairy | NO | Cross Rigid | YES |
| Anti-Microbial | NO | | |

Standard Fabrications

| | | | |
|------------------------|-----|-------------------------|-----|
| Longitudinal Splice | YES | Cleats | YES |
| Guide Applied to Cover | YES | Guide Applied to Bottom | YES |
| Footed Sidewall | YES | Footless Sidewall | NO |
| Edge Capped | YES | Plastic Spiral Lace | YES |

Notes

2 Ply Monofilament - cover one side

Splicing Instructions

High Speed Press Settings

| Pressure (psi) | Temperature | | Press Time | Foil Position | Foil | Release Top/Bot. |
|----------------|----------------|----------------|------------|---------------|-----------|-------------------------------|
| | Top | Bottom | | | | |
| 30 | 175°C 347°F | 175°C 347°F | 180 s | Top | White PVC | Rough Teflon/ Rough Teflon |

Water Cooled Press Settings

| Pressure (psi) | Temperature | | Press Time | Foil Position | Foil | Release Top/Bot. |
|----------------|----------------|----------------|------------|---------------|-----------|-------------------------------|
| | Top | Bottom | | | | |
| 30 | 175°C 347°F | 175°C 347°F | 120 s | Top | White PVC | Rough Teflon/ Rough Teflon |

*These settings are a guideline only, every press is different. Test splicing is recommended.

Standard Splices

| | |
|--------------|---------------|
| Endless | Single Finger |
| Clipper Lace | UCM36 SP |
| Staple Lace | RS62 |

*Minimum pulley diameters can vary when mechanical lace is installed. Contact our technical team for any fabrication or application questions.



265206

2P100/NPY/0 White

PVC

Material Construction

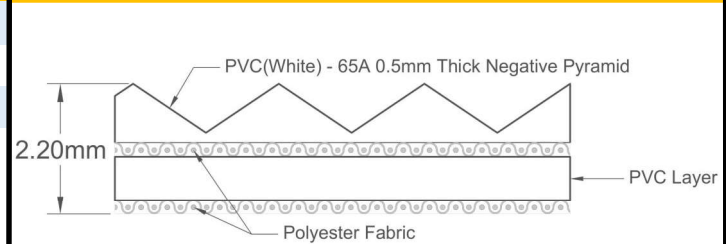
| | | | |
|----------------|-------------------------|-------------------------|------------------|
| Surface | Conveying | Material | PVC |
| | | Profile | Negative Pyramid |
| | | Color | White |
| | | Coefficient of friction | N/A |
| Tension Member | Material | Polyester Fabric | |
| | Plies | 2 | |
| Underside | Material | Polyester fabric | |
| | Profile | Impregnated | |
| | Color | White | |
| | Coefficient of friction | 0.25 | |



Technical Specifications

| | | |
|---|-----------------------|---------------------------|
| Overall Thickness | 2.20 mm | 0.087 in. |
| Weight | 2.4 kg/m ² | 0.49 lbs./ft ² |
| Maximum Width | 3,200 mm | 126 in. |
| Minimum Pulley/Nose Bar | | |
| Diameter for Recommended Endless Splice | 40 mm | 1.575 in. |
| Minimum Back Flex | 60 mm | 2.362 in. |
| Load for 1% Extension (Dynamic) | 6 N/mm | 34.26 lbs./in. |
| Standard Tension | | 0.5 % |
| Product Operational Temperature Range | -10/70 °C | 14/158 °F |
| Cover Durometer | 65 Shore A | |

Material Build



Features

| | | | |
|-----------------------|-----|-----------------|-----|
| FDA | YES | Anti-Static | NO |
| USDA Meat and Poultry | NO | Flame Retardant | NO |
| USDA Dairy | NO | Cross Rigid | YES |
| Anti-Microbial | NO | | |

Standard Fabrications

| | | | |
|------------------------|-----|-------------------------|-----|
| Longitudinal Splice | YES | Cleats | YES |
| Guide Applied to Cover | YES | Guide Applied to Bottom | YES |
| Footed Sidewall | NO | Footless Sidewall | NO |
| Edge Capped | YES | Plastic Spiral Lace | YES |

Notes

2 Ply Monofilament - cover one side - Negative pyramid

*Minimum pulley diameters can vary when mechanical lace is installed. Contact our technical team for any fabrication or application questions.

Splicing Instructions

High Speed Press Settings

| Pressure (psi) | Temperature | | Press Time | Foil Position | Foil | Release Top/Bot. |
|----------------|----------------|----------------|------------|---------------|-----------|-----------------------------|
| | Top | Bottom | | | | |
| 30 | 175°C 347°F | 175°C 347°F | 240 s | Top | White PVC | Impression Pad/Rough Teflon |

Water Cooled Press Settings

| Pressure (psi) | Temperature | | Press Time | Foil Position | Foil | Release Top/Bot. |
|----------------|----------------|----------------|------------|---------------|-----------|-----------------------------|
| | Top | Bottom | | | | |
| 30 | 175°C 347°F | 175°C 347°F | 150 s | Top | White PVC | Impression Pad/Rough Teflon |

*These settings are a guideline only, every press is different. Test splicing is recommended.

Standard Splices

| | |
|--------------|---------------|
| Endless | Single Finger |
| Clipper Lace | UCM36 |
| Staple Lace | RS62 |



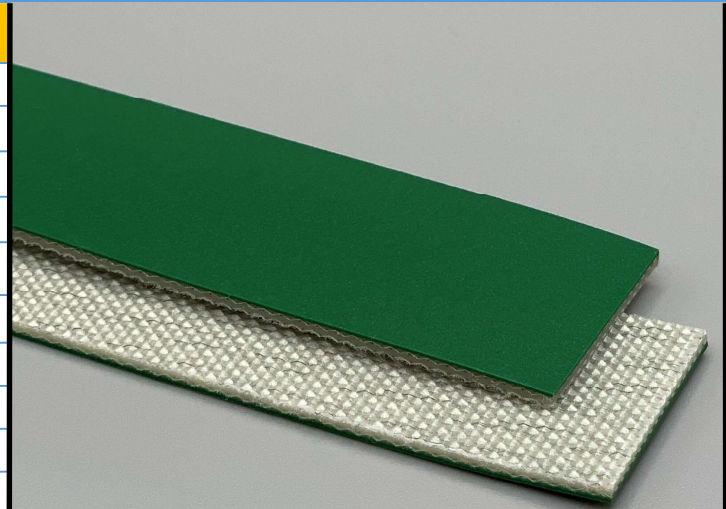
265207

2P100/05/0 Matt LT Green

PVC

Material Construction

| | | | |
|----------------|-----------|-------------------------|------------------|
| Surface | Conveying | Material | PVC |
| | | Profile | Matt |
| | | Color | green |
| | | Coefficient of friction | N/A |
| Tension Member | | Material | Polyester Fabric |
| | | Plies | 2 |
| Underside | | Material | Polyester fabric |
| | | Profile | Impregnated |
| | | Color | Gray |
| | | Coefficient of friction | 0.25 |



Technical Specifications

| | | |
|---|-----------------------|---------------------------|
| Overall Thickness | 2.00 mm | 0.079 in. |
| Weight | 2.5 kg/m ² | 0.51 lbs./ft ² |
| Maximum Width | 3,000 mm | 118.125 in. |
| Minimum Pulley/Nose Bar | | |
| Diameter for Recommended Endless Splice | 30 mm | 1.181 in. |
| Minimum Back Flex | 40 mm | 1.575 in. |
| Load for 1% Extension (Dynamic) | 8 N/mm | 45.68 lbs./in. |
| Standard Tension | | 0.5 % |
| Product Operational Temperature Range | -10/80 °C | 14/176 °F |
| Cover Durometer | 85 Shore A | |

Material Build



Features

| | | | |
|-----------------------|----|-----------------|-----|
| FDA | NO | Anti-Static | YES |
| USDA Meat and Poultry | NO | Flame Retardant | NO |
| USDA Dairy | NO | Cross Rigid | YES |
| Anti-Microbial | NO | | |

Standard Fabrications

| | | | |
|------------------------|-----|-------------------------|-----|
| Longitudinal Splice | YES | Cleats | YES |
| Guide Applied to Cover | YES | Guide Applied to Bottom | YES |
| Footed Sidewall | YES | Footless Sidewall | NO |
| Edge Capped | YES | Plastic Spiral Lace | YES |

Notes

2 Ply Monofilament - cover one side

Splicing Instructions

High Speed Press Settings

| Pressure (psi) | Temperature | | Press Time | Foil Position | Foil | Release Top/Bot. |
|----------------|----------------|----------------|------------|---------------|-----------------|--------------------|
| | Top | Bottom | | | | |
| 30 | 175°C 347°F | 175°C 347°F | 240 s | Top | Light Green PVC | Matte/Rough Teflon |

Water Cooled Press Settings

| Pressure (psi) | Temperature | | Press Time | Foil Position | Foil | Release Top/Bot. |
|----------------|----------------|----------------|------------|---------------|-----------------|--------------------|
| | Top | Bottom | | | | |
| 30 | 175°C 347°F | 175°C 347°F | 120 s | Top | Light Green PVC | Matte/Rough Teflon |

*These settings are a guideline only, every press is different. Test splicing is recommended.

Standard Splices

| | |
|--------------|---------------|
| Endless | Single Finger |
| Clipper Lace | UCM36 SP |
| Staple Lace | RS62 |

*Minimum pulley diameters can vary when mechanical lace is installed. Contact our technical team for any fabrication or application questions.



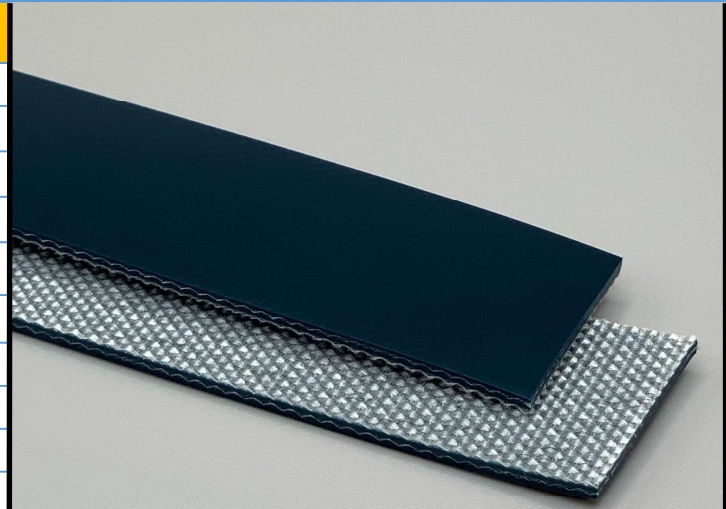
265209

2P100/05/0 G Green

PVC

Material Construction

| | | | |
|----------------|-----------|-------------------------|------------------|
| Surface | Conveying | Material | PVC |
| | | Profile | Glossy |
| | | Color | Dark Green |
| | | Coefficient of friction | N/A |
| Tension Member | | Material | Polyester Fabric |
| | | Plies | 2 |
| Underside | | Material | Polyester fabric |
| | | Profile | Impregnated |
| | | Color | Gray |
| | | Coefficient of friction | 0.25 |



Technical Specifications

| | | |
|---|-----------------------|---------------------------|
| Overall Thickness | 1.90 mm | 0.075 in. |
| Weight | 2.1 kg/m ² | 0.43 lbs./ft ² |
| Maximum Width | 3,200 mm | 126 in. |
| Minimum Pulley/Nose Bar | | |
| Diameter for Recommended Endless Splice | 40 mm | 1.575 in. |
| Minimum Back Flex | 50 mm | 1.969 in. |
| Load for 1% Extension (Dynamic) | 8 N/mm | 45.68 lbs./in. |
| Standard Tension | | 0.5 % |
| Product Operational Temperature Range | -10/70 °C | 14/158 °F |
| Cover Durometer | 85 Shore A | |

Features

| | | | |
|-----------------------|----|-----------------|-----|
| FDA | NO | Anti-Static | YES |
| USDA Meat and Poultry | NO | Flame Retardant | NO |
| USDA Dairy | NO | Cross Rigid | YES |
| Anti-Microbial | NO | | |

Standard Fabrications

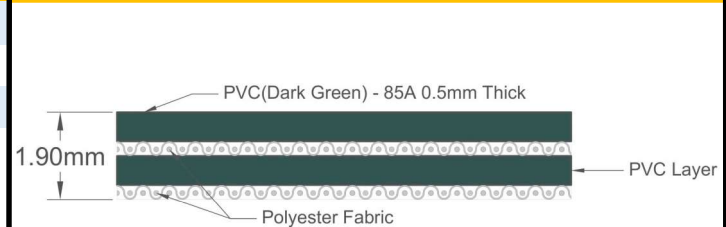
| | | | |
|------------------------|-----|-------------------------|-----|
| Longitudinal Splice | YES | Cleats | YES |
| Guide Applied to Cover | YES | Guide Applied to Bottom | YES |
| Footed Sidewall | YES | Footless Sidewall | NO |
| Edge Capped | YES | Plastic Spiral Lace | YES |

Notes

2 Ply Monofilament - cover one side

*Minimum pulley diameters can vary when mechanical lace is installed. Contact our technical team for any fabrication or application questions.

Material Build



Splicing Instructions

High Speed Press Settings

| Pressure (psi) | Temperature | | Press Time | Foil Position | Foil | Release Top/Bot. |
|----------------|----------------|----------------|------------|---------------|-----------|--------------------|
| | Top | Bottom | | | | |
| 30 | 175°C 347°F | 175°C 347°F | 240 s | Top | Green PVC | Gloss/Rough Teflon |

Water Cooled Press Settings

| Pressure (psi) | Temperature | | Press Time | Foil Position | Foil | Release Top/Bot. |
|----------------|----------------|----------------|------------|---------------|-----------|--------------------|
| | Top | Bottom | | | | |
| 30 | 175°C 347°F | 175°C 347°F | 120 s | Top | Green PVC | Gloss/Rough Teflon |

*These settings are a guideline only, every press is different. Test splicing is recommended.

Standard Splices

| | |
|--------------|---------------|
| Endless | Single Finger |
| Clipper Lace | UCM36 SP |
| Staple Lace | RS62 |



265211

2P100/05/0 M Black

PVC

Material Construction

| | | | |
|----------------|-----------|-------------------------|------------------|
| Surface | Conveying | Material | PVC |
| | | Profile | Matt |
| | | Color | Black |
| | | Coefficient of friction | N/A |
| Tension Member | | Material | Polyester Fabric |
| | | Plies | 2 |
| Underside | | Material | Polyester fabric |
| | | Profile | Impregnated |
| | | Color | Gray |
| | | Coefficient of friction | 0.25 |



Technical Specifications

| | | |
|---|-----------------------|---------------------------|
| Overall Thickness | 1.90 mm | 0.075 in. |
| Weight | 2.1 kg/m ² | 0.43 lbs./ft ² |
| Maximum Width | 3,200 mm | 126 in. |
| Minimum Pulley/Nose Bar | | |
| Diameter for Recommended Endless Splice | 40 mm | 1.575 in. |
| Minimum Back Flex | 50 mm | 1.969 in. |
| Load for 1% Extension (Dynamic) | 6 N/mm | 34.26 lbs./in. |
| Standard Tension | | 0.5 % |
| Product Operational Temperature Range | -10/70 °C | 14/158 °F |
| Cover Durometer | 85 Shore A | |

Features

| | | | |
|-----------------------|----|-----------------|-----|
| FDA | NO | Anti-Static | YES |
| USDA Meat and Poultry | NO | Flame Retardant | NO |
| USDA Dairy | NO | Cross Rigid | YES |
| Anti-Microbial | NO | | |

Standard Fabrications

| | | | |
|------------------------|-----|-------------------------|-----|
| Longitudinal Splice | YES | Cleats | YES |
| Guide Applied to Cover | YES | Guide Applied to Bottom | YES |
| Footed Sidewall | YES | Footless Sidewall | NO |
| Edge Capped | YES | Plastic Spiral Lace | YES |

Notes

2 Ply Monofilament - cover one side

*Minimum pulley diameters can vary when mechanical lace is installed. Contact our technical team for any fabrication or application questions.

Material Build



Splicing Instructions

High Speed Press Settings

| Pressure (psi) | Temperature | | Press Time | Foil Position | Foil | Release Top/Bot. |
|----------------|----------------|----------------|------------|---------------|-----------|------------------------|
| | Top | Bottom | | | | |
| 30 | 175°C 347°F | 175°C 347°F | 240 s | Top | Black PVC | Matte/ Rough Teflon |

Water Cooled Press Settings

| Pressure (psi) | Temperature | | Press Time | Foil Position | Foil | Release Top/Bot. |
|----------------|----------------|----------------|------------|---------------|-----------|------------------------|
| | Top | Bottom | | | | |
| 30 | 175°C 347°F | 175°C 347°F | 120 s | Top | Black PVC | Matte/ Rough Teflon |

*These settings are a guideline only, every press is different. Test splicing is recommended.

Standard Splices

| | |
|--------------|---------------|
| Endless | Single Finger |
| Clipper Lace | UCM36 SP |
| Staple Lace | RS62 |



265212

2PL100/05/0 AS FR M Black

PVC

Material Construction

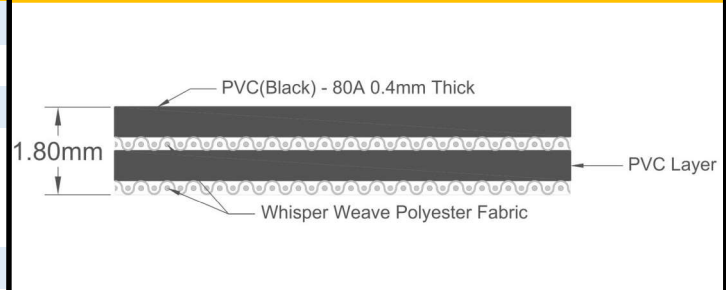
| | | |
|-------------------|-------------------------|-------------------------|
| Conveying Surface | Material | PVC |
| | Profile | Matt |
| | Color | Black |
| | Coefficient of friction | N/A |
| Tension Member | Material | Polyester Fabric |
| | Plies | 2 |
| Underside | Material | Whisper weave polyester |
| | Profile | Impregnated / Low Noise |
| | Color | Gray |
| | Coefficient of friction | 0.20 |



Technical Specifications

| | | |
|---|-----------------------|---------------------------|
| Overall Thickness | 1.80 mm | 0.071 in. |
| Weight | 2.1 kg/m ² | 0.43 lbs./ft ² |
| Maximum Width | 2,000 mm | 78.75 in. |
| Minimum Pulley/Nose Bar | | |
| Diameter for Recommended Endless Splice | 40 mm | 1.575 in. |
| Minimum Back Flex | 60 mm | 2.362 in. |
| Load for 1% Extension (Dynamic) | 12 N/mm | 68.52 lbs./in. |
| Standard Tension | | 0.5 % |
| Product Operational Temperature Range | -7/77 °C | 19/171 °F |
| Cover Durometer | 80 Shore A | |

Material Build



Features

| | | | |
|-----------------------|----|-----------------|-----|
| FDA | NO | Anti-Static | YES |
| USDA Meat and Poultry | NO | Flame Retardant | YES |
| USDA Dairy | NO | Cross Rigid | YES |
| Anti-Microbial | NO | | |

Standard Fabrications

| | | | |
|------------------------|-----|-------------------------|-----|
| Longitudinal Splice | YES | Cleats | YES |
| Guide Applied to Cover | YES | Guide Applied to Bottom | YES |
| Footed Sidewall | YES | Footless Sidewall | NO |
| Edge Capped | YES | Plastic Spiral Lace | YES |

Notes

Two Ply Flame Retardant with Low noise "Whisper weave" fabric bottom in an extremely flexible compact construction of 1.8 mm overall thickness making it highly suitable for many logistic applications with overall clearance concerns.

*Minimum pulley diameters can vary when mechanical lace is installed. Contact our technical team for any fabrication or application questions.

Splicing Instructions

High Speed Press Settings

| Pressure (psi) | Temperature | | Press Time | Foil Position | Foil | Release Top/Bot. |
|----------------|----------------|----------------|------------|---------------|-----------|------------------------|
| | Top | Bottom | | | | |
| 30 | 175°C 347°F | 175°C 347°F | 240 s | Top | Black PVC | Matte/ Rough Teflon |

Water Cooled Press Settings

| Pressure (psi) | Temperature | | Press Time | Foil Position | Foil | Release Top/Bot. |
|----------------|----------------|----------------|------------|---------------|-----------|------------------------|
| | Top | Bottom | | | | |
| 30 | 175°C 347°F | 175°C 347°F | 120 s | Top | Black PVC | Matte/ Rough Teflon |

*These settings are a guideline only, every press is different. Test splicing is recommended.

Standard Splices

| | |
|--------------|---------------|
| Endless | Single Finger |
| Clipper Lace | UCM36 SP |
| Staple Lace | RS62 |



265217

2P80/0/0 White

PVC

Material Construction

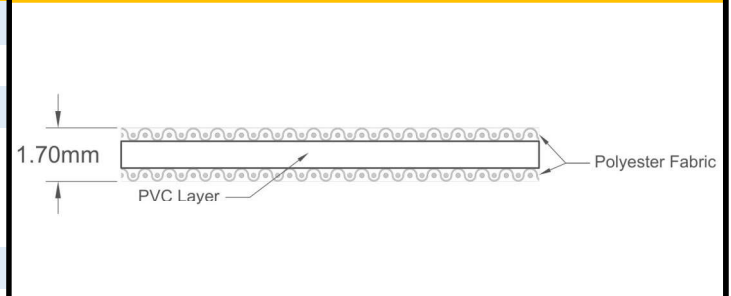
| | | | |
|----------------|-------------------------|-------------------------|------------------|
| Surface | Conveying | Material | Polyester Fabric |
| | | Profile | Impregnated |
| | | Color | White |
| | | Coefficient of friction | 0.25 |
| Tension Member | Material | Polyester Fabric | |
| | Plies | 2 | |
| Underside | Material | Polyester fabric | |
| | Profile | Impregnated | |
| | Color | White | |
| | Coefficient of friction | 0.25 | |



Technical Specifications

| | | |
|---|-----------------------|---------------------------|
| Overall Thickness | 1.70 mm | 0.067 in. |
| Weight | 1.7 kg/m ² | 0.35 lbs./ft ² |
| Maximum Width | 3,000 mm | 118.125 in. |
| Minimum Pulley/Nose Bar | | |
| Diameter for Recommended Endless Splice | 40 mm | 1.575 in. |
| Minimum Back Flex | 40 mm | 1.575 in. |
| Load for 1% Extension (Dynamic) | 8 N/mm | 45.68 lbs./in. |
| Standard Tension | | 0.5 % |
| Product Operational Temperature Range | -10/80 °C | 14/176 °F |
| Cover Durometer | N/A Shore A | |

Material Build



Features

| | | | |
|-----------------------|-----|-----------------|-----|
| FDA | YES | Anti-Static | YES |
| USDA Meat and Poultry | NO | Flame Retardant | NO |
| USDA Dairy | NO | Cross Rigid | YES |
| Anti-Microbial | NO | | |

Standard Fabrications

| | | | |
|------------------------|-----|-------------------------|-----|
| Longitudinal Splice | YES | Cleats | NO |
| Guide Applied to Cover | YES | Guide Applied to Bottom | YES |
| Footed Sidewall | NO | Footless Sidewall | NO |
| Edge Capped | NO | Plastic Spiral Lace | YES |

Notes

PVC 2 ply food grade monofilament impregnated top and bottom with newly upgraded antistatic features to help ensure trouble free operation and equipment protection

*Minimum pulley diameters can vary when mechanical lace is installed. Contact our technical team for any fabrication or application questions.

Splicing Instructions

High Speed Press Settings

| Pressure (psi) | Temperature | | Press Time | Foil Position | Foil | Release Top/Bot. |
|----------------|----------------|----------------|------------|---------------|-----------|-------------------------------|
| | Top | Bottom | | | | |
| 30 | 170°C 338°F | 170°C 338°F | 180 s | Bottom | White PVC | Rough Teflon/ Rough Teflon |

Water Cooled Press Settings

| Pressure (psi) | Temperature | | Press Time | Foil Position | Foil | Release Top/Bot. |
|----------------|----------------|----------------|------------|---------------|-----------|-------------------------------|
| | Top | Bottom | | | | |
| 30 | 170°C 338°F | 170°C 338°F | 120 s | Bottom | White PVC | Rough Teflon/ Rough Teflon |

*These settings are a guideline only, every press is different. Test splicing is recommended.

Standard Splices

| | |
|--------------|---------------|
| Endless | Single Finger |
| Clipper Lace | UCM36 SP |
| Staple Lace | RS62 |



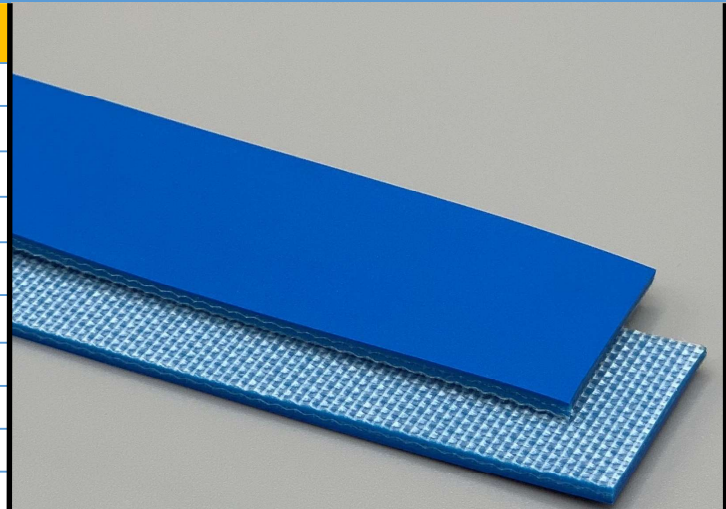
265220

2P80/04/0 S Blue

PVC

Material Construction

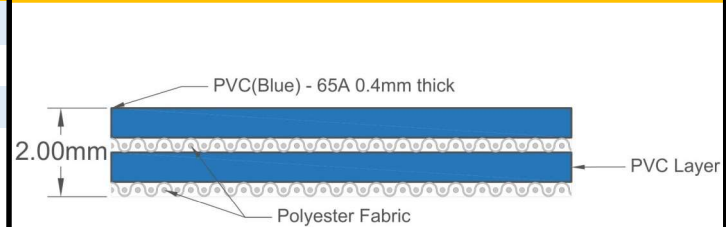
| | | | |
|----------------|-----------|-------------------------|------------------|
| Surface | Conveying | Material | PVC |
| | | Profile | Matt |
| | | Color | Blue |
| | | Coefficient of friction | N/A |
| Tension Member | | Material | Polyester Fabric |
| | | Plies | 2 |
| Underside | | Material | Polyester fabric |
| | | Profile | Impregnated |
| | | Color | White |
| | | Coefficient of friction | 0.25 |



Technical Specifications

| | | |
|---|-----------------------|---------------------------|
| Overall Thickness | 2.00 mm | 0.079 in. |
| Weight | 2.4 kg/m ² | 0.49 lbs./ft ² |
| Maximum Width | 2,000 mm | 78.75 in. |
| Minimum Pulley/Nose Bar | | |
| Diameter for Recommended Endless Splice | 30 mm | 1.181 in. |
| Minimum Back Flex | 40 mm | 1.575 in. |
| Load for 1% Extension (Dynamic) | 6 N/mm | 34.26 lbs./in. |
| Standard Tension | | 0.5 % |
| Product Operational Temperature Range | -10/70 °C | 14/158 °F |
| Cover Durometer | 65 Shore A | |

Material Build



Features

| | | | |
|-----------------------|-----|-----------------|-----|
| FDA | YES | Anti-Static | NO |
| USDA Meat and Poultry | NO | Flame Retardant | NO |
| USDA Dairy | NO | Cross Rigid | YES |
| Anti-Microbial | NO | | |

Standard Fabrications

| | | | |
|------------------------|-----|-------------------------|-----|
| Longitudinal Splice | YES | Cleats | YES |
| Guide Applied to Cover | YES | Guide Applied to Bottom | YES |
| Footed Sidewall | YES | Footless Sidewall | NO |
| Edge Capped | YES | Plastic Spiral Lace | YES |

Notes

2 Ply Monofilament - cover one side. Food grade 2 ply PVC with excellent top side friction qualities

*Minimum pulley diameters can vary when mechanical lace is installed. Contact our technical team for any fabrication or application questions.

Splicing Instructions

High Speed Press Settings

| Pressure (psi) | Temperature | | Press Time | Foil Position | Foil | Release Top/Bot. |
|----------------|----------------|----------------|------------|---------------|----------|------------------------|
| | Top | Bottom | | | | |
| 30 | 175°C 347°F | 175°C 347°F | 240 s | Top | Blue PVC | Matte/ Rough Teflon |

Water Cooled Press Settings

| Pressure (psi) | Temperature | | Press Time | Foil Position | Foil | Release Top/Bot. |
|----------------|----------------|----------------|------------|---------------|----------|------------------------|
| | Top | Bottom | | | | |
| 30 | 175°C 347°F | 175°C 347°F | 120 s | Top | Blue PVC | Matte/ Rough Teflon |

*These settings are a guideline only, every press is different. Test splicing is recommended.

Standard Splices

| | |
|--------------|---------------|
| Endless | Single Finger |
| Clipper Lace | UCM36 SP |
| Staple Lace | RS62 |



265225

2P80/04/04F S Blue

PVC

Material Construction

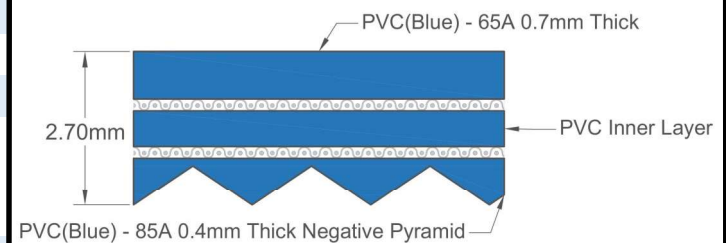
| | | | |
|----------------|-------------------------|-------------------------|--------|
| Surface | Conveying | Material | PVC |
| | | Profile | Glossy |
| | | Color | Blue |
| | | Coefficient of friction | N/A |
| Tension Member | Material | Polyester Fabric | |
| | Plies | 2 | |
| Underside | Material | PVC | |
| | Profile | Negative Pyramid | |
| | Color | Blue | |
| | Coefficient of friction | 0.50 | |



Technical Specifications

| | | |
|---|------------------------|---------------------------|
| Overall Thickness | 2.70 mm | 0.106 in. |
| Weight | 3.15 kg/m ² | 0.65 lbs./ft ² |
| Maximum Width | 2,000 mm | 78.75 in. |
| Minimum Pulley/Nose Bar | | |
| Diameter for Recommended Endless Splice | 50 mm | 1.969 in. |
| Minimum Back Flex | 60 mm | 2.362 in. |
| Load for 1% Extension (Dynamic) | 6 N/mm | 34.26 lbs./in. |
| Standard Tension | | 0.5 % |
| Product Operational Temperature Range | -10/70 °C | 14/158 °F |
| Cover Durometer | 65 Shore A | |

Material Build



Features

| | | | |
|-----------------------|-----|-----------------|-----|
| FDA | YES | Anti-Static | NO |
| USDA Meat and Poultry | NO | Flame Retardant | NO |
| USDA Dairy | NO | Cross Rigid | YES |
| Anti-Microbial | NO | | |

Standard Fabrications

| | | | |
|------------------------|-----|-------------------------|-----|
| Longitudinal Splice | YES | Cleats | YES |
| Guide Applied to Cover | YES | Guide Applied to Bottom | YES |
| Footed Sidewall | YES | Footless Sidewall | NO |
| Edge Capped | YES | Plastic Spiral Lace | YES |

Notes

2-ply monofilament - Cover Both sides

*Minimum pulley diameters can vary when mechanical lace is installed. Contact our technical team for any fabrication or application questions.

Splicing Instructions

High Speed Press Settings

| Pressure (psi) | Temperature | | Press Time | Foil Position | Foil | Release Top/Bot. |
|----------------|----------------|----------------|------------|---------------|----------|------------------------|
| | Top | Bottom | | | | |
| 30 | 175°C 347°F | 175°C 347°F | 210 s | Top | Blue PVC | Matte/ Rough Teflon |

Water Cooled Press Settings

| Pressure (psi) | Temperature | | Press Time | Foil Position | Foil | Release Top/Bot. |
|----------------|----------------|----------------|------------|---------------|----------|------------------------|
| | Top | Bottom | | | | |
| 30 | 175°C 347°F | 175°C 347°F | 150 s | Top | Blue PVC | Matte/ Rough Teflon |

*These settings are a guideline only, every press is different. Test splicing is recommended.

Standard Splices

| | |
|--------------|---------------|
| Endless | Single Finger |
| Clipper Lace | UCM36 |
| Staple Lace | RS62 |



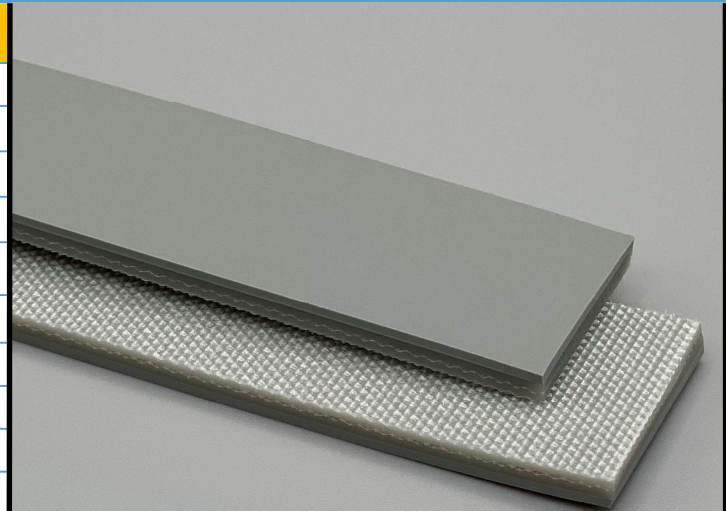
266223

2P70/20/0 AS G Gray

PVC

Material Construction

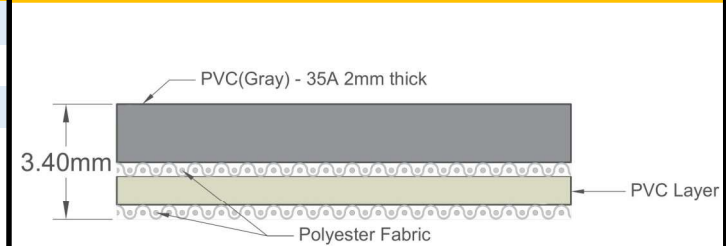
| | | | |
|----------------|-------------------------|-------------------------|--------|
| Surface | Conveying | Material | PVC |
| | | Profile | Glossy |
| | | Color | Gray |
| | | Coefficient of friction | N/A |
| Tension Member | Material | Polyester Fabric | |
| | Plies | 2 | |
| Underside | Material | Polyester fabric | |
| | Profile | Impregnated | |
| | Color | Gray | |
| | Coefficient of friction | 0.25 | |



Technical Specifications

| | | |
|---|-----------------------|---------------------------|
| Overall Thickness | 3.40 mm | 0.134 in. |
| Weight | 4.1 kg/m ² | 0.84 lbs./ft ² |
| Maximum Width | 2,000 mm | 78.75 in. |
| Minimum Pulley/Nose Bar | | |
| Diameter for Recommended Endless Splice | 60 mm | 2.362 in. |
| Minimum Back Flex | 80 mm | 3.15 in. |
| Load for 1% Extension (Dynamic) | 7 N/mm | 39.97 lbs./in. |
| Standard Tension | | 0.5 % |
| Product Operational Temperature Range | -10/70 °C | 14/158 °F |
| Cover Durometer | 35 Shore A | |

Material Build



Features

| | | | |
|-----------------------|----|-----------------|-----|
| FDA | NO | Anti-Static | YES |
| USDA Meat and Poultry | NO | Flame Retardant | NO |
| USDA Dairy | NO | Cross Rigid | YES |
| Anti-Microbial | NO | | |

Standard Fabrications

| | | | |
|------------------------|-----|-------------------------|-----|
| Longitudinal Splice | YES | Cleats | YES |
| Guide Applied to Cover | NO | Guide Applied to Bottom | YES |
| Footed Sidewall | NO | Footless Sidewall | NO |
| Edge Capped | NO | Plastic Spiral Lace | YES |

Notes

2 Ply Monofilament - cover one side

*Minimum pulley diameters can vary when mechanical lace is installed. Contact our technical team for any fabrication or application questions.

Splicing Instructions

High Speed Press Settings

| Pressure (psi) | Temperature | | Press Time | Foil Position | Foil | Release Top/Bot. |
|----------------|----------------|----------------|------------|---------------|----------|--------------------|
| | Top | Bottom | | | | |
| 30 | 170°C 338°F | 170°C 338°F | 240 s | Top | Grey PVC | Gloss/Rough Teflon |

Water Cooled Press Settings

| Pressure (psi) | Temperature | | Press Time | Foil Position | Foil | Release Top/Bot. |
|----------------|----------------|----------------|------------|---------------|----------|--------------------|
| | Top | Bottom | | | | |
| 30 | 160°C 320°F | 170°C 338°F | 120 s | Top | Grey PVC | Gloss/Rough Teflon |

*These settings are a guideline only, every press is different. Test splicing is recommended.

Standard Splices

| | |
|--------------|---------------|
| Endless | Single Finger |
| Clipper Lace | UX-1 |
| Staple Lace | RS125 |



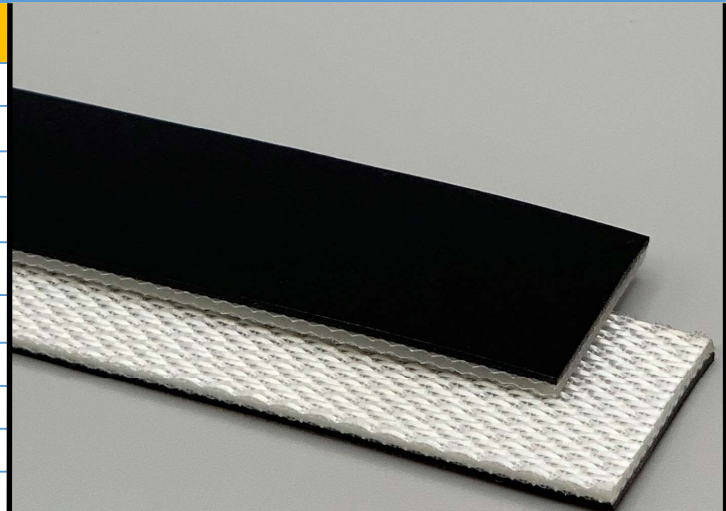
266226

2P70/05/0 AS G Black

PVC

Material Construction

| | | | |
|----------------|-----------|-------------------------|-------------------------|
| Surface | Conveying | Material | PVC |
| | | Profile | Glossy |
| | | Color | Black |
| | | Coefficient of friction | N/A |
| Tension Member | | Material | Polyester Fabric |
| | | Plies | 2 |
| Underside | | Material | Whisper weave polyester |
| | | Profile | Impregnated / Low Noise |
| | | Color | White |
| | | Coefficient of friction | 0.20 |



Technical Specifications

| | | |
|---|-----------------------|---------------------------|
| Overall Thickness | 2.10 mm | 0.083 in. |
| Weight | 2.5 kg/m ² | 0.51 lbs./ft ² |
| Maximum Width | 2,000 mm | 78.75 in. |
| Minimum Pulley/Nose Bar | | |
| Diameter for Recommended Endless Splice | 30 mm | 1.181 in. |
| Minimum Back Flex | 40 mm | 1.575 in. |
| Load for 1% Extension (Dynamic) | 7 N/mm | 39.97 lbs./in. |
| Standard Tension | | 0.5 % |
| Product Operational Temperature Range | -10/70 °C | 14/158 °F |
| Cover Durometer | 75 Shore A | |

Features

| | | | |
|-----------------------|----|-----------------|-----|
| FDA | NO | Anti-Static | YES |
| USDA Meat and Poultry | NO | Flame Retardant | NO |
| USDA Dairy | NO | Cross Rigid | YES |
| Anti-Microbial | NO | | |

Standard Fabrications

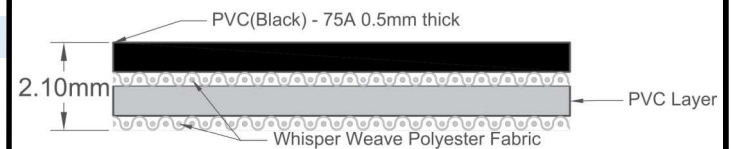
| | | | |
|------------------------|-----|-------------------------|-----|
| Longitudinal Splice | YES | Cleats | YES |
| Guide Applied to Cover | YES | Guide Applied to Bottom | YES |
| Footed Sidewall | YES | Footless Sidewall | NO |
| Edge Capped | YES | Plastic Spiral Lace | YES |

Notes

2 Ply Monofilament - cover one side

*Minimum pulley diameters can vary when mechanical lace is installed. Contact our technical team for any fabrication or application questions.

Material Build



Splicing Instructions

High Speed Press Settings

| Pressure (psi) | Temperature | | Press Time | Foil Position | Foil | Release Top/Bot. |
|----------------|----------------|----------------|------------|---------------|-----------|--------------------|
| | Top | Bottom | | | | |
| 30 | 175°C 347°F | 175°C 347°F | 240 s | Top | Black PVC | Gloss/Rough Teflon |

Water Cooled Press Settings

| Pressure (psi) | Temperature | | Press Time | Foil Position | Foil | Release Top/Bot. |
|----------------|----------------|----------------|------------|---------------|-----------|--------------------|
| | Top | Bottom | | | | |
| 30 | 175°C 347°F | 175°C 347°F | 120 s | Top | Black PVC | Gloss/Rough Teflon |

*These settings are a guideline only, every press is different. Test splicing is recommended.

Standard Splices

| | |
|--------------|---------------|
| Endless | Single Finger |
| Clipper Lace | UCM36 SP |
| Staple Lace | RS62 |



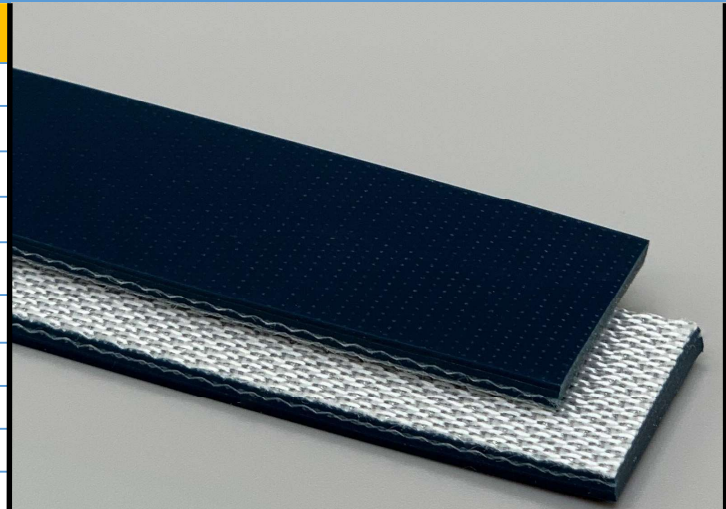
266235

2P120/20/0 AS G Green

PVC

Material Construction

| | | | |
|----------------|-----------|-------------------------|-------------------------|
| Surface | Conveying | Material | PVC |
| | | Profile | Glossy |
| | | Color | Dark Green |
| | | Coefficient of friction | N/A |
| Tension Member | | Material | Polyester Fabric |
| | | Plies | 2 |
| Underside | | Material | Whisper weave polyester |
| | | Profile | Impregnated / Low Noise |
| | | Color | Gray |
| | | Coefficient of friction | 0.19 |



Technical Specifications

| | | |
|---|-----------------------|---------------------------|
| Overall Thickness | 3.35 mm | 0.132 in. |
| Weight | 4.1 kg/m ² | 0.84 lbs./ft ² |
| Maximum Width | 2,000 mm | 78.75 in. |
| Minimum Pulley/Nose Bar | | |
| Diameter for Recommended Endless Splice | 40 mm | 1.575 in. |
| Minimum Back Flex | 60 mm | 2.362 in. |
| Load for 1% Extension (Dynamic) | 11 N/mm | 62.81 lbs./in. |
| Standard Tension | | 0.5 % |
| Product Operational Temperature Range | -10/70 °C | 14/158 °F |
| Cover Durometer | 75 Shore A | |

Features

| | | | |
|-----------------------|----|-----------------|-----|
| FDA | NO | Anti-Static | YES |
| USDA Meat and Poultry | NO | Flame Retardant | NO |
| USDA Dairy | NO | Cross Rigid | YES |
| Anti-Microbial | NO | | |

Standard Fabrications

| | | | |
|------------------------|-----|-------------------------|-----|
| Longitudinal Splice | YES | Cleats | YES |
| Guide Applied to Cover | YES | Guide Applied to Bottom | YES |
| Footed Sidewall | YES | Footless Sidewall | NO |
| Edge Capped | YES | Plastic Spiral Lace | YES |

Notes

2 Ply Monofilament - cover one side

*Minimum pulley diameters can vary when mechanical lace is installed. Contact our technical team for any fabrication or application questions.

Material Build



Splicing Instructions

High Speed Press Settings

| Pressure (psi) | Temperature | | Press Time | Foil Position | Foil | Release Top/Bot. |
|----------------|----------------|----------------|------------|---------------|-----------|--------------------|
| | Top | Bottom | | | | |
| 30 | 175°C 347°F | 175°C 347°F | 240 s | Top | Green PVC | Gloss/Rough Teflon |

Water Cooled Press Settings

| Pressure (psi) | Temperature | | Press Time | Foil Position | Foil | Release Top/Bot. |
|----------------|----------------|----------------|------------|---------------|-----------|--------------------|
| | Top | Bottom | | | | |
| 30 | 175°C 347°F | 175°C 347°F | 120 s | Top | Green PVC | Gloss/Rough Teflon |

*These settings are a guideline only, every press is different. Test splicing is recommended.

Standard Splices

| | |
|--------------|---------------|
| Endless | Single Finger |
| Clipper Lace | UX-1 |
| Staple Lace | RS125 |



266300

3P120/10/0 AS M White

PVC

Material Construction

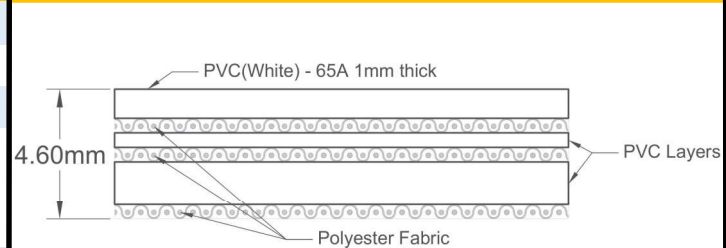
| | | | |
|----------------|-----------|-------------------------|------------------|
| Surface | Conveying | Material | PVC |
| | | Profile | Matt |
| | | Color | White |
| | | Coefficient of friction | N/A |
| Tension Member | | Material | Polyester Fabric |
| | | Plies | 3 |
| Underside | | Material | Polyester fabric |
| | | Profile | Impregnated |
| | | Color | White |
| | | Coefficient of friction | 0.25 |



Technical Specifications

| | | |
|---|-----------------------|---------------------------|
| Overall Thickness | 4.60 mm | 0.181 in. |
| Weight | 5.5 kg/m ² | 1.13 lbs./ft ² |
| Maximum Width | 2,000 mm | 78.75 in. |
| Minimum Pulley/Nose Bar | | |
| Diameter for Recommended Endless Splice | 100 mm | 3.937 in. |
| Minimum Back Flex | 250 mm | 9.843 in. |
| Load for 1% Extension (Dynamic) | 12 N/mm | 68.52 lbs./in. |
| Standard Tension | | 0.5 % |
| Product Operational Temperature Range | -10/70 °C | 14/158 °F |
| Cover Durometer | 65 Shore A | |

Material Build



Features

| | | | |
|-----------------------|-----|-----------------|-----|
| FDA | YES | Anti-Static | YES |
| USDA Meat and Poultry | NO | Flame Retardant | NO |
| USDA Dairy | NO | Cross Rigid | YES |
| Anti-Microbial | NO | | |

Standard Fabrications

| | | | |
|------------------------|-----|-------------------------|-----|
| Longitudinal Splice | YES | Cleats | YES |
| Guide Applied to Cover | YES | Guide Applied to Bottom | YES |
| Footed Sidewall | YES | Footless Sidewall | NO |
| Edge Capped | NO | Plastic Spiral Lace | YES |

Notes

3 Ply Monofilament - cover one side. Specially designed for depanner belts.

*Minimum pulley diameters can vary when mechanical lace is installed. Contact our technical team for any fabrication or application questions.

Splicing Instructions

High Speed Press Settings

| Pressure (psi) | Temperature | | Press Time | Foil Position | Foil | Release Top/Bot. |
|----------------|----------------|----------------|------------|---------------|------|------------------|
| | Top | Bottom | | | | |
| N/A | N/A°C N/A°F | N/A°C N/A°F | N/A s | N/A | N/A | N/A/N/A |

Water Cooled Press Settings

| Pressure (psi) | Temperature | | Press Time | Foil Position | Foil | Release Top/Bot. |
|----------------|----------------|----------------|------------|---------------|-----------|------------------------|
| | Top | Bottom | | | | |
| 30 | 175°C 347°F | 175°C 347°F | 180 s | Top | White PVC | Matte/ Rough Teflon |

*These settings are a guideline only, every press is different. Test splicing is recommended.

Standard Splices

| | |
|--------------|--|
| Endless | Finger Over Finger, Depanners 3 ply Bias Lap |
| Clipper Lace | U2 |
| Staple Lace | RS125 |



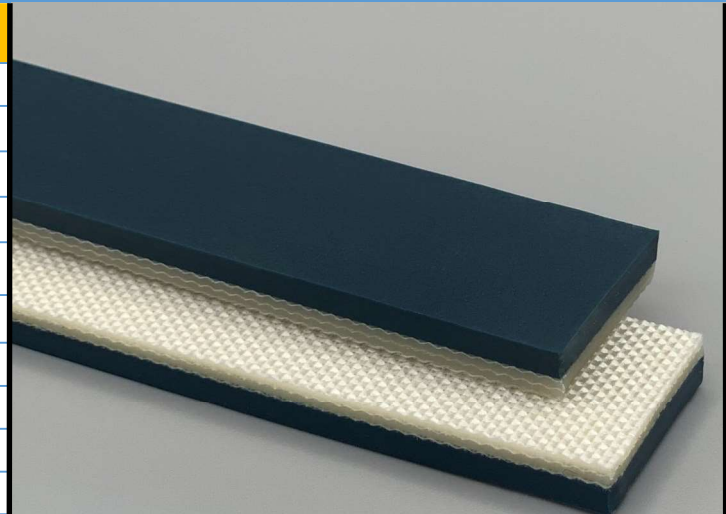
266301

3P180/30/0 AS M Green

PVC

Material Construction

| | | | |
|----------------|-----------|-------------------------|------------------|
| Surface | Conveying | Material | PVC |
| | | Profile | Matt |
| | | Color | Dark Green |
| | | Coefficient of friction | N/A |
| Tension Member | | Material | Polyester Fabric |
| | | Plies | 3 |
| Underside | | Material | Polyester fabric |
| | | Profile | Impregnated |
| | | Color | White |
| | | Coefficient of friction | 0.25 |



Technical Specifications

| | | |
|---|---------------------|---------------------------|
| Overall Thickness | 6.00 mm | 0.236 in. |
| Weight | 7 kg/m ² | 1.43 lbs./ft ² |
| Maximum Width | 2,000 mm | 78.75 in. |
| Minimum Pulley/Nose Bar | | |
| Diameter for Recommended Endless Splice | 150 mm | 5.906 in. |
| Minimum Back Flex | 200 mm | 7.874 in. |
| Load for 1% Extension (Dynamic) | 18 N/mm | 102.78 lbs./in. |
| Standard Tension | | 0.5 % |
| Product Operational Temperature Range | -10/70 °C | 14/158 °F |
| Cover Durometer | 35 Shore A | |

Features

| | | | |
|-----------------------|----|-----------------|-----|
| FDA | NO | Anti-Static | YES |
| USDA Meat and Poultry | NO | Flame Retardant | NO |
| USDA Dairy | NO | Cross Rigid | YES |
| Anti-Microbial | NO | | |

Standard Fabrications

| | | | |
|------------------------|-----|-------------------------|-----|
| Longitudinal Splice | YES | Cleats | NO |
| Guide Applied to Cover | NO | Guide Applied to Bottom | YES |
| Footed Sidewall | NO | Footless Sidewall | NO |
| Edge Capped | NO | Plastic Spiral Lace | YES |

Notes

3 Ply Monofilament - cover one side

*Minimum pulley diameters can vary when mechanical lace is installed. Contact our technical team for any fabrication or application questions.

Material Build



Splicing Instructions

High Speed Press Settings

| Pressure (psi) | Temperature | | Press Time | Foil Position | Foil | Release Top/Bot. |
|----------------|----------------|----------------|------------|---------------|------|------------------|
| | Top | Bottom | | | | |
| N/A | N/A°C N/A°F | N/A°C N/A°F | N/A s | N/A | N/A | N/A/N/A |

Water Cooled Press Settings

| Pressure (psi) | Temperature | | Press Time | Foil Position | Foil | Release Top/Bot. |
|----------------|----------------|----------------|------------|---------------|-----------|------------------------|
| | Top | Bottom | | | | |
| 30 | 175°C 347°F | 175°C 347°F | 180 s | Top | Green PVC | Matte/ Rough Teflon |

*These settings are a guideline only, every press is different. Test splicing is recommended.

Standard Splices

| | |
|--------------|--------------------|
| Endless | Finger Over Finger |
| Clipper Lace | U4 |
| Staple Lace | RS125 Recessed |



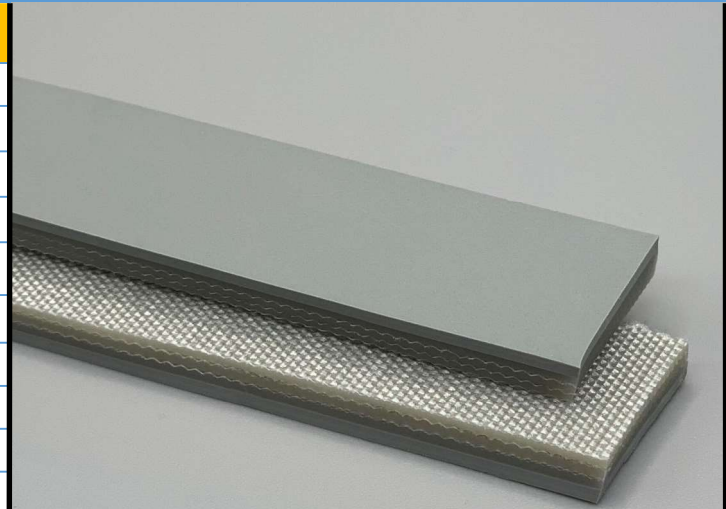
266310

3P150/20/0 AS M Gray

PVC

Material Construction

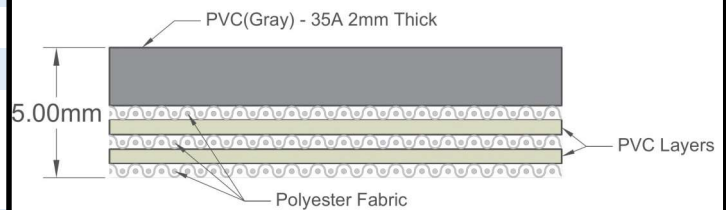
| | | |
|----------------|-------------------------|------------------|
| Surface | Conveying | |
| | Material | PVC |
| | Profile | Matt |
| | Color | Gray |
| | Coefficient of friction | N/A |
| Tension Member | Material | Polyester Fabric |
| | Plies | 3 |
| Underside | Material | Polyester fabric |
| | Profile | Impregnated |
| | Color | Gray |
| | Coefficient of friction | 0.25 |



Technical Specifications

| | | |
|---|---------------------|---------------------------|
| Overall Thickness | 5.00 mm | 0.197 in. |
| Weight | 6 kg/m ² | 1.23 lbs./ft ² |
| Maximum Width | 2,000 mm | 78.75 in. |
| Minimum Pulley/Nose Bar | | |
| Diameter for Recommended Endless Splice | 120 mm | 4.724 in. |
| Minimum Back Flex | 150 mm | 5.906 in. |
| Load for 1% Extension (Dynamic) | 15 N/mm | 85.65 lbs./in. |
| Standard Tension | | 0.5 % |
| Product Operational Temperature Range | -10/70 °C | 14/158 °F |
| Cover Durometer | 35 Shore A | |

Material Build



Features

| | | | |
|-----------------------|----|-----------------|-----|
| FDA | NO | Anti-Static | YES |
| USDA Meat and Poultry | NO | Flame Retardant | NO |
| USDA Dairy | NO | Cross Rigid | YES |
| Anti-Microbial | NO | | |

Standard Fabrications

| | | | |
|------------------------|-----|-------------------------|-----|
| Longitudinal Splice | YES | Cleats | YES |
| Guide Applied to Cover | NO | Guide Applied to Bottom | YES |
| Footed Sidewall | NO | Footless Sidewall | NO |
| Edge Capped | NO | Plastic Spiral Lace | YES |

Notes

3 Ply Monofilament - cover one side

*Minimum pulley diameters can vary when mechanical lace is installed. Contact our technical team for any fabrication or application questions.

Splicing Instructions

High Speed Press Settings

| Pressure (psi) | Temperature | | Press Time | Foil Position | Foil | Release Top/Bot. |
|----------------|----------------|----------------|------------|---------------|------|------------------|
| | Top | Bottom | | | | |
| N/A | N/A°C N/A°F | N/A°C N/A°F | N/A s | N/A | N/A | N/A/N/A |

Water Cooled Press Settings

| Pressure (psi) | Temperature | | Press Time | Foil Position | Foil | Release Top/Bot. |
|----------------|----------------|----------------|------------|---------------|----------|------------------------|
| | Top | Bottom | | | | |
| 30 | 175°C 347°F | 175°C 347°F | 180 s | Top | Gray PVC | Matte/ Rough Teflon |

*These settings are a guideline only, every press is different. Test splicing is recommended.

Standard Splices

| | |
|--------------|--------------------|
| Endless | Finger Over Finger |
| Clipper Lace | U3 |
| Staple Lace | RS125 Recessed |



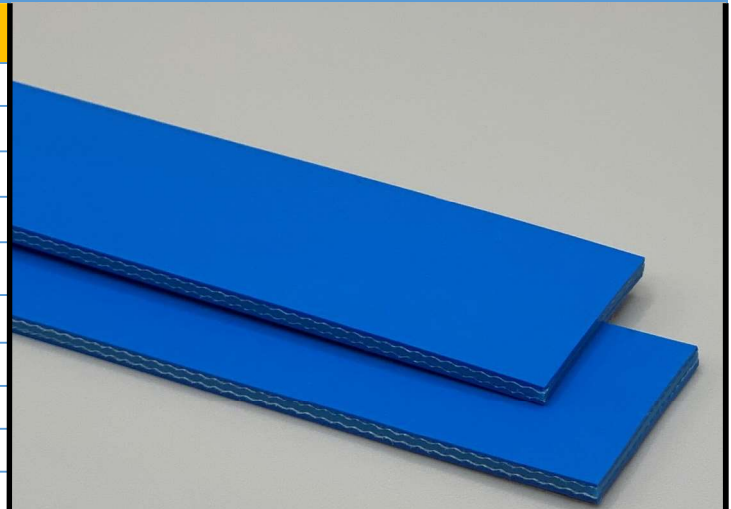
266530

2P80/04/04 Matt Blue

PVC

Material Construction

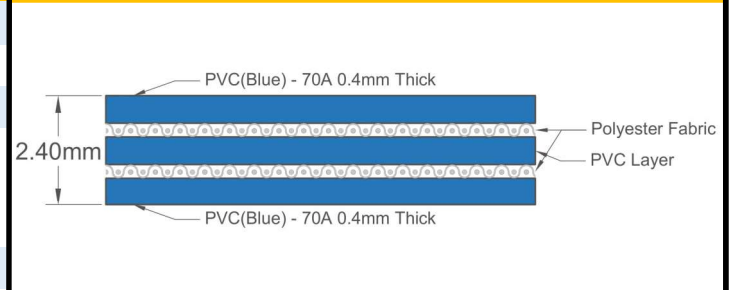
| | | |
|----------------|-------------------------|------------------|
| Surface | Conveying | |
| | Material | PVC |
| | Profile | Matt |
| | Color | Blue |
| | Coefficient of friction | N/A |
| Tension Member | Material | Polyester Fabric |
| | Plies | 2 |
| Underside | Material | PVC |
| | Profile | Matt |
| | Color | Blue |
| | Coefficient of friction | 0.70 |



Technical Specifications

| | | |
|---|-----------------------|---------------------------|
| Overall Thickness | 2.40 mm | 0.094 in. |
| Weight | 2.9 kg/m ² | 0.59 lbs./ft ² |
| Maximum Width | 2,000 mm | 78.75 in. |
| Minimum Pulley/Nose Bar | | |
| Diameter for Recommended Endless Splice | 50 mm | 1.969 in. |
| Minimum Back Flex | 75 mm | 2.953 in. |
| Load for 1% Extension (Dynamic) | 8 N/mm | 45.68 lbs./in. |
| Standard Tension | | 0.5 % |
| Product Operational Temperature Range | -10/70 °C | 14/158 °F |
| Cover Durometer | 70 Shore A | |

Material Build



Features

| | | | |
|-----------------------|-----|-----------------|-----|
| FDA | YES | Anti-Static | NO |
| USDA Meat and Poultry | NO | Flame Retardant | NO |
| USDA Dairy | NO | Cross Rigid | YES |
| Anti-Microbial | NO | | |

Standard Fabrications

| | | | |
|------------------------|-----|-------------------------|-----|
| Longitudinal Splice | YES | Cleats | YES |
| Guide Applied to Cover | YES | Guide Applied to Bottom | YES |
| Footed Sidewall | YES | Footless Sidewall | NO |
| Edge Capped | YES | Plastic Spiral Lace | YES |

Notes

2 Ply Monofilament - cover both sides

Splicing Instructions

High Speed Press Settings

| Pressure (psi) | Temperature | | Press Time | Foil Position | Foil | Release Top/Bot. |
|----------------|----------------|----------------|------------|---------------|----------|------------------|
| | Top | Bottom | | | | |
| 30 | 175°C 347°F | 175°C 347°F | 300 s | Top | Blue PVC | Matte/Matte |

Water Cooled Press Settings

| Pressure (psi) | Temperature | | Press Time | Foil Position | Foil | Release Top/Bot. |
|----------------|----------------|----------------|------------|---------------|----------|------------------|
| | Top | Bottom | | | | |
| 30 | 175°C 347°F | 175°C 347°F | 120 s | Top | Blue PVC | Matte/Matte |

*These settings are a guideline only, every press is different. Test splicing is recommended.

Standard Splices

| | |
|--------------|---------------|
| Endless | Single Finger |
| Clipper Lace | UCM36 |
| Staple Lace | RS62 |

*Minimum pulley diameters can vary when mechanical lace is installed. Contact our technical team for any fabrication or application questions.



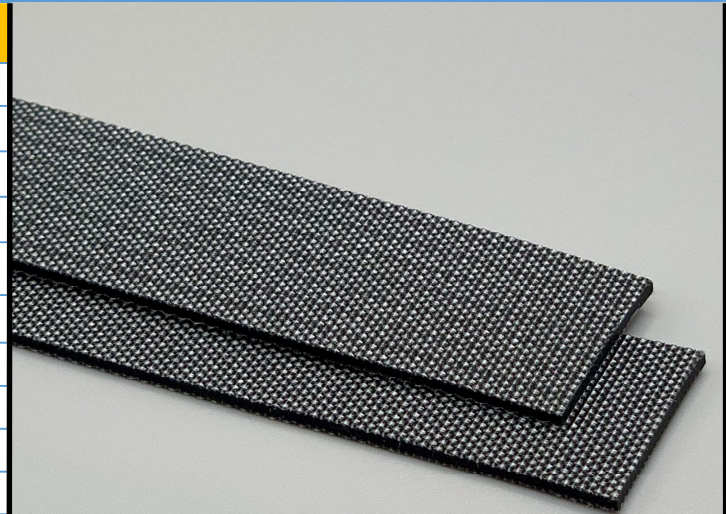
266707

2P80/01/01 Black

PVC

Material Construction

| | | |
|-------------------|-------------------------|------------------|
| Conveying Surface | Material | Polyester Fabric |
| | Profile | Skim Coat |
| | Color | Black |
| | Coefficient of friction | 0.25 |
| Tension Member | Material | Polyester Fabric |
| | Plies | 2 |
| Underside | Material | Polyester Fabric |
| | Profile | Skim Coat |
| | Color | Black |
| | Coefficient of friction | 0.25 |



Technical Specifications

| | | |
|---|------------------------|---------------------------|
| Overall Thickness | 1.60 mm | 0.063 in. |
| Weight | 1.75 kg/m ² | 0.36 lbs./ft ² |
| Maximum Width | 2,000 mm | 78.75 in. |
| Minimum Pulley/Nose Bar | | |
| Diameter for Recommended Endless Splice | 20 mm | 0.787 in. |
| Minimum Back Flex | 40 mm | 1.575 in. |
| Load for 1% Extension (Dynamic) | 8 N/mm | 45.68 lbs./in. |
| Standard Tension | | 0.5 % |
| Product Operational Temperature Range | -10/70 °C | 14/158 °F |
| Cover Durometer | N/A Shore A | |

Material Build



Features

| | | | |
|-----------------------|----|-----------------|-----|
| FDA | NO | Anti-Static | YES |
| USDA Meat and Poultry | NO | Flame Retardant | NO |
| USDA Dairy | NO | Cross Rigid | YES |
| Anti-Microbial | NO | | |

Standard Fabrications

| | | | |
|------------------------|-----|-------------------------|-----|
| Longitudinal Splice | YES | Cleats | NO |
| Guide Applied to Cover | YES | Guide Applied to Bottom | YES |
| Footed Sidewall | NO | Footless Sidewall | NO |
| Edge Capped | NO | Plastic Spiral Lace | YES |

Notes

2 Ply Monofilament - PVC Skim Coated Fabric Both Sides.

*Minimum pulley diameters can vary when mechanical lace is installed. Contact our technical team for any fabrication or application questions.

Splicing Instructions

High Speed Press Settings

| Pressure (psi) | Temperature | | Press Time | Foil Position | Foil | Release Top/Bot. |
|----------------|----------------|----------------|------------|---------------|------|---------------------------|
| | Top | Bottom | | | | |
| 30 | 165°C 329°F | 170°C 338°F | 90 s | None | None | Silicone/ Rough Teflon |

Water Cooled Press Settings

| Pressure (psi) | Temperature | | Press Time | Foil Position | Foil | Release Top/Bot. |
|----------------|----------------|----------------|------------|---------------|------|---------------------------|
| | Top | Bottom | | | | |
| 30 | 165°C 329°F | 170°C 338°F | 60 s | None | None | Silicone/ Rough Teflon |

*These settings are a guideline only, every press is different. Test splicing is recommended.

Standard Splices

| | |
|--------------|---------------|
| Endless | Single Finger |
| Clipper Lace | UCM36 SP |
| Staple Lace | RS62 |



266715

2PL130/01/0 Black FR

PVC

Material Construction

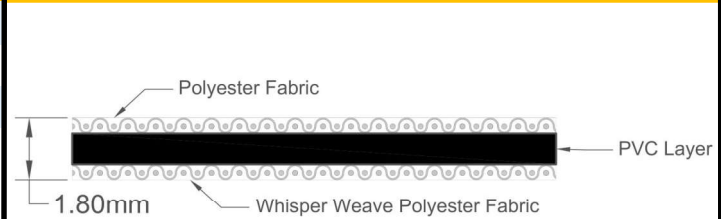
| | | | |
|----------------|-------------------------|-------------------------|-----------------------|
| Surface | Conveying | Material | Polyester Fabric |
| | Conveying | Profile | Heavy PU Impregnation |
| | Conveying | Color | Black |
| | Conveying | Coefficient of friction | N/A |
| Tension Member | Material | Polyester Fabric | |
| | Plies | 2 | |
| Underside | Material | Whisper weave polyester | |
| | Profile | PVC Impregnated | |
| | Color | Gray | |
| | Coefficient of friction | 0.20 | |



Technical Specifications

| | | |
|---|-----------------------|---------------------------|
| Overall Thickness | 1.80 mm | 0.071 in. |
| Weight | 2.2 kg/m ² | 0.45 lbs./ft ² |
| Maximum Width | 2,000 mm | 78.75 in. |
| Minimum Pulley/Nose Bar | | |
| Diameter for Recommended Endless Splice | 36 mm | 1.417 in. |
| Minimum Back Flex | 36 mm | 1.417 in. |
| Load for 1% Extension (Dynamic) | 13 N/mm | 74.23 lbs./in. |
| Standard Tension | | 0.5 % |
| Product Operational Temperature Range | -7/82 °C | 19/180 °F |
| Cover Durometer | N/A Shore A | |

Material Build



Features

| | | | |
|-----------------------|----|-----------------|-----|
| FDA | NO | Anti-Static | YES |
| USDA Meat and Poultry | NO | Flame Retardant | YES |
| USDA Dairy | NO | Cross Rigid | YES |
| Anti-Microbial | NO | | |

Standard Fabrications

| | | | |
|------------------------|-----|-------------------------|-----|
| Longitudinal Splice | YES | Cleats | NO |
| Guide Applied to Cover | YES | Guide Applied to Bottom | YES |
| Footed Sidewall | NO | Footless Sidewall | NO |
| Edge Capped | NO | Plastic Spiral Lace | YES |

Notes

Two Ply Flame Retardent with Low noise "Whisper weave" fabric bottom and low friction impregnated top fabric provides for excellent accumulation making it highly suitable for many applications.

*Minimum pulley diameters can vary when mechanical lace is installed. Contact our technical team for any fabrication or application questions.

Splicing Instructions

High Speed Press Settings

| Pressure (psi) | Temperature | | Press Time | Foil Position | Foil | Release Top/Bot. |
|----------------|----------------|----------------|------------|---------------|------|-------------------------------|
| | Top | Bottom | | | | |
| 30 | 175°C 347°F | 175°C 347°F | 120 s | None | None | Rough Teflon/ Rough Teflon |

Water Cooled Press Settings

| Pressure (psi) | Temperature | | Press Time | Foil Position | Foil | Release Top/Bot. |
|----------------|----------------|----------------|------------|---------------|------|-------------------------------|
| | Top | Bottom | | | | |
| 30 | 175°C 347°F | 175°C 347°F | 30 s | None | None | Rough Teflon/ Rough Teflon |

*These settings are a guideline only, every press is different. Test splicing is recommended.

Standard Splices

| | |
|--------------|--------------------|
| Endless | Finger Over Finger |
| Clipper Lace | UCM36 SP |
| Staple Lace | RS62 |



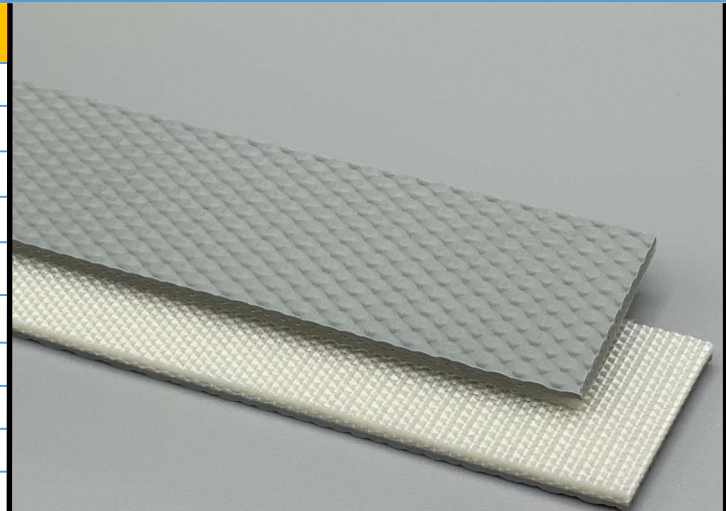
267101

2P80/SS/0 AS Gray

PVC

Material Construction

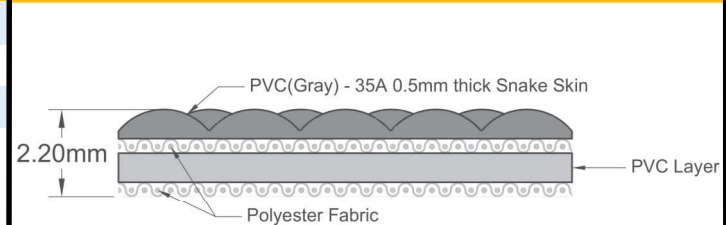
| | | | |
|----------------|-----------|-------------------------|------------------|
| Surface | Conveying | Material | PVC |
| | | Profile | Snake Skin |
| | | Color | Gray |
| | | Coefficient of friction | N/A |
| Tension Member | | Material | Polyester Fabric |
| | | Plies | 2 |
| Underside | | Material | Polyester Fabric |
| | | Profile | Impregnated |
| | | Color | White |
| | | Coefficient of friction | 0.25 |



Technical Specifications

| | | |
|---|-----------------------|---------------------------|
| Overall Thickness | 2.20 mm | 0.087 in. |
| Weight | 2.5 kg/m ² | 0.51 lbs./ft ² |
| Maximum Width | 2,000 mm | 78.75 in. |
| Minimum Pulley/Nose Bar | | |
| Diameter for Recommended Endless Splice | 30 mm | 1.181 in. |
| Minimum Back Flex | 40 mm | 1.575 in. |
| Load for 1% Extension (Dynamic) | 8 N/mm | 45.68 lbs./in. |
| Standard Tension | | 0.5 % |
| Product Operational Temperature Range | -10/70 °C | 14/158 °F |
| Cover Durometer | 35 Shore A | |

Material Build



Features

| | | | |
|-----------------------|----|-----------------|-----|
| FDA | NO | Anti-Static | YES |
| USDA Meat and Poultry | NO | Flame Retardant | NO |
| USDA Dairy | NO | Cross Rigid | YES |
| Anti-Microbial | NO | | |

Standard Fabrications

| | | | |
|------------------------|-----|-------------------------|-----|
| Longitudinal Splice | YES | Cleats | YES |
| Guide Applied to Cover | NO | Guide Applied to Bottom | YES |
| Footed Sidewall | NO | Footless Sidewall | NO |
| Edge Capped | YES | Plastic Spiral Lace | YES |

Notes

2 Ply Monofilament - cover one side with snakeskin profile

*Minimum pulley diameters can vary when mechanical lace is installed. Contact our technical team for any fabrication or application questions.

Splicing Instructions

High Speed Press Settings

| Pressure (psi) | Temperature | | Press Time | Foil Position | Foil | Release Top/Bot. |
|----------------|----------------|----------------|------------|---------------|----------|-----------------------------|
| | Top | Bottom | | | | |
| 30 | 175°C 347°F | 175°C 347°F | 240 s | Top | Grey PVC | Impression Pad/Rough Teflon |

Water Cooled Press Settings

| Pressure (psi) | Temperature | | Press Time | Foil Position | Foil | Release Top/Bot. |
|----------------|----------------|----------------|------------|---------------|----------|-----------------------------|
| | Top | Bottom | | | | |
| 30 | 175°C 347°F | 175°C 347°F | 150 s | Top | Grey PVC | Impression Pad/Rough Teflon |

*These settings are a guideline only, every press is different. Test splicing is recommended.

Standard Splices

| | |
|--------------|---------------|
| Endless | Single Finger |
| Clipper Lace | UCM36 SP |
| Staple Lace | RS62 |



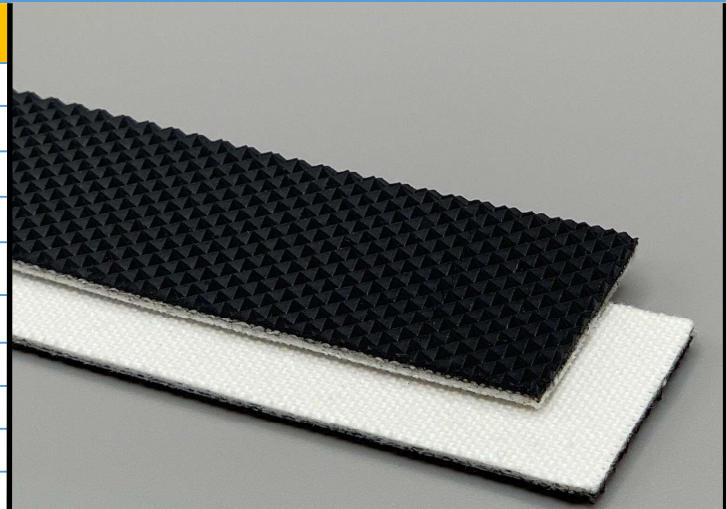
267102

2PN40/NPY/0 AS Black

PVC

Material Construction

| | | | |
|----------------|-------------------------|-------------------------|------------------|
| Surface | Conveying | Material | PVC |
| | | Profile | Negative Pyramid |
| | | Color | Black |
| | | Coefficient of friction | N/A |
| Tension Member | Material | Polyester Fabric | |
| | Plies | 2 | |
| Underside | Material | Polyester Staple Fabric | |
| | Profile | Low Noise | |
| | Color | White | |
| | Coefficient of friction | 0.25 | |



Technical Specifications

| | | |
|---|---------------------|---------------------------|
| Overall Thickness | 2.10 mm | 0.083 in. |
| Weight | 2 kg/m ² | 0.41 lbs./ft ² |
| Maximum Width | 3,073 mm | 121 in. |
| Minimum Pulley/Nose Bar | | |
| Diameter for Recommended Endless Splice | 30 mm | 1.181 in. |
| Minimum Back Flex | 40 mm | 1.575 in. |
| Load for 1% Extension (Dynamic) | 4 N/mm | 22.84 lbs./in. |
| Standard Tension | | 0.5 % |
| Product Operational Temperature Range | -10/70 °C | 14/158 °F |
| Cover Durometer | 45 Shore A | |

Features

| | | | |
|-----------------------|----|-----------------|-----|
| FDA | NO | Anti-Static | YES |
| USDA Meat and Poultry | NO | Flame Retardant | NO |
| USDA Dairy | NO | Cross Rigid | NO |
| Anti-Microbial | NO | | |

Standard Fabrications

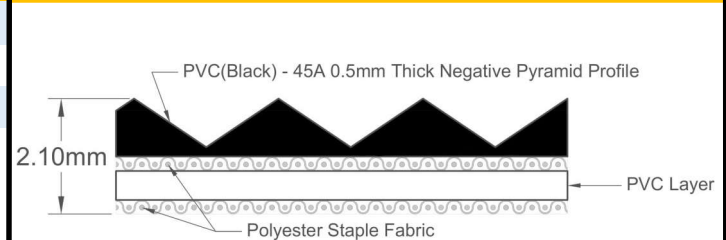
| | | | |
|------------------------|-----|-------------------------|-----|
| Longitudinal Splice | YES | Cleats | YES |
| Guide Applied to Cover | NO | Guide Applied to Bottom | YES |
| Footed Sidewall | NO | Footless Sidewall | NO |
| Edge Capped | YES | Plastic Spiral Lace | YES |

Notes

Quiet running and extremely flexible, this product is highly suited for 45 degree logistics transfers, carrier cells, packaging applications, troughing requirements, inclines and a variety of general transport needs where positive top side grip is needed.

*Minimum pulley diameters can vary when mechanical lace is installed. Contact our technical team for any fabrication or application questions.

Material Build



Splicing Instructions

High Speed Press Settings

| Pressure (psi) | Temperature | | Press Time | Foil Position | Foil | Release Top/Bot. |
|----------------|----------------|----------------|------------|---------------|-----------|-----------------------------|
| | Top | Bottom | | | | |
| 30 | 175°C 347°F | 175°C 347°F | 240 s | Top | Black PVC | Impression Pad/Rough Teflon |

Water Cooled Press Settings

| Pressure (psi) | Temperature | | Press Time | Foil Position | Foil | Release Top/Bot. |
|----------------|----------------|----------------|------------|---------------|-----------|-----------------------------|
| | Top | Bottom | | | | |
| 30 | 175°C 347°F | 170°C 338°F | 210 s | Top | Black PVC | Impression Pad/Rough Teflon |

*These settings are a guideline only, every press is different. Test splicing is recommended.

Standard Splices

| | |
|--------------|---------------|
| Endless | Single Finger |
| Clipper Lace | UCM36 SP |
| Staple Lace | RS62 |



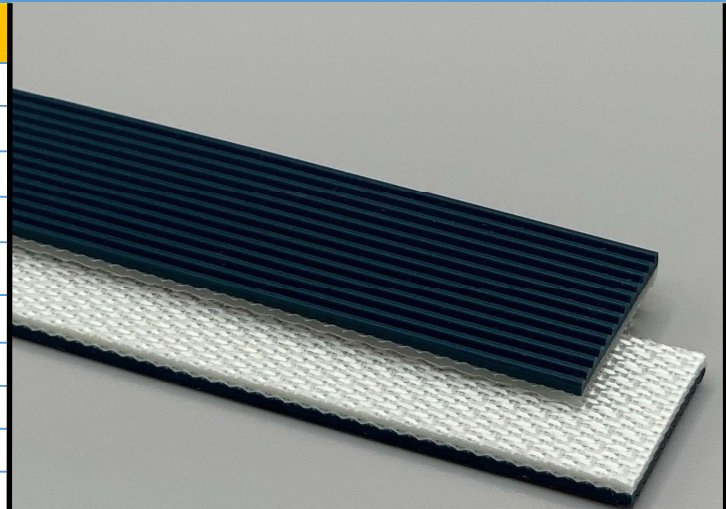
267110

2P70/GP/0 AS Green

PVC

Material Construction

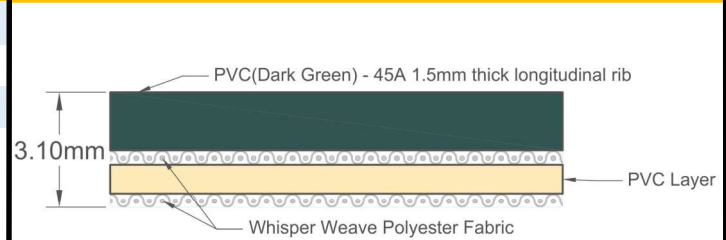
| | | | |
|----------------|-------------------------|-------------------------|---------------------|
| Surface | Conveying | Material | PVC |
| | | Profile | Longitudinal ribbed |
| | | Color | Dark Green |
| | | Coefficient of friction | N/A |
| Tension Member | Material | Polyester Fabric | |
| | Plies | 2 | |
| Underside | Material | Whisper weave polyester | |
| | Profile | Impregnated / Low Noise | |
| | Color | Gray | |
| | Coefficient of friction | 0.19 | |



Technical Specifications

| | | |
|---|-----------------------|--------------------------|
| Overall Thickness | 3.10 mm | 0.122 in. |
| Weight | 3.4 kg/m ² | 0.7 lbs./ft ² |
| Maximum Width | 2,000 mm | 78.75 in. |
| Minimum Pulley/Nose Bar | | |
| Diameter for Recommended Endless Splice | 30 mm | 1.181 in. |
| Minimum Back Flex | 40 mm | 1.575 in. |
| Load for 1% Extension (Dynamic) | 8 N/mm | 45.68 lbs./in. |
| Standard Tension | | 0.5 % |
| Product Operational Temperature Range | -10/70 °C | 14/158 °F |
| Cover Durometer | 45 Shore A | |

Material Build



Features

| | | | |
|-----------------------|----|-----------------|-----|
| FDA | NO | Anti-Static | YES |
| USDA Meat and Poultry | NO | Flame Retardant | NO |
| USDA Dairy | NO | Cross Rigid | YES |
| Anti-Microbial | NO | | |

Standard Fabrications

| | | | |
|------------------------|-----|-------------------------|-----|
| Longitudinal Splice | YES | Cleats | YES |
| Guide Applied to Cover | NO | Guide Applied to Bottom | YES |
| Footed Sidewall | NO | Footless Sidewall | NO |
| Edge Capped | YES | Plastic Spiral Lace | YES |

Notes

2 Ply low noise Monofilament - cover one side with longitudinal ribbed profile

*Minimum pulley diameters can vary when mechanical lace is installed. Contact our technical team for any fabrication or application questions.

Splicing Instructions

High Speed Press Settings

| Pressure (psi) | Temperature | | Press Time | Foil Position | Foil | Release Top/Bot. |
|----------------|----------------|----------------|------------|---------------|-----------|-----------------------------|
| | Top | Bottom | | | | |
| 30 | 175°C 347°F | 175°C 347°F | 240 s | Top | Green PVC | Impression Pad/Rough Teflon |

Water Cooled Press Settings

| Pressure (psi) | Temperature | | Press Time | Foil Position | Foil | Release Top/Bot. |
|----------------|----------------|----------------|------------|---------------|-----------|-----------------------------|
| | Top | Bottom | | | | |
| 30 | 175°C 347°F | 175°C 347°F | 150 s | Top | Green PVC | Impression Pad/Rough Teflon |

*These settings are a guideline only, every press is different. Test splicing is recommended.

Standard Splices

| | |
|--------------|---------------|
| Endless | Single Finger |
| Clipper Lace | UCM36 |
| Staple Lace | RS62 |



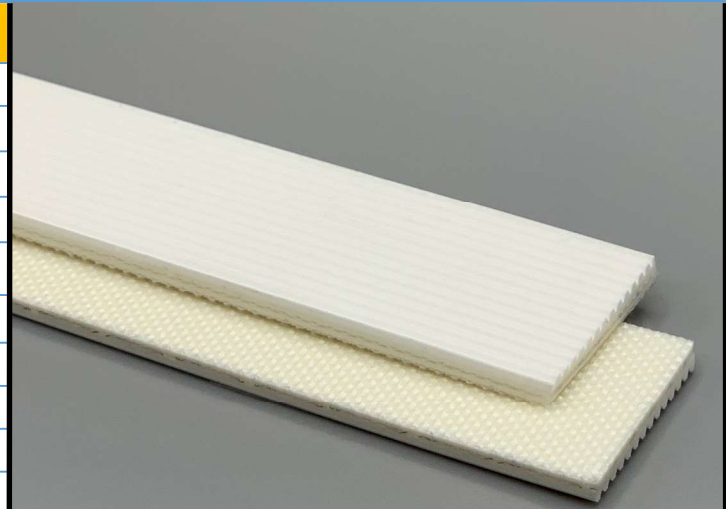
267125

2P100/GP/0 White

PVC

Material Construction

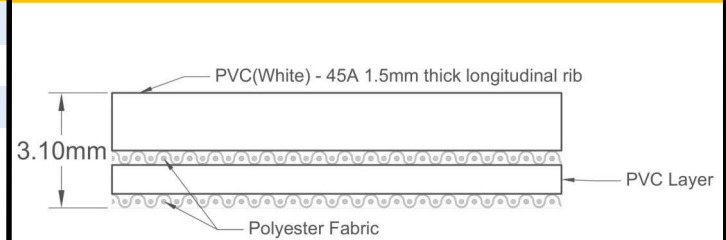
| | | | |
|----------------|-----------|-------------------------|---------------------|
| Surface | Conveying | Material | PVC |
| | | Profile | Longitudinal ribbed |
| | | Color | White |
| | | Coefficient of friction | N/A |
| Tension Member | | Material | Polyester Fabric |
| | | Plies | 2 |
| Underside | | Material | Polyester Fabric |
| | | Profile | Impregnated |
| | | Color | White |
| | | Coefficient of friction | 0.25 |



Technical Specifications

| | | |
|---|-----------------------|--------------------------|
| Overall Thickness | 3.10 mm | 0.122 in. |
| Weight | 3.4 kg/m ² | 0.7 lbs./ft ² |
| Maximum Width | 2,000 mm | 78.75 in. |
| Minimum Pulley/Nose Bar | | |
| Diameter for Recommended Endless Splice | 40 mm | 1.575 in. |
| Minimum Back Flex | 60 mm | 2.362 in. |
| Load for 1% Extension (Dynamic) | 7 N/mm | 39.97 lbs./in. |
| Standard Tension | | 0.5 % |
| Product Operational Temperature Range | -10/70 °C | 14/158 °F |
| Cover Durometer | 45 Shore A | |

Material Build



Features

| | | | |
|-----------------------|-----|-----------------|-----|
| FDA | YES | Anti-Static | YES |
| USDA Meat and Poultry | NO | Flame Retardant | NO |
| USDA Dairy | NO | Cross Rigid | YES |
| Anti-Microbial | NO | | |

Standard Fabrications

| | | | |
|------------------------|-----|-------------------------|-----|
| Longitudinal Splice | YES | Cleats | YES |
| Guide Applied to Cover | NO | Guide Applied to Bottom | YES |
| Footed Sidewall | NO | Footless Sidewall | NO |
| Edge Capped | YES | Plastic Spiral Lace | YES |

Notes

2 Ply Monofilament - cover one side with longitudinal ribbed profile

*Minimum pulley diameters can vary when mechanical lace is installed. Contact our technical team for any fabrication or application questions.

Splicing Instructions

High Speed Press Settings

| Pressure (psi) | Temperature | | Press Time | Foil Position | Foil | Release Top/Bot. |
|----------------|----------------|----------------|------------|---------------|-----------|-----------------------------|
| | Top | Bottom | | | | |
| 30 | 175°C 347°F | 175°C 347°F | 210 s | Top | White PVC | Impression Pad/Rough Teflon |

Water Cooled Press Settings

| Pressure (psi) | Temperature | | Press Time | Foil Position | Foil | Release Top/Bot. |
|----------------|----------------|----------------|------------|---------------|-----------|-----------------------------|
| | Top | Bottom | | | | |
| 30 | 175°C 347°F | 175°C 347°F | 150 s | Top | White PVC | Impression Pad/Rough Teflon |

*These settings are a guideline only, every press is different. Test splicing is recommended.

Standard Splices

| | |
|--------------|---------------|
| Endless | Single Finger |
| Clipper Lace | UCM36 |
| Staple Lace | RS62 |



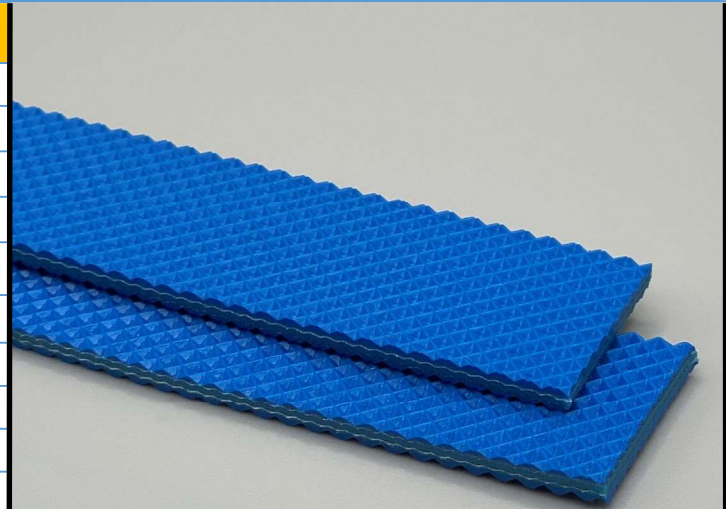
267151

2P80/08F/05F Blue

PVC

Material Construction

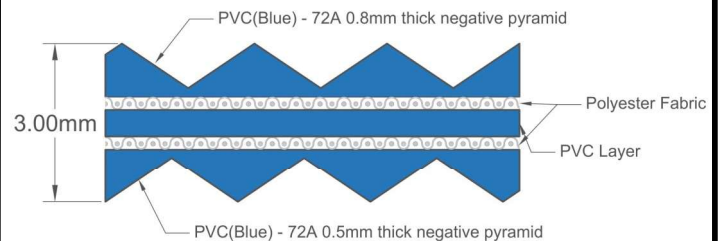
| | | | |
|----------------|-------------------------|-------------------------|------------------|
| Surface | Conveying | Material | PVC |
| | | Profile | Negative Pyramid |
| | | Color | Blue |
| | | Coefficient of friction | 0.35 |
| Tension Member | Material | Polyester Fabric | |
| | Plies | 2 | |
| Underside | Material | PVC | |
| | Profile | Negative Pyramid | |
| | Color | Blue | |
| | Coefficient of friction | 0.35 | |



Technical Specifications

| | | |
|---|-----------------------|---------------------------|
| Overall Thickness | 3.00 mm | 0.118 in. |
| Weight | 3.5 kg/m ² | 0.72 lbs./ft ² |
| Maximum Width | 2,000 mm | 78.75 in. |
| Minimum Pulley/Nose Bar | | |
| Diameter for Recommended Endless Splice | 50 mm | 1.969 in. |
| Minimum Back Flex | 75 mm | 2.953 in. |
| Load for 1% Extension (Dynamic) | 8 N/mm | 45.68 lbs./in. |
| Standard Tension | | 0.5 % |
| Product Operational Temperature Range | -10/70 °C | 14/158 °F |
| Cover Durometer | 72 Shore A | |

Material Build



Features

| | | | |
|-----------------------|-----|-----------------|-----|
| FDA | YES | Anti-Static | NO |
| USDA Meat and Poultry | NO | Flame Retardant | NO |
| USDA Dairy | NO | Cross Rigid | YES |
| Anti-Microbial | NO | | |

Standard Fabrications

| | | | |
|------------------------|-----|-------------------------|-----|
| Longitudinal Splice | YES | Cleats | YES |
| Guide Applied to Cover | YES | Guide Applied to Bottom | YES |
| Footed Sidewall | NO | Footless Sidewall | NO |
| Edge Capped | YES | Plastic Spiral Lace | YES |

Notes

2 Ply Monofilament - Negative pyramid both sides

*Minimum pulley diameters can vary when mechanical lace is installed. Contact our technical team for any fabrication or application questions.

Splicing Instructions

High Speed Press Settings

| Pressure (psi) | Temperature | | Press Time | Foil Position | Foil | Release Top/Bot. |
|----------------|----------------|----------------|------------|---------------|----------|-----------------------------|
| | Top | Bottom | | | | |
| 30 | 175°C 347°F | 175°C 347°F | 210 s | Top | Blue PVC | Impression Pad/Rough Teflon |

Water Cooled Press Settings

| Pressure (psi) | Temperature | | Press Time | Foil Position | Foil | Release Top/Bot. |
|----------------|----------------|----------------|------------|---------------|----------|-----------------------------|
| | Top | Bottom | | | | |
| 30 | 175°C 347°F | 175°C 347°F | 150 s | Top | Blue PVC | Impression Pad/Rough Teflon |

*These settings are a guideline only, every press is different. Test splicing is recommended.

Standard Splices

| | |
|--------------|---------------|
| Endless | Single Finger |
| Clipper Lace | UCM36 |
| Staple Lace | RS62 |



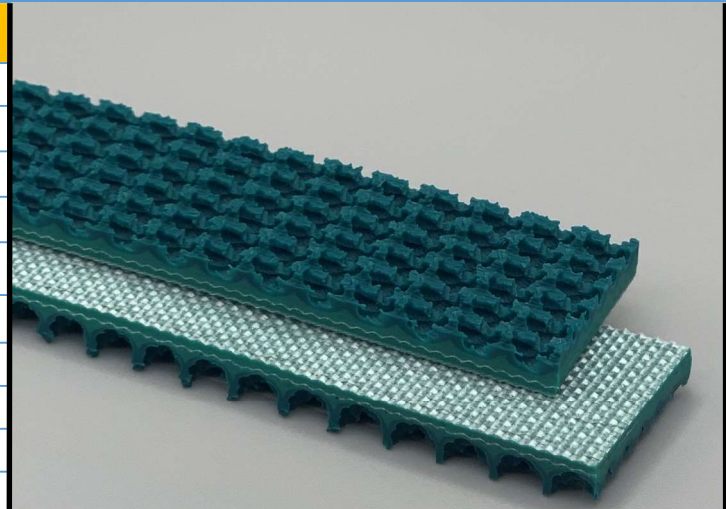
267201

2P80/SG/0 AS Green

PVC

Material Construction

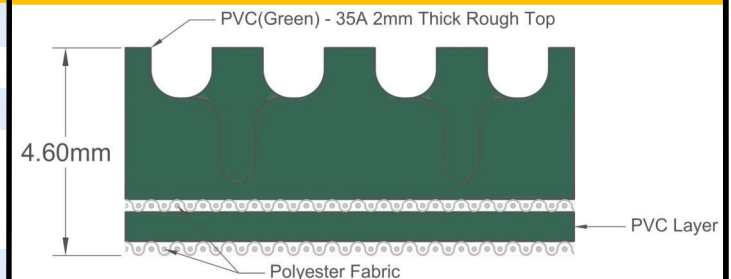
| | | | |
|-----------|-----------|-------------------------|------------------|
| Surface | Conveying | Material | PVC |
| | | Profile | Rough top |
| | | Color | Green |
| | | Coefficient of friction | N/A |
| Member | Tension | Material | Polyester Fabric |
| | | Plies | 2 |
| Underside | Under | Material | Polyester Fabric |
| | | Profile | Bare |
| | | Color | Gray |
| | | Coefficient of friction | 0.25 |



Technical Specifications

| | | |
|---|-----------------------|---------------------------|
| Overall Thickness | 4.60 mm | 0.181 in. |
| Weight | 3.6 kg/m ² | 0.74 lbs./ft ² |
| Maximum Width | 2,000 mm | 78.75 in. |
| Minimum Pulley/Nose Bar | | |
| Diameter for Recommended Endless Splice | 24 mm | 0.945 in. |
| Minimum Back Flex | 40 mm | 1.575 in. |
| Load for 1% Extension (Dynamic) | 5 N/mm | 28.55 lbs./in. |
| Standard Tension | | 0.5 % |
| Product Operational Temperature Range | -10/70 °C | 14/158 °F |
| Cover Durometer | 35 Shore A | |

Material Build



Features

| | | | |
|-----------------------|----|-----------------|-----|
| FDA | NO | Anti-Static | YES |
| USDA Meat and Poultry | NO | Flame Retardant | NO |
| USDA Dairy | NO | Cross Rigid | YES |
| Anti-Microbial | NO | | |

Standard Fabrications

| | | | |
|------------------------|-----|-------------------------|-----|
| Longitudinal Splice | YES | Cleats | YES |
| Guide Applied to Cover | NO | Guide Applied to Bottom | YES |
| Footed Sidewall | NO | Footless Sidewall | NO |
| Edge Capped | YES | Plastic Spiral Lace | YES |

Notes

2 Ply Monofilament - cover one side with rough top profile

*Minimum pulley diameters can vary when mechanical lace is installed. Contact our technical team for any fabrication or application questions.

Splicing Instructions

High Speed Press Settings

| Pressure (psi) | Temperature | | Press Time | Foil Position | Foil | Release Top/Bot. |
|----------------|----------------|----------------|------------|---------------|-----------|-----------------------------|
| | Top | Bottom | | | | |
| 30 | 175°C 347°F | 175°C 347°F | 240 s | Top | Green PVC | Impression Pad/Rough Teflon |

Water Cooled Press Settings

| Pressure (psi) | Temperature | | Press Time | Foil Position | Foil | Release Top/Bot. |
|----------------|----------------|----------------|------------|---------------|-----------|-----------------------------|
| | Top | Bottom | | | | |
| 30 | 175°C 347°F | 175°C 347°F | 150 s | Top | Green PVC | Impression Pad/Rough Teflon |

*These settings are a guideline only, every press is different. Test splicing is recommended.

Standard Splices

| | |
|--------------|-------------------|
| Endless | Single Finger |
| Clipper Lace | Recessed UCM36 SP |
| Staple Lace | RS62 Recessed |



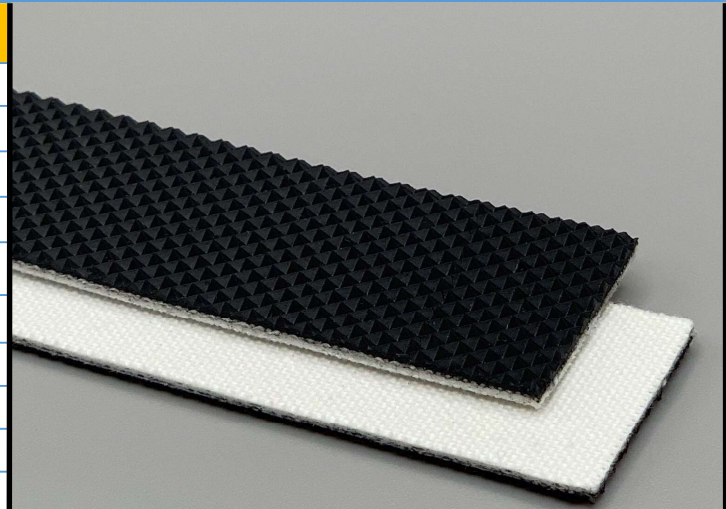
267271

2PN40/NPY/0 AS FR Black

PVC

Material Construction

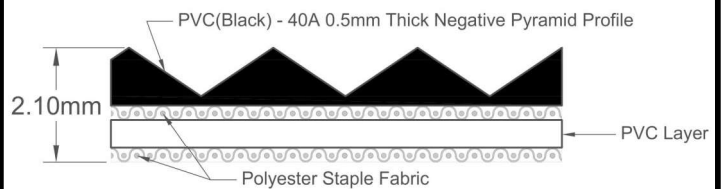
| | | |
|-------------------|-------------------------|-------------------------|
| Conveying Surface | Material | PVC |
| | Profile | Negative Pyramid |
| | Color | Black |
| | Coefficient of friction | N/A |
| Tension Member | Material | Polyester Fabric |
| | Plies | 2 |
| Underside | Material | Polyester Staple Fabric |
| | Profile | Low Noise |
| | Color | White |
| | Coefficient of friction | 0.25 |



Technical Specifications

| | | |
|---|-----------------------|---------------------------|
| Overall Thickness | 2.10 mm | 0.083 in. |
| Weight | 2.1 kg/m ² | 0.43 lbs./ft ² |
| Maximum Width | 1,650 mm | 64.961 in. |
| Minimum Pulley/Nose Bar | | |
| Diameter for Recommended Endless Splice | 30 mm | 1.181 in. |
| Minimum Back Flex | 40 mm | 1.575 in. |
| Load for 1% Extension (Dynamic) | 4 N/mm | 22.84 lbs./in. |
| Standard Tension | | 0.5 % |
| Product Operational Temperature Range | -10/70 °C | 14/158 °F |
| Cover Durometer | 40 Shore A | |

Material Build



Features

| | | | |
|-----------------------|----|-----------------|-----|
| FDA | NO | Anti-Static | YES |
| USDA Meat and Poultry | NO | Flame Retardant | YES |
| USDA Dairy | NO | Cross Rigid | NO |
| Anti-Microbial | NO | | |

Standard Fabrications

| | | | |
|------------------------|-----|-------------------------|-----|
| Longitudinal Splice | YES | Cleats | YES |
| Guide Applied to Cover | YES | Guide Applied to Bottom | YES |
| Footed Sidewall | NO | Footless Sidewall | NO |
| Edge Capped | YES | Plastic Spiral Lace | YES |

Notes

Flame retardant construction with quiet running bottom fabric is extremely flexible and highly suited for 45 degree logistics transfers, carrier cells, packaging applications, troughing requirements, includes and a variety of general transport needs where

*Minimum pulley diameters can vary when mechanical lace is installed. Contact our technical team for any fabrication or application questions.

Splicing Instructions

High Speed Press Settings

| Pressure (psi) | Temperature | | Press Time | Foil Position | Foil | Release Top/Bot. |
|----------------|----------------|----------------|------------|---------------|-----------|-----------------------------|
| | Top | Bottom | | | | |
| 30 | 175°C 347°F | 175°C 347°F | 240 s | Top | Black PVC | Impression Pad/Rough Teflon |

Water Cooled Press Settings

| Pressure (psi) | Temperature | | Press Time | Foil Position | Foil | Release Top/Bot. |
|----------------|----------------|----------------|------------|---------------|-----------|-----------------------------|
| | Top | Bottom | | | | |
| 30 | 175°C 347°F | 170°C 338°F | 210 s | Top | Black PVC | Impression Pad/Rough Teflon |

*These settings are a guideline only, every press is different. Test splicing is recommended.

Standard Splices

| | |
|--------------|---------------|
| Endless | Single Finger |
| Clipper Lace | UCM36 SP |
| Staple Lace | RS62 |



268205

2PL70/07/0 AS MT White

PVC

Material Construction

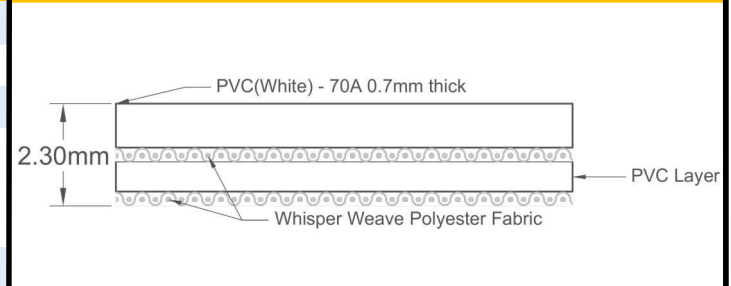
| | | | |
|----------------|-----------|-------------------------|-------------------------|
| Surface | Conveying | Material | PVC |
| | | Profile | Matt |
| | | Color | White |
| | | Coefficient of friction | N/A |
| Tension Member | | Material | Polyester Fabric |
| | | Plies | 2 |
| Underside | | Material | Whisper weave polyester |
| | | Profile | Impregnated / Low Noise |
| | | Color | White |
| | | Coefficient of friction | 0.20 |



Technical Specifications

| | | |
|---|-----------------------|---------------------------|
| Overall Thickness | 2.30 mm | 0.091 in. |
| Weight | 2.6 kg/m ² | 0.53 lbs./ft ² |
| Maximum Width | 3,000 mm | 118.125 in. |
| Minimum Pulley/Nose Bar | | |
| Diameter for Recommended Endless Splice | 40 mm | 1.575 in. |
| Minimum Back Flex | 50 mm | 1.969 in. |
| Load for 1% Extension (Dynamic) | 8 N/mm | 45.68 lbs./in. |
| Standard Tension | | 0.5 % |
| Product Operational Temperature Range | -10/80 °C | 14/176 °F |
| Cover Durometer | 70 Shore A | |

Material Build



Features

| | | | |
|-----------------------|-----|-----------------|-----|
| FDA | YES | Anti-Static | YES |
| USDA Meat and Poultry | NO | Flame Retardant | NO |
| USDA Dairy | NO | Cross Rigid | YES |
| Anti-Microbial | NO | | |

Standard Fabrications

| | | | |
|------------------------|-----|-------------------------|-----|
| Longitudinal Splice | YES | Cleats | YES |
| Guide Applied to Cover | YES | Guide Applied to Bottom | YES |
| Footed Sidewall | YES | Footless Sidewall | NO |
| Edge Capped | YES | Plastic Spiral Lace | YES |

Notes

2 Ply Monofilament - cover one side. Whisper weave bottom fabric for quiet operation

Splicing Instructions

High Speed Press Settings

| Pressure (psi) | Temperature | | Press Time | Foil Position | Foil | Release Top/Bot. |
|----------------|----------------|----------------|------------|---------------|-----------|------------------------|
| | Top | Bottom | | | | |
| 30 | 175°C 347°F | 175°C 347°F | 240 s | Top | White PVC | Matte/ Rough Teflon |

Water Cooled Press Settings

| Pressure (psi) | Temperature | | Press Time | Foil Position | Foil | Release Top/Bot. |
|----------------|----------------|----------------|------------|---------------|-----------|------------------------|
| | Top | Bottom | | | | |
| 30 | 175°C 347°F | 175°C 347°F | 150 s | Top | White PVC | Matte/ Rough Teflon |

*These settings are a guideline only, every press is different. Test splicing is recommended.

Standard Splices

| | |
|--------------|---------------|
| Endless | Single Finger |
| Clipper Lace | UCM36 |
| Staple Lace | RS62 |

*Minimum pulley diameters can vary when mechanical lace is installed. Contact our technical team for any fabrication or application questions.



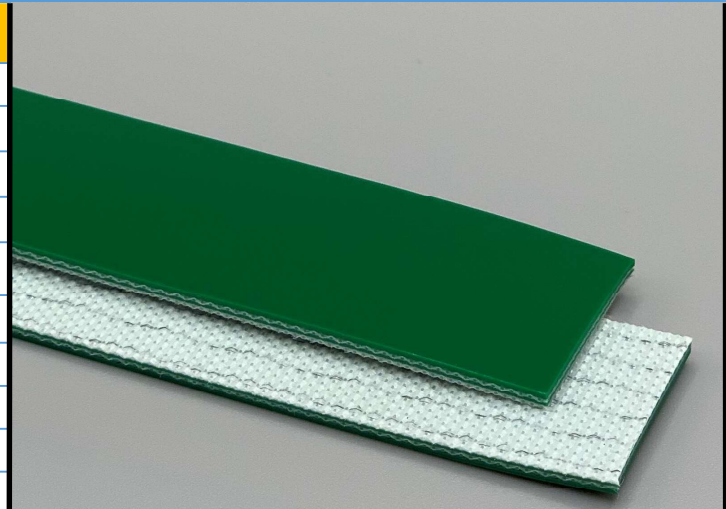
268210

2P80/05/0 G Apple Green

PVC

Material Construction

| | | | |
|----------------|-----------|-------------------------|------------------|
| Surface | Conveying | Material | PVC |
| | | Profile | Glossy |
| | | Color | Apple Green |
| | | Coefficient of friction | N/A |
| Tension Member | | Material | Polyester Fabric |
| | | Plies | 2 |
| Underside | | Material | Polyester Fabric |
| | | Profile | Impregnated |
| | | Color | White |
| | | Coefficient of friction | 0.25 |



Technical Specifications

| | | |
|---|------------------------|--------------------------|
| Overall Thickness | 2.00 mm | 0.079 in. |
| Weight | 2.46 kg/m ² | 0.5 lbs./ft ² |
| Maximum Width | 3,000 mm | 118.125 in. |
| Minimum Pulley/Nose Bar | | |
| Diameter for Recommended Endless Splice | 30 mm | 1.181 in. |
| Minimum Back Flex | 40 mm | 1.575 in. |
| Load for 1% Extension (Dynamic) | 8 N/mm | 45.68 lbs./in. |
| Standard Tension | | 0.5 % |
| Product Operational Temperature Range | -10/80 °C | 14/176 °F |
| Cover Durometer | 80 Shore A | |

Features

| | | | |
|-----------------------|-----|-----------------|-----|
| FDA | YES | Anti-Static | YES |
| USDA Meat and Poultry | NO | Flame Retardant | NO |
| USDA Dairy | NO | Cross Rigid | YES |
| Anti-Microbial | NO | | |

Standard Fabrications

| | | | |
|------------------------|-----|-------------------------|-----|
| Longitudinal Splice | YES | Cleats | YES |
| Guide Applied to Cover | YES | Guide Applied to Bottom | YES |
| Footed Sidewall | YES | Footless Sidewall | NO |
| Edge Capped | YES | Plastic Spiral Lace | YES |

Notes

2 Ply Monofilament - cover one side, noimpregation on bottom fabric

*Minimum pulley diameters can vary when mechanical lace is installed. Contact our technical team for any fabrication or application questions.

Material Build



Splicing Instructions

High Speed Press Settings

| Pressure (psi) | Temperature | | Press Time | Foil Position | Foil | Release Top/Bot. |
|----------------|----------------|----------------|------------|---------------|-----------------|--------------------|
| | Top | Bottom | | | | |
| 30 | 175°C 347°F | 175°C 347°F | 240 s | Top | Apple Green PVC | Gloss/Rough Teflon |

Water Cooled Press Settings

| Pressure (psi) | Temperature | | Press Time | Foil Position | Foil | Release Top/Bot. |
|----------------|----------------|----------------|------------|---------------|-----------------|--------------------|
| | Top | Bottom | | | | |
| 30 | 175°C 347°F | 175°C 347°F | 180 s | Top | Apple Green PVC | Gloss/Rough Teflon |

*These settings are a guideline only, every press is different. Test splicing is recommended.

Standard Splices

| | |
|--------------|---------------|
| Endless | Single Finger |
| Clipper Lace | UCM36 SP |
| Staple Lace | RS62 |



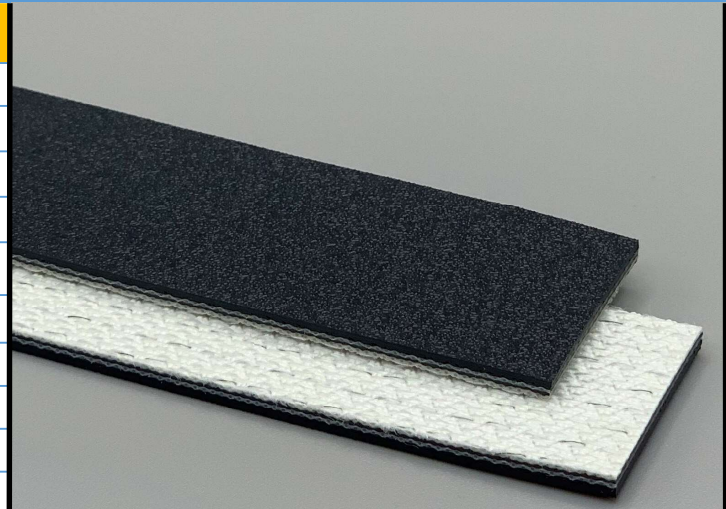
268250

2PL100/05/0 AS FR M3 Black

PVC

Material Construction

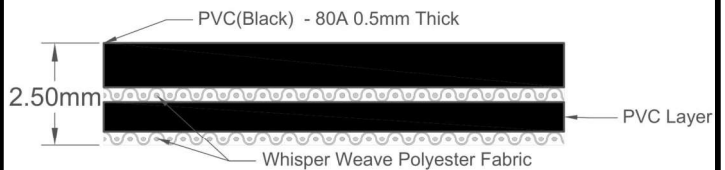
| | | | |
|----------------|-------------------------|-------------------------|-----------------------|
| Surface | Conveying | Material | PVC |
| | | Profile | M3 Coarse Matt Finish |
| | | Color | Black |
| | | Coefficient of friction | N/A |
| Tension Member | Material | Polyester Fabric | |
| | Plies | 2 | |
| Underside | Material | Whisper weave polyester | |
| | Profile | Impregnated / Low Noise | |
| | Color | White | |
| | Coefficient of friction | 0.20 | |



Technical Specifications

| | | |
|---|-----------------------|---------------------------|
| Overall Thickness | 2.50 mm | 0.098 in. |
| Weight | 2.6 kg/m ² | 0.53 lbs./ft ² |
| Maximum Width | 3,000 mm | 118.125 in. |
| Minimum Pulley/Nose Bar | | |
| Diameter for Recommended Endless Splice | 50 mm | 1.969 in. |
| Minimum Back Flex | 60 mm | 2.362 in. |
| Load for 1% Extension (Dynamic) | 10 N/mm | 57.10 lbs./in. |
| Standard Tension | | 0.5 % |
| Product Operational Temperature Range | -10/80 °C | 14/176 °F |
| Cover Durometer | 80 Shore A | |

Material Build



Features

| | | | |
|-----------------------|----|-----------------|-----|
| FDA | NO | Anti-Static | YES |
| USDA Meat and Poultry | NO | Flame Retardant | YES |
| USDA Dairy | NO | Cross Rigid | YES |
| Anti-Microbial | NO | | |

Standard Fabrications

| | | | |
|------------------------|-----|-------------------------|-----|
| Longitudinal Splice | YES | Cleats | YES |
| Guide Applied to Cover | YES | Guide Applied to Bottom | YES |
| Footed Sidewall | YES | Footless Sidewall | NO |
| Edge Capped | YES | Plastic Spiral Lace | YES |

Notes

Energy saving product with quiet running whisper weave bottom and heavy matte finish top. Great for warehouse and logistics applications. Product is ISO-340 flame retardant compliant

*Minimum pulley diameters can vary when mechanical lace is installed. Contact our technical team for any fabrication or application questions.

Splicing Instructions

High Speed Press Settings

| Pressure (psi) | Temperature | | Press Time | Foil Position | Foil | Release Top/Bot. |
|----------------|----------------|----------------|------------|---------------|-----------|------------------------|
| | Top | Bottom | | | | |
| 30 | 175°C 347°F | 175°C 347°F | 420 s | Top | Black PVC | Matte/ Rough Teflon |

Water Cooled Press Settings

| Pressure (psi) | Temperature | | Press Time | Foil Position | Foil | Release Top/Bot. |
|----------------|----------------|----------------|------------|---------------|-----------|------------------------|
| | Top | Bottom | | | | |
| 30 | 175°C 347°F | 170°C 338°F | 360 s | Top | Black PVC | Matte/ Rough Teflon |

*These settings are a guideline only, every press is different. Test splicing is recommended.

Standard Splices

| | |
|--------------|---------------|
| Endless | Single Finger |
| Clipper Lace | UCM36 |
| Staple Lace | RS62 |



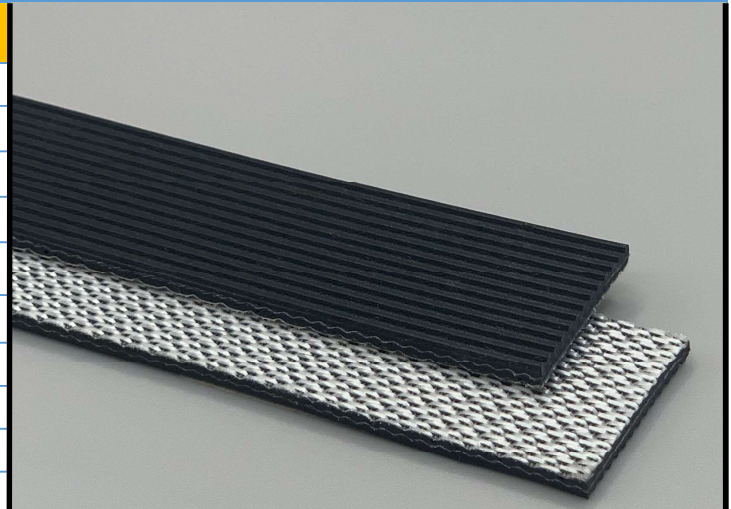
268255

2PL100/GP/0 AS FR Black

PVC

Material Construction

| | | |
|-------------------|-------------------------|-------------------------|
| Conveying Surface | Material | PVC |
| | Profile | Longitudinal ribbed |
| | Color | Black |
| | Coefficient of friction | N/A |
| Tension Member | Material | Polyester Fabric |
| | Plies | 2 |
| Underside | Material | Whisper weave polyester |
| | Profile | Impregnated / Low Noise |
| | Color | White |
| | Coefficient of friction | 0.25 |



Technical Specifications

| | | |
|---|---------------------|---------------------------|
| Overall Thickness | 2.80 mm | 0.11 in. |
| Weight | 3 kg/m ² | 0.61 lbs./ft ² |
| Maximum Width | 3,000 mm | 118.125 in. |
| Minimum Pulley/Nose Bar | | |
| Diameter for Recommended Endless Splice | 50 mm | 1.969 in. |
| Minimum Back Flex | 60 mm | 2.362 in. |
| Load for 1% Extension (Dynamic) | 8 N/mm | 45.68 lbs./in. |
| Standard Tension | | 0.5 % |
| Product Operational Temperature Range | -10/70 °C | 14/158 °F |
| Cover Durometer | 40 Shore A | |

Material Build



Features

| | | | |
|-----------------------|----|-----------------|-----|
| FDA | NO | Anti-Static | YES |
| USDA Meat and Poultry | NO | Flame Retardant | YES |
| USDA Dairy | NO | Cross Rigid | YES |
| Anti-Microbial | NO | | |

Standard Fabrications

| | | | |
|------------------------|-----|-------------------------|-----|
| Longitudinal Splice | YES | Cleats | YES |
| Guide Applied to Cover | NO | Guide Applied to Bottom | YES |
| Footed Sidewall | NO | Footless Sidewall | NO |
| Edge Capped | YES | Plastic Spiral Lace | YES |

Notes

Energy saving product with quiet running whisper weave bottom and high grip longitudinal ribbed top. Great for incline and decline applications. Product is ISO-340 flame retardant compliant

*Minimum pulley diameters can vary when mechanical lace is installed. Contact our technical team for any fabrication or application questions.

Splicing Instructions

High Speed Press Settings

| Pressure (psi) | Temperature | | Press Time | Foil Position | Foil | Release Top/Bot. |
|----------------|----------------|----------------|------------|---------------|-----------|-----------------------------|
| | Top | Bottom | | | | |
| 30 | 175°C 347°F | 175°C 347°F | 360 s | Top | Black PVC | Impression Pad/Rough Teflon |

Water Cooled Press Settings

| Pressure (psi) | Temperature | | Press Time | Foil Position | Foil | Release Top/Bot. |
|----------------|----------------|----------------|------------|---------------|-----------|-----------------------------|
| | Top | Bottom | | | | |
| 30 | 180°C 356°F | 170°C 338°F | 240 s | Top | Black PVC | Impression Pad/Rough Teflon |

*These settings are a guideline only, every press is different. Test splicing is recommended.

Standard Splices

| | |
|--------------|---------------|
| Endless | Single Finger |
| Clipper Lace | UCM36 |
| Staple Lace | RS62 |



268260

3PL120/01/01 AS FR Black

PVC

Material Construction

| | | |
|-------------------|-------------------------|-------------------------|
| Conveying Surface | Material | Whisper weave polyester |
| | Profile | Impregnated / Low Noise |
| | Color | Black |
| | Coefficient of friction | 0.2 |
| Tension Member | Material | Polyester Fabric |
| | Plies | 3 |
| Underside | Material | Whisper weave polyester |
| | Profile | Impregnated / Low Noise |
| | Color | Black |
| | Coefficient of friction | 0.20 |



Technical Specifications

| | | |
|---|---------------------|---------------------------|
| Overall Thickness | 2.80 mm | 0.11 in. |
| Weight | 3 kg/m ² | 0.61 lbs./ft ² |
| Maximum Width | 3,000 mm | 118.125 in. |
| Minimum Pulley/Nose Bar | | |
| Diameter for Recommended Endless Splice | 50 mm | 1.969 in. |
| Minimum Back Flex | 50 mm | 1.969 in. |
| Load for 1% Extension (Dynamic) | 12 N/mm | 68.52 lbs./in. |
| Standard Tension | | 0.5 % |
| Product Operational Temperature Range | -10/80 °C | 14/176 °F |
| Cover Durometer | N/A Shore A | |

Material Build



Features

| | | | |
|-----------------------|----|-----------------|-----|
| FDA | NO | Anti-Static | YES |
| USDA Meat and Poultry | NO | Flame Retardant | YES |
| USDA Dairy | NO | Cross Rigid | YES |
| Anti-Microbial | NO | | |

Standard Fabrications

| | | | |
|------------------------|-----|-------------------------|-----|
| Longitudinal Splice | YES | Cleats | NO |
| Guide Applied to Cover | YES | Guide Applied to Bottom | YES |
| Footed Sidewall | NO | Footless Sidewall | NO |
| Edge Capped | NO | Plastic Spiral Lace | YES |

Notes

Energy saving-quiet running 3 ply whisper weave monofilament with low friction top and bottom surfaces. Great for accumulation, diverting applications etc. Product is ISO-340 flame retardant compliant

*Minimum pulley diameters can vary when mechanical lace is installed. Contact our technical team for any fabrication or application questions.

Splicing Instructions

High Speed Press Settings

| Pressure (psi) | Temperature | | Press Time | Foil Position | Foil | Release Top/Bot. |
|----------------|----------------|----------------|------------|---------------|------|-------------------------------|
| | Top | Bottom | | | | |
| 30 | 175°C 347°F | 175°C 347°F | 360 s | None | None | Rough Teflon/ Rough Teflon |

Water Cooled Press Settings

| Pressure (psi) | Temperature | | Press Time | Foil Position | Foil | Release Top/Bot. |
|----------------|----------------|----------------|------------|---------------|------|-------------------------------|
| | Top | Bottom | | | | |
| 30 | 175°C 347°F | 165°C 329°F | 240 s | None | None | Rough Teflon/ Rough Teflon |

*These settings are a guideline only, every press is different. Test splicing is recommended.

Standard Splices

| | |
|--------------|--------------------|
| Endless | Finger Over Finger |
| Clipper Lace | UCM36 |
| Staple Lace | RS62 |



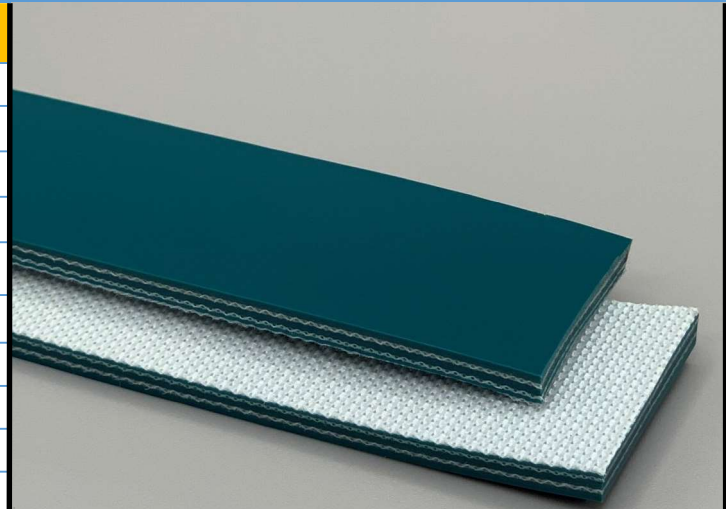
268307

3P120/10/0 G Green

PVC

Material Construction

| | | | |
|----------------|-----------|-------------------------|------------------|
| Surface | Conveying | Material | PVC |
| | | Profile | Glossy |
| | | Color | Green |
| | | Coefficient of friction | N/A |
| Tension Member | | Material | Polyester Fabric |
| | | Plies | 3 |
| Underside | | Material | Polyester Fabric |
| | | Profile | Impregnated |
| | | Color | White |
| | | Coefficient of friction | 0.25 |



Technical Specifications

| | | |
|---|------------------------|---------------------------|
| Overall Thickness | 4.00 mm | 0.157 in. |
| Weight | 4.62 kg/m ² | 0.95 lbs./ft ² |
| Maximum Width | 3,000 mm | 118.125 in. |
| Minimum Pulley/Nose Bar | | |
| Diameter for Recommended Endless Splice | 80 mm | 3.15 in. |
| Minimum Back Flex | 150 mm | 5.906 in. |
| Load for 1% Extension (Dynamic) | 12 N/mm | 68.52 lbs./in. |
| Standard Tension | | 0.5 % |
| Product Operational Temperature Range | -10/80 °C | 14/176 °F |
| Cover Durometer | 80 Shore A | |

Material Build



Features

| | | | |
|-----------------------|----|-----------------|-----|
| FDA | NO | Anti-Static | NO |
| USDA Meat and Poultry | NO | Flame Retardant | NO |
| USDA Dairy | NO | Cross Rigid | YES |
| Anti-Microbial | NO | | |

Standard Fabrications

| | | | |
|------------------------|-----|-------------------------|-----|
| Longitudinal Splice | YES | Cleats | YES |
| Guide Applied to Cover | YES | Guide Applied to Bottom | YES |
| Footed Sidewall | YES | Footless Sidewall | NO |
| Edge Capped | YES | Plastic Spiral Lace | YES |

Notes

3 Ply Monofilament - cover one side

*Minimum pulley diameters can vary when mechanical lace is installed. Contact our technical team for any fabrication or application questions.

Splicing Instructions

High Speed Press Settings

| Pressure (psi) | Temperature | | Press Time | Foil Position | Foil | Release Top/Bot. |
|----------------|----------------|----------------|------------|---------------|------|------------------|
| | Top | Bottom | | | | |
| N/A | N/A°C N/A°F | N/A°C N/A°F | N/A s | N/A | N/A | N/A/N/A |

Water Cooled Press Settings

| Pressure (psi) | Temperature | | Press Time | Foil Position | Foil | Release Top/Bot. |
|----------------|----------------|----------------|------------|---------------|-----------|--------------------|
| | Top | Bottom | | | | |
| 30 | 180°C 356°F | 175°C 347°F | 240 s | Top | Green PVC | Gloss/Rough Teflon |

*These settings are a guideline only, every press is different. Test splicing is recommended.

Standard Splices

| | |
|--------------|--------------------|
| Endless | Finger Over Finger |
| Clipper Lace | U2 |
| Staple Lace | RS125 |



268315

3P120/10/0 G White

PVC

Material Construction

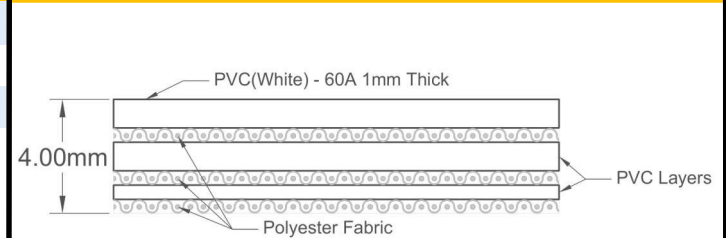
| | | | |
|----------------|-----------|-------------------------|------------------|
| Surface | Conveying | Material | PVC |
| | | Profile | Glossy |
| | | Color | White |
| | | Coefficient of friction | N/A |
| Tension Member | | Material | Polyester Fabric |
| | | Plies | 3 |
| Underside | | Material | Polyester Fabric |
| | | Profile | Impregnated |
| | | Color | White |
| | | Coefficient of friction | 0.25 |



Technical Specifications

| | | |
|---|-----------------------|---------------------------|
| Overall Thickness | 4.00 mm | 0.157 in. |
| Weight | 4.3 kg/m ² | 0.88 lbs./ft ² |
| Maximum Width | 3,000 mm | 118.125 in. |
| Minimum Pulley/Nose Bar | | |
| Diameter for Recommended Endless Splice | 60 mm | 2.362 in. |
| Minimum Back Flex | 100 mm | 3.937 in. |
| Load for 1% Extension (Dynamic) | 12 N/mm | 68.52 lbs./in. |
| Standard Tension | | 0.5 % |
| Product Operational Temperature Range | -10/80 °C | 14/176 °F |
| Cover Durometer | 60 Shore A | |

Material Build



Features

| | | | |
|-----------------------|-----|-----------------|-----|
| FDA | YES | Anti-Static | NO |
| USDA Meat and Poultry | NO | Flame Retardant | NO |
| USDA Dairy | NO | Cross Rigid | YES |
| Anti-Microbial | NO | | |

Standard Fabrications

| | | | |
|------------------------|-----|-------------------------|-----|
| Longitudinal Splice | YES | Cleats | YES |
| Guide Applied to Cover | YES | Guide Applied to Bottom | YES |
| Footed Sidewall | YES | Footless Sidewall | NO |
| Edge Capped | YES | Plastic Spiral Lace | YES |

Notes

3 Ply Monofilament - cover one side. Excellent oil and grease resistance

*Minimum pulley diameters can vary when mechanical lace is installed. Contact our technical team for any fabrication or application questions.

Splicing Instructions

High Speed Press Settings

| Pressure (psi) | Temperature | | Press Time | Foil Position | Foil | Release Top/Bot. |
|----------------|----------------|----------------|------------|---------------|------|------------------|
| | Top | Bottom | | | | |
| N/A | N/A°C N/A°F | N/A°C N/A°F | N/A s | N/A | N/A | N/A/N/A |

Water Cooled Press Settings

| Pressure (psi) | Temperature | | Press Time | Foil Position | Foil | Release Top/Bot. |
|----------------|----------------|----------------|------------|---------------|-----------|--------------------|
| | Top | Bottom | | | | |
| 30 | 175°C 347°F | 170°C 338°F | 240 s | Top | White PVC | Gloss/Rough Teflon |

*These settings are a guideline only, every press is different. Test splicing is recommended.

Standard Splices

| | |
|--------------|--------------------|
| Endless | Finger Over Finger |
| Clipper Lace | U2 |
| Staple Lace | RS125 |



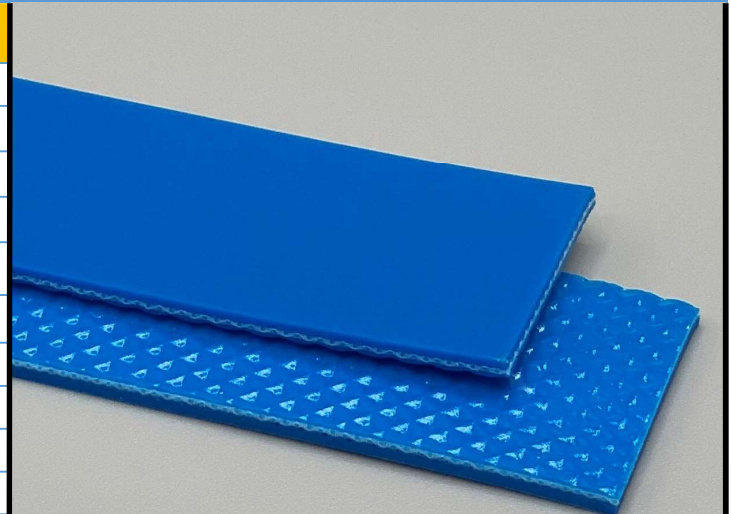
268400

1P40/05/05 F M Blue

PVC

Material Construction

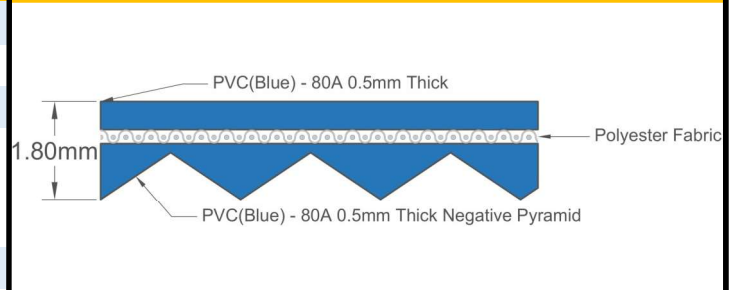
| | | | |
|----------------|-------------------------|-------------------------|------|
| Surface | Conveying | Material | PVC |
| | | Profile | Matt |
| | | Color | Blue |
| | | Coefficient of friction | N/A |
| Tension Member | Material | Polyester Fabric | |
| | Plies | 1 | |
| Underside | Material | PVC | |
| | Profile | Negative Pyramid | |
| | Color | Blue | |
| | Coefficient of friction | 0.40 | |



Technical Specifications

| | | |
|---|-----------------------|---------------------------|
| Overall Thickness | 1.80 mm | 0.071 in. |
| Weight | 1.8 kg/m ² | 0.37 lbs./ft ² |
| Maximum Width | 3,000 mm | 118.125 in. |
| Minimum Pulley/Nose Bar | | |
| Diameter for Recommended Endless Splice | 15 mm | 0.591 in. |
| Minimum Back Flex | 20 mm | 0.787 in. |
| Load for 1% Extension (Dynamic) | 4 N/mm | 22.84 lbs./in. |
| Standard Tension | | 0.5 % |
| Product Operational Temperature Range | -10/80 °C | 14/176 °F |
| Cover Durometer | 80 Shore A | |

Material Build



Features

| | | | |
|-----------------------|-----|-----------------|-----|
| FDA | YES | Anti-Static | NO |
| USDA Meat and Poultry | NO | Flame Retardant | NO |
| USDA Dairy | NO | Cross Rigid | YES |
| Anti-Microbial | NO | | |

Standard Fabrications

| | | | |
|------------------------|-----|-------------------------|-----|
| Longitudinal Splice | NO | Cleats | YES |
| Guide Applied to Cover | YES | Guide Applied to Bottom | YES |
| Footed Sidewall | NO | Footless Sidewall | NO |
| Edge Capped | YES | Plastic Spiral Lace | NO |

Notes

Laterally rigid 1 ply food grade PVC cover by cover. Excellent for corrugated loop pillow covers.

*Minimum pulley diameters can vary when mechanical lace is installed. Contact our technical team for any fabrication or application questions.

Splicing Instructions

High Speed Press Settings

| Pressure (psi) | Temperature | | Press Time | Foil Position | Foil | Release Top/Bot. |
|----------------|----------------|----------------|------------|---------------|----------|-----------------------|
| | Top | Bottom | | | | |
| 30 | 170°C 338°F | 170°C 338°F | 120 s | Top | Blue PVC | Matte/ Impression Pad |

Water Cooled Press Settings

| Pressure (psi) | Temperature | | Press Time | Foil Position | Foil | Release Top/Bot. |
|----------------|----------------|----------------|------------|---------------|----------|-----------------------|
| | Top | Bottom | | | | |
| 30 | 170°C 338°F | 170°C 338°F | 60 s | Top | Blue PVC | Matte/ Impression Pad |

*These settings are a guideline only, every press is different. Test splicing is recommended.

Standard Splices

| | |
|--------------|---------------|
| Endless | Single Finger |
| Clipper Lace | UCM36 SP |
| Staple Lace | RS62 |



268500

2P120/07/07F S White

PVC

Material Construction

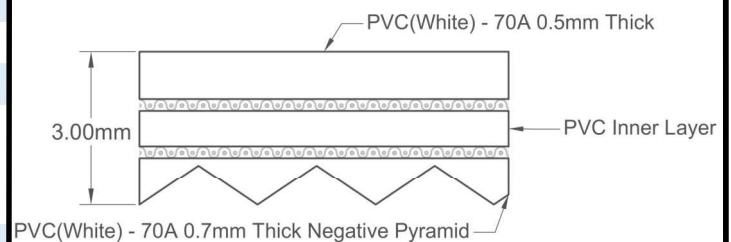
| | | | |
|----------------|-----------|-------------------------|------------------|
| Surface | Conveying | Material | PVC |
| | | Profile | Glossy |
| | | Color | White |
| | | Coefficient of friction | N/A |
| Tension Member | | Material | Polyester Fabric |
| | | Plies | 2 |
| Underside | | Material | PVC |
| | | Profile | Negative Pyramid |
| | | Color | White |
| | | Coefficient of friction | 0.35 |



Technical Specifications

| | | |
|---|------------------------|---------------------------|
| Overall Thickness | 3.00 mm | 0.118 in. |
| Weight | 3.32 kg/m ² | 0.68 lbs./ft ² |
| Maximum Width | 3,000 mm | 118.125 in. |
| Minimum Pulley/Nose Bar | | |
| Diameter for Recommended Endless Splice | 50 mm | 1.969 in. |
| Minimum Back Flex | 75 mm | 2.953 in. |
| Load for 1% Extension (Dynamic) | 8 N/mm | 45.68 lbs./in. |
| Standard Tension | | 0.5 % |
| Product Operational Temperature Range | -10/80 °C | 14/176 °F |
| Cover Durometer | 70 Shore A | |

Material Build



Features

| | | | |
|-----------------------|-----|-----------------|-----|
| FDA | YES | Anti-Static | NO |
| USDA Meat and Poultry | NO | Flame Retardant | NO |
| USDA Dairy | NO | Cross Rigid | YES |
| Anti-Microbial | NO | | |

Standard Fabrications

| | | | |
|------------------------|-----|-------------------------|-----|
| Longitudinal Splice | YES | Cleats | YES |
| Guide Applied to Cover | YES | Guide Applied to Bottom | YES |
| Footed Sidewall | YES | Footless Sidewall | NO |
| Edge Capped | YES | Plastic Spiral Lace | YES |

Notes

2-ply monofilament - Cover Both sides

*Minimum pulley diameters can vary when mechanical lace is installed. Contact our technical team for any fabrication or application questions.

Splicing Instructions

High Speed Press Settings

| Pressure (psi) | Temperature | | Press Time | Foil Position | Foil | Release Top/Bot. |
|----------------|----------------|----------------|------------|---------------|-----------|----------------------|
| | Top | Bottom | | | | |
| 30 | 175°C 347°F | 175°C 347°F | 240 s | Top | White PVC | Gloss/Impression Pad |

Water Cooled Press Settings

| Pressure (psi) | Temperature | | Press Time | Foil Position | Foil | Release Top/Bot. |
|----------------|----------------|----------------|------------|---------------|-----------|----------------------|
| | Top | Bottom | | | | |
| 30 | 175°C 347°F | 175°C 347°F | 120 s | Top | White PVC | Gloss/Impression Pad |

*These settings are a guideline only, every press is different. Test splicing is recommended.

Standard Splices

| | |
|--------------|---------------|
| Endless | Single Finger |
| Clipper Lace | UCM36 |
| Staple Lace | RS62 |



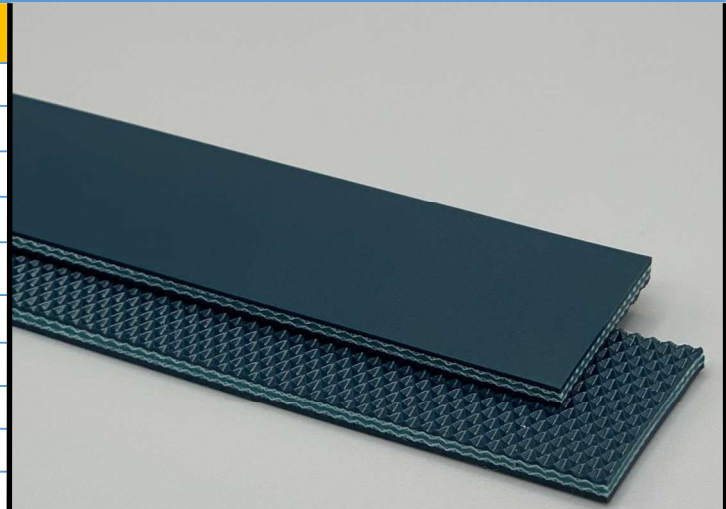
268520

2P80/05/05 LSQ AS M Green

PVC

Material Construction

| | | | |
|----------------|-----------|-------------------------|---------------------------|
| Surface | Conveying | Material | PVC |
| | | Profile | Matt |
| | | Color | Dark Green |
| | | Coefficient of friction | N/A |
| Tension Member | | Material | Polyester Fabric |
| | | Plies | 2 |
| Underside | | Material | PVC |
| | | Profile | LSQ Mini Negative Pyramid |
| | | Color | Dark Green |
| | | Coefficient of friction | 0.40 |



Technical Specifications

| | | |
|---|-----------------------|--------------------------|
| Overall Thickness | 2.70 mm | 0.106 in. |
| Weight | 3.4 kg/m ² | 0.7 lbs./ft ² |
| Maximum Width | 3,000 mm | 118.125 in. |
| Minimum Pulley/Nose Bar | | |
| Diameter for Recommended Endless Splice | 50 mm | 1.969 in. |
| Minimum Back Flex | 75 mm | 2.953 in. |
| Load for 1% Extension (Dynamic) | 8 N/mm | 45.68 lbs./in. |
| Standard Tension | | 0.5 % |
| Product Operational Temperature Range | -10/80 °C | 14/176 °F |
| Cover Durometer | 85 Shore A | |

Material Build



Features

| | | | |
|-----------------------|----|-----------------|-----|
| FDA | NO | Anti-Static | YES |
| USDA Meat and Poultry | NO | Flame Retardant | NO |
| USDA Dairy | NO | Cross Rigid | YES |
| Anti-Microbial | NO | | |

Standard Fabrications

| | | | |
|------------------------|-----|-------------------------|-----|
| Longitudinal Splice | YES | Cleats | YES |
| Guide Applied to Cover | YES | Guide Applied to Bottom | YES |
| Footed Sidewall | YES | Footless Sidewall | NO |
| Edge Capped | YES | Plastic Spiral Lace | YES |

Notes

2-ply monofilament - Cover Both sides. Mini Inverted Diamond bottom embossment for friction reduction.

*Minimum pulley diameters can vary when mechanical lace is installed. Contact our technical team for any fabrication or application questions.

Splicing Instructions

High Speed Press Settings

| Pressure (psi) | Temperature | | Press Time | Foil Position | Foil | Release Top/Bot. |
|----------------|----------------|----------------|------------|---------------|-----------|------------------------|
| | Top | Bottom | | | | |
| 30 | 175°C 347°F | 175°C 347°F | 360 s | Top | Green PVC | Matte/ Rough Teflon |

Water Cooled Press Settings

| Pressure (psi) | Temperature | | Press Time | Foil Position | Foil | Release Top/Bot. |
|----------------|----------------|----------------|------------|---------------|-----------|------------------------|
| | Top | Bottom | | | | |
| 30 | 175°C 347°F | 175°C 347°F | 240 s | Top | Green PVC | Matte/ Rough Teflon |

*These settings are a guideline only, every press is different. Test splicing is recommended.

Standard Splices

| | |
|--------------|---------------|
| Endless | Single Finger |
| Clipper Lace | UCM36 |
| Staple Lace | RS62 |



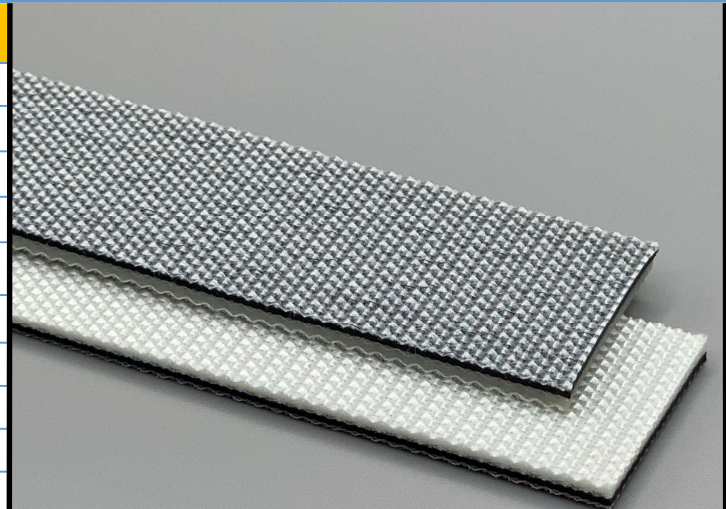
268802

3P120/01/0 Black

PVC

Material Construction

| | | |
|-------------------|-------------------------|------------------|
| Conveying Surface | Material | Polyester Fabric |
| | Profile | Impregnated |
| | Color | Gray |
| | Coefficient of friction | 0.2 |
| Tension Member | Material | Polyester Fabric |
| | Plies | 3 |
| Underside | Material | Polyester Fabric |
| | Profile | Fabric |
| | Color | White |
| | Coefficient of friction | 0.20 |



Technical Specifications

| | | |
|---|---------------------|---------------------------|
| Overall Thickness | 2.80 mm | 0.11 in. |
| Weight | 3 kg/m ² | 0.61 lbs./ft ² |
| Maximum Width | 3,000 mm | 118.125 in. |
| Minimum Pulley/Nose Bar | | |
| Diameter for Recommended Endless Splice | 80 mm | 3.15 in. |
| Minimum Back Flex | 150 mm | 5.906 in. |
| Load for 1% Extension (Dynamic) | 12 N/mm | 68.52 lbs./in. |
| Standard Tension | | 0.5 % |
| Product Operational Temperature Range | -10/80 °C | 14/176 °F |
| Cover Durometer | N/A Shore A | |

Material Build



Features

| | | | |
|-----------------------|----|-----------------|-----|
| FDA | NO | Anti-Static | YES |
| USDA Meat and Poultry | NO | Flame Retardant | NO |
| USDA Dairy | NO | Cross Rigid | YES |
| Anti-Microbial | NO | | |

Standard Fabrications

| | | | |
|------------------------|-----|-------------------------|-----|
| Longitudinal Splice | YES | Cleats | NO |
| Guide Applied to Cover | YES | Guide Applied to Bottom | YES |
| Footed Sidewall | NO | Footless Sidewall | NO |
| Edge Capped | NO | Plastic Spiral Lace | YES |

Notes

3 ply monofilament with low friction top and bottom surfaces. Great for accumulation, diverting applications etc.

*Minimum pulley diameters can vary when mechanical lace is installed. Contact our technical team for any fabrication or application questions.

Splicing Instructions

High Speed Press Settings

| Pressure (psi) | Temperature | | Press Time | Foil Position | Foil | Release Top/Bot. |
|----------------|----------------|----------------|------------|---------------|------|------------------|
| | Top | Bottom | | | | |
| N/A | N/A°C N/A°F | N/A°C N/A°F | N/A s | N/A | N/A | N/A/N/A |

Water Cooled Press Settings

| Pressure (psi) | Temperature | | Press Time | Foil Position | Foil | Release Top/Bot. |
|----------------|----------------|----------------|------------|---------------|-----------|-------------------------------|
| | Top | Bottom | | | | |
| 30 | 170°C 338°F | 165°C 329°F | 240 s | Bottom | Clear PVC | Rough Teflon/ Rough Teflon |

*These settings are a guideline only, every press is different. Test splicing is recommended.

Standard Splices

| | |
|--------------|---------------|
| Endless | Single Finger |
| Clipper Lace | UCM36 |
| Staple Lace | RS62 |



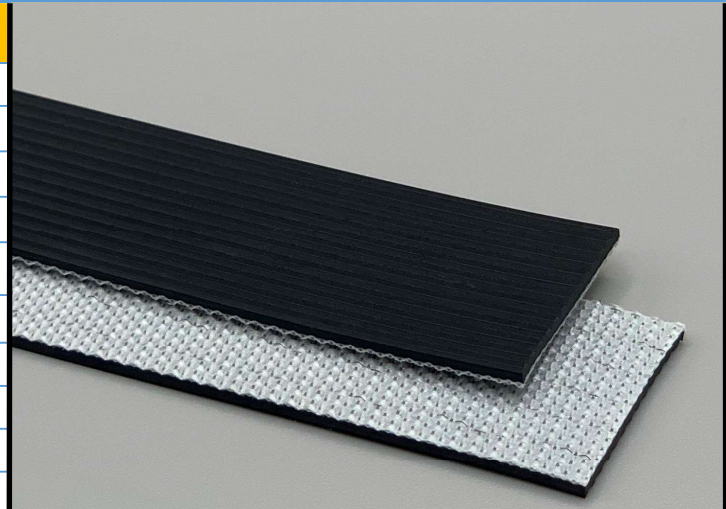
269100

1P40/GP/0 AS Black

PVC

Material Construction

| | | |
|-------------------|-------------------------|---------------------|
| Conveying Surface | Material | PVC |
| | Profile | Longitudinal ribbed |
| | Color | Black |
| | Coefficient of friction | N/A |
| Tension Member | Material | Polyester Fabric |
| | Plies | 1 |
| Underside | Material | Polyester Fabric |
| | Profile | Impregnated |
| | Color | Gray |
| | Coefficient of friction | 0.25 |



Technical Specifications

| | | |
|---|-----------------------|---------------------------|
| Overall Thickness | 1.60 mm | 0.063 in. |
| Weight | 1.5 kg/m ² | 0.31 lbs./ft ² |
| Maximum Width | 3,000 mm | 118.125 in. |
| Minimum Pulley/Nose Bar | | |
| Diameter for Recommended Endless Splice | 40 mm | 1.575 in. |
| Minimum Back Flex | 50 mm | 1.969 in. |
| Load for 1% Extension (Dynamic) | 4 N/mm | 22.84 lbs./in. |
| Standard Tension | | 0.5 % |
| Product Operational Temperature Range | -10/80 °C | 14/176 °F |
| Cover Durometer | 60 Shore A | |

Features

| | | | |
|-----------------------|----|-----------------|-----|
| FDA | NO | Anti-Static | YES |
| USDA Meat and Poultry | NO | Flame Retardant | NO |
| USDA Dairy | NO | Cross Rigid | YES |
| Anti-Microbial | NO | | |

Standard Fabrications

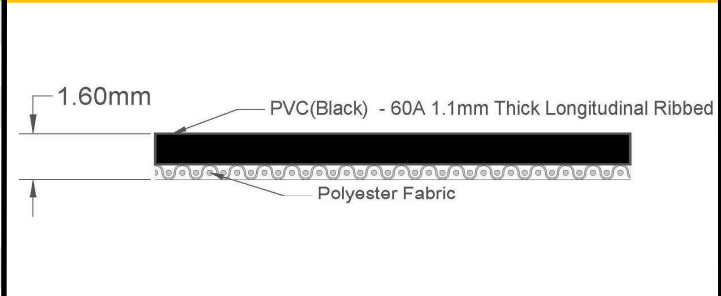
| | | | |
|------------------------|----|-------------------------|-----|
| Longitudinal Splice | NO | Cleats | NO |
| Guide Applied to Cover | NO | Guide Applied to Bottom | YES |
| Footed Sidewall | NO | Footless Sidewall | NO |
| Edge Capped | NO | Plastic Spiral Lace | YES |

Notes

High grip longitudinal ribbed top cover provides secure and positive transfer while 1 ply construction provides great flexibility with excellent efficiency for significant power savings over two ply counterparts.

*Minimum pulley diameters can vary when mechanical lace is installed. Contact our technical team for any fabrication or application questions.

Material Build



Splicing Instructions

High Speed Press Settings

| Pressure (psi) | Temperature | | Press Time | Foil Position | Foil | Release Top/Bot. |
|----------------|----------------|----------------|------------|---------------|-----------|-----------------------------|
| | Top | Bottom | | | | |
| 30 | 175°C 175°F | 175°C 175°F | 90 s | Top | Black PVC | Impression Pad/Rough Teflon |

Water Cooled Press Settings

| Pressure (psi) | Temperature | | Press Time | Foil Position | Foil | Release Top/Bot. |
|----------------|----------------|----------------|------------|---------------|-----------|-----------------------------|
| | Top | Bottom | | | | |
| 30 | 175°C 175°F | 175°C 175°F | 60 s | Top | Black PVC | Impression Pad/Rough Teflon |

*These settings are a guideline only, every press is different. Test splicing is recommended.

Standard Splices

| | |
|--------------|---------------|
| Endless | Single Finger |
| Clipper Lace | UCM36 SP |
| Staple Lace | RS62 |



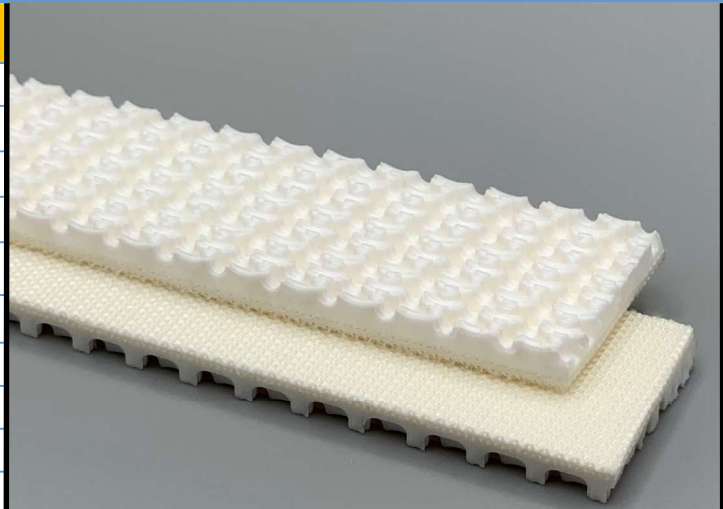
269140

2P100/RT/01 White

PVC

Material Construction

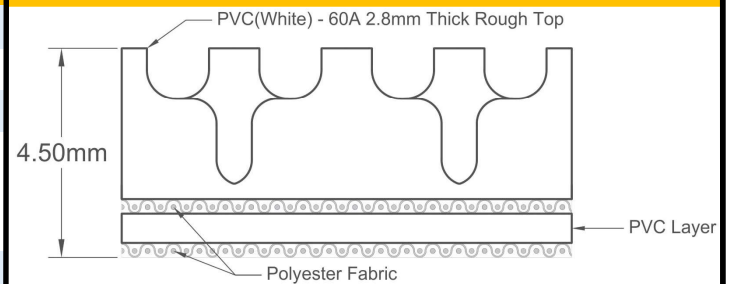
| | | |
|-------------------|-------------------------|--------------------|
| Conveying Surface | Material | PVC |
| | Profile | Sinewave Rough Top |
| | Color | White |
| | Coefficient of friction | N/A |
| Tension Member | Material | Polyester Fabric |
| | Plies | 2 |
| Underside | Material | Polyester Fabric |
| | Profile | Impregnated |
| | Color | White |
| | Coefficient of friction | 0.25 |



Technical Specifications

| | | |
|---|------------------------|---------------------------|
| Overall Thickness | 4.50 mm | 0.177 in. |
| Weight | 4.05 kg/m ² | 0.83 lbs./ft ² |
| Maximum Width | 3,000 mm | 118.125 in. |
| Minimum Pulley/Nose Bar | | |
| Diameter for Recommended Endless Splice | 70 mm | 2.756 in. |
| Minimum Back Flex | 120 mm | 4.724 in. |
| Load for 1% Extension (Dynamic) | 8 N/mm | 45.68 lbs./in. |
| Standard Tension | | 0.5 % |
| Product Operational Temperature Range | -10/80 °C | 14/176 °F |
| Cover Durometer | 60 Shore A | |

Material Build



Features

| | | | |
|-----------------------|-----|-----------------|-----|
| FDA | YES | Anti-Static | NO |
| USDA Meat and Poultry | NO | Flame Retardant | NO |
| USDA Dairy | NO | Cross Rigid | YES |
| Anti-Microbial | NO | | |

Standard Fabrications

| | | | |
|------------------------|-----|-------------------------|-----|
| Longitudinal Splice | YES | Cleats | YES |
| Guide Applied to Cover | NO | Guide Applied to Bottom | YES |
| Footed Sidewall | NO | Footless Sidewall | NO |
| Edge Capped | YES | Plastic Spiral Lace | YES |

Notes

2 Ply polyester with Sine wave rough top profiled cover

*Minimum pulley diameters can vary when mechanical lace is installed. Contact our technical team for any fabrication or application questions.

Splicing Instructions

High Speed Press Settings

| Pressure (psi) | Temperature | | Press Time | Foil Position | Foil | Release Top/Bot. |
|----------------|----------------|----------------|------------|---------------|------|------------------|
| | Top | Bottom | | | | |
| N/A | N/A°C N/A°F | N/A°C N/A°F | N/A s | N/A | N/A | N/A/N/A |

Water Cooled Press Settings

| Pressure (psi) | Temperature | | Press Time | Foil Position | Foil | Release Top/Bot. |
|----------------|----------------|----------------|------------|---------------|------|-----------------------------|
| | Top | Bottom | | | | |
| 30 | 175°C 347°F | 170°C 338°F | 240 s | N/A | None | Impression Pad/Rough Teflon |

*These settings are a guideline only, every press is different. Test splicing is recommended.

Standard Splices

| | |
|--------------|-------------------|
| Endless | Single Finger |
| Clipper Lace | Recessed UCM36 SP |
| Staple Lace | RS62 Recessed |



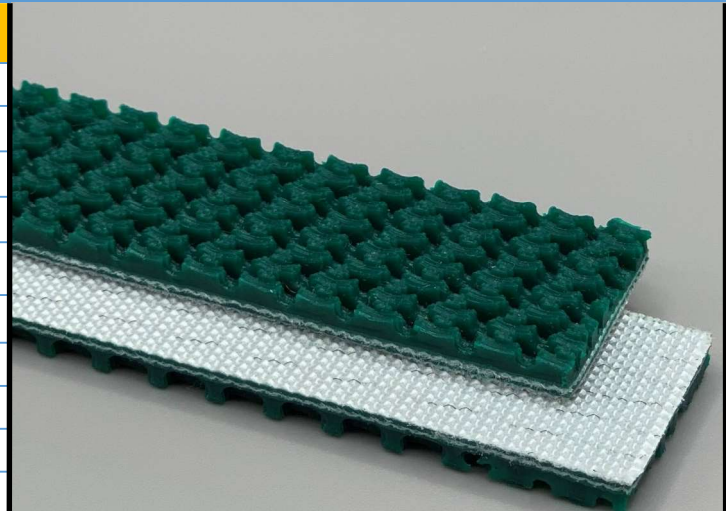
269145

2P80/RT/0 AS Green

PVC

Material Construction

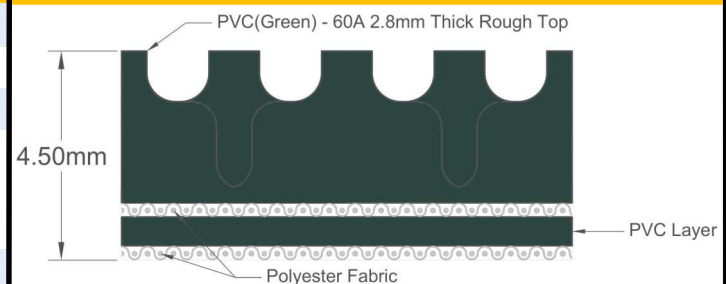
| | | |
|-------------------|-------------------------|--------------------|
| Conveying Surface | Material | PVC |
| | Profile | Sinewave Rough Top |
| | Color | Green |
| | Coefficient of friction | N/A |
| Tension Member | Material | Polyester Fabric |
| | Plies | 2 |
| Underside | Material | Polyester Fabric |
| | Profile | Fabric |
| | Color | White |
| | Coefficient of friction | 0.25 |



Technical Specifications

| | | |
|---|------------------------|---------------------------|
| Overall Thickness | 4.50 mm | 0.177 in. |
| Weight | 4.06 kg/m ² | 0.83 lbs./ft ² |
| Maximum Width | 3,000 mm | 118.125 in. |
| Minimum Pulley/Nose Bar | | |
| Diameter for Recommended Endless Splice | 60 mm | 2.362 in. |
| Minimum Back Flex | 60 mm | 2.362 in. |
| Load for 1% Extension (Dynamic) | 8 N/mm | 45.68 lbs./in. |
| Standard Tension | | 0.5 % |
| Product Operational Temperature Range | -10/80 °C | 14/176 °F |
| Cover Durometer | 60 Shore A | |

Material Build



Features

| | | | |
|-----------------------|----|-----------------|-----|
| FDA | NO | Anti-Static | YES |
| USDA Meat and Poultry | NO | Flame Retardant | NO |
| USDA Dairy | NO | Cross Rigid | YES |
| Anti-Microbial | NO | | |

Standard Fabrications

| | | | |
|------------------------|-----|-------------------------|-----|
| Longitudinal Splice | YES | Cleats | YES |
| Guide Applied to Cover | NO | Guide Applied to Bottom | YES |
| Footed Sidewall | NO | Footless Sidewall | NO |
| Edge Capped | YES | Plastic Spiral Lace | YES |

Notes

2 ply monofilament with sine wave profile top

*Minimum pulley diameters can vary when mechanical lace is installed. Contact our technical team for any fabrication or application questions.

Splicing Instructions

High Speed Press Settings

| Pressure (psi) | Temperature | | Press Time | Foil Position | Foil | Release Top/Bot. |
|----------------|----------------|----------------|------------|---------------|-----------|-----------------------------|
| | Top | Bottom | | | | |
| 30 | 180°C 356°F | 175°C 347°F | 240 s | Top | Green PVC | Impression Pad/Rough Teflon |

Water Cooled Press Settings

| Pressure (psi) | Temperature | | Press Time | Foil Position | Foil | Release Top/Bot. |
|----------------|----------------|----------------|------------|---------------|-----------|-----------------------------|
| | Top | Bottom | | | | |
| 30 | 180°C 356°F | 175°C 347°F | 180 s | Top | Green PVC | Impression Pad/Rough Teflon |

*These settings are a guideline only, every press is different. Test splicing is recommended.

Standard Splices

| | |
|--------------|-------------------|
| Endless | Single Finger |
| Clipper Lace | Recessed UCM36 SP |
| Staple Lace | RS62 Recessed |



269161

2P120/NP/0 White

PVC

Material Construction

| | | |
|-------------------|-------------------------|-------------------------|
| Conveying Surface | Material | PVC |
| | Profile | Nipple Top (Knobby Top) |
| | Color | White |
| | Coefficient of friction | N/A |
| Tension Member | Material | Polyester Fabric |
| | Plies | 2 |
| Underside | Material | Polyester Fabric |
| | Profile | Bare |
| | Color | White |
| | Coefficient of friction | 0.24 |



Technical Specifications

| | | |
|---|-----------------------|---------------------------|
| Overall Thickness | 2.70 mm | 0.106 in. |
| Weight | 2.8 kg/m ² | 0.57 lbs./ft ² |
| Maximum Width | 3,000 mm | 118.125 in. |
| Minimum Pulley/Nose Bar | | |
| Diameter for Recommended Endless Splice | 40 mm | 1.575 in. |
| Minimum Back Flex | 60 mm | 2.362 in. |
| Load for 1% Extension (Dynamic) | 12 N/mm | 68.52 lbs./in. |
| Standard Tension | | 0.5 % |
| Product Operational Temperature Range | -10/70 °C | 14/158 °F |
| Cover Durometer | 55 Shore A | |

Features

| | | | |
|-----------------------|-----|-----------------|-----|
| FDA | YES | Anti-Static | NO |
| USDA Meat and Poultry | NO | Flame Retardant | NO |
| USDA Dairy | NO | Cross Rigid | YES |
| Anti-Microbial | NO | | |

Standard Fabrications

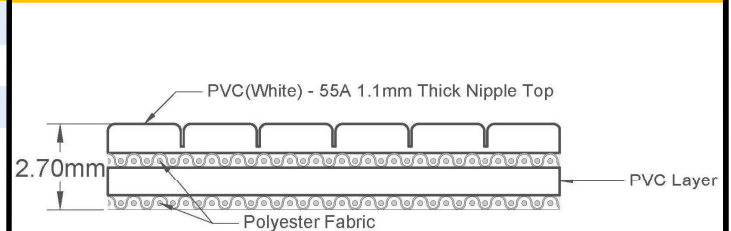
| | | | |
|------------------------|-----|-------------------------|-----|
| Longitudinal Splice | YES | Cleats | YES |
| Guide Applied to Cover | NO | Guide Applied to Bottom | YES |
| Footed Sidewall | NO | Footless Sidewall | NO |
| Edge Capped | YES | Plastic Spiral Lace | YES |

Notes

2 Ply Monofilament - cover one side with Nipple (Knobby) Top profile

*Minimum pulley diameters can vary when mechanical lace is installed. Contact our technical team for any fabrication or application questions.

Material Build



Splicing Instructions

High Speed Press Settings

| Pressure (psi) | Temperature | | Press Time | Foil Position | Foil | Release Top/Bot. |
|----------------|----------------|----------------|------------|---------------|-----------|-----------------------------|
| | Top | Bottom | | | | |
| 30 | 175°C 347°F | 175°C 347°F | 240 s | Top | White PVC | Impression Pad/Rough Teflon |

Water Cooled Press Settings

| Pressure (psi) | Temperature | | Press Time | Foil Position | Foil | Release Top/Bot. |
|----------------|----------------|----------------|------------|---------------|-----------|-----------------------------|
| | Top | Bottom | | | | |
| 30 | 175°C 347°F | 175°C 347°F | 150 s | Top | White PVC | Impression Pad/Rough Teflon |

*These settings are a guideline only, every press is different. Test splicing is recommended.

Standard Splices

| | |
|--------------|---------------|
| Endless | Single Finger |
| Clipper Lace | UCM36 |
| Staple Lace | RS62 |



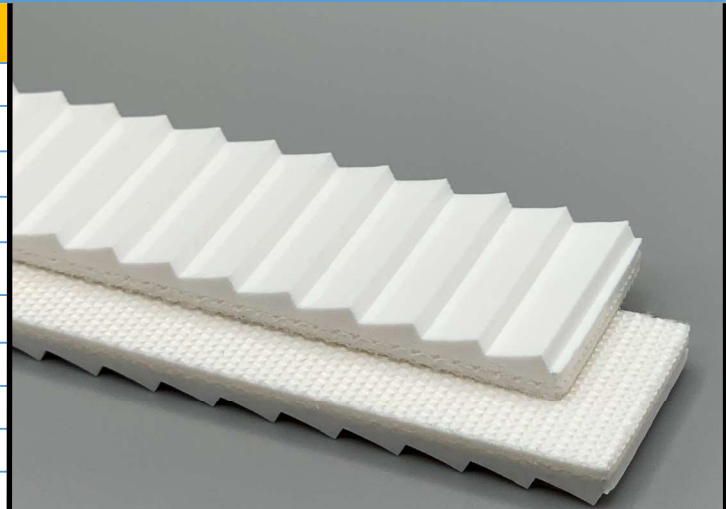
269180

2P100/ST/0 White

PVC

Material Construction

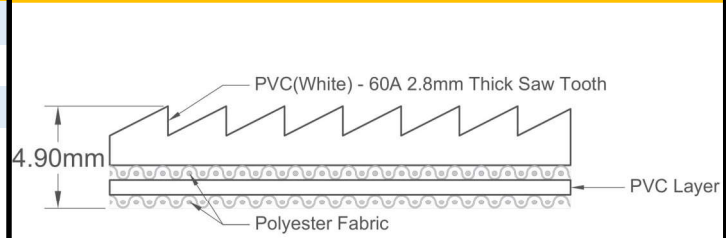
| | | | |
|-----------|-----------|-------------------------|------------------|
| Surface | Conveying | Material | PVC |
| | | Profile | Saw Tooth |
| | | Color | White |
| | | Coefficient of friction | N/A |
| Member | Tension | Material | Polyester Fabric |
| | | Plies | 2 |
| Underside | | Material | Polyester Fabric |
| | | Profile | Bare |
| | | Color | White |
| | | Coefficient of friction | 0.25 |



Technical Specifications

| | | |
|---|-----------------------|---------------------------|
| Overall Thickness | 4.90 mm | 0.193 in. |
| Weight | 5.3 kg/m ² | 1.09 lbs./ft ² |
| Maximum Width | 1,200 mm | 47.25 in. |
| Minimum Pulley/Nose Bar | | |
| Diameter for Recommended Endless Splice | 60 mm | 2.362 in. |
| Minimum Back Flex | 90 mm | 3.543 in. |
| Load for 1% Extension (Dynamic) | 8 N/mm | 45.68 lbs./in. |
| Standard Tension | | 0.5 % |
| Product Operational Temperature Range | -10/80 °C | 14/176 °F |
| Cover Durometer | 60 Shore A | |

Material Build



Features

| | | | |
|-----------------------|-----|-----------------|-----|
| FDA | YES | Anti-Static | NO |
| USDA Meat and Poultry | NO | Flame Retardant | NO |
| USDA Dairy | NO | Cross Rigid | YES |
| Anti-Microbial | NO | | |

Standard Fabrications

| | | | |
|------------------------|----|-------------------------|-----|
| Longitudinal Splice | NO | Cleats | NO |
| Guide Applied to Cover | NO | Guide Applied to Bottom | YES |
| Footed Sidewall | NO | Footless Sidewall | NO |
| Edge Capped | NO | Plastic Spiral Lace | NO |

Notes

2 Ply Monofilament - cover one side with saw tooth profile. Excellent for incline and decline applications

*Minimum pulley diameters can vary when mechanical lace is installed. Contact our technical team for any fabrication or application questions.

Splicing Instructions

High Speed Press Settings

| Pressure (psi) | Temperature | | Press Time | Foil Position | Foil | Release Top/Bot. |
|----------------|----------------|----------------|------------|---------------|------|------------------|
| | Top | Bottom | | | | |
| N/A | N/A°C N/A°F | N/A°C N/A°F | N/A s | N/A | N/A | N/A/N/A |

Water Cooled Press Settings

| Pressure (psi) | Temperature | | Press Time | Foil Position | Foil | Release Top/Bot. |
|----------------|----------------|----------------|------------|---------------|------|-----------------------------|
| | Top | Bottom | | | | |
| 30 | 175°C 347°F | 170°C 338°F | 240 s | N/A | None | Impression Pad/Rough Teflon |

*These settings are a guideline only, every press is different. Test splicing is recommended.

Standard Splices

| | |
|--------------|-------------------|
| Endless | Single Finger |
| Clipper Lace | Recessed UCM36 SP |
| Staple Lace | RS62 Recessed |



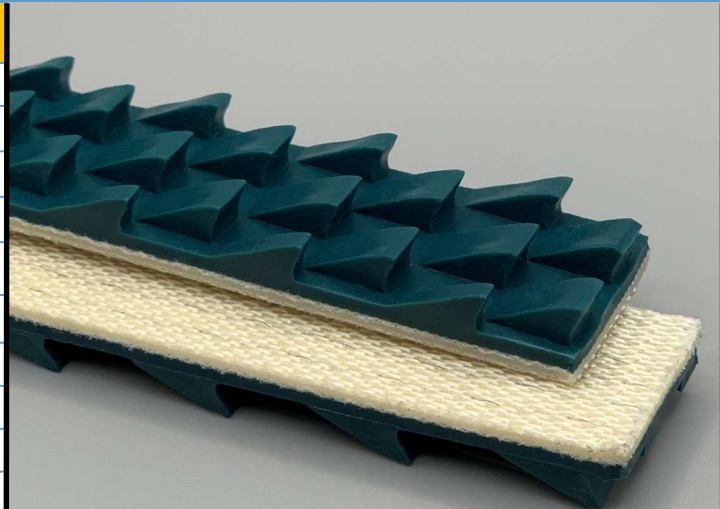
269190

2PL80/P77/0 AS Green

PVC

Material Construction

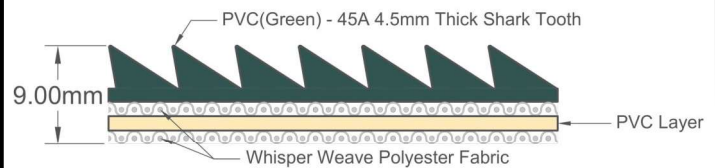
| | | | |
|-----------|-----------|-------------------------|-------------------------|
| Surface | Conveying | Material | PVC |
| | | Profile | Shark Tooth |
| | | Color | Green |
| | | Coefficient of friction | N/A |
| Member | Tension | Material | Polyester Fabric |
| | | Plies | 2 |
| Underside | | Material | Whisper weave polyester |
| | | Profile | Low Noise |
| | | Color | White |
| | | Coefficient of friction | 0.20 |



Technical Specifications

| | | |
|---|-----------------------|---------------------------|
| Overall Thickness | 9.00 mm | 0.354 in. |
| Weight | 5.8 kg/m ² | 1.19 lbs./ft ² |
| Maximum Width | 1,500 mm | 59.055 in. |
| Minimum Pulley/Nose Bar | | |
| Diameter for Recommended Endless Splice | 60 mm | 2.362 in. |
| Minimum Back Flex | 120 mm | 4.724 in. |
| Load for 1% Extension (Dynamic) | 8 N/mm | 45.68 lbs./in. |
| Standard Tension | | 0.5 % |
| Product Operational Temperature Range | -10/80 °C | 14/176 °F |
| Cover Durometer | 45 Shore A | |

Material Build



Features

| | | | |
|-----------------------|----|-----------------|-----|
| FDA | NO | Anti-Static | YES |
| USDA Meat and Poultry | NO | Flame Retardant | NO |
| USDA Dairy | NO | Cross Rigid | YES |
| Anti-Microbial | NO | | |

Standard Fabrications

| | | | |
|------------------------|----|-------------------------|-----|
| Longitudinal Splice | NO | Cleats | NO |
| Guide Applied to Cover | NO | Guide Applied to Bottom | YES |
| Footed Sidewall | NO | Footless Sidewall | NO |
| Edge Capped | NO | Plastic Spiral Lace | NO |

Notes

Aggressive "Shark Tooth" top profile for positive product control on inclines, declines and horizontal conveying. Energy-Saving Low-Noise construction.

*Minimum pulley diameters can vary when mechanical lace is installed. Contact our technical team for any fabrication or application questions.

Splicing Instructions

High Speed Press Settings

| Pressure (psi) | Temperature | | Press Time | Foil Position | Foil | Release Top/Bot. |
|----------------|----------------|----------------|------------|---------------|------|------------------|
| | Top | Bottom | | | | |
| N/A | N/A°C N/A°F | N/A°C N/A°F | N/A s | N/A | N/A | N/A/N/A |

Water Cooled Press Settings

| Pressure (psi) | Temperature | | Press Time | Foil Position | Foil | Release Top/Bot. |
|----------------|----------------|----------------|------------|---------------|------|-----------------------------|
| | Top | Bottom | | | | |
| 30 | 180°C 356°F | 175°C 347°F | 360 s | N/A | None | Impression Pad/Rough Teflon |

*These settings are a guideline only, every press is different. Test splicing is recommended.

Standard Splices

| | |
|--------------|----------------|
| Endless | Single Finger |
| Clipper Lace | Recessed UX-1 |
| Staple Lace | RS125 Recessed |



290105

Felt Top One Ply

PVC

Material Construction

| | | |
|-------------------|-------------------------|------------------------------|
| Conveying Surface | Material | Polyester Fleece |
| | Profile | Non Woven (Fleece) Structure |
| | Color | White |
| | Coefficient of friction | N/A |
| Tension Member | Material | Polyester Fabric |
| | Plies | 1 |
| Underside | Material | Polyester Fabric |
| | Profile | Bare |
| | Color | White |
| | Coefficient of friction | 0.25 |



Technical Specifications

| | | |
|---|-----------------------|---------------------------|
| Overall Thickness | 3.10 mm | 0.122 in. |
| Weight | 2.4 kg/m ² | 0.49 lbs./ft ² |
| Maximum Width | 2,000 mm | 78.75 in. |
| Minimum Pulley/Nose Bar | | |
| Diameter for Recommended Endless Splice | 30 mm | 1.181 in. |
| Minimum Back Flex | 45 mm | 1.772 in. |
| Load for 1% Extension (Dynamic) | 7 N/mm | 39.97 lbs./in. |
| Standard Tension | | 0.5 % |
| Product Operational Temperature Range | -10/90 °C | 14/194 °F |
| Cover Durometer | N/A Shore A | |

Material Build



Features

| | | | |
|-----------------------|-----|-----------------|-----|
| FDA | YES | Anti-Static | NO |
| USDA Meat and Poultry | NO | Flame Retardant | NO |
| USDA Dairy | NO | Cross Rigid | YES |
| Anti-Microbial | NO | | |

Standard Fabrications

| | | | |
|------------------------|----|-------------------------|-----|
| Longitudinal Splice | NO | Cleats | NO |
| Guide Applied to Cover | NO | Guide Applied to Bottom | YES |
| Footed Sidewall | NO | Footless Sidewall | NO |
| Edge Capped | NO | Plastic Spiral Lace | YES |

Notes

1 Ply Monofilament - With Felt Cover

*Minimum pulley diameters can vary when mechanical lace is installed. Contact our technical team for any fabrication or application questions.

Splicing Instructions

High Speed Press Settings

| Pressure (psi) | Temperature | | Press Time | Foil Position | Foil | Release Top/Bot. |
|----------------|----------------|----------------|------------|---------------|----------|-------------------------------|
| | Top | Bottom | | | | |
| 25 | 170°C 338°F | 165°C 329°F | 120 s | Bottom | White PU | Rough Teflon/ Rough Teflon |

Water Cooled Press Settings

| Pressure (psi) | Temperature | | Press Time | Foil Position | Foil | Release Top/Bot. |
|----------------|----------------|----------------|------------|---------------|----------|-------------------------------|
| | Top | Bottom | | | | |
| 25 | 170°C 338°F | 165°C 329°F | 60 s | Bottom | White PU | Rough Teflon/ Rough Teflon |

*These settings are a guideline only, every press is different. Test splicing is recommended.

Standard Splices

| | |
|--------------|---------------|
| Endless | Single Finger |
| Clipper Lace | UCM36 |
| Staple Lace | RS62 |

