


Dalton Gear Company
Address: 212 Colfax Ave. N

Minneapolis, MN 55405

Toll-Free: 800-328-7485

Phone: 612-374-2150

Fax: 612-374-2467

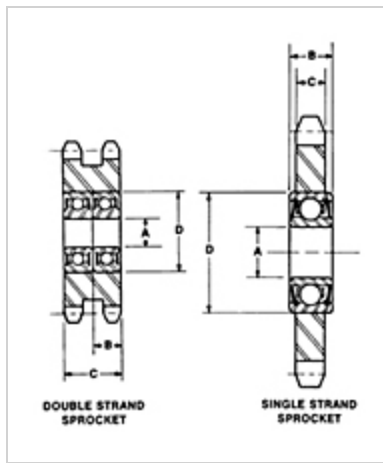
E-mail: timw@daltongear.com

Ball Bearing Idler Sprockets

21 Items Available

Precision Sealed Ball Bearings offer superior performance supplied with hardened or unhardened teeth in convenient bore sizes.

Please Call For Discounts On List Prices.



View items

Item #	Pitch	No. of Teeth	A - Stock Bores	B - Bearing Width	C - Sprocket Width	D - Bearing OD
101-3/8	1/4 Inch	20	3/8 Inch	5/16 Inch	.110 Inch	29/32 Inch
102-3/8	3/8 Inch	19	3/8 Inch	3/8 Inch	.168 Inch	1-3/8 Inch
102-1/2	3/8 Inch	19	1/2 Inch	3/8 Inch	.168 Inch	1-3/8 Inch
103-1/2	1/2 Inch	18	1/2 Inch	7/16 Inch	.227 Inch	1-3/8 Inch

103- 5/8	1/2 Inch	18	5/8 Inch	7/16 Inch	.227 Inch	1-3/8 Inch
104- 1/2	1/2 Inch	18	1/2 Inch	7/16 Inch	.284 Inch	1-3/8 Inch
104- 5/8	1/2 Inch	18	5/8 Inch	7/16 Inch	.284 Inch	1-3/8 Inch
105- 1/2	5/8 Inch	17	1/2 Inch	7/16 Inch	.343 Inch	1-3/8 Inch
105- 5/8	5/8 Inch	17	5/8 Inch	7/16 Inch	.343 Inch	1-3/8 Inch
106- 1/2	3/4 Inch	15	1/2 Inch	7/16 Inch	.459 Inch	1-3/8 Inch

Showing 10 of 21